

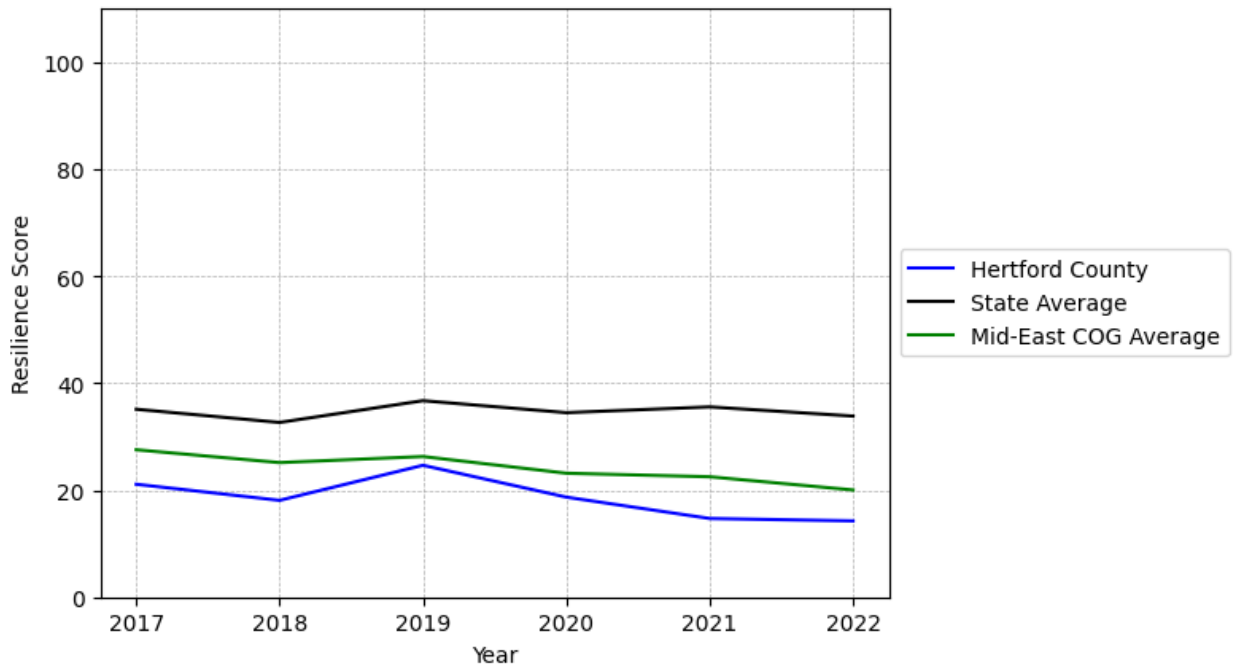
# Hertford County Summary

---

**Resilience Score: 14.25**

In 2022, Hertford County achieved a Resilience Score of 14.25, which is weak as compared to the North Carolina State average.

**Hertford County's Resilience Score Over Time  
As Compared to the Region and State Averages**



*Note: Resilience Scores are normalized from 1 to 100 with the most resilient county scoring 100. The Resilience Score is determined based on a county's performance relative to NC's other 99 counties.*

Hertford County's Resilience Score is comprised of 9 distinct dimensions of resilience. Below are Hertford County's scores for 2022 on those 9 dimensions, and their rank relative to other North Carolina counties.

### **Business Community Health: 13.22**

This component examines the strength and diversity of the local business community, including factors such as the number of businesses, employment levels, and industry diversity. Hertford County's performance on this dimension is average when compared to other North Carolina counties, ranking 39th in the state.

Notable variables for Hertford County within this dimension include:

<b>VARIABLE STRENGTH</b>	<b>FACTOR</b>	<b>HERTFORD COUNTY VALUE</b>	<b>NC COUNTY AVERAGE VALUE</b>
<b>Top 10 in NC, Strongest</b>	Ratio of Available Child Care Slots to Number of Children under Five	0.91	0.59
<b>2nd Strongest</b>	Private Sector Diversity	0.41	0.28
<b>Bottom 10 in NC, Weakest</b>	Percentage of Companies in Science, Engineering, & Technology Industries	2.02%	6.13%

---

### **County Government Fiscal Strength: 29.87**

This component looks at the financial health of local governments, including their ability to generate revenue, manage debt, and maintain adequate reserves to weather economic downturns. Hertford County's performance on this dimension is fairly weak when compared to other North Carolina counties, ranking 73rd in the state.

Notable variables for Hertford County within this dimension include:

<b>VARIABLE STRENGTH</b>	<b>FACTOR</b>	<b>HERTFORD COUNTY VALUE</b>	<b>NC COUNTY AVERAGE VALUE</b>
<b>Strongest</b>	Capital Assets Condition Ratio of County Government	0.63	0.51
<b>2nd Strongest</b>	Debt Service Ratio of County Government	0.07	0.07
<b>Bottom 10 in NC, Weakest</b>	Quick Ratio of County Government	5.11	16.4

---

### **Communication: 35.19**

This component assesses the availability and quality of communication infrastructure, such as broadband internet access, which is crucial for businesses and residents to stay connected and resilient during disruptions. Hertford County's performance on this dimension is fairly weak when compared to other North Carolina counties, ranking 82nd in the state.

Notable variables for Hertford County within this dimension include:

VARIABLE STRENGTH	FACTOR	HERTFORD COUNTY VALUE	NC COUNTY AVERAGE VALUE
<b>Strongest</b>	Local High-Speed Mobile Data Availability	0.65	0.66
<b>2nd Strongest</b>	In-Vehicle High-Speed Mobile Data Availability	0.28	0.37
<b>Bottom 10 in NC, Weakest</b>	Percentage of Population without Smartphones	25.61%	17.22%

### **Housing & Transportation: 48.16**

This component evaluates the accessibility and affordability of housing, as well as the availability of reliable transportation options, which are essential for a resilient workforce and economy. Hertford County's performance on this dimension is fairly weak when compared to other North Carolina counties, ranking 73rd in the state.

Notable variables for Hertford County within this dimension include:

VARIABLE STRENGTH	FACTOR	HERTFORD COUNTY VALUE	NC COUNTY AVERAGE VALUE
<b>Top 10 in NC, Strongest</b>	Percentage of People Driving Alone to Work	79.49%	86.36%
<b>2nd Strongest</b>	Percentage of Households with More Residents than Rooms	1.32%	2.1%
<b>Bottom 10 in NC, Weakest</b>	Percentage of Homes Built Before 1980	57.37%	40.9%

### **Healthcare: 36.12**

The healthcare component examines the availability and quality of healthcare facilities, services, and professionals, which are critical for maintaining a healthy and productive workforce. Hertford County's performance on this dimension is fairly strong when compared to other North Carolina counties, ranking 19th in the state.

Notable variables for Hertford County within this dimension include:

VARIABLE STRENGTH	FACTOR	HERTFORD COUNTY VALUE	NC COUNTY AVERAGE VALUE
<b>Strongest</b>	Opioid Deaths per 100,000 Residents	21.1	38.73
<b>2nd Strongest</b>	Nursing Home Beds per	35.21	27.53

	1,000 Residents of Age 65+		
<b>Weakest</b>	Mental Health Professionals per 10,000 Residents	4.11	6.6

### Community Cohesion: 32.21

This component looks at the strength of social networks, community engagement, and the ability of residents to work together to address challenges and support one another during times of adversity. Hertford County's performance on this dimension is weak when compared to other North Carolina counties, ranking 92nd in the state.

Notable variables for Hertford County within this dimension include:

VARIABLE STRENGTH	FACTOR	HERTFORD COUNTY VALUE	NC COUNTY AVERAGE VALUE
<b>Strongest</b>	Property Crimes per 10,000 Residents	12.79	15.74
<b>2nd Strongest</b>	Violent Crimes per 10,000 Residents	3.11	3.07
<b>Bottom 10 in NC</b>	Nonprofits Organizations per 1,000 Residents	1	3.17
<b>Bottom 10 in NC, Weakest</b>	Yearly Population Change Percentage	-2.165%	0.906%

### Socioeconomics: 15.09

This component considers factors such as income levels, poverty rates, and inequality, which can impact a community's ability to withstand and recover from economic shocks. Hertford County's performance on this dimension is weak when compared to other North Carolina counties, ranking 94th in the state.

Notable variables for Hertford County within this dimension include:

VARIABLE STRENGTH	FACTOR	HERTFORD COUNTY VALUE	NC COUNTY AVERAGE VALUE
<b>Strongest</b>	Percentage of Population without Health Insurance	10.79%	11.23%
<b>2nd Strongest</b>	Gini Coefficient (Income Inequality)	0.48	0.46
<b>Bottom 10 in NC</b>	Median Household Income	\$54,1	\$70,088
<b>Bottom 10 in NC,</b>	Percentage of Households	31.4%	24.53%

<b>Weakest</b>	Spending more than 30% Income on Housing
----------------	---

### **Education: 16.32**

This component evaluates the quality of educational institutions and the educational attainment levels of the local population, which play a crucial role in developing a skilled and adaptable workforce. Hertford County's performance on this dimension is weak when compared to other North Carolina counties, ranking 97th in the state.

Notable variables for Hertford County within this dimension include:

VARIABLE STRENGTH	FACTOR	HERTFORD COUNTY VALUE	NC COUNTY AVERAGE VALUE
<b>Strongest</b>	Student to Teacher Ratio	13	14
<b>2nd Strongest</b>	Graduation Percentage	88.4%	88.03%
<b>Bottom 10 in NC</b>	Teacher Attrition Rate	0.19	0.12
<b>Bottom 10 in NC, Weakest</b>	Dropout Rate	3.92%	1.65%

### **Household Characteristics: 37.78**

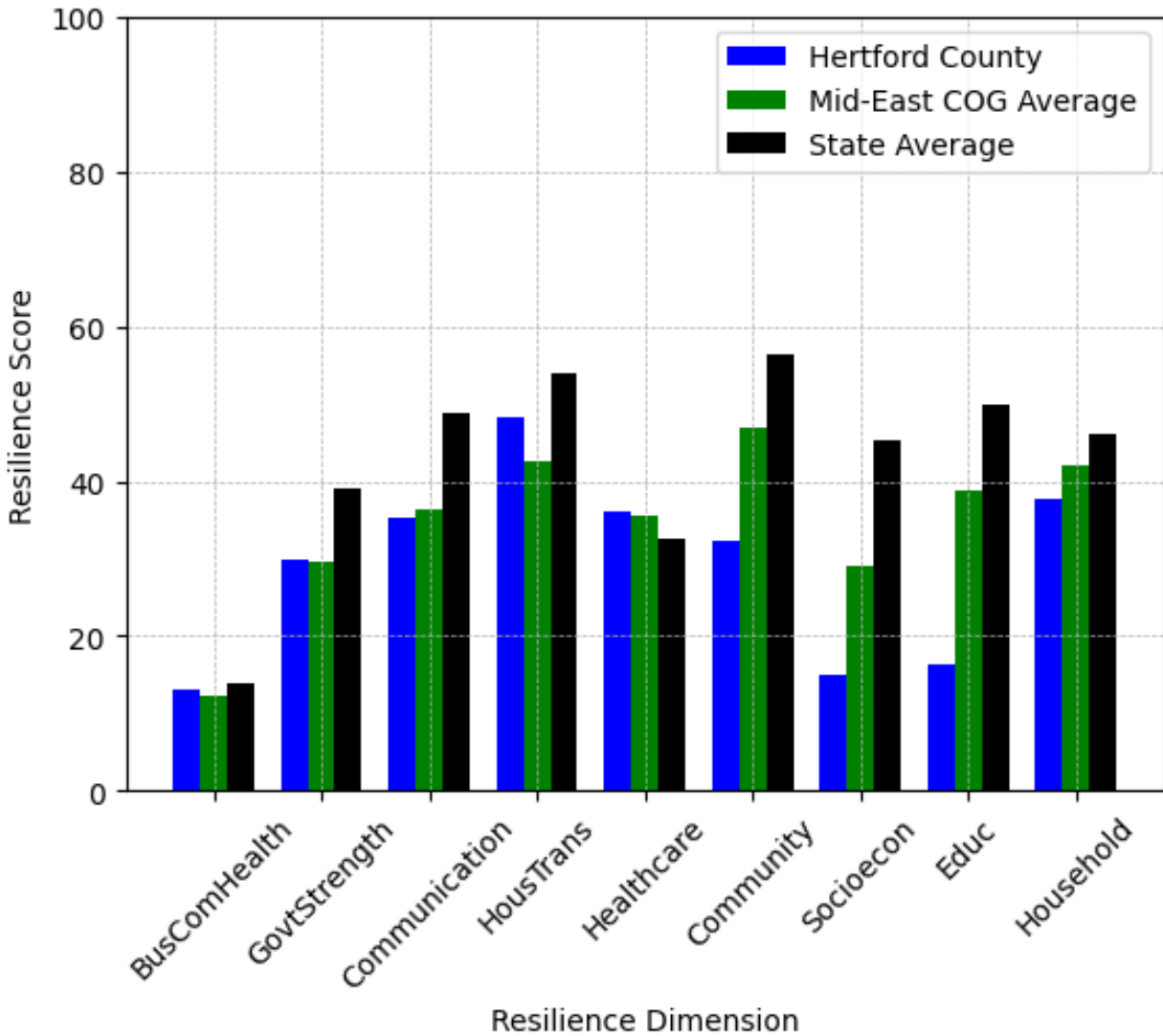
This component examines factors such as the proportion of single-parent households, age distribution, and the proportion of individuals with disabilities, as these elements can influence a community's resilience and ability to recover from economic disruptions. Hertford County's performance on this dimension is average when compared to other North Carolina counties, ranking 75th in the state.

Notable variables for Hertford County within this dimension include:

VARIABLE STRENGTH	FACTOR	HERTFORD COUNTY VALUE	NC COUNTY AVERAGE VALUE
<b>Strongest</b>	Percentage of Population 17 and Younger	17.93%	20.37%
<b>2nd Strongest</b>	Percentage of Population with Limited English Proficiency	0.564%	1.454%
<b>Bottom 10 in NC, Weakest</b>	Percentage of Population with a Disability	20.866%	16.566%



## Hertford County's Resilience Dimension Scores Over Time As Compared to the Region and State Averages



*Note: Resilience Scores are normalized from 1 to 100 with the most resilient county scoring 100. The Resilience Score is determined based on a county's performance relative to NC's other 99 counties.*

## **Notable Trends in Resilience Indicators, 2017-2022**

*NOTE: The key trends in the this section are identified based on change rates of at least .15 standard deviations over at least 5 years. Variables are positively oriented such that a positive trend indicates improved performance (e.g., 'improvement' in property crime is a lower crime rate, while 'decline' in property crime indicates a higher crime rate).*

### **Trends in the Business Community Health dimension:**

Total Employment Level: **-268** (5-year change rate = **-2.94%**, from 9,101 to 8,833)

↓ Change in rank from 70 to 72 in NC

Average Weekly Wages: **171 dollars** (5-year change rate = **23.82%**, from 718 to 889)

↓ Change in rank from 51 to 64 in NC

Real GDP in Current Dollars: **49,434 dollars** (5-year change rate = **6.38%**, from 775,209 to 824,643)

↑ Change in rank from 74 to 73 in NC

### **Trends in the County Government Fiscal Strength dimension:**

Adjusted Tax Base: **19,629 dollars** (5-year change rate = **31.35%**, from 62,603 to 82,232)

↑ Change in rank from 93 to 85 in NC

County Sales Tax: **1,354,288 dollars** (5-year change rate = **27.61%**, from 4,905,852 to 6,260,140)

↓ Change in rank from 74 to 77 in NC

### **Trends in the Housing & Transportation dimension:**

Ratio of Average Estimated Home Value to Median Income : **2.63** (5-year change rate = **26.89%**, from 9.77 to 12.4)

↑ Change in rank from 68 to 66 in NC

Average Available Rent Money less the Average HUD Fair Market Rent: **167.1 dollars** (5-year change rate = **50.33%**, from 332 to 499.1)

↑ Change in rank from 91 to 89 in NC



**Trends in the Healthcare dimension:**

Opioid Deaths per 100,000 Residents: **4.4** (5-year change rate = **26.35%**, from 16.7 to 21.1)

↑ Change in rank from 27 to 12 in NC

Nurses per 10,000 Residents: **5.85** (5-year change rate = **2.9%**, from 201.61 to 207.46)

↑ Change in rank from 44 to 39 in NC

Physicians per 10,000 Residents: **2.81** (5-year change rate = **13.2%**, from 21.28 to 24.09)

↑ Change in rank from 20 to 16 in NC

Mental Health Professionals per 10,000 Residents: **-0.77** (5-year change rate = **-15.78%**, from 4.88 to 4.11)

↓ Change in rank from 57 to 75 in NC

**Trends in the Community Cohesion dimension:**

Violent Crimes per 10,000 Residents: **-0.68** (4-year change rate = **-17.88%**, from 3.79 to 3.11)

↑ Change in rank from 76 to 63 in NC

Property Crimes per 10,000 Residents: **-10.02** (4-year change rate = **-43.93%**, from 22.82 to 12.79)

↑ Change in rank from 63 to 36 in NC

Nonprofits Organizations per 1,000 Residents: **-0.98** (5-year change rate = **-49.57%**, from 1.98 to 1)

↓ Change in rank from 77 to 95 in NC

**Trends in the Socioeconomics dimension:**

Unemployment Rate (Q4): **-0.3 percent** (5-year change rate = **-5.1%**, from 5.2 to 5)

↓ Change in rank from 79 to 91 in NC

Median Household Income: **12,100 dollars** (5-year change rate = **28.81%**, from 42,000 to 54,100)

↑ Change in rank from 94 to 92 in NC

**Trends in the Education dimension:**

Graduation Percentage: **2 percent** (5-year change rate = **2.31%**, from 86.4 to 88.4)

↑ Change in rank from 56 to 50 in NC

Dropout Rate: **0.31 percent** (5-year change rate = **8.66%**, from 3.61 to 3.92)

↓ Change in rank from 93 to 100 in NC

Student to Teacher Ratio: **-1** (4-year change rate = **-10%**, from 15 to 13)

↑ Change in rank from 52 to 28 in NC

3rd Grade Reading Proficiency: **-19.8 percent** (5-year change rate = **-38.98%**, from 50.8 to 31)

↓ Change in rank from 66 to 87 in NC

**Data Advisements:**

- Availability of Broadband Services is not available for 2022 and was excluded from calculating this county's dimension and resilience score.
- Adoption Rate of Broadband Services is not available for 2022 and was excluded from calculating this county's dimension and resilience score.