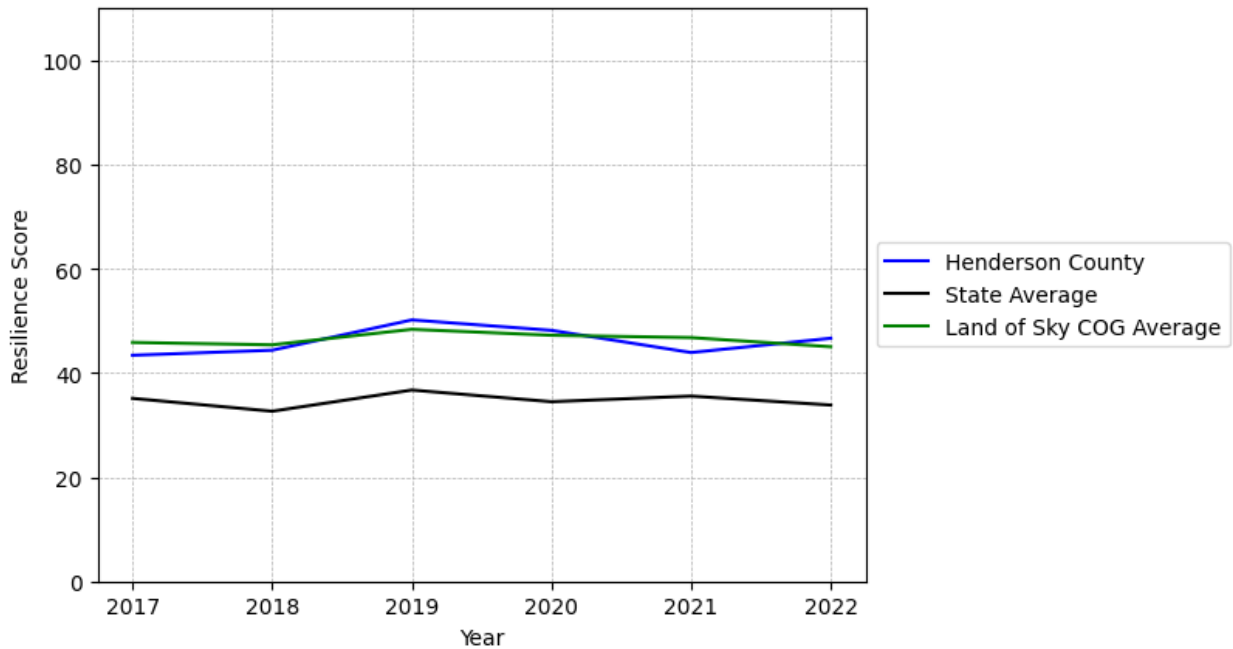


Henderson County Summary

Resilience Score: 46.65

In 2022, Henderson County achieved a Resilience Score of 46.65, which is fairly strong as compared to the North Carolina State average.

**Henderson County's Resilience Score Over Time
As Compared to the Region and State Averages**



Note: Resilience Scores are normalized from 1 to 100 with the most resilient county scoring 100. The Resilience Score is determined based on a county's performance relative to NC's other 99 counties.

Henderson County's Resilience Score is comprised of 9 distinct dimensions of resilience. Below are Henderson County's scores for 2022 on those 9 dimensions, and their rank relative to other North Carolina counties.

Business Community Health: 16.2

This component examines the strength and diversity of the local business community, including factors such as the number of businesses, employment levels, and industry diversity. Henderson County's performance on this dimension is average when compared to other North Carolina counties, ranking 25th in the state.

Notable variables for Henderson County within this dimension include:

VARIABLE STRENGTH	FACTOR	HENDERSON COUNTY VALUE	NC COUNTY AVERAGE VALUE
Strongest	Average Weekly Wages	\$1,034	\$951
2nd Strongest	Percentage of Companies in Science, Engineering, & Technology Industries	8.36%	6.13%
Weakest	Private Sector Diversity	0.138	0.28

County Government Fiscal Strength: 40.11

This component looks at the financial health of local governments, including their ability to generate revenue, manage debt, and maintain adequate reserves to weather economic downturns. Henderson County's performance on this dimension is average when compared to other North Carolina counties, ranking 56th in the state.

Notable variables for Henderson County within this dimension include:

VARIABLE STRENGTH	FACTOR	HENDERSON COUNTY VALUE	NC COUNTY AVERAGE VALUE
Strongest	Dependency Ratio of County Government	0.11	0.16
2nd Strongest	County Sales Tax	\$37,603,96	\$31,151,902
Weakest	Debt Service Ratio of County Government	0.14	0.07

Communication: 66.9

This component assesses the availability and quality of communication infrastructure, such as broadband internet access, which is crucial for businesses and residents to stay connected and resilient during disruptions. Henderson County's performance on this dimension is fairly strong when compared to other North Carolina counties, ranking 21st in the state.

Notable variables for Henderson County within this dimension include:

VARIABLE STRENGTH	FACTOR	HENDERSON COUNTY VALUE	NC COUNTY AVERAGE VALUE
Strongest	In-Vehicle High-Speed Mobile Data Availability	0.56	0.37
2nd Strongest	Percentage of Population without Smartphones	13.01%	17.22%
Weakest	Local High-Speed Mobile Data Availability	0.74	0.66

Housing & Transportation: 76.16

This component evaluates the accessibility and affordability of housing, as well as the availability of reliable transportation options, which are essential for a resilient workforce and economy.

Henderson County's performance on this dimension is fairly strong when compared to other North Carolina counties, ranking 22nd in the state.

Notable variables for Henderson County within this dimension include:

VARIABLE STRENGTH	FACTOR	HENDERSON COUNTY VALUE	NC COUNTY AVERAGE VALUE
Top 10 in NC, Strongest	Percentage of People with Commute Times Over 45 Minutes	9.34%	16.69%
2nd Strongest	Percentage of Population without Vehicles	3.68%	5.75%
Bottom 10 in NC, Weakest	Average Available Rent Money less the Average HUD Fair Market Rent	\$397.4	\$799.87

Healthcare: 34.89

The healthcare component examines the availability and quality of healthcare facilities, services, and professionals, which are critical for maintaining a healthy and productive workforce.

Henderson County's performance on this dimension is average when compared to other North Carolina counties, ranking 22nd in the state.

Notable variables for Henderson County within this dimension include:

VARIABLE STRENGTH	FACTOR	HENDERSON COUNTY VALUE	NC COUNTY AVERAGE VALUE
Strongest	Physicians per 10,000 Residents	24.22	16.05
2nd Strongest	Mental Health Professionals per 10,000	9.29	6.6

	Residents		
Weakest	Nursing Home Beds per 1,000 Residents of Age 65+	26.94	27.53

Community Cohesion: 62.86

This component looks at the strength of social networks, community engagement, and the ability of residents to work together to address challenges and support one another during times of adversity. Henderson County's performance on this dimension is average when compared to other North Carolina counties, ranking 36th in the state.

Notable variables for Henderson County within this dimension include:

VARIABLE STRENGTH	FACTOR	HENDERSON COUNTY VALUE	NC COUNTY AVERAGE VALUE
Strongest	Violent Crimes per 10,000 Residents	1.3	3.07
2nd Strongest	Yearly Population Change Percentage	1.197%	0.906%
Weakest	Nonprofits Organizations per 1,000 Residents	2.27	3.17

Socioeconomics: 62.58

This component considers factors such as income levels, poverty rates, and inequality, which can impact a community's ability to withstand and recover from economic shocks. Henderson County's performance on this dimension is fairly strong when compared to other North Carolina counties, ranking 22nd in the state.

Notable variables for Henderson County within this dimension include:

VARIABLE STRENGTH	FACTOR	HENDERSON COUNTY VALUE	NC COUNTY AVERAGE VALUE
Top 10 in NC, Strongest	Unemployment Rate (Q4)	3%	3.9%
2nd Strongest	Population 25+ with at least a Bachelor's Degree	33.96%	24.4%
Weakest	Percentage of Population without Health Insurance	12.29%	11.23%

Education: 62.25

This component evaluates the quality of educational institutions and the educational attainment levels of the local population, which play a crucial role in developing a skilled and adaptable workforce. Henderson County's performance on this dimension is fairly strong when compared to other North Carolina counties, ranking 15th in the state.

Notable variables for Henderson County within this dimension include:

VARIABLE STRENGTH	FACTOR	HENDERSON COUNTY VALUE	NC COUNTY AVERAGE VALUE
Top 10 in NC, Strongest	Graduation Percentage	93.9%	88.03%
Top 10 in NC, 2nd Strongest	Teacher Attrition Rate	0.07	0.12
Weakest	Student to Teacher Ratio	15	14

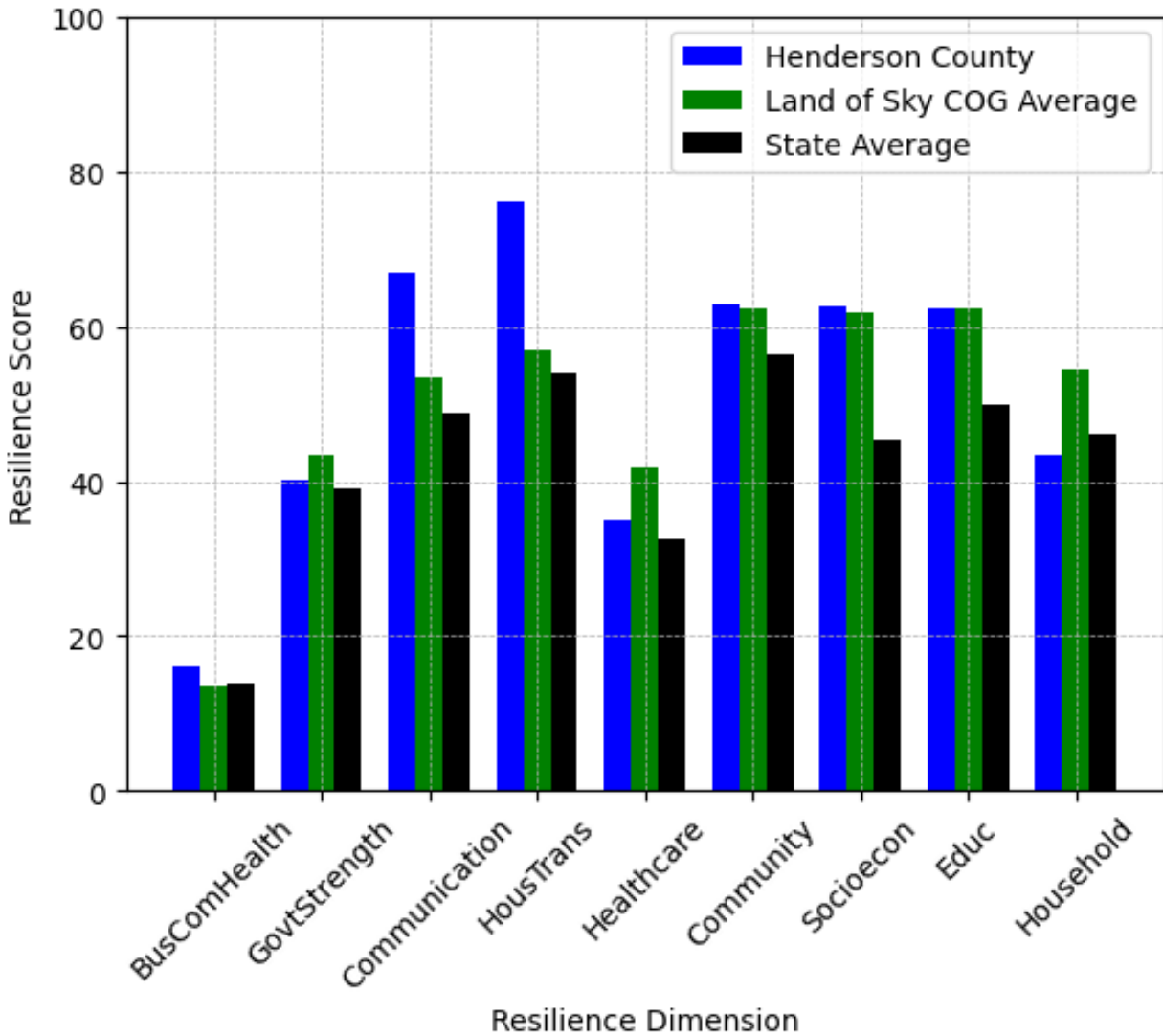
Household Characteristics: 43.28

This component examines factors such as the proportion of single-parent households, age distribution, and the proportion of individuals with disabilities, as these elements can influence a community's resilience and ability to recover from economic disruptions. Henderson County's performance on this dimension is average when compared to other North Carolina counties, ranking 58th in the state.

Notable variables for Henderson County within this dimension include:

VARIABLE STRENGTH	FACTOR	HENDERSON COUNTY VALUE	NC COUNTY AVERAGE VALUE
Strongest	Percentage of Population with a Disability	14.844%	16.566%
2nd Strongest	Percentage of Population 17 and Younger	18.6%	20.37%
Weakest	Percentage of Population 65 and Older	26.1%	20.53%

Henderson County's Resilience Dimension Scores Over Time As Compared to the Region and State Averages



Note: Resilience Scores are normalized from 1 to 100 with the most resilient county scoring 100. The Resilience Score is determined based on a county's performance relative to NC's other 99 counties.

Notable Trends in Resilience Indicators, 2017-2022

NOTE: The key trends in the this section are identified based on change rates of at least .15 standard deviations over at least 5 years. Variables are positively oriented such that a positive trend indicates improved performance (e.g., 'improvement' in property crime is a lower crime rate, while 'decline' in property crime indicates a higher crime rate).

Trends in the Business Community Health dimension:

Total Employment Level: **3,171** (5-year change rate = **8.29%**, from 38,262 to 41,433)

↑ Change in rank from 26 to 22 in NC

Average Weekly Wages: **248 dollars** (5-year change rate = **31.55%**, from 786 to 1,034)

↑ Change in rank from 26 to 17 in NC

Real GDP in Current Dollars: **356,152 dollars** (5-year change rate = **8.84%**, from 4,029,645 to 4,385,797)

↑ Change in rank from 27 to 26 in NC

Trends in the County Government Fiscal Strength dimension:

Adjusted Tax Base: **28,765 dollars** (5-year change rate = **26.05%**, from 110,441 to 139,206)

↑ Change in rank from 32 to 24 in NC

County Sales Tax: **13,146,592 dollars** (5-year change rate = **53.75%**, from 24,457,368 to 37,603,960)

↑ Change in rank from 21 to 20 in NC

Trends in the Housing & Transportation dimension:

Ratio of Average Estimated Home Value to Median Income : **1.85** (5-year change rate = **45.73%**, from 4.04 to 5.89)

↓ Change in rank from 36 to 39 in NC

Average Available Rent Money less the Average HUD Fair Market Rent: **-123.1 dollars** (5-year change rate = **-23.65%**, from 520.5 to 397.4)

↓ Change in rank from 48 to 98 in NC

Trends in the Healthcare dimension:

Opioid Deaths per 100,000 Residents: **2.1** (5-year change rate = **6.75%**, from 31.1 to 33.2)

↑ Change in rank from 72 to 37 in NC

Nurses per 10,000 Residents: **-19.13** (5-year change rate = **-7.05%**, from 271.47 to 252.34)

↓ Change in rank from 27 to 30 in NC

Physicians per 10,000 Residents: **0.46** (5-year change rate = **1.94%**, from 23.76 to 24.22)

→ No change in rank

Mental Health Professionals per 10,000 Residents: **2.8** (5-year change rate = **43.14%**, from 6.49 to 9.29)

↑ Change in rank from 39 to 18 in NC

Trends in the Community Cohesion dimension:

Nonprofits Organizations per 1,000 Residents: **0.31** (5-year change rate = **15.99%**, from 1.96 to 2.27)

↑ Change in rank from 78 to 69 in NC

Trends in the Socioeconomics dimension:

Unemployment Rate (Q4): **-0.6 percent** (5-year change rate = **-15.74%**, from 3.6 to 3)

↑ Change in rank from 7 to 5 in NC

Median Household Income: **18,700 dollars** (5-year change rate = **30.51%**, from 61,300 to 80,000)

↓ Change in rank from 20 to 22 in NC

Trends in the Education dimension:

Graduation Percentage: **2.3 percent** (5-year change rate = **2.51%**, from 91.6 to 93.9)

↑ Change in rank from 17 to 7 in NC

Dropout Rate: **-0.51 percent** (5-year change rate = **-26.81%**, from 1.89 to 1.39)

↑ Change in rank from 38 to 37 in NC

Student to Teacher Ratio: **-1** (4-year change rate = **-5.43%**, from 15 to 15)

↑ Change in rank from 69 to 63 in NC

3rd Grade Reading Proficiency: **-11.1 percent** (5-year change rate = **-17.7%**, from 62.7 to 51.6)

↓ Change in rank from 15 to 23 in NC

Data Advisements:

- Availability of Broadband Services is not available for 2022 and was excluded from calculating this county's dimension and resilience score.
- Adoption Rate of Broadband Services is not available for 2022 and was excluded from calculating this county's dimension and resilience score.