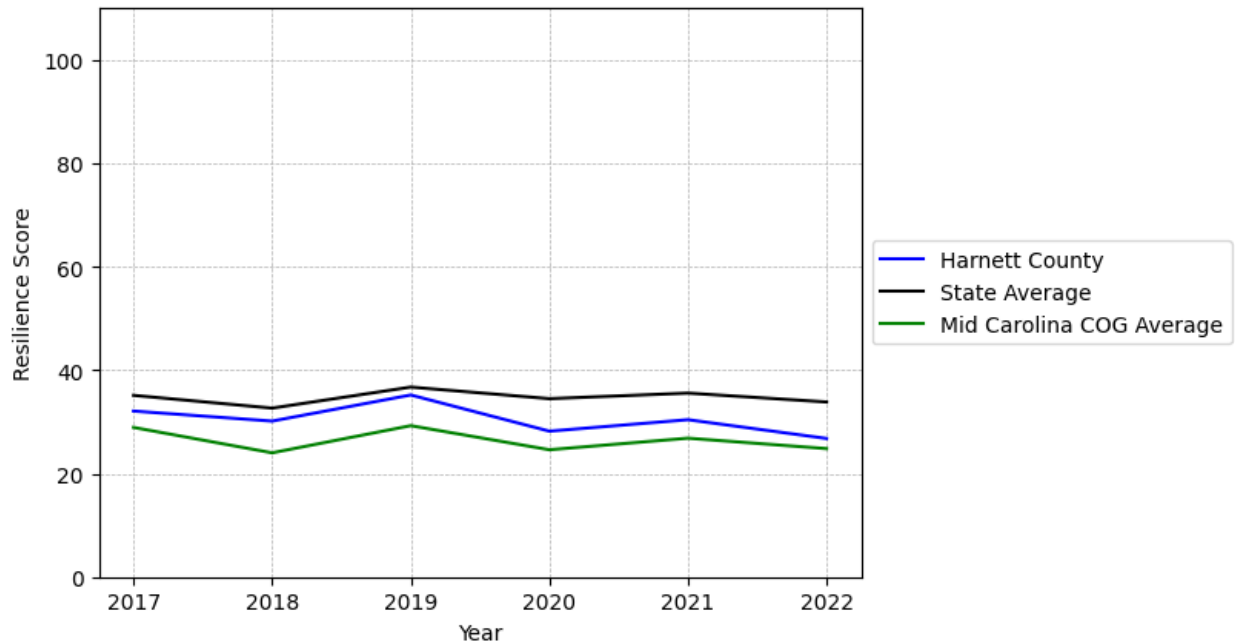


Harnett County Summary

Resilience Score: 26.78

In 2022, Harnett County achieved a Resilience Score of 26.78, which is average as compared to the North Carolina State average.

**Harnett County's Resilience Score Over Time
As Compared to the Region and State Averages**



Note: Resilience Scores are normalized from 1 to 100 with the most resilient county scoring 100. The Resilience Score is determined based on a county's performance relative to NC's other 99 counties.

Harnett County's Resilience Score is comprised of 9 distinct dimensions of resilience. Below are Harnett County's scores for 2022 on those 9 dimensions, and their rank relative to other North Carolina counties.

Business Community Health: 4.77

This component examines the strength and diversity of the local business community, including factors such as the number of businesses, employment levels, and industry diversity. Harnett County's performance on this dimension is fairly weak when compared to other North Carolina counties, ranking 90th in the state.

Notable variables for Harnett County within this dimension include:

VARIABLE STRENGTH	FACTOR	HARNETT COUNTY VALUE	NC COUNTY AVERAGE VALUE
Strongest	Total Employment Level	27,671	45,758
2nd Strongest	Real GDP in Current Dollars	\$2,716,268	\$6,092,555
Weakest	Ratio of Available Child Care Slots to Number of Children under Five	0.47	0.59

County Government Fiscal Strength: 35.13

This component looks at the financial health of local governments, including their ability to generate revenue, manage debt, and maintain adequate reserves to weather economic downturns. Harnett County's performance on this dimension is average when compared to other North Carolina counties, ranking 63rd in the state.

Notable variables for Harnett County within this dimension include:

VARIABLE STRENGTH	FACTOR	HARNETT COUNTY VALUE	NC COUNTY AVERAGE VALUE
Strongest	County Sales Tax	\$36,651,18	\$31,151,902
2nd Strongest	Solvency Ratio of County Government	58.3	46.7
Bottom 10 in NC, Weakest	Adjusted Tax Base	\$70,064	\$124,092

Communication: 62.33

This component assesses the availability and quality of communication infrastructure, such as broadband internet access, which is crucial for businesses and residents to stay connected and resilient during disruptions. Harnett County's performance on this dimension is fairly strong when compared to other North Carolina counties, ranking 28th in the state.

Notable variables for Harnett County within this dimension include:

VARIABLE STRENGTH	FACTOR	HARNETT COUNTY VALUE	NC COUNTY AVERAGE VALUE
Strongest	Percentage of Population without Smartphones	11.32%	17.22%
2nd Strongest	Local High-Speed Mobile Data Availability	0.8	0.66
Weakest	Broadband Availability	0.56	0.6

Housing & Transportation: 68.5

This component evaluates the accessibility and affordability of housing, as well as the availability of reliable transportation options, which are essential for a resilient workforce and economy. Harnett County's performance on this dimension is average when compared to other North Carolina counties, ranking 38th in the state.

Notable variables for Harnett County within this dimension include:

VARIABLE STRENGTH	FACTOR	HARNETT COUNTY VALUE	NC COUNTY AVERAGE VALUE
Strongest	Percentage of Homes Built Before 1980	28.57%	40.9%
2nd Strongest	Ratio of Average Estimated Home Value to Median Income	4.09	13.67
Bottom 10 in NC, Weakest	Percentage of People with Commute Times Over 45 Minutes	26.73%	16.69%

Healthcare: 20.73

The healthcare component examines the availability and quality of healthcare facilities, services, and professionals, which are critical for maintaining a healthy and productive workforce. Harnett County's performance on this dimension is fairly weak when compared to other North Carolina counties, ranking 69th in the state.

Notable variables for Harnett County within this dimension include:

VARIABLE STRENGTH	FACTOR	HARNETT COUNTY VALUE	NC COUNTY AVERAGE VALUE
Strongest	Nurses per 10,000 Residents	220.4	262.64
2nd Strongest	Mental Health Professionals per 10,000 Residents	5.73	6.6

Weakest	Nursing Home Beds per 1,000 Residents of Age 65+	22.05	27.53
----------------	--	-------	-------

Community Cohesion: 53.68

This component looks at the strength of social networks, community engagement, and the ability of residents to work together to address challenges and support one another during times of adversity. Harnett County's performance on this dimension is average when compared to other North Carolina counties, ranking 58th in the state.

Notable variables for Harnett County within this dimension include:

VARIABLE STRENGTH	FACTOR	HARNETT COUNTY VALUE	NC COUNTY AVERAGE VALUE
Strongest	Yearly Population Change Percentage	2.473%	0.906%
2nd Strongest	Violent Crimes per 10,000 Residents	2.96	3.07
Weakest	Nonprofits Organizations per 1,000 Residents	1.45	3.17

Socioeconomics: 49.53

This component considers factors such as income levels, poverty rates, and inequality, which can impact a community's ability to withstand and recover from economic shocks. Harnett County's performance on this dimension is average when compared to other North Carolina counties, ranking 40th in the state.

Notable variables for Harnett County within this dimension include:

VARIABLE STRENGTH	FACTOR	HARNETT COUNTY VALUE	NC COUNTY AVERAGE VALUE
Strongest	Gini Coefficient (Income Inequality)	0.43	0.46
2nd Strongest	Median Household Income	\$74,	\$70,088
Weakest	Unemployment Rate (Q4)	4%	3.9%

Education: 21.69

This component evaluates the quality of educational institutions and the educational attainment levels of the local population, which play a crucial role in developing a skilled and adaptable workforce. Harnett County's performance on this dimension is weak when compared to other North Carolina counties, ranking 91st in the state.

Notable variables for Harnett County within this dimension include:

VARIABLE STRENGTH	FACTOR	HARNETT COUNTY VALUE	NC COUNTY AVERAGE VALUE
Strongest	Dropout Rate	1.67%	1.65%
2nd Strongest	Graduation Percentage	88%	88.03%
Bottom 10 in NC	Local LEA Financial Resources (per ADM)	\$3,863	\$8,683
Bottom 10 in NC, Weakest	Teacher Attrition Rate	0.2	0.12

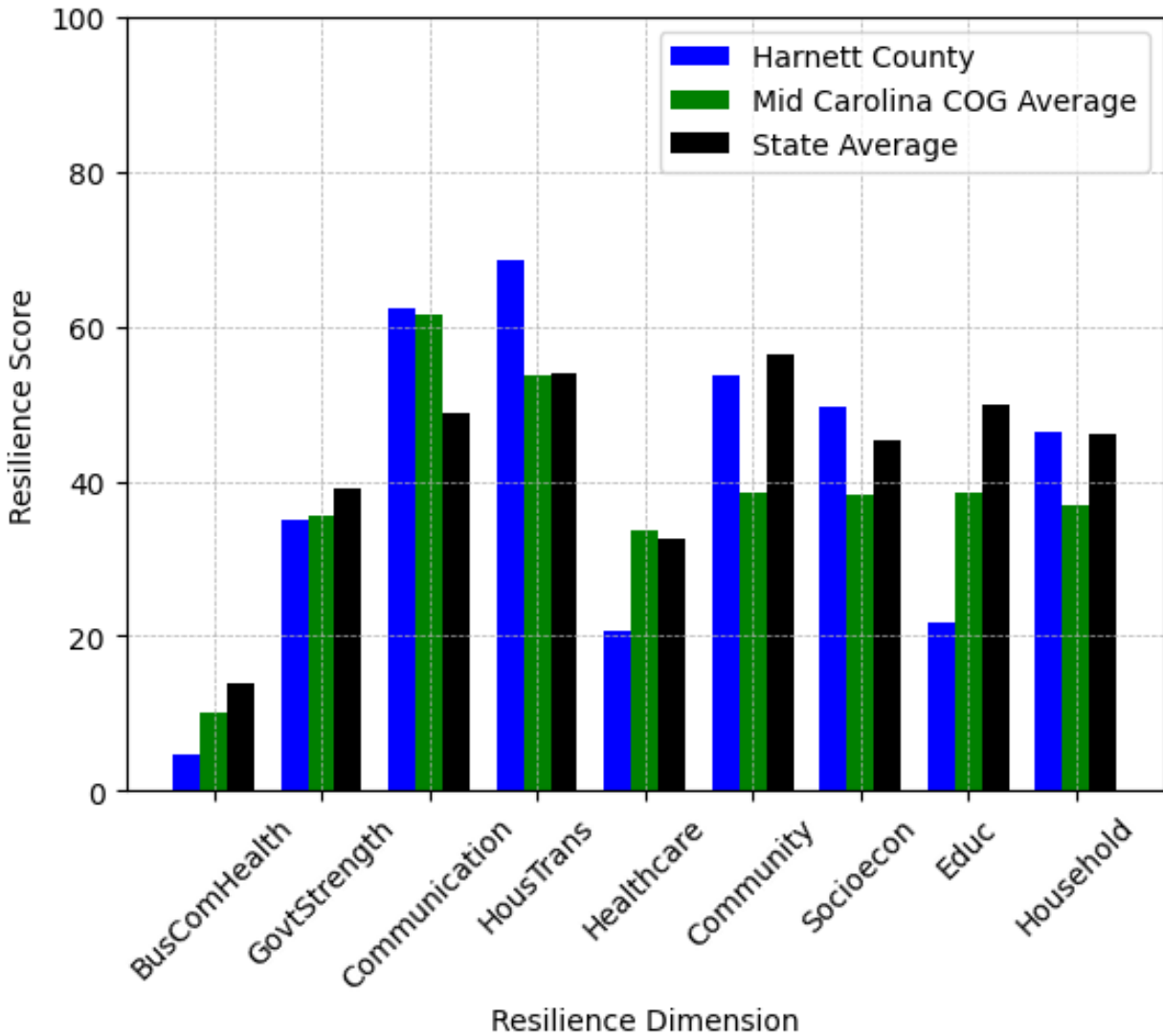
Household Characteristics: 46.34

This component examines factors such as the proportion of single-parent households, age distribution, and the proportion of individuals with disabilities, as these elements can influence a community's resilience and ability to recover from economic disruptions. Harnett County's performance on this dimension is average when compared to other North Carolina counties, ranking 47th in the state.

Notable variables for Harnett County within this dimension include:

VARIABLE STRENGTH	FACTOR	HARNETT COUNTY VALUE	NC COUNTY AVERAGE VALUE
Top 10 in NC, Strongest	Percentage of Population 65 and Older	13.17%	20.53%
2nd Strongest	Percentage of Single Parent Households	30.278%	36.132%
Bottom 10 in NC, Weakest	Percentage of Population 17 and Younger	25.53%	20.37%

Harnett County's Resilience Dimension Scores Over Time As Compared to the Region and State Averages



Note: Resilience Scores are normalized from 1 to 100 with the most resilient county scoring 100. The Resilience Score is determined based on a county's performance relative to NC's other 99 counties.

Notable Trends in Resilience Indicators, 2017-2022

NOTE: The key trends in the this section are identified based on change rates of at least .15 standard deviations over at least 5 years. Variables are positively oriented such that a positive trend indicates improved performance (e.g., 'improvement' in property crime is a lower crime rate, while 'decline' in property crime indicates a higher crime rate).

Trends in the Business Community Health dimension:

Total Employment Level: **1,949** (5-year change rate = **7.58%**, from 25,722 to 27,671)

↑ Change in rank from 35 to 34 in NC

Average Weekly Wages: **175 dollars** (5-year change rate = **25%**, from 700 to 875)

↓ Change in rank from 60 to 68 in NC

Real GDP in Current Dollars: **160,566 dollars** (5-year change rate = **6.28%**, from 2,555,702 to 2,716,268)

↑ Change in rank from 37 to 36 in NC

Trends in the County Government Fiscal Strength dimension:

Adjusted Tax Base: **10,301 dollars** (5-year change rate = **17.24%**, from 59,763 to 70,064)

↓ Change in rank from 95 to 96 in NC

County Sales Tax: **14,478,304 dollars** (5-year change rate = **65.3%**, from 22,172,876 to 36,651,180)

↑ Change in rank from 25 to 21 in NC

Trends in the Housing & Transportation dimension:

Ratio of Average Estimated Home Value to Median Income : **0.85** (5-year change rate = **26.3%**, from 3.24 to 4.09)

↑ Change in rank from 25 to 23 in NC

Average Available Rent Money less the Average HUD Fair Market Rent: **390.6 dollars** (5-year change rate = **79.29%**, from 492.6 to 883.2)

↑ Change in rank from 57 to 39 in NC

Trends in the Healthcare dimension:

Opioid Deaths per 100,000 Residents: **14** (5-year change rate = **53.03%**, from 26.4 to 40.4)

↓ Change in rank from 55 to 62 in NC

Physicians per 10,000 Residents: **0.33** (5-year change rate = **4.54%**, from 7.27 to 7.6)

↓ Change in rank from 74 to 75 in NC

Mental Health Professionals per 10,000 Residents: **0.55** (5-year change rate = **10.62%**, from 5.18 to 5.73)

↑ Change in rank from 52 to 48 in NC

Trends in the Community Cohesion dimension:

Violent Crimes per 10,000 Residents: **0.42** (4-year change rate = **16.46%**, from 2.54 to 2.96)

↑ Change in rank from 63 to 60 in NC

Property Crimes per 10,000 Residents: **2.18** (4-year change rate = **14.5%**, from 15.06 to 17.24)

↓ Change in rank from 33 to 66 in NC

Nonprofits Organizations per 1,000 Residents: **-0.68** (5-year change rate = **-31.83%**, from 2.13 to 1.45)

↓ Change in rank from 73 to 87 in NC

Trends in the Socioeconomics dimension:

Unemployment Rate (Q4): **-0.8 percent** (5-year change rate = **-16.08%**, from 4.8 to 4)

↓ Change in rank from 68 to 70 in NC

Median Household Income: **22,800 dollars** (5-year change rate = **44.53%**, from 51,200 to 74,000)

↑ Change in rank from 56 to 33 in NC

Trends in the Education dimension:

Graduation Percentage: **5.6 percent** (5-year change rate = **6.8%**, from 82.4 to 88)

↑ Change in rank from 87 to 53 in NC

Dropout Rate: **-0.86 percent** (5-year change rate = **-34.04%**, from 2.53 to 1.67)

↑ Change in rank from 62 to 51 in NC

Student to Teacher Ratio: **-1** (4-year change rate = **-3.12%**, from 16 to 16)

↓ Change in rank from 86 to 90 in NC

3rd Grade Reading Proficiency: **-15.2 percent** (5-year change rate = **-29.4%**, from 51.7 to 36.5)

↓ Change in rank from 60 to 73 in NC

Data Advisements:

- Availability of Broadband Services is not available for 2022 and was excluded from calculating this county's dimension and resilience score.
- Adoption Rate of Broadband Services is not available for 2022 and was excluded from calculating this county's dimension and resilience score.