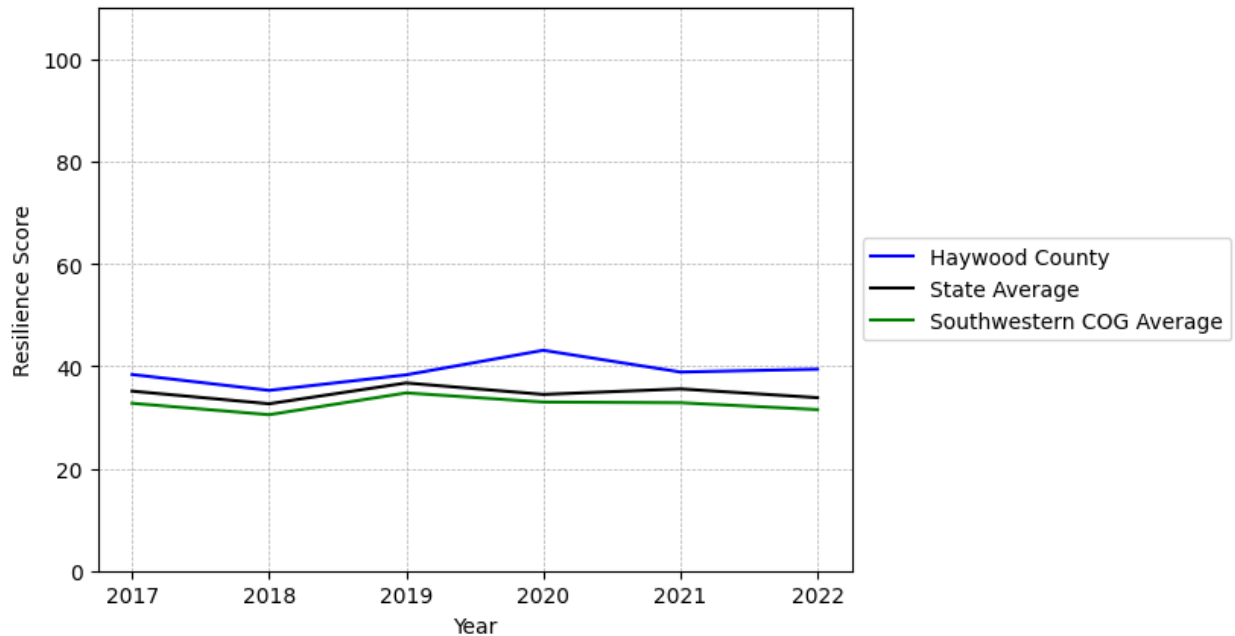


Haywood County Summary

Resilience Score: 39.4

In 2022, Haywood County achieved a Resilience Score of 39.4, which is average as compared to the North Carolina State average.

**Haywood County's Resilience Score Over Time
As Compared to the Region and State Averages**



Note: Resilience Scores are normalized from 1 to 100 with the most resilient county scoring 100. The Resilience Score is determined based on a county's performance relative to NC's other 99 counties.

Haywood County's Resilience Score is comprised of 9 distinct dimensions of resilience. Below are Haywood County's scores for 2022 on those 9 dimensions, and their rank relative to other North Carolina counties.

Business Community Health: 11.78

This component examines the strength and diversity of the local business community, including factors such as the number of businesses, employment levels, and industry diversity. Haywood County's performance on this dimension is average when compared to other North Carolina counties, ranking 48th in the state.

Notable variables for Haywood County within this dimension include:

VARIABLE STRENGTH	FACTOR	HAYWOOD COUNTY VALUE	NC COUNTY AVERAGE VALUE
Strongest	Ratio of Available Child Care Slots to Number of Children under Five	0.69	0.59
2nd Strongest	Percentage of Companies in Science, Engineering, & Technology Industries	6.31%	6.13%
Weakest	Private Sector Diversity	0.2	0.28

County Government Fiscal Strength: 33.97

This component looks at the financial health of local governments, including their ability to generate revenue, manage debt, and maintain adequate reserves to weather economic downturns. Haywood County's performance on this dimension is average when compared to other North Carolina counties, ranking 67th in the state.

Notable variables for Haywood County within this dimension include:

VARIABLE STRENGTH	FACTOR	HAYWOOD COUNTY VALUE	NC COUNTY AVERAGE VALUE
Strongest	Debt Service Ratio of County Government	0.03	0.07
2nd Strongest	Adjusted Tax Base	\$136,708	\$124,092
Weakest	Solvency Ratio of County Government	32.64	46.7

Communication: 44.6

This component assesses the availability and quality of communication infrastructure, such as broadband internet access, which is crucial for businesses and residents to stay connected and resilient during disruptions. Haywood County's performance on this dimension is average when compared to other North Carolina counties, ranking 65th in the state.

Notable variables for Haywood County within this dimension include:

VARIABLE STRENGTH	FACTOR	HAYWOOD COUNTY VALUE	NC COUNTY AVERAGE VALUE
Strongest	Percentage of Population without Smartphones	16.44%	17.22%
2nd Strongest	Broadband Availability	0.59	0.6
Weakest	Local High-Speed Mobile Data Availability	0.5	0.66

Housing & Transportation: 71.57

This component evaluates the accessibility and affordability of housing, as well as the availability of reliable transportation options, which are essential for a resilient workforce and economy.

Haywood County's performance on this dimension is fairly strong when compared to other North Carolina counties, ranking 29th in the state.

Notable variables for Haywood County within this dimension include:

VARIABLE STRENGTH	FACTOR	HAYWOOD COUNTY VALUE	NC COUNTY AVERAGE VALUE
Strongest	Percentage of Households with More Residents than Rooms	1.29%	2.1%
2nd Strongest	Percentage of People with Commute Times Over 45 Minutes	11.43%	16.69%
Weakest	Percentage of Homes Built Before 1980	46.15%	40.9%

Healthcare: 26.16

The healthcare component examines the availability and quality of healthcare facilities, services, and professionals, which are critical for maintaining a healthy and productive workforce. Haywood County's performance on this dimension is average when compared to other North Carolina counties, ranking 50th in the state.

Notable variables for Haywood County within this dimension include:

VARIABLE STRENGTH	FACTOR	HAYWOOD COUNTY VALUE	NC COUNTY AVERAGE VALUE
Strongest	Physicians per 10,000 Residents	17.49	16.05
2nd Strongest	Mental Health	7.47	6.6

	Professionals per 10,000 Residents		
Weakest	Opioid Deaths per 100,000 Residents	44.9	38.73

Community Cohesion: 64.92

This component looks at the strength of social networks, community engagement, and the ability of residents to work together to address challenges and support one another during times of adversity. Haywood County's performance on this dimension is average when compared to other North Carolina counties, ranking 31st in the state.

Notable variables for Haywood County within this dimension include:

VARIABLE STRENGTH	FACTOR	HAYWOOD COUNTY VALUE	NC COUNTY AVERAGE VALUE
Top 10 in NC, Strongest	Percentage of Inactive Voters	8.08%	11.3%
2nd Strongest	Nonprofits Organizations per 1,000 Residents	3.65	3.17
Weakest	Property Crimes per 10,000 Residents	18.75	15.74

Socioeconomics: 55.98

This component considers factors such as income levels, poverty rates, and inequality, which can impact a community's ability to withstand and recover from economic shocks. Haywood County's performance on this dimension is fairly strong when compared to other North Carolina counties, ranking 29th in the state.

Notable variables for Haywood County within this dimension include:

VARIABLE STRENGTH	FACTOR	HAYWOOD COUNTY VALUE	NC COUNTY AVERAGE VALUE
Top 10 in NC, Strongest	Unemployment Rate (Q4)	3.1%	3.9%
2nd Strongest	Population 25+ with at least a Bachelor's Degree	28.75%	24.4%
Weakest	Percentage of Population without Health Insurance	11.25%	11.23%

Education: 60.56

This component evaluates the quality of educational institutions and the educational attainment levels of the local population, which play a crucial role in developing a skilled and adaptable workforce. Haywood County's performance on this dimension is fairly strong when compared to other North Carolina counties, ranking 19th in the state.

Notable variables for Haywood County within this dimension include:

VARIABLE STRENGTH	FACTOR	HAYWOOD COUNTY VALUE	NC COUNTY AVERAGE VALUE
Top 10 in NC, Strongest	3rd Grade Reading Proficiency	56.5%	43.1%
2nd Strongest	Local LEA Financial Resources (per ADM)	\$11,465	\$8,683
Weakest	Dropout Rate	1.63%	1.65%

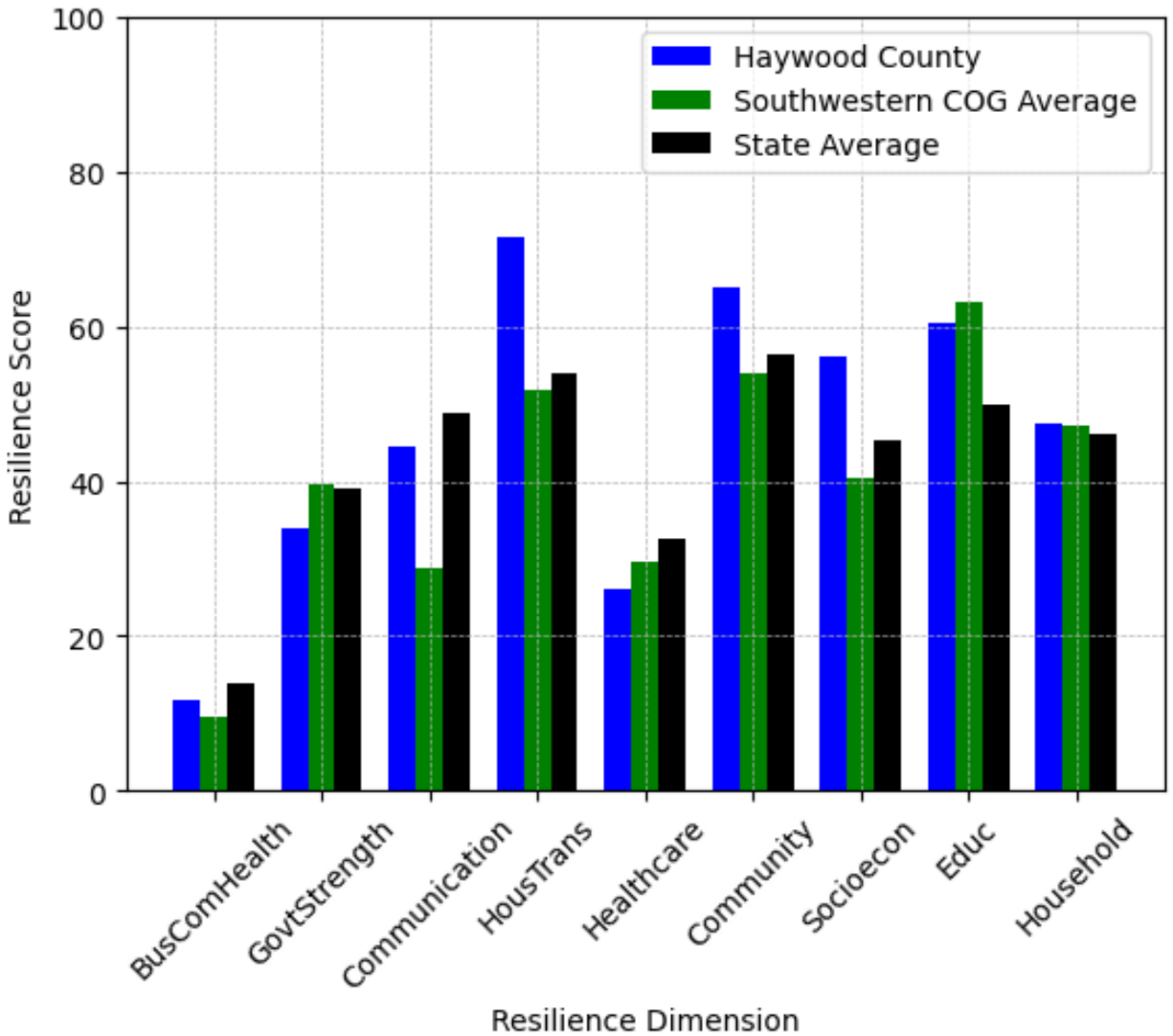
Household Characteristics: 47.33

This component examines factors such as the proportion of single-parent households, age distribution, and the proportion of individuals with disabilities, as these elements can influence a community's resilience and ability to recover from economic disruptions. Haywood County's performance on this dimension is average when compared to other North Carolina counties, ranking 41st in the state.

Notable variables for Haywood County within this dimension include:

VARIABLE STRENGTH	FACTOR	HAYWOOD COUNTY VALUE	NC COUNTY AVERAGE VALUE
Strongest	Percentage of Population 17 and Younger	17.86%	20.37%
2nd Strongest	Percentage of Population with Limited English Proficiency	0.533%	1.454%
Weakest	Percentage of Population 65 and Older	25.07%	20.53%

Haywood County's Resilience Dimension Scores Over Time As Compared to the Region and State Averages



Note: Resilience Scores are normalized from 1 to 100 with the most resilient county scoring 100. The Resilience Score is determined based on a county's performance relative to NC's other 99 counties.

Notable Trends in Resilience Indicators, 2017-2022

NOTE: The key trends in the this section are identified based on change rates of at least .15 standard deviations over at least 5 years. Variables are positively oriented such that a positive trend indicates improved performance (e.g., 'improvement' in property crime is a lower crime rate, while 'decline' in property crime indicates a higher crime rate).

Trends in the Business Community Health dimension:

Total Employment Level: **590** (5-year change rate = **3.4%**, from 17,372 to 17,962)

→ No change in rank

Average Weekly Wages: **209 dollars** (5-year change rate = **28.99%**, from 721 to 930)

↑ Change in rank from 47 to 45 in NC

Real GDP in Current Dollars: **125,587 dollars** (5-year change rate = **6.86%**, from 1,831,550 to 1,957,137)

↑ Change in rank from 49 to 46 in NC

Trends in the County Government Fiscal Strength dimension:

Adjusted Tax Base: **19,057 dollars** (5-year change rate = **16.2%**, from 117,651 to 136,708)

→ No change in rank

County Sales Tax: **8,052,626 dollars** (5-year change rate = **54.71%**, from 14,719,872 to 22,772,498)

↓ Change in rank from 37 to 38 in NC

Trends in the Housing & Transportation dimension:

Ratio of Average Estimated Home Value to Median Income : **1.9** (5-year change rate = **28.39%**, from 6.69 to 8.59)

↑ Change in rank from 56 to 53 in NC

Average Available Rent Money less the Average HUD Fair Market Rent: **339.1 dollars** (5-year change rate = **67.24%**, from 504.3 to 843.4)

↑ Change in rank from 54 to 43 in NC

Trends in the Healthcare dimension:

Opioid Deaths per 100,000 Residents: **13.8** (5-year change rate = **44.37%**, from 31.1 to 44.9)

↑ Change in rank from 73 to 71 in NC

Nurses per 10,000 Residents: **-22.98** (5-year change rate = **-15.52%**, from 148.03 to 125.05)

↓ Change in rank from 59 to 66 in NC

Mental Health Professionals per 10,000 Residents: **-0.33** (5-year change rate = **-4.23%**, from 7.8 to 7.47)

↓ Change in rank from 20 to 33 in NC

Trends in the Community Cohesion dimension:

Violent Crimes per 10,000 Residents: **-1.13** (4-year change rate = **-35.03%**, from 3.23 to 2.1)

↑ Change in rank from 71 to 39 in NC

Property Crimes per 10,000 Residents: **-8.53** (4-year change rate = **-31.26%**, from 27.28 to 18.75)

↑ Change in rank from 75 to 69 in NC

Nonprofits Organizations per 1,000 Residents: **0.69** (5-year change rate = **23.42%**, from 2.96 to 3.65)

↑ Change in rank from 44 to 36 in NC

Trends in the Socioeconomics dimension:

Unemployment Rate (Q4): **-0.5 percent** (5-year change rate = **-14.81%**, from 3.6 to 3.1)

↓ Change in rank from 8 to 10 in NC

Median Household Income: **20,300 dollars** (5-year change rate = **38.09%**, from 53,300 to 73,600)

↑ Change in rank from 45 to 34 in NC

Trends in the Education dimension:

Graduation Percentage: **6.7 percent** (5-year change rate = **7.95%**, from 84.3 to 91)

↑ Change in rank from 72 to 26 in NC

Dropout Rate: **-0.82 percent** (5-year change rate = **-33.56%**, from 2.46 to 1.63)

↑ Change in rank from 59 to 50 in NC

Student to Teacher Ratio: **-1** (4-year change rate = **-3.73%**, from 14 to 14)

↓ Change in rank from 33 to 37 in NC

3rd Grade Reading Proficiency: **-4.3 percent** (5-year change rate = **-7.07%**, from 60.8 to 56.5)

↑ Change in rank from 21 to 10 in NC

Data Advisements:

- Availability of Broadband Services is not available for 2022 and was excluded from calculating this county's dimension and resilience score.
- Adoption Rate of Broadband Services is not available for 2022 and was excluded from calculating this county's dimension and resilience score.