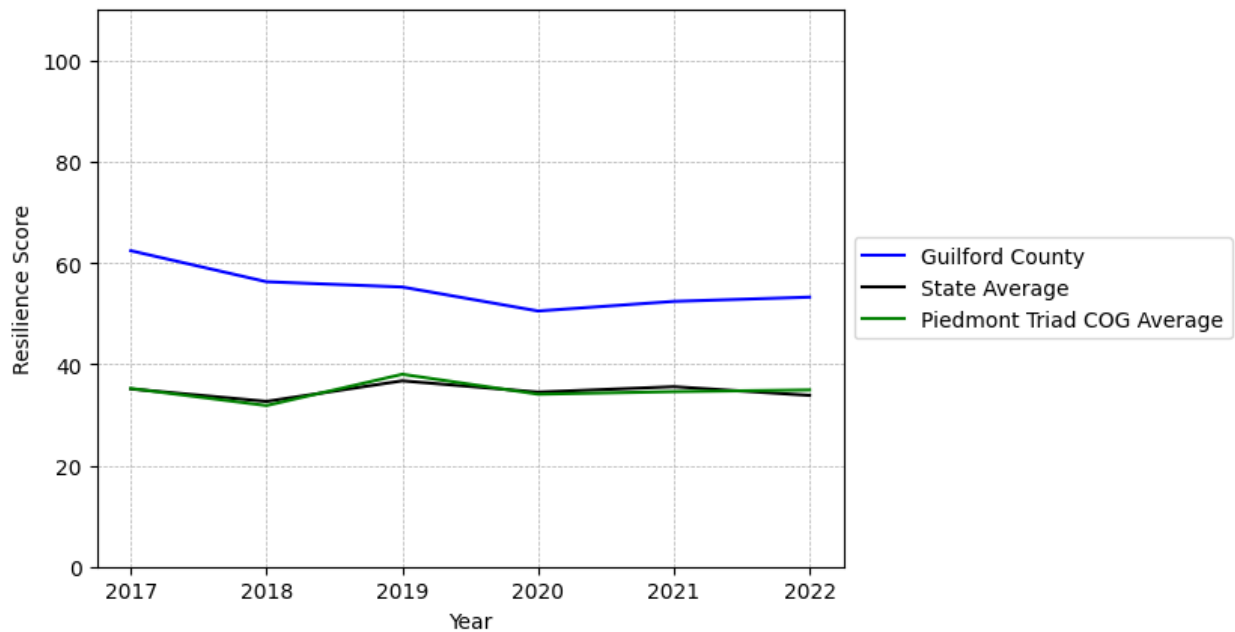


Guilford County Summary

Resilience Score: 53.24

In 2022, Guilford County achieved a Resilience Score of 53.24, which is strong as compared to the North Carolina State average.

**Guilford County's Resilience Score Over Time
As Compared to the Region and State Averages**



Note: Resilience Scores are normalized from 1 to 100 with the most resilient county scoring 100. The Resilience Score is determined based on a county's performance relative to NC's other 99 counties.

Guilford County's Resilience Score is comprised of 9 distinct dimensions of resilience. Below are Guilford County's scores for 2022 on those 9 dimensions, and their rank relative to other North Carolina counties.

Business Community Health: 40.38

This component examines the strength and diversity of the local business community, including factors such as the number of businesses, employment levels, and industry diversity. Guilford County's performance on this dimension is strong when compared to other North Carolina counties, ranking 5th in the state.

Notable variables for Guilford County within this dimension include:

VARIABLE STRENGTH	FACTOR	GUILFORD COUNTY VALUE	NC COUNTY AVERAGE VALUE
Top 10 in NC, Strongest	Total Employment Level	289,528	45,758
Top 10 in NC, 2nd Strongest	Real GDP in Current Dollars	\$34,424,943	\$6,092,555
Top 10 in NC	Science, Engineering, & Technology Industries Employment Percentage	4.95%	1.79%
Top 10 in NC	Average Weekly Wages	\$1,127	\$951
Bottom 10 in NC, Weakest	Private Sector Diversity	0.043	0.28

County Government Fiscal Strength: 33.75

This component looks at the financial health of local governments, including their ability to generate revenue, manage debt, and maintain adequate reserves to weather economic downturns. Guilford County's performance on this dimension is average when compared to other North Carolina counties, ranking 69th in the state.

Notable variables for Guilford County within this dimension include:

VARIABLE STRENGTH	FACTOR	GUILFORD COUNTY VALUE	NC COUNTY AVERAGE VALUE
Top 10 in NC, Strongest	County Sales Tax	\$135,400,848	\$31,151,902
2nd Strongest	Dependency Ratio of County Government	0.12	0.16
Bottom 10 in NC, Weakest	Debt Service Ratio of County Government	0.15	0.07

Communication: 87.75

This component assesses the availability and quality of communication infrastructure, such as broadband internet access, which is crucial for businesses and residents to stay connected and resilient during disruptions. Guilford County's performance on this dimension is strong when compared to other North Carolina counties, ranking 4th in the state.

Notable variables for Guilford County within this dimension include:

VARIABLE STRENGTH	FACTOR	GUILFORD COUNTY VALUE	NC COUNTY AVERAGE VALUE
Top 10 in NC, Strongest	Local High-Speed Mobile Data Availability	0.98	0.66
Top 10 in NC, 2nd Strongest	In-Vehicle High-Speed Mobile Data Availability	0.86	0.37
Weakest	Percentage of Population without Smartphones	12.83%	17.22%

Housing & Transportation: 65.69

This component evaluates the accessibility and affordability of housing, as well as the availability of reliable transportation options, which are essential for a resilient workforce and economy. Guilford County's performance on this dimension is average when compared to other North Carolina counties, ranking 41st in the state.

Notable variables for Guilford County within this dimension include:

VARIABLE STRENGTH	FACTOR	GUILFORD COUNTY VALUE	NC COUNTY AVERAGE VALUE
Top 10 in NC, Strongest	Ratio of Average Estimated Home Value to Median Income	1.01	13.67
Top 10 in NC, 2nd Strongest	Percentage of People with Commute Times Over 45 Minutes	8%	16.69%
Weakest	Percentage of Households with More Residents than Rooms	2.69%	2.1%

Healthcare: 45.2

The healthcare component examines the availability and quality of healthcare facilities, services, and professionals, which are critical for maintaining a healthy and productive workforce. Guilford County's performance on this dimension is strong when compared to other North Carolina counties, ranking 10th in the state.

Notable variables for Guilford County within this dimension include:

VARIABLE STRENGTH	FACTOR	GUILFORD COUNTY VALUE	NC COUNTY AVERAGE VALUE
Top 10 in NC, Strongest	Nurses per 10,000	1,120.91	262.64

	Residents		
2nd Strongest	Physicians per 10,000 Residents	25.98	16.05
Weakest	Opioid Deaths per 100,000 Residents	37.4	38.73

Community Cohesion: 43.96

This component looks at the strength of social networks, community engagement, and the ability of residents to work together to address challenges and support one another during times of adversity. Guilford County's performance on this dimension is fairly weak when compared to other North Carolina counties, ranking 80th in the state.

Notable variables for Guilford County within this dimension include:

VARIABLE STRENGTH	FACTOR	GUILFORD COUNTY VALUE	NC COUNTY AVERAGE VALUE
Top 10 in NC, Strongest	Nonprofits Organizations per 1,000 Residents	5.05	3.17
2nd Strongest	Yearly Population Change Percentage	0.577%	0.906%
Weakest	Property Crimes per 10,000 Residents	28.74	15.74

Socioeconomics: 52.8

This component considers factors such as income levels, poverty rates, and inequality, which can impact a community's ability to withstand and recover from economic shocks. Guilford County's performance on this dimension is average when compared to other North Carolina counties, ranking 34th in the state.

Notable variables for Guilford County within this dimension include:

VARIABLE STRENGTH	FACTOR	GUILFORD COUNTY VALUE	NC COUNTY AVERAGE VALUE
Strongest	Population 25+ with at least a Bachelor's Degree	37.92%	24.4%
2nd Strongest	Percentage of Households with Income over \$200k	7.79%	5.28%
Weakest	Gini Coefficient (Income Inequality)	0.49	0.46

Education: 57.97

This component evaluates the quality of educational institutions and the educational attainment levels of the local population, which play a crucial role in developing a skilled and adaptable workforce. Guilford County's performance on this dimension is fairly strong when compared to other North Carolina counties, ranking 23rd in the state.

Notable variables for Guilford County within this dimension include:

VARIABLE STRENGTH	FACTOR	GUILFORD COUNTY VALUE	NC COUNTY AVERAGE VALUE
Top 10 in NC, Strongest	Postsecondary Enrollment Percentage	41.8%	25.48%
2nd Strongest	Graduation Percentage	92.3%	88.03%
Weakest	Dropout Rate	1.72%	1.65%

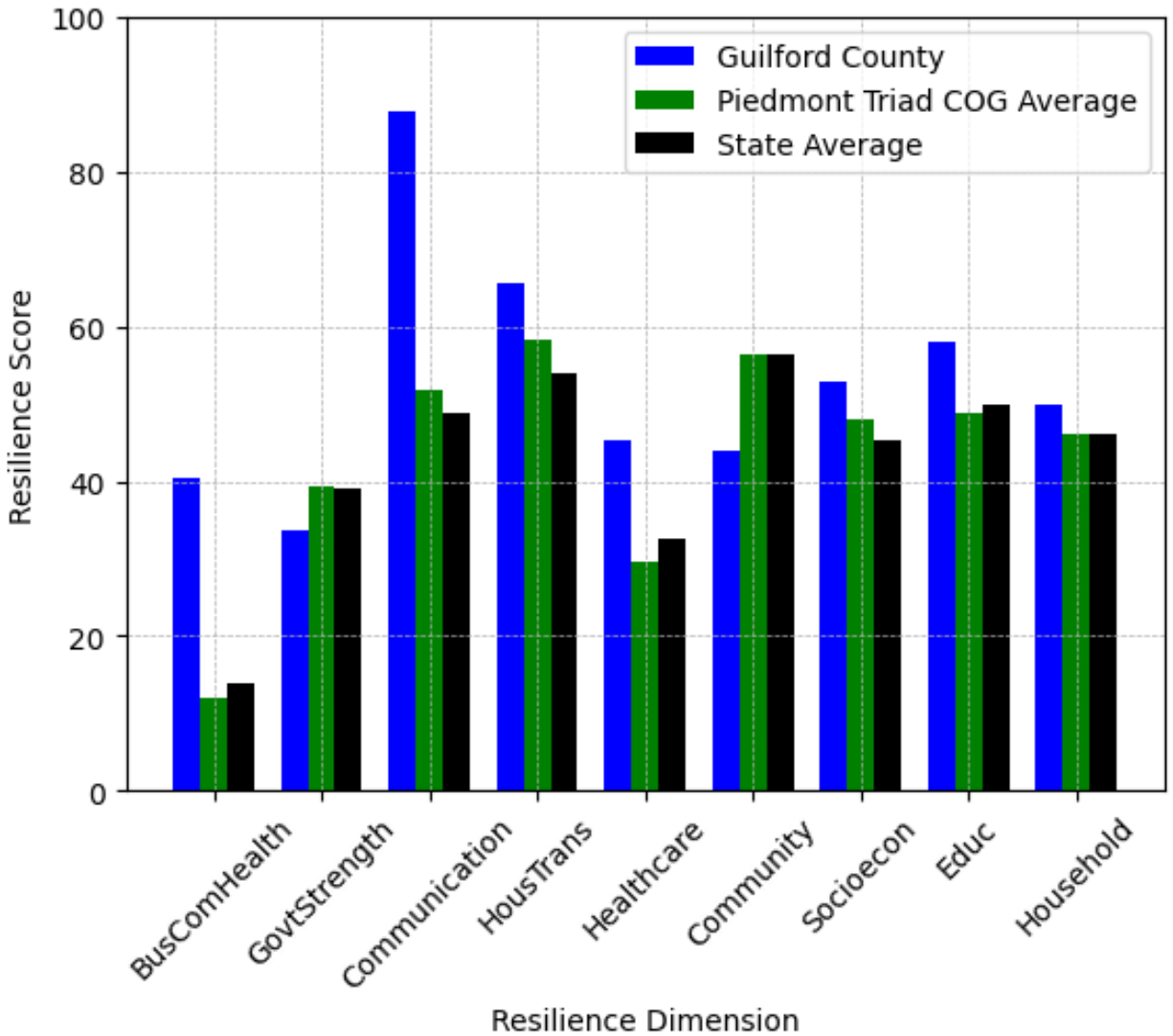
Household Characteristics: 49.8

This component examines factors such as the proportion of single-parent households, age distribution, and the proportion of individuals with disabilities, as these elements can influence a community's resilience and ability to recover from economic disruptions. Guilford County's performance on this dimension is average when compared to other North Carolina counties, ranking 31st in the state.

Notable variables for Guilford County within this dimension include:

VARIABLE STRENGTH	FACTOR	GUILFORD COUNTY VALUE	NC COUNTY AVERAGE VALUE
Strongest	Percentage of Population with a Disability	11.877%	16.566%
2nd Strongest	Percentage of Population 65 and Older	15.53%	20.53%
Weakest	Percentage of Population with Limited English Proficiency	2.337%	1.454%

Guilford County's Resilience Dimension Scores Over Time As Compared to the Region and State Averages



Note: Resilience Scores are normalized from 1 to 100 with the most resilient county scoring 100. The Resilience Score is determined based on a county's performance relative to NC's other 99 counties.

Notable Trends in Resilience Indicators, 2017-2022

NOTE: The key trends in the this section are identified based on change rates of at least .15 standard deviations over at least 5 years. Variables are positively oriented such that a positive trend indicates improved performance (e.g., 'improvement' in property crime is a lower crime rate, while 'decline' in property crime indicates a higher crime rate).

Trends in the Business Community Health dimension:

Total Employment Level: **6,884** (5-year change rate = **2.44%**, from 282,643 to 289,528)

→ No change in rank

Average Weekly Wages: **181 dollars** (5-year change rate = **19.13%**, from 946 to 1,127)

↓ Change in rank from 6 to 8 in NC

Real GDP in Current Dollars: **617,353 dollars** (5-year change rate = **1.83%**, from 33,807,590 to 34,424,943)

↓ Change in rank from 3 to 4 in NC

Trends in the County Government Fiscal Strength dimension:

Adjusted Tax Base: **10,884 dollars** (5-year change rate = **11.97%**, from 90,957 to 101,841)

↓ Change in rank from 49 to 51 in NC

County Sales Tax: **37,163,456 dollars** (5-year change rate = **37.83%**, from 98,237,392 to 135,400,848)

→ No change in rank

Trends in the Housing & Transportation dimension:

Ratio of Average Estimated Home Value to Median Income : **0.22** (5-year change rate = **27.16%**, from 0.8 to 1.01)

→ No change in rank

Average Available Rent Money less the Average HUD Fair Market Rent: **191.8 dollars** (5-year change rate = **33.06%**, from 580.2 to 772)

↓ Change in rank from 32 to 52 in NC

Trends in the Healthcare dimension:

Opioid Deaths per 100,000 Residents: **14.1** (5-year change rate = **60.52%**, from 23.3 to 37.4)

↓ Change in rank from 51 to 54 in NC

Nurses per 10,000 Residents: **90.47** (5-year change rate = **8.78%**, from 1,030.44 to 1,120.91)

→ No change in rank

Physicians per 10,000 Residents: **1.66** (5-year change rate = **6.83%**, from 24.32 to 25.98)

→ No change in rank

Mental Health Professionals per 10,000 Residents: **0.33** (5-year change rate = **4.96%**, from 6.65 to 6.98)

→ No change in rank

Trends in the Community Cohesion dimension:

Violent Crimes per 10,000 Residents: **1.04** (4-year change rate = **20.07%**, from 5.16 to 6.2)

→ No change in rank

Property Crimes per 10,000 Residents: **0.68** (4-year change rate = **2.43%**, from 28.06 to 28.74)

↓ Change in rank from 78 to 90 in NC

Nonprofits Organizations per 1,000 Residents: **0.49** (5-year change rate = **10.72%**, from 4.56 to 5.05)

↑ Change in rank from 14 to 9 in NC

Trends in the Socioeconomics dimension:

Unemployment Rate (Q4): **-0.5 percent** (5-year change rate = **-10.61%**, from 4.4 to 3.9)

↓ Change in rank from 57 to 65 in NC

Median Household Income: **15,800 dollars** (5-year change rate = **27.62%**, from 57,200 to 73,000)

↓ Change in rank from 26 to 37 in NC

Trends in the Education dimension:

Graduation Percentage: **1.5 percent** (5-year change rate = **1.65%**, from 90.8 to 92.3)

↑ Change in rank from 27 to 15 in NC

Dropout Rate: **-0.15 percent** (5-year change rate = **-7.81%**, from 1.87 to 1.72)

↓ Change in rank from 37 to 56 in NC

Student to Teacher Ratio: **-1** (4-year change rate = **-7.91%**, from 15 to 14)

↑ Change in rank from 63 to 45 in NC

3rd Grade Reading Proficiency: **-6.3 percent** (5-year change rate = **-12.26%**, from 51.4 to 45.1)

↑ Change in rank from 63 to 43 in NC

Data Advisements:

- Availability of Broadband Services is not available for 2022 and was excluded from calculating this county's dimension and resilience score.
- Adoption Rate of Broadband Services is not available for 2022 and was excluded from calculating this county's dimension and resilience score.