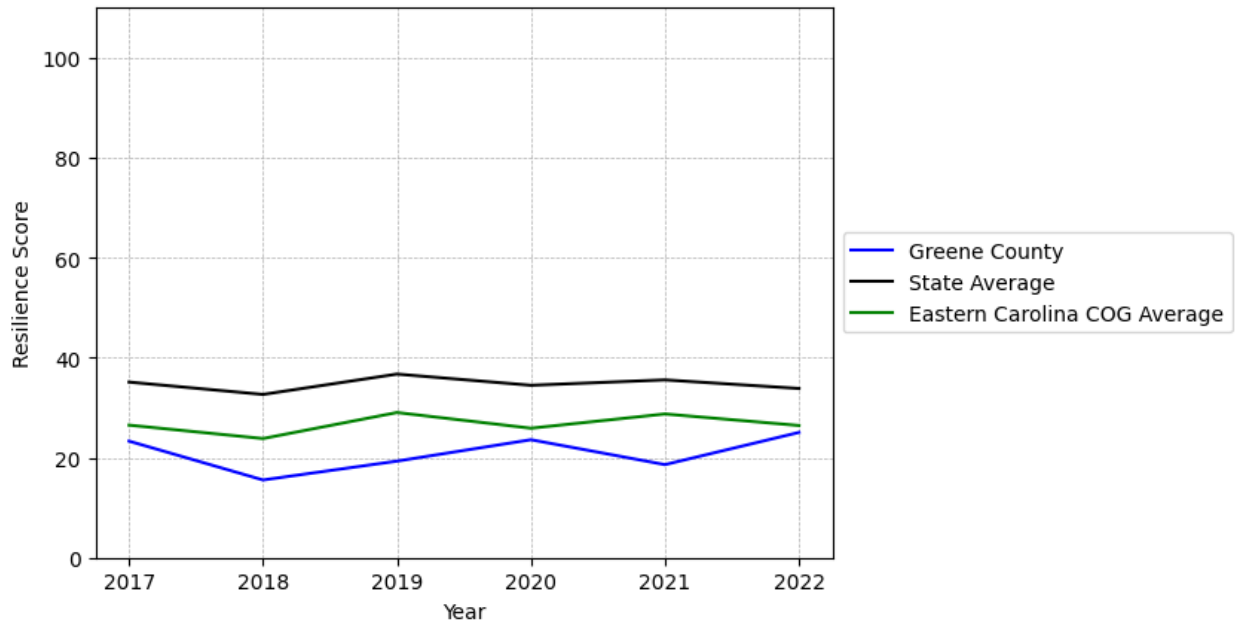


Greene County Summary

Resilience Score: 25.05

In 2022, Greene County achieved a Resilience Score of 25.05, which is average as compared to the North Carolina State average.

**Greene County's Resilience Score Over Time
As Compared to the Region and State Averages**



Note: Resilience Scores are normalized from 1 to 100 with the most resilient county scoring 100. The Resilience Score is determined based on a county's performance relative to NC's other 99 counties.

Greene County's Resilience Score is comprised of 9 distinct dimensions of resilience. Below are Greene County's scores for 2022 on those 9 dimensions, and their rank relative to other North Carolina counties.

Business Community Health: 14.72

This component examines the strength and diversity of the local business community, including factors such as the number of businesses, employment levels, and industry diversity. Greene County's performance on this dimension is average when compared to other North Carolina counties, ranking 28th in the state.

Notable variables for Greene County within this dimension include:

VARIABLE STRENGTH	FACTOR	GREENE COUNTY VALUE	NC COUNTY AVERAGE VALUE
Strongest	Ratio of Available Child Care Slots to Number of Children under Five	0.79	0.59
2nd Strongest	Private Sector Diversity	0.471	0.28
Weakest	Real GDP in Current Dollars	\$420,317	\$6,092,555

County Government Fiscal Strength: 79.13

This component looks at the financial health of local governments, including their ability to generate revenue, manage debt, and maintain adequate reserves to weather economic downturns. Greene County's performance on this dimension is strong when compared to other North Carolina counties, ranking 7th in the state.

Notable variables for Greene County within this dimension include:

VARIABLE STRENGTH	FACTOR	GREENE COUNTY VALUE	NC COUNTY AVERAGE VALUE
Top 10 in NC, Strongest	Operations Ratio of County Government	1.32	1.11
Top 10 in NC, 2nd Strongest	Solvency Ratio of County Government	79.63	46.7
Top 10 in NC	Capital Assets Condition Ratio of County Government	0.66	0.51
Top 10 in NC	Quick Ratio of County Government	27.18	16.4
Bottom 10 in NC, Weakest	Adjusted Tax Base	\$63,555	\$124,092

Communication: 55.48

This component assesses the availability and quality of communication infrastructure, such as broadband internet access, which is crucial for businesses and residents to stay connected and resilient during disruptions. Greene County's performance on this dimension is average when compared to other North Carolina counties, ranking 39th in the state.

Notable variables for Greene County within this dimension include:

VARIABLE STRENGTH	FACTOR	GREENE COUNTY VALUE	NC COUNTY AVERAGE VALUE
Strongest	Local High-Speed Mobile Data Availability	0.86	0.66
2nd Strongest	In-Vehicle High-Speed Mobile Data Availability	0.53	0.37
Weakest	Broadband Availability	0.45	0.6

Housing & Transportation: 40.48

This component evaluates the accessibility and affordability of housing, as well as the availability of reliable transportation options, which are essential for a resilient workforce and economy. Greene County's performance on this dimension is fairly weak when compared to other North Carolina counties, ranking 82nd in the state.

Notable variables for Greene County within this dimension include:

VARIABLE STRENGTH	FACTOR	GREENE COUNTY VALUE	NC COUNTY AVERAGE VALUE
Strongest	Percentage of People with Commute Times Over 45 Minutes	14.18%	16.69%
2nd Strongest	Percentage of Homes Built Before 1980	41.84%	40.9%
Bottom 10 in NC	Percentage of People Driving Alone to Work	89.42%	86.36%
Bottom 10 in NC, Weakest	Percentage of Households with More Residents than Rooms	4%	2.1%

Healthcare: 31.79

The healthcare component examines the availability and quality of healthcare facilities, services, and professionals, which are critical for maintaining a healthy and productive workforce. Greene

County's performance on this dimension is average when compared to other North Carolina counties, ranking 32nd in the state.

Notable variables for Greene County within this dimension include:

VARIABLE STRENGTH	FACTOR	GREENE COUNTY VALUE	NC COUNTY AVERAGE VALUE
Strongest	Mental Health Professionals per 10,000 Residents	9.94	6.6
2nd Strongest	Opioid Deaths per 100,000 Residents	23.7	38.73
Bottom 10 in NC, Weakest	Physicians per 10,000 Residents	3.48	16.05

Community Cohesion: 52.24

This component looks at the strength of social networks, community engagement, and the ability of residents to work together to address challenges and support one another during times of adversity. Greene County's performance on this dimension is average when compared to other North Carolina counties, ranking 67th in the state.

Notable variables for Greene County within this dimension include:

VARIABLE STRENGTH	FACTOR	GREENE COUNTY VALUE	NC COUNTY AVERAGE VALUE
Strongest	Percentage of Inactive Voters	9.28%	11.3%
2nd Strongest	Property Crimes per 10,000 Residents	13.88	15.74
Bottom 10 in NC, Weakest	Nonprofits Organizations per 1,000 Residents	0.73	3.17

Socioeconomics: 20.55

This component considers factors such as income levels, poverty rates, and inequality, which can impact a community's ability to withstand and recover from economic shocks. Greene County's performance on this dimension is weak when compared to other North Carolina counties, ranking 85th in the state.

Notable variables for Greene County within this dimension include:

VARIABLE	FACTOR	GREENE COUNTY	NC COUNTY
----------	--------	---------------	-----------

STRENGTH		VALUE	AVERAGE VALUE
Top 10 in NC, Strongest	Unemployment Rate (Q4)	2.9%	3.9%
Top 10 in NC, 2nd Strongest	Gini Coefficient (Income Inequality)	0.4	0.46
Bottom 10 in NC	Percentage of Population without Health Insurance	16.88%	11.23%
Bottom 10 in NC	Population 25+ with at least a Bachelor's Degree	11.46%	24.4%
Bottom 10 in NC	Percentage of Households with Income over \$200k	1.24%	5.28%
Bottom 10 in NC, Weakest	Percentage of Population without a High School Diploma	17.12%	9.05%

Education: 33.73

This component evaluates the quality of educational institutions and the educational attainment levels of the local population, which play a crucial role in developing a skilled and adaptable workforce. Greene County's performance on this dimension is fairly weak when compared to other North Carolina counties, ranking 75th in the state.

Notable variables for Greene County within this dimension include:

VARIABLE STRENGTH	FACTOR	GREENE COUNTY VALUE	NC COUNTY AVERAGE VALUE
Top 10 in NC, Strongest	Graduation Percentage	94.5%	88.03%
2nd Strongest	Student to Teacher Ratio	14	14
Bottom 10 in NC	3rd Grade Reading Proficiency	26.5%	43.1%
Bottom 10 in NC	Postsecondary Enrollment Percentage	13.05%	25.48%
Bottom 10 in NC, Weakest	Local LEA Financial Resources (per ADM)	\$2,657	\$8,683

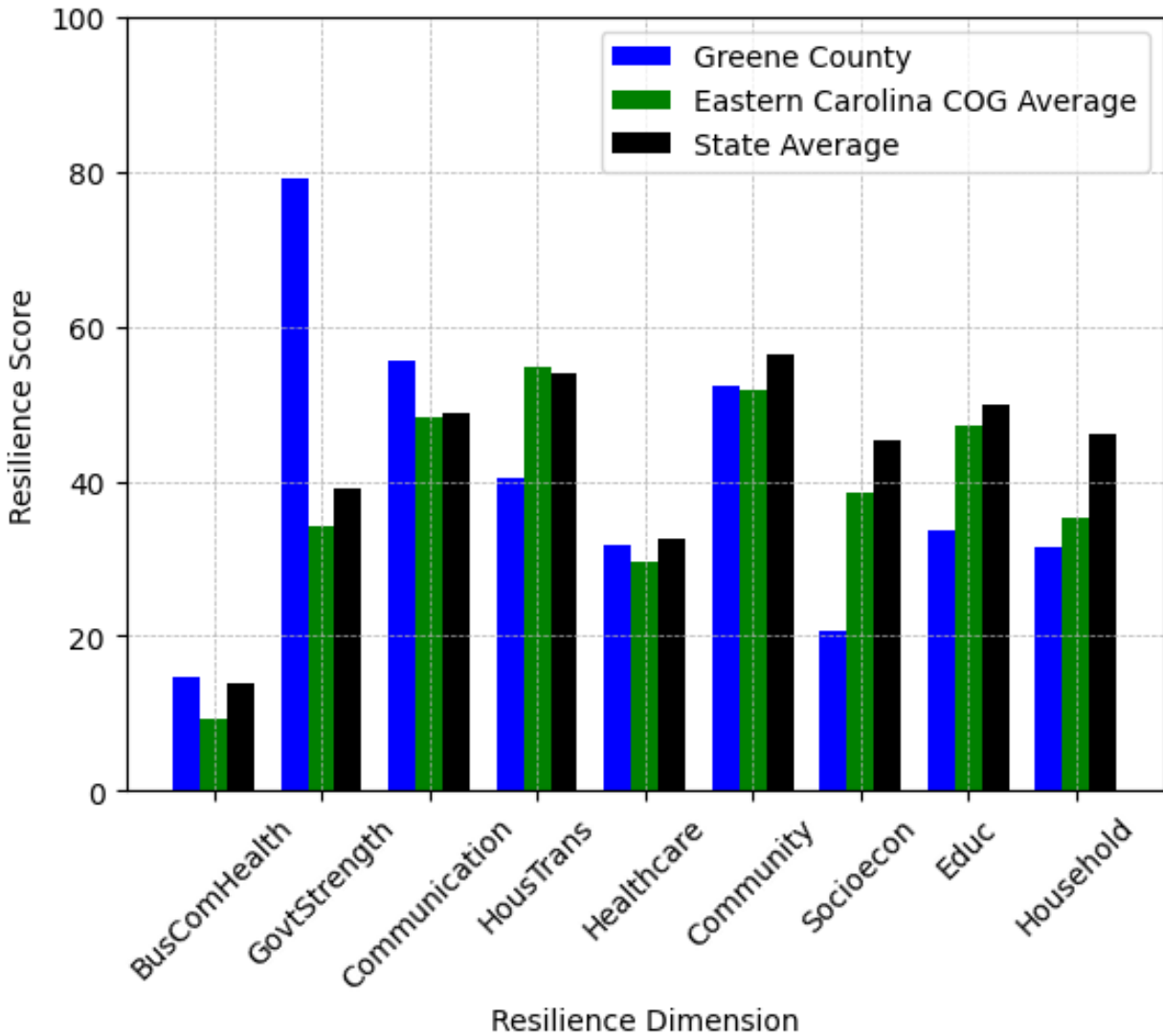
Household Characteristics: 31.57

This component examines factors such as the proportion of single-parent households, age distribution, and the proportion of individuals with disabilities, as these elements can influence a community's resilience and ability to recover from economic disruptions. Greene County's performance on this dimension is fairly weak when compared to other North Carolina counties, ranking 86th in the state.

Notable variables for Greene County within this dimension include:

VARIABLE STRENGTH	FACTOR	GREENE COUNTY VALUE	NC COUNTY AVERAGE VALUE
Strongest	Percentage of Population 65 and Older	16.54%	20.53%
2nd Strongest	Percentage of Population 17 and Younger	19.06%	20.37%
Bottom 10 in NC, Weakest	Percentage of Population with Limited English Proficiency	2.999%	1.454%

Greene County's Resilience Dimension Scores Over Time As Compared to the Region and State Averages



Note: Resilience Scores are normalized from 1 to 100 with the most resilient county scoring 100. The Resilience Score is determined based on a county's performance relative to NC's other 99 counties.

Notable Trends in Resilience Indicators, 2017-2022

NOTE: The key trends in the this section are identified based on change rates of at least .15 standard deviations over at least 5 years. Variables are positively oriented such that a positive trend indicates improved performance (e.g., 'improvement' in property crime is a lower crime rate, while 'decline' in property crime indicates a higher crime rate).

Trends in the Business Community Health dimension:

Total Employment Level: **281** (5-year change rate = **6.54%**, from 4,294 to 4,575)

→ No change in rank

Average Weekly Wages: **169 dollars** (5-year change rate = **24.28%**, from 696 to 865)

↓ Change in rank from 63 to 75 in NC

Real GDP in Current Dollars: **-22,730 dollars** (5-year change rate = **-5.13%**, from 443,047 to 420,317)

↓ Change in rank from 85 to 86 in NC

Trends in the County Government Fiscal Strength dimension:

Adjusted Tax Base: **8,529 dollars** (5-year change rate = **15.5%**, from 55,026 to 63,555)

↓ Change in rank from 97 to 99 in NC

County Sales Tax: **1,398,406 dollars** (5-year change rate = **53.42%**, from 2,617,791 to 4,016,197)

→ No change in rank

Trends in the Housing & Transportation dimension:

Ratio of Average Estimated Home Value to Median Income : **4.28** (5-year change rate = **36.7%**, from 11.66 to 15.94)

↓ Change in rank from 76 to 77 in NC

Average Available Rent Money less the Average HUD Fair Market Rent: **91.3 dollars** (5-year change rate = **14.58%**, from 626.4 to 717.7)

↓ Change in rank from 25 to 59 in NC

Trends in the Healthcare dimension:

Opioid Deaths per 100,000 Residents: **14.2** (5-year change rate = **149.47%**, from 9.5 to 23.7)

↓ Change in rank from 9 to 18 in NC

Nurses per 10,000 Residents: **-21.89** (5-year change rate = **-18.86%**, from 116.07 to 94.18)

↓ Change in rank from 68 to 73 in NC

Physicians per 10,000 Residents: **-1.32** (5-year change rate = **-27.5%**, from 4.8 to 3.48)

↓ Change in rank from 85 to 92 in NC

Mental Health Professionals per 10,000 Residents: **0.82** (5-year change rate = **8.99%**, from 9.12 to 9.94)

→ No change in rank

Trends in the Community Cohesion dimension:

Property Crimes per 10,000 Residents: **-4.51** (4-year change rate = **-24.5%**, from 18.39 to 13.88)

↑ Change in rank from 49 to 43 in NC

Nonprofits Organizations per 1,000 Residents: **-1.79** (5-year change rate = **-70.95%**, from 2.53 to 0.73)

↓ Change in rank from 60 to 97 in NC

Trends in the Socioeconomics dimension:

Unemployment Rate (Q4): **-1.1 percent** (5-year change rate = **-27.87%**, from 4.1 to 2.9)

↑ Change in rank from 41 to 2 in NC

Median Household Income: **9,700 dollars** (5-year change rate = **18.87%**, from 51,400 to 61,100)

↓ Change in rank from 54 to 66 in NC

Trends in the Education dimension:

Graduation Percentage: **0.9 percent** (5-year change rate = **0.96%**, from 93.6 to 94.5)

↑ Change in rank from 5 to 4 in NC

Dropout Rate: **1.65 percent** (5-year change rate = **202.91%**, from 0.81 to 2.46)

↓ Change in rank from 5 to 83 in NC

Student to Teacher Ratio: **-1** (4-year change rate = **-5.48%**, from 15 to 14)

↑ Change in rank from 42 to 38 in NC

3rd Grade Reading Proficiency: **-21.5 percent** (5-year change rate = **-44.79%**, from 48 to 26.5)

↓ Change in rank from 78 to 95 in NC

Data Advisements:

- Availability of Broadband Services is not available for 2022 and was excluded from calculating this county's dimension and resilience score.
- Adoption Rate of Broadband Services is not available for 2022 and was excluded from calculating this county's dimension and resilience score.