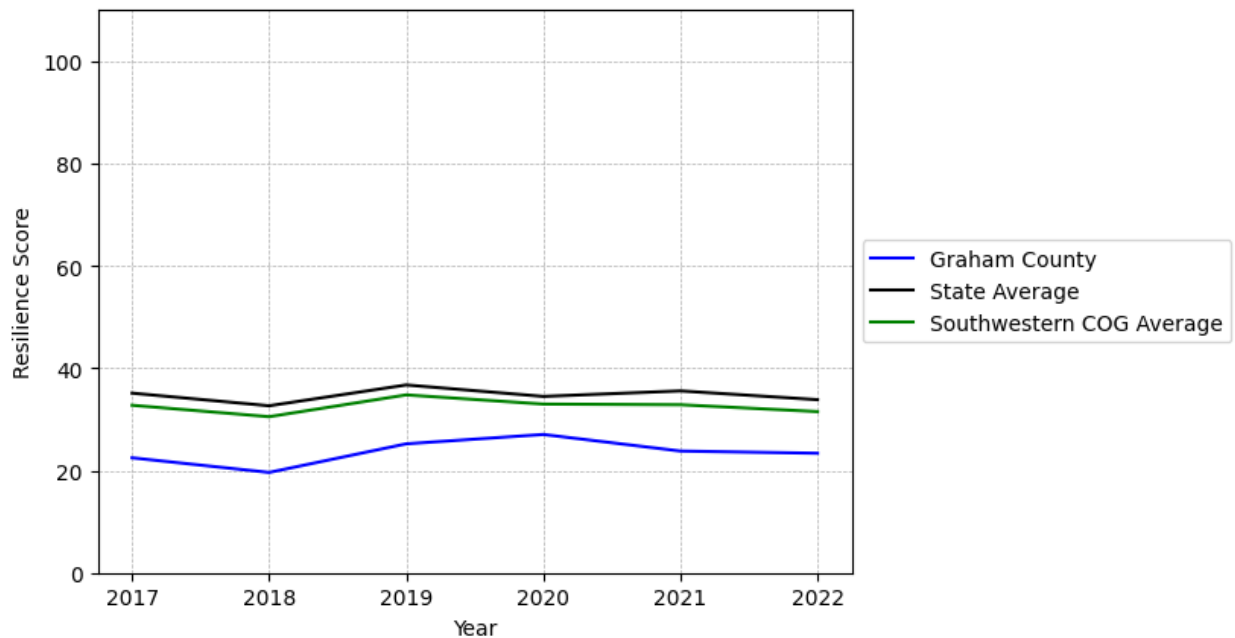


Graham County Summary

Resilience Score: 23.37

In 2022, Graham County achieved a Resilience Score of 23.37, which is fairly weak as compared to the North Carolina State average.

**Graham County's Resilience Score Over Time
As Compared to the Region and State Averages**



Note: Resilience Scores are normalized from 1 to 100 with the most resilient county scoring 100. The Resilience Score is determined based on a county's performance relative to NC's other 99 counties.

Graham County's Resilience Score is comprised of 9 distinct dimensions of resilience. Below are Graham County's scores for 2022 on those 9 dimensions, and their rank relative to other North Carolina counties.

Business Community Health: 12.46

This component examines the strength and diversity of the local business community, including factors such as the number of businesses, employment levels, and industry diversity. Graham County's performance on this dimension is average when compared to other North Carolina counties, ranking 45th in the state.

Notable variables for Graham County within this dimension include:

VARIABLE STRENGTH	FACTOR	GRAHAM COUNTY VALUE	NC COUNTY AVERAGE VALUE
Top 10 in NC, Strongest	Private Sector Diversity	0.548	0.28
2nd Strongest	Percentage of Companies in Science, Engineering, & Technology Industries	5.74%	6.13%
Bottom 10 in NC	Real GDP in Current Dollars	\$228,935	\$6,092,555
Bottom 10 in NC, Weakest	Total Employment Level	1,823	45,758

County Government Fiscal Strength: 28.48

This component looks at the financial health of local governments, including their ability to generate revenue, manage debt, and maintain adequate reserves to weather economic downturns. Graham County's performance on this dimension is fairly weak when compared to other North Carolina counties, ranking 75th in the state.

Notable variables for Graham County within this dimension include:

VARIABLE STRENGTH	FACTOR	GRAHAM COUNTY VALUE	NC COUNTY AVERAGE VALUE
Strongest	Adjusted Tax Base	\$146,42	\$124,092
2nd Strongest	Debt Service Ratio of County Government	0.06	0.07
Bottom 10 in NC, Weakest	County Sales Tax	\$2,864,044	\$31,151,902

Communication: 3.48

This component assesses the availability and quality of communication infrastructure, such as broadband internet access, which is crucial for businesses and residents to stay connected and resilient during disruptions. Graham County's performance on this dimension is weak when compared to other North Carolina counties, ranking 99th in the state.

Notable variables for Graham County within this dimension include:

VARIABLE STRENGTH	FACTOR	GRAHAM COUNTY VALUE	NC COUNTY AVERAGE VALUE
Bottom 10 in NC, Strongest	Broadband Availability	0.27	0.6
Bottom 10 in NC, 2nd Strongest	Local High-Speed Mobile Data Availability	0.23	0.66
Bottom 10 in NC	Percentage of Population without Smartphones	29.13%	17.22%
Bottom 10 in NC, Weakest	In-Vehicle High-Speed Mobile Data Availability	0.05	0.37

Housing & Transportation: 45.02

This component evaluates the accessibility and affordability of housing, as well as the availability of reliable transportation options, which are essential for a resilient workforce and economy. Graham County's performance on this dimension is fairly weak when compared to other North Carolina counties, ranking 79th in the state.

Notable variables for Graham County within this dimension include:

VARIABLE STRENGTH	FACTOR	GRAHAM COUNTY VALUE	NC COUNTY AVERAGE VALUE
Top 10 in NC, Strongest	Percentage of Households with More Residents than Rooms	0.94%	2.1%
2nd Strongest	Percentage of People Driving Alone to Work	84.58%	86.36%
Bottom 10 in NC, Weakest	Ratio of Average Estimated Home Value to Median Income	42.15	13.67

Healthcare: 30.23

The healthcare component examines the availability and quality of healthcare facilities, services, and professionals, which are critical for maintaining a healthy and productive workforce. Graham County's performance on this dimension is average when compared to other North Carolina counties, ranking 36th in the state.

Notable variables for Graham County within this dimension include:

VARIABLE STRENGTH	FACTOR	GRAHAM COUNTY VALUE	NC COUNTY AVERAGE VALUE
-------------------	--------	---------------------	-------------------------

Top 10 in NC, Strongest	Nursing Home Beds per 1,000 Residents of Age 65+	39.31	27.53
2nd Strongest	Opioid Deaths per 100,000 Residents	23.7	38.73
Bottom 10 in NC, Weakest	Nurses per 10,000 Residents	50.47	262.64

Community Cohesion: 56.83

This component looks at the strength of social networks, community engagement, and the ability of residents to work together to address challenges and support one another during times of adversity. Graham County's performance on this dimension is average when compared to other North Carolina counties, ranking 51st in the state.

Notable variables for Graham County within this dimension include:

VARIABLE STRENGTH	FACTOR	GRAHAM COUNTY VALUE	NC COUNTY AVERAGE VALUE
Strongest	Nonprofits Organizations per 1,000 Residents	4.81	3.17
2nd Strongest	Percentage of Inactive Voters	9.26%	11.3%
Bottom 10 in NC, Weakest	Yearly Population Change Percentage	-1.071%	0.906%

Socioeconomics: 27.49

This component considers factors such as income levels, poverty rates, and inequality, which can impact a community's ability to withstand and recover from economic shocks. Graham County's performance on this dimension is fairly weak when compared to other North Carolina counties, ranking 79th in the state.

Notable variables for Graham County within this dimension include:

VARIABLE STRENGTH	FACTOR	GRAHAM COUNTY VALUE	NC COUNTY AVERAGE VALUE
Strongest	Percentage of Households Spending more than 30% Income on Housing	18.97%	24.53%
2nd Strongest	Gini Coefficient (Income Inequality)	0.43	0.46
Bottom 10 in NC	Population 25+ with at least a Bachelor's Degree	13.82%	24.4%

Bottom 10 in NC	Percentage of Households with Income over \$200k	1.64%	5.28%
Bottom 10 in NC, Weakest	Percentage of Population without Health Insurance	17.69%	11.23%

Education: 61.02

This component evaluates the quality of educational institutions and the educational attainment levels of the local population, which play a crucial role in developing a skilled and adaptable workforce. Graham County's performance on this dimension is fairly strong when compared to other North Carolina counties, ranking 17th in the state.

Notable variables for Graham County within this dimension include:

VARIABLE STRENGTH	FACTOR	GRAHAM COUNTY VALUE	NC COUNTY AVERAGE VALUE
Top 10 in NC, Strongest	Dropout Rate	0%	1.65%
Top 10 in NC, 2nd Strongest	Student to Teacher Ratio	12	14
Weakest	Postsecondary Enrollment Percentage	17.97%	25.48%

Household Characteristics: 39.2

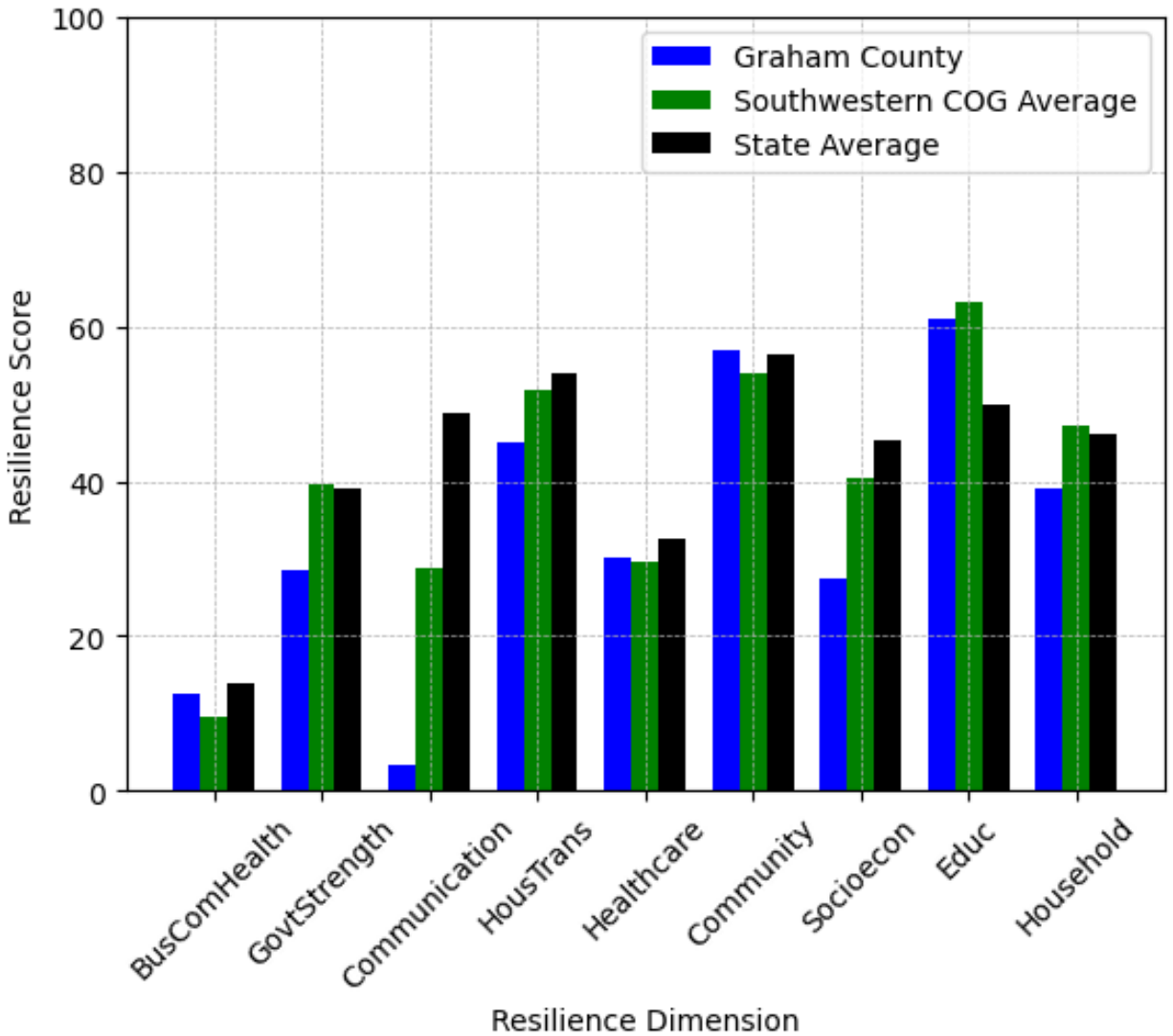
This component examines factors such as the proportion of single-parent households, age distribution, and the proportion of individuals with disabilities, as these elements can influence a community's resilience and ability to recover from economic disruptions. Graham County's performance on this dimension is average when compared to other North Carolina counties, ranking 72nd in the state.

Notable variables for Graham County within this dimension include:

VARIABLE STRENGTH	FACTOR	GRAHAM COUNTY VALUE	NC COUNTY AVERAGE VALUE
Strongest	Percentage of Single Parent Households	31.719%	36.132%
2nd Strongest	Percentage of Population with Limited English Proficiency	0.957%	1.454%
Weakest	Percentage of Population with a Disability	19.571%	16.566%



Graham County's Resilience Dimension Scores Over Time As Compared to the Region and State Averages



Note: Resilience Scores are normalized from 1 to 100 with the most resilient county scoring 100. The Resilience Score is determined based on a county's performance relative to NC's other 99 counties.

Notable Trends in Resilience Indicators, 2017-2022

NOTE: The key trends in the this section are identified based on change rates of at least .15 standard deviations over at least 5 years. Variables are positively oriented such that a positive trend indicates improved performance (e.g., 'improvement' in property crime is a lower crime rate, while 'decline' in property crime indicates a higher crime rate).

Trends in the Business Community Health dimension:

Total Employment Level: **-126** (5-year change rate = **-6.46%**, from 1,949 to 1,823)

→ No change in rank

Average Weekly Wages: **250 dollars** (5-year change rate = **36.5%**, from 685 to 935)

↑ Change in rank from 74 to 44 in NC

Real GDP in Current Dollars: **3,834 dollars** (5-year change rate = **1.7%**, from 225,101 to 228,935)

↑ Change in rank from 95 to 94 in NC

Trends in the County Government Fiscal Strength dimension:

Adjusted Tax Base: **2,780 dollars** (5-year change rate = **1.94%**, from 143,640 to 146,420)

↓ Change in rank from 14 to 21 in NC

County Sales Tax: **1,168,978 dollars** (5-year change rate = **68.96%**, from 1,695,066 to 2,864,044)

↑ Change in rank from 95 to 93 in NC

Trends in the Housing & Transportation dimension:

Ratio of Average Estimated Home Value to Median Income : **4.37** (5-year change rate = **11.56%**, from 37.78 to 42.15)

↑ Change in rank from 97 to 96 in NC

Average Available Rent Money less the Average HUD Fair Market Rent: **205.3 dollars** (5-year change rate = **51.27%**, from 400.4 to 605.7)

↑ Change in rank from 79 to 74 in NC

Trends in the Healthcare dimension:

Opioid Deaths per 100,000 Residents: **12** (5-year change rate = **102.56%**, from 11.7 to 23.7)

↓ Change in rank from 13 to 19 in NC

Nurses per 10,000 Residents: **-2.13** (5-year change rate = **-4.05%**, from 52.6 to 50.47)

→ No change in rank

Mental Health Professionals per 10,000 Residents: **1.32** (5-year change rate = **36.16%**, from 3.65 to 4.97)

↑ Change in rank from 77 to 57 in NC

Trends in the Socioeconomics dimension:

Unemployment Rate (Q4): **-1.7 percent** (5-year change rate = **-25.25%**, from 6.6 to 4.9)

↑ Change in rank from 94 to 89 in NC

Median Household Income: **10,700 dollars** (5-year change rate = **24.1%**, from 44,400 to 55,100)

↓ Change in rank from 86 to 87 in NC

Trends in the Education dimension:

Graduation Percentage: **6.1 percent** (5-year change rate = **7.09%**, from 86 to 92.1)

↑ Change in rank from 59 to 17 in NC

Dropout Rate: **-1.56 percent** (5-year change rate = **-100%**, from 1.56 to 0)

↑ Change in rank from 24 to 2 in NC

3rd Grade Reading Proficiency: **-21.8 percent** (5-year change rate = **-37.39%**, from 58.3 to 36.5)

↓ Change in rank from 31 to 74 in NC

Data Advisements:

- This county has a population under 20,000 residents according to the US Census Bureau; in low population areas, some variable estimates can be less stable and more sensitive to changes.
- Availability of Broadband Services is not available for 2022 and was excluded from calculating this county's dimension and resilience score.
- Adoption Rate of Broadband Services is not available for 2022 and was excluded from calculating this county's dimension and resilience score.