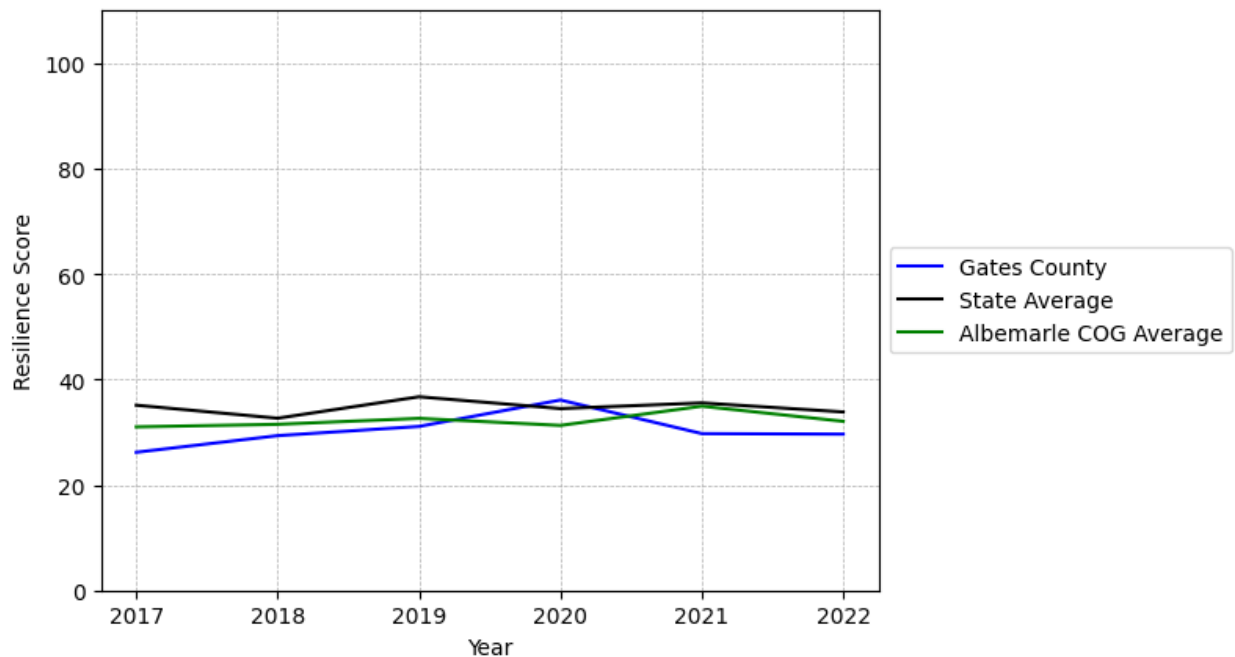


Gates County Summary

Resilience Score: 29.63

In 2022, Gates County achieved a Resilience Score of 29.63, which is average as compared to the North Carolina State average.

**Gates County's Resilience Score Over Time
As Compared to the Region and State Averages**



Note: Resilience Scores are normalized from 1 to 100 with the most resilient county scoring 100. The Resilience Score is determined based on a county's performance relative to NC's other 99 counties.

Gates County's Resilience Score is comprised of 9 distinct dimensions of resilience. Below are Gates County's scores for 2022 on those 9 dimensions, and their rank relative to other North Carolina counties.

Business Community Health: 12.77

This component examines the strength and diversity of the local business community, including factors such as the number of businesses, employment levels, and industry diversity. Gates County's performance on this dimension is average when compared to other North Carolina counties, ranking 41st in the state.

Notable variables for Gates County within this dimension include:

VARIABLE STRENGTH	FACTOR	GATES COUNTY VALUE	NC COUNTY AVERAGE VALUE
Top 10 in NC, Strongest 2nd Strongest	Private Sector Diversity	0.654	0.28
	Average Weekly Wages	\$948	\$951
Bottom 10 in NC	Science, Engineering, & Technology Industries Employment Percentage	0.06%	1.79%
Bottom 10 in NC	Real GDP in Current Dollars	\$184,446	\$6,092,555
Bottom 10 in NC, Weakest	Total Employment Level	1,443	45,758

County Government Fiscal Strength: 42.22

This component looks at the financial health of local governments, including their ability to generate revenue, manage debt, and maintain adequate reserves to weather economic downturns. Gates County's performance on this dimension is average when compared to other North Carolina counties, ranking 52nd in the state.

Notable variables for Gates County within this dimension include:

VARIABLE STRENGTH	FACTOR	GATES COUNTY VALUE	NC COUNTY AVERAGE VALUE
Strongest	Operations Ratio of County Government	1.19	1.11
2nd Strongest	Solvency Ratio of County Government	53.16	46.7
Bottom 10 in NC, Weakest	County Sales Tax	\$2,260,434	\$31,151,902

Communication: 37.85

This component assesses the availability and quality of communication infrastructure, such as broadband internet access, which is crucial for businesses and residents to stay connected and

resilient during disruptions. Gates County's performance on this dimension is fairly weak when compared to other North Carolina counties, ranking 76th in the state.

Notable variables for Gates County within this dimension include:

VARIABLE STRENGTH	FACTOR	GATES COUNTY VALUE	NC COUNTY AVERAGE VALUE
Strongest	Percentage of Population without Smartphones	17.13%	17.22%
2nd Strongest	Local High-Speed Mobile Data Availability	0.6	0.66
Weakest	Broadband Availability	0.42	0.6

Housing & Transportation: 49.87

This component evaluates the accessibility and affordability of housing, as well as the availability of reliable transportation options, which are essential for a resilient workforce and economy. Gates County's performance on this dimension is average when compared to other North Carolina counties, ranking 68th in the state.

Notable variables for Gates County within this dimension include:

VARIABLE STRENGTH	FACTOR	GATES COUNTY VALUE	NC COUNTY AVERAGE VALUE
Top 10 in NC, Strongest	Percentage of Households with More Residents than Rooms	0.92%	2.1%
Top 10 in NC, 2nd Strongest	Percentage of Owner-Occupied Homes	68.5%	57.87%
Bottom 10 in NC	Ratio of Average Estimated Home Value to Median Income	36.92	13.67
Bottom 10 in NC	Percentage of People Driving Alone to Work	89.92%	86.36%
Bottom 10 in NC, Weakest	Percentage of People with Commute Times Over 45 Minutes	37.36%	16.69%

Healthcare: 19.38

The healthcare component examines the availability and quality of healthcare facilities, services, and professionals, which are critical for maintaining a healthy and productive workforce. Gates County's performance on this dimension is fairly weak when compared to other North Carolina counties, ranking 71st in the state.

Notable variables for Gates County within this dimension include:

VARIABLE STRENGTH	FACTOR	GATES COUNTY VALUE	NC COUNTY AVERAGE VALUE
Strongest	Nursing Home Beds per 1,000 Residents of Age 65+	30.2	27.53
2nd Strongest	Opioid Deaths per 100,000 Residents	34.6	38.73
Bottom 10 in NC	Nurses per 10,000 Residents	39.15	262.64
Bottom 10 in NC, Weakest	Physicians per 10,000 Residents	0	16.05

Community Cohesion: 66.81

This component looks at the strength of social networks, community engagement, and the ability of residents to work together to address challenges and support one another during times of adversity. Gates County's performance on this dimension is fairly strong when compared to other North Carolina counties, ranking 27th in the state.

Notable variables for Gates County within this dimension include:

VARIABLE STRENGTH	FACTOR	GATES COUNTY VALUE	NC COUNTY AVERAGE VALUE
Top 10 in NC, Strongest	Violent Crimes per 10,000 Residents	0.96	3.07
2nd Strongest	Property Crimes per 10,000 Residents	7.77	15.74
Weakest	Percentage of Inactive Voters	12.63%	11.3%

Socioeconomics: 56

This component considers factors such as income levels, poverty rates, and inequality, which can impact a community's ability to withstand and recover from economic shocks. Gates County's performance on this dimension is fairly strong when compared to other North Carolina counties, ranking 28th in the state.

Notable variables for Gates County within this dimension include:

VARIABLE STRENGTH	FACTOR	GATES COUNTY VALUE	NC COUNTY AVERAGE VALUE
Top 10 in NC, Strongest	Gini Coefficient (Income	0.4	0.46

	Inequality)		
Top 10 in NC, 2nd Strongest	Percentage of Population without Health Insurance	7.44%	11.23%
Bottom 10 in NC	Percentage of Households with Income over \$200k	1.64%	5.28%
Bottom 10 in NC, Weakest	Population 25+ with at least a Bachelor's Degree	8.9%	24.4%

Education: 43.19

This component evaluates the quality of educational institutions and the educational attainment levels of the local population, which play a crucial role in developing a skilled and adaptable workforce. Gates County's performance on this dimension is average when compared to other North Carolina counties, ranking 57th in the state.

Notable variables for Gates County within this dimension include:

VARIABLE STRENGTH	FACTOR	GATES COUNTY VALUE	NC COUNTY AVERAGE VALUE
Top 10 in NC, Strongest	Teacher Attrition Rate	0.06	0.12
Top 10 in NC, 2nd Strongest	Student to Teacher Ratio	11	14
Bottom 10 in NC, Weakest	Postsecondary Enrollment Percentage	13.75%	25.48%

Household Characteristics: 40.87

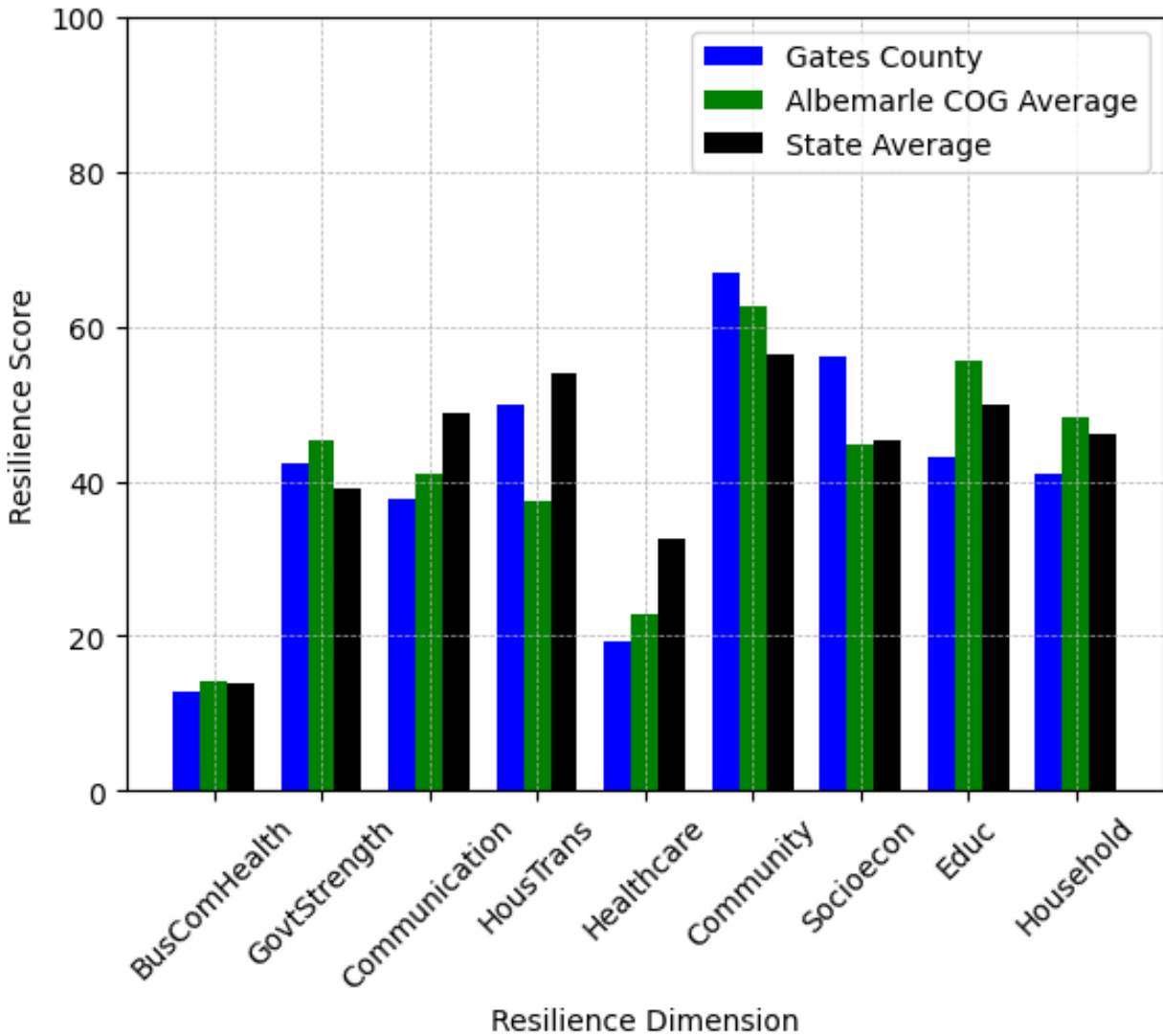
This component examines factors such as the proportion of single-parent households, age distribution, and the proportion of individuals with disabilities, as these elements can influence a community's resilience and ability to recover from economic disruptions. Gates County's performance on this dimension is average when compared to other North Carolina counties, ranking 65th in the state.

Notable variables for Gates County within this dimension include:

VARIABLE STRENGTH	FACTOR	GATES COUNTY VALUE	NC COUNTY AVERAGE VALUE
Strongest	Percentage of Population 17 and Younger	19.61%	20.37%
2nd Strongest	Percentage of Population with Limited English Proficiency	1.009%	1.454%
Weakest	Percentage of Population with a Disability	19.149%	16.566%



Gates County's Resilience Dimension Scores Over Time As Compared to the Region and State Averages



Note: Resilience Scores are normalized from 1 to 100 with the most resilient county scoring 100. The Resilience Score is determined based on a county's performance relative to NC's other 99 counties.

Notable Trends in Resilience Indicators, 2017-2022

NOTE: The key trends in the this section are identified based on change rates of at least .15 standard deviations over at least 5 years. Variables are positively oriented such that a positive trend indicates improved performance (e.g., 'improvement' in property crime is a lower crime rate, while 'decline' in property crime indicates a higher crime rate).

Trends in the Business Community Health dimension:

Total Employment Level: **-5** (5-year change rate = **-0.37%**, from 1,448 to 1,443)

→ No change in rank

Average Weekly Wages: **264 dollars** (5-year change rate = **38.6%**, from 684 to 948)

↑ Change in rank from 76 to 39 in NC

Real GDP in Current Dollars: **-14,363 dollars** (5-year change rate = **-7.22%**, from 198,809 to 184,446)

→ No change in rank

Trends in the County Government Fiscal Strength dimension:

Adjusted Tax Base: **22,619 dollars** (5-year change rate = **32.78%**, from 69,004 to 91,623)

↑ Change in rank from 81 to 63 in NC

County Sales Tax: **717,934 dollars** (5-year change rate = **46.54%**, from 1,542,500 to 2,260,434)

↓ Change in rank from 96 to 97 in NC

Trends in the Housing & Transportation dimension:

Ratio of Average Estimated Home Value to Median Income : **4.82** (5-year change rate = **15.01%**, from 32.1 to 36.92)

↑ Change in rank from 96 to 93 in NC

Average Available Rent Money less the Average HUD Fair Market Rent: **139.6 dollars** (5-year change rate = **20.9%**, from 667.9 to 807.5)

↓ Change in rank from 20 to 45 in NC

Trends in the Healthcare dimension:

Nurses per 10,000 Residents: **-5.5** (5-year change rate = **-12.32%**, from 44.65 to 39.15)

↓ Change in rank from 95 to 97 in NC

Mental Health Professionals per 10,000 Residents: **2.06** (5-year change rate = **113.19%**, from 1.82 to 3.88)

↑ Change in rank from 96 to 79 in NC

Trends in the Community Cohesion dimension:

Violent Crimes per 10,000 Residents: **0.96** (4-year change rate = **N/A**, from 0 to 0.96)

↓ Change in rank from 1 to 10 in NC

Property Crimes per 10,000 Residents: **7.77** (4-year change rate = **N/A**, from 0 to 7.77)

↓ Change in rank from 1 to 12 in NC

Nonprofits Organizations per 1,000 Residents: **0.74** (5-year change rate = **24.12%**, from 3.08 to 3.83)

↑ Change in rank from 38 to 30 in NC

Trends in the Socioeconomics dimension:

Unemployment Rate (Q4): **-0.5 percent** (5-year change rate = **-12.4%**, from 4 to 3.5)

↓ Change in rank from 38 to 49 in NC

Median Household Income: **11,400 dollars** (5-year change rate = **20.11%**, from 56,700 to 68,100)

↓ Change in rank from 34 to 51 in NC

Trends in the Education dimension:

Graduation Percentage: **2.2 percent** (5-year change rate = **2.53%**, from 87.1 to 89.3)

↑ Change in rank from 50 to 38 in NC

Dropout Rate: **1.82 percent** (5-year change rate = **189.6%**, from 0.96 to 2.77)

↓ Change in rank from 7 to 90 in NC

Student to Teacher Ratio: **-2** (4-year change rate = **-14.34%**, from 13 to 11)

↑ Change in rank from 15 to 4 in NC

3rd Grade Reading Proficiency: **-12.3 percent** (5-year change rate = **-28.94%**, from 42.5 to 30.2)

↑ Change in rank from 90 to 89 in NC

Postsecondary Enrollment Percentage: **-0.16 percent** (5-year change rate = **-53.3%**, from 0.29 to 0.14)

↓ Change in rank from 19 to 95 in NC

Data Advisements:

- This county has a population under 20,000 residents according to the US Census Bureau; in low population areas, some variable estimates can be less stable and more sensitive to changes.
- Availability of Broadband Services is not available for 2022 and was excluded from calculating this county's dimension and resilience score.
- Adoption Rate of Broadband Services is not available for 2022 and was excluded from calculating this county's dimension and resilience score.