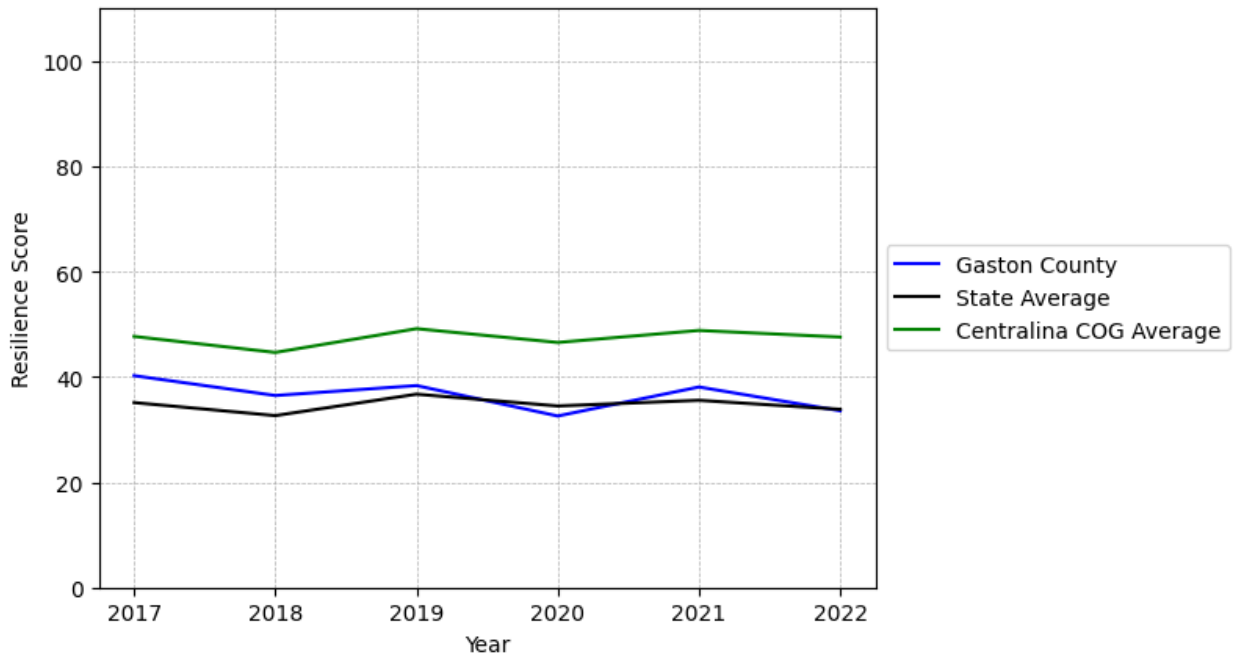


Gaston County Summary

Resilience Score: 33.57

In 2022, Gaston County achieved a Resilience Score of 33.57, which is average as compared to the North Carolina State average.

**Gaston County's Resilience Score Over Time
As Compared to the Region and State Averages**



Note: Resilience Scores are normalized from 1 to 100 with the most resilient county scoring 100. The Resilience Score is determined based on a county's performance relative to NC's other 99 counties.

Gaston County's Resilience Score is comprised of 9 distinct dimensions of resilience. Below are Gaston County's scores for 2022 on those 9 dimensions, and their rank relative to other North Carolina counties.

Business Community Health: 10.09

This component examines the strength and diversity of the local business community, including factors such as the number of businesses, employment levels, and industry diversity. Gaston County's performance on this dimension is average when compared to other North Carolina counties, ranking 57th in the state.

Notable variables for Gaston County within this dimension include:

VARIABLE STRENGTH	FACTOR	GASTON COUNTY VALUE	NC COUNTY AVERAGE VALUE
Strongest	Total Employment Level	77,172	45,758
2nd Strongest	Real GDP in Current Dollars	\$8,021,211	\$6,092,555
Weakest	Private Sector Diversity	0.107	0.28

County Government Fiscal Strength: 9.05

This component looks at the financial health of local governments, including their ability to generate revenue, manage debt, and maintain adequate reserves to weather economic downturns. Gaston County's performance on this dimension is weak when compared to other North Carolina counties, ranking 95th in the state.

Notable variables for Gaston County within this dimension include:

VARIABLE STRENGTH	FACTOR	GASTON COUNTY VALUE	NC COUNTY AVERAGE VALUE
Top 10 in NC, Strongest	Debt Service Ratio of County Government	0	0.07
Top 10 in NC, 2nd Strongest	County Sales Tax	\$68,129,28	\$31,151,902
Bottom 10 in NC	Dependency Ratio of County Government	0.38	0.16
Bottom 10 in NC, Weakest	Quick Ratio of County Government	1.73	16.4

Communication: 85.24

This component assesses the availability and quality of communication infrastructure, such as broadband internet access, which is crucial for businesses and residents to stay connected and resilient during disruptions. Gaston County's performance on this dimension is strong when compared to other North Carolina counties, ranking 7th in the state.

Notable variables for Gaston County within this dimension include:

VARIABLE STRENGTH	FACTOR	GASTON COUNTY VALUE	NC COUNTY AVERAGE VALUE
Top 10 in NC, Strongest	In-Vehicle High-Speed Mobile Data Availability	0.86	0.37
Top 10 in NC, 2nd Strongest	Local High-Speed Mobile Data Availability	0.98	0.66
Weakest	Percentage of Population without Smartphones	13.21%	17.22%

Housing & Transportation: 68.5

This component evaluates the accessibility and affordability of housing, as well as the availability of reliable transportation options, which are essential for a resilient workforce and economy. Gaston County's performance on this dimension is average when compared to other North Carolina counties, ranking 37th in the state.

Notable variables for Gaston County within this dimension include:

VARIABLE STRENGTH	FACTOR	GASTON COUNTY VALUE	NC COUNTY AVERAGE VALUE
Top 10 in NC, Strongest	Ratio of Average Estimated Home Value to Median Income	2.29	13.67
Top 10 in NC, 2nd Strongest	Average Available Rent Money less the Average HUD Fair Market Rent	\$1,086.7	\$799.87
Weakest	Percentage of Homes Built Before 1980	48.9%	40.9%

Healthcare: 23.64

The healthcare component examines the availability and quality of healthcare facilities, services, and professionals, which are critical for maintaining a healthy and productive workforce. Gaston County's performance on this dimension is average when compared to other North Carolina counties, ranking 63rd in the state.

Notable variables for Gaston County within this dimension include:

VARIABLE STRENGTH	FACTOR	GASTON COUNTY VALUE	NC COUNTY AVERAGE VALUE
Strongest	Nurses per 10,000 Residents	532.23	262.64

2nd Strongest	Physicians per 10,000 Residents	16.84	16.05
Weakest	Opioid Deaths per 100,000 Residents	61.9	38.73

Community Cohesion: 52.27

This component looks at the strength of social networks, community engagement, and the ability of residents to work together to address challenges and support one another during times of adversity. Gaston County's performance on this dimension is average when compared to other North Carolina counties, ranking 66th in the state.

Notable variables for Gaston County within this dimension include:

VARIABLE STRENGTH	FACTOR	GASTON COUNTY VALUE	NC COUNTY AVERAGE VALUE
Strongest	Yearly Population Change Percentage	1.778%	0.906%
2nd Strongest	Nonprofits Organizations per 1,000 Residents	3.18	3.17
Weakest	Property Crimes per 10,000 Residents	21.97	15.74

Socioeconomics: 55.94

This component considers factors such as income levels, poverty rates, and inequality, which can impact a community's ability to withstand and recover from economic shocks. Gaston County's performance on this dimension is fairly strong when compared to other North Carolina counties, ranking 30th in the state.

Notable variables for Gaston County within this dimension include:

VARIABLE STRENGTH	FACTOR	GASTON COUNTY VALUE	NC COUNTY AVERAGE VALUE
Top 10 in NC, Strongest	Median Household Income	\$96,3	\$70,088
2nd Strongest	Percentage of Households with Income over \$200k	5.75%	5.28%
Weakest	Percentage of Households Spending more than 30% Income on Housing	26.22%	24.53%

Education: 35.36

This component evaluates the quality of educational institutions and the educational attainment levels of the local population, which play a crucial role in developing a skilled and adaptable workforce. Gaston County's performance on this dimension is fairly weak when compared to other North Carolina counties, ranking 73rd in the state.

Notable variables for Gaston County within this dimension include:

VARIABLE STRENGTH	FACTOR	GASTON COUNTY VALUE	NC COUNTY AVERAGE VALUE
Strongest	Teacher Attrition Rate	0.1	0.12
2nd Strongest	Local LEA Financial Resources (per ADM)	\$6,405	\$8,683
Weakest	Student to Teacher Ratio	16	14

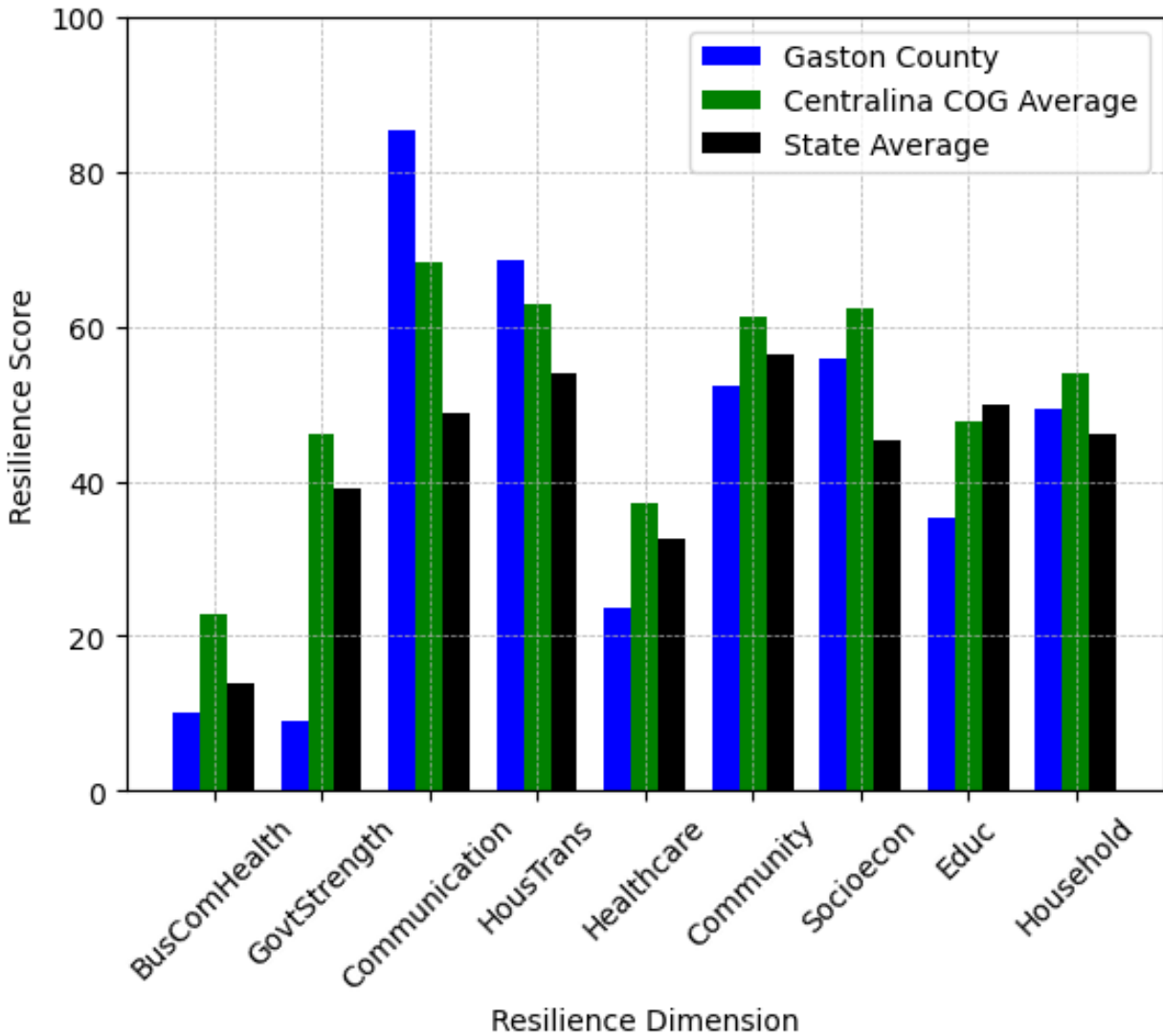
Household Characteristics: 49.43

This component examines factors such as the proportion of single-parent households, age distribution, and the proportion of individuals with disabilities, as these elements can influence a community's resilience and ability to recover from economic disruptions. Gaston County's performance on this dimension is average when compared to other North Carolina counties, ranking 33rd in the state.

Notable variables for Gaston County within this dimension include:

VARIABLE STRENGTH	FACTOR	GASTON COUNTY VALUE	NC COUNTY AVERAGE VALUE
Strongest	Percentage of Population 65 and Older	16.35%	20.53%
2nd Strongest	Percentage of Population with a Disability	14.728%	16.566%
Weakest	Percentage of Population 17 and Younger	22.33%	20.37%

Gaston County's Resilience Dimension Scores Over Time As Compared to the Region and State Averages



Note: Resilience Scores are normalized from 1 to 100 with the most resilient county scoring 100. The Resilience Score is determined based on a county's performance relative to NC's other 99 counties.

Notable Trends in Resilience Indicators, 2017-2022

NOTE: The key trends in the this section are identified based on change rates of at least .15 standard deviations over at least 5 years. Variables are positively oriented such that a positive trend indicates improved performance (e.g., 'improvement' in property crime is a lower crime rate, while 'decline' in property crime indicates a higher crime rate).

Trends in the Business Community Health dimension:

Total Employment Level: **3,612** (5-year change rate = **4.91%**, from 73,560 to 77,172)

↓ Change in rank from 12 to 13 in NC

Average Weekly Wages: **199 dollars** (5-year change rate = **24.97%**, from 797 to 996)

↓ Change in rank from 24 to 25 in NC

Real GDP in Current Dollars: **553,747 dollars** (5-year change rate = **7.42%**, from 7,467,464 to 8,021,211)

→ No change in rank

Trends in the County Government Fiscal Strength dimension:

Adjusted Tax Base: **20,678 dollars** (5-year change rate = **30.39%**, from 68,031 to 88,709)

↑ Change in rank from 85 to 71 in NC

County Sales Tax: **29,086,680 dollars** (5-year change rate = **74.5%**, from 39,042,600 to 68,129,280)

↑ Change in rank from 12 to 10 in NC

Trends in the Housing & Transportation dimension:

Ratio of Average Estimated Home Value to Median Income : **0.67** (5-year change rate = **41.11%**, from 1.62 to 2.29)

↑ Change in rank from 8 to 7 in NC

Average Available Rent Money less the Average HUD Fair Market Rent: **356 dollars** (5-year change rate = **48.72%**, from 730.7 to 1,086.7)

↑ Change in rank from 12 to 11 in NC

Trends in the Healthcare dimension:

Opioid Deaths per 100,000 Residents: **33.7** (5-year change rate = **119.5%**, from 28.2 to 61.9)

↓ Change in rank from 60 to 90 in NC

Nurses per 10,000 Residents: **34.29** (5-year change rate = **6.89%**, from 497.94 to 532.23)

→ No change in rank

Physicians per 10,000 Residents: **-1** (5-year change rate = **-5.61%**, from 17.84 to 16.84)

↓ Change in rank from 30 to 34 in NC

Mental Health Professionals per 10,000 Residents: **-0.39** (5-year change rate = **-5.78%**, from 6.75 to 6.36)

↓ Change in rank from 31 to 42 in NC

Trends in the Community Cohesion dimension:

Violent Crimes per 10,000 Residents: **0.32** (4-year change rate = **8.48%**, from 3.77 to 4.09)

→ No change in rank

Property Crimes per 10,000 Residents: **-6.23** (4-year change rate = **-22.08%**, from 28.19 to 21.97)

↓ Change in rank from 80 to 82 in NC

Nonprofits Organizations per 1,000 Residents: **0.37** (5-year change rate = **13.33%**, from 2.81 to 3.18)

↑ Change in rank from 50 to 49 in NC

Trends in the Socioeconomics dimension:

Unemployment Rate (Q4): **-0.8 percent** (5-year change rate = **-18.46%**, from 4.3 to 3.5)

↑ Change in rank from 52 to 48 in NC

Median Household Income: **25,600 dollars** (5-year change rate = **36.21%**, from 70,700 to 96,300)

↑ Change in rank from 12 to 7 in NC

Trends in the Education dimension:

Graduation Percentage: **-1.4 percent** (5-year change rate = **-1.57%**, from 89.2 to 87.8)

↓ Change in rank from 33 to 55 in NC

Student to Teacher Ratio: **-1** (4-year change rate = **-7.92%**, from 17 to 16)

↑ Change in rank from 93 to 84 in NC

3rd Grade Reading Proficiency: **-13.4 percent** (5-year change rate = **-25.87%**, from 51.8 to 38.4)

↓ Change in rank from 57 to 68 in NC

Data Advisements:

- Availability of Broadband Services is not available for 2022 and was excluded from calculating this county's dimension and resilience score.
- Adoption Rate of Broadband Services is not available for 2022 and was excluded from calculating this county's dimension and resilience score.