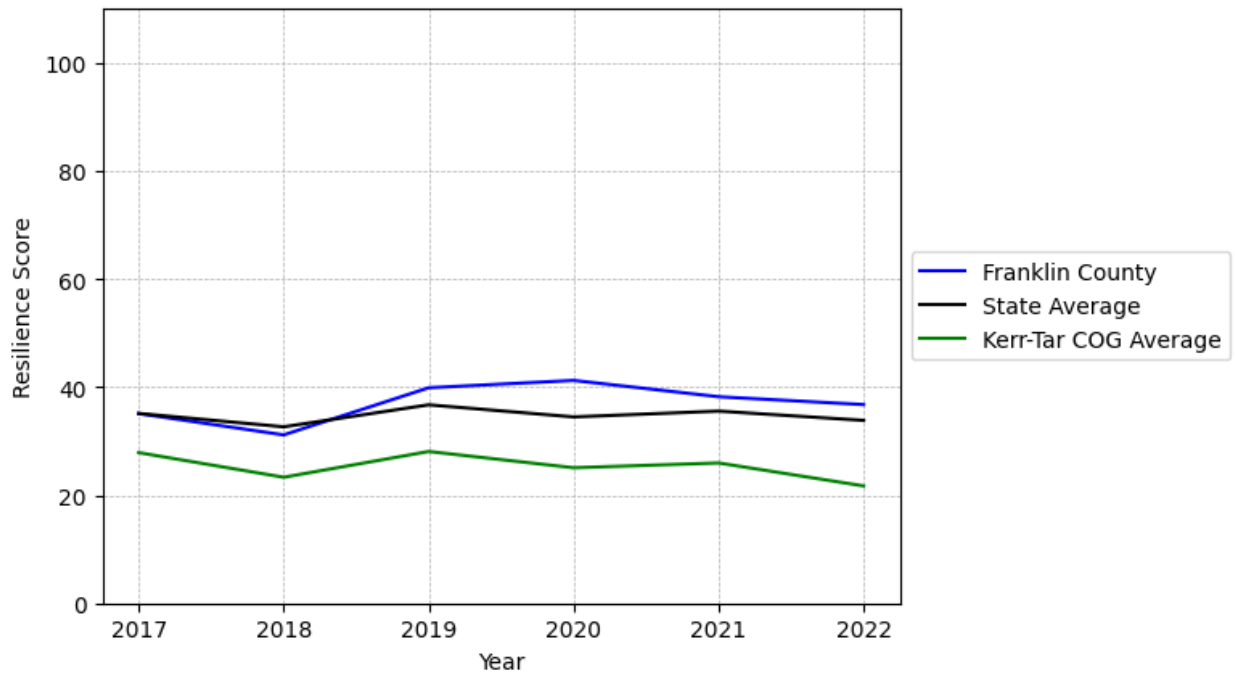


Franklin County Summary

Resilience Score: 36.76

In 2022, Franklin County achieved a Resilience Score of 36.76, which is average as compared to the North Carolina State average.

**Franklin County's Resilience Score Over Time
As Compared to the Region and State Averages**



Note: Resilience Scores are normalized from 1 to 100 with the most resilient county scoring 100. The Resilience Score is determined based on a county's performance relative to NC's other 99 counties.

Franklin County's Resilience Score is comprised of 9 distinct dimensions of resilience. Below are Franklin County's scores for 2022 on those 9 dimensions, and their rank relative to other North Carolina counties.

Business Community Health: 8.55

This component examines the strength and diversity of the local business community, including factors such as the number of businesses, employment levels, and industry diversity. Franklin County's performance on this dimension is average when compared to other North Carolina counties, ranking 70th in the state.

Notable variables for Franklin County within this dimension include:

VARIABLE STRENGTH	FACTOR	FRANKLIN COUNTY VALUE	NC COUNTY AVERAGE VALUE
Strongest	Percentage of Companies in Science, Engineering, & Technology Industries	9.03%	6.13%
2nd Strongest	Average Weekly Wages	\$1,013	\$951
Bottom 10 in NC, Weakest	Ratio of Available Child Care Slots to Number of Children under Five	0.25	0.59

County Government Fiscal Strength: 28.15

This component looks at the financial health of local governments, including their ability to generate revenue, manage debt, and maintain adequate reserves to weather economic downturns. Franklin County's performance on this dimension is fairly weak when compared to other North Carolina counties, ranking 77th in the state.

Notable variables for Franklin County within this dimension include:

VARIABLE STRENGTH	FACTOR	FRANKLIN COUNTY VALUE	NC COUNTY AVERAGE VALUE
Strongest	Dependency Ratio of County Government	0.13	0.16
2nd Strongest	Operations Ratio of County Government	1.11	1.11
Bottom 10 in NC, Weakest	Capital Assets Condition Ratio of County Government	0.37	0.51

Communication: 56.24

This component assesses the availability and quality of communication infrastructure, such as broadband internet access, which is crucial for businesses and residents to stay connected and resilient during disruptions. Franklin County's performance on this dimension is average when compared to other North Carolina counties, ranking 37th in the state.

Notable variables for Franklin County within this dimension include:

VARIABLE STRENGTH	FACTOR	FRANKLIN COUNTY VALUE	NC COUNTY AVERAGE VALUE
Strongest	In-Vehicle High-Speed Mobile Data Availability	0.49	0.37
2nd Strongest	Local High-Speed Mobile Data Availability	0.74	0.66
Weakest	Broadband Availability	0.51	0.6

Housing & Transportation: 73.13

This component evaluates the accessibility and affordability of housing, as well as the availability of reliable transportation options, which are essential for a resilient workforce and economy. Franklin County's performance on this dimension is fairly strong when compared to other North Carolina counties, ranking 27th in the state.

Notable variables for Franklin County within this dimension include:

VARIABLE STRENGTH	FACTOR	FRANKLIN COUNTY VALUE	NC COUNTY AVERAGE VALUE
Top 10 in NC, Strongest	Average Available Rent Money less the Average HUD Fair Market Rent	\$1,385.9	\$799.87
Top 10 in NC, 2nd Strongest	Percentage of Owner-Occupied Homes	68.68%	57.87%
Bottom 10 in NC	Percentage of People Driving Alone to Work	90.09%	86.36%
Bottom 10 in NC, Weakest	Percentage of People with Commute Times Over 45 Minutes	32.94%	16.69%

Healthcare: 13.31

The healthcare component examines the availability and quality of healthcare facilities, services, and professionals, which are critical for maintaining a healthy and productive workforce. Franklin County's performance on this dimension is weak when compared to other North Carolina counties, ranking 91st in the state.

Notable variables for Franklin County within this dimension include:

VARIABLE STRENGTH	FACTOR	FRANKLIN COUNTY VALUE	NC COUNTY AVERAGE VALUE
Strongest	Opioid Deaths per	40.2	38.73

	100,000 Residents		
2nd Strongest	Nurses per 10,000 Residents	89.49	262.64
Bottom 10 in NC, Weakest	Physicians per 10,000 Residents	2.32	16.05

Community Cohesion: 88.37

This component looks at the strength of social networks, community engagement, and the ability of residents to work together to address challenges and support one another during times of adversity. Franklin County's performance on this dimension is strong when compared to other North Carolina counties, ranking 3rd in the state.

Notable variables for Franklin County within this dimension include:

VARIABLE STRENGTH	FACTOR	FRANKLIN COUNTY VALUE	NC COUNTY AVERAGE VALUE
Top 10 in NC, Strongest	Yearly Population Change Percentage	5.738%	0.906%
2nd Strongest	Property Crimes per 10,000 Residents	7.58	15.74
Weakest	Nonprofits Organizations per 1,000 Residents	2.71	3.17

Socioeconomics: 70.11

This component considers factors such as income levels, poverty rates, and inequality, which can impact a community's ability to withstand and recover from economic shocks. Franklin County's performance on this dimension is strong when compared to other North Carolina counties, ranking 14th in the state.

Notable variables for Franklin County within this dimension include:

VARIABLE STRENGTH	FACTOR	FRANKLIN COUNTY VALUE	NC COUNTY AVERAGE VALUE
Top 10 in NC, Strongest	Median Household Income	\$110,1	\$70,088
Top 10 in NC, 2nd Strongest	Gini Coefficient (Income Inequality)	0.41	0.46
Weakest	Percentage of Population without a High School Diploma	9.12%	9.05%

Education: 37.63

This component evaluates the quality of educational institutions and the educational attainment levels of the local population, which play a crucial role in developing a skilled and adaptable workforce. Franklin County's performance on this dimension is average when compared to other North Carolina counties, ranking 68th in the state.

Notable variables for Franklin County within this dimension include:

VARIABLE STRENGTH	FACTOR	FRANKLIN COUNTY VALUE	NC COUNTY AVERAGE VALUE
Strongest	Postsecondary Enrollment Percentage	26.57%	25.48%
2nd Strongest	Teacher Attrition Rate	0.1	0.12
Bottom 10 in NC, Weakest	Graduation Percentage	82.6%	88.03%

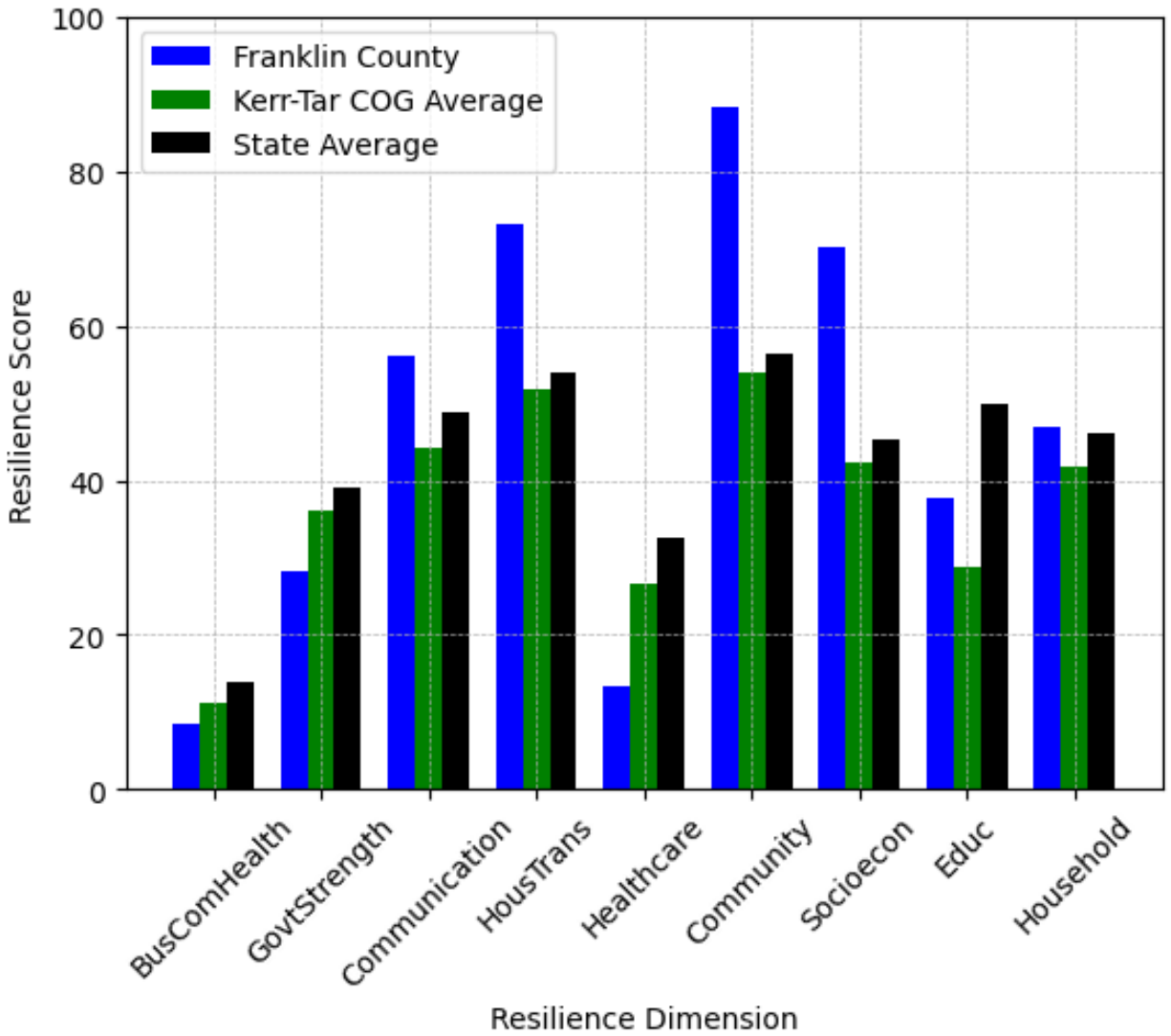
Household Characteristics: 47.01

This component examines factors such as the proportion of single-parent households, age distribution, and the proportion of individuals with disabilities, as these elements can influence a community's resilience and ability to recover from economic disruptions. Franklin County's performance on this dimension is average when compared to other North Carolina counties, ranking 43rd in the state.

Notable variables for Franklin County within this dimension include:

VARIABLE STRENGTH	FACTOR	FRANKLIN COUNTY VALUE	NC COUNTY AVERAGE VALUE
Strongest	Percentage of Population 65 and Older	16.94%	20.53%
2nd Strongest	Percentage of Single Parent Households	33.914%	36.132%
Weakest	Percentage of Population with Limited English Proficiency	1.477%	1.454%

Franklin County's Resilience Dimension Scores Over Time As Compared to the Region and State Averages



Note: Resilience Scores are normalized from 1 to 100 with the most resilient county scoring 100. The Resilience Score is determined based on a county's performance relative to NC's other 99 counties.

Notable Trends in Resilience Indicators, 2017-2022

NOTE: The key trends in the this section are identified based on change rates of at least .15 standard deviations over at least 5 years. Variables are positively oriented such that a positive trend indicates improved performance (e.g., 'improvement' in property crime is a lower crime rate, while 'decline' in property crime indicates a higher crime rate).

Trends in the Business Community Health dimension:

Total Employment Level: **1,018** (5-year change rate = **8.35%**, from 12,189 to 13,207)

↓ Change in rank from 61 to 62 in NC

Average Weekly Wages: **169 dollars** (5-year change rate = **20.02%**, from 844 to 1,013)

↓ Change in rank from 15 to 20 in NC

Real GDP in Current Dollars: **-8,084 dollars** (5-year change rate = **-0.45%**, from 1,792,087 to 1,784,003)

↓ Change in rank from 50 to 53 in NC

Ratio of Available Child Care Slots to Number of Children under Five: **-0.17** (5-year change rate = **-40.54%**, from 0.43 to 0.25)

↓ Change in rank from 86 to 98 in NC

Trends in the County Government Fiscal Strength dimension:

Adjusted Tax Base: **20,993 dollars** (5-year change rate = **29.84%**, from 70,342 to 91,335)

↑ Change in rank from 75 to 64 in NC

County Sales Tax: **7,773,398 dollars** (5-year change rate = **72.24%**, from 10,761,088 to 18,534,486)

↑ Change in rank from 47 to 46 in NC

Trends in the Housing & Transportation dimension:

Ratio of Average Estimated Home Value to Median Income : **2.14** (5-year change rate = **36.99%**, from 5.78 to 7.91)

↑ Change in rank from 48 to 47 in NC

Average Available Rent Money less the Average HUD Fair Market Rent: **467.9 dollars** (5-year change rate = **50.97%**, from 918 to 1,385.9)

→ No change in rank

Trends in the Healthcare dimension:

Opioid Deaths per 100,000 Residents: **22.1** (5-year change rate = **122.1%**, from 18.1 to 40.2)

↓ Change in rank from 32 to 60 in NC

Nurses per 10,000 Residents: **-2.18** (5-year change rate = **-2.38%**, from 91.67 to 89.49)

↑ Change in rank from 80 to 78 in NC

Physicians per 10,000 Residents: **1.08** (5-year change rate = **87.1%**, from 1.24 to 2.32)

→ No change in rank

Mental Health Professionals per 10,000 Residents: **1.32** (5-year change rate = **50.19%**, from 2.63 to 3.95)

↑ Change in rank from 89 to 78 in NC

Trends in the Community Cohesion dimension:

Property Crimes per 10,000 Residents: **-4.77** (4-year change rate = **-38.64%**, from 12.35 to 7.58)

↑ Change in rank from 21 to 11 in NC

Trends in the Socioeconomics dimension:

Unemployment Rate (Q4): **-0.8 percent** (5-year change rate = **-19.38%**, from 4.3 to 3.5)

↑ Change in rank from 49 to 39 in NC

Median Household Income: **29,900 dollars** (5-year change rate = **37.28%**, from 80,200 to 110,100)

→ No change in rank

Trends in the Education dimension:

Graduation Percentage: **-0.5 percent** (5-year change rate = **-0.6%**, from 83.1 to 82.6)

↓ Change in rank from 81 to 91 in NC

Dropout Rate: **-1.74 percent** (5-year change rate = **-53.84%**, from 3.23 to 1.49)

↑ Change in rank from 86 to 45 in NC

3rd Grade Reading Proficiency: **-6.5 percent** (5-year change rate = **-13.77%**, from 47.2 to 40.7)

↑ Change in rank from 81 to 61 in NC

Data Advisements:

- Availability of Broadband Services is not available for 2022 and was excluded from calculating this county's dimension and resilience score.
- Adoption Rate of Broadband Services is not available for 2022 and was excluded from calculating this county's dimension and resilience score.