

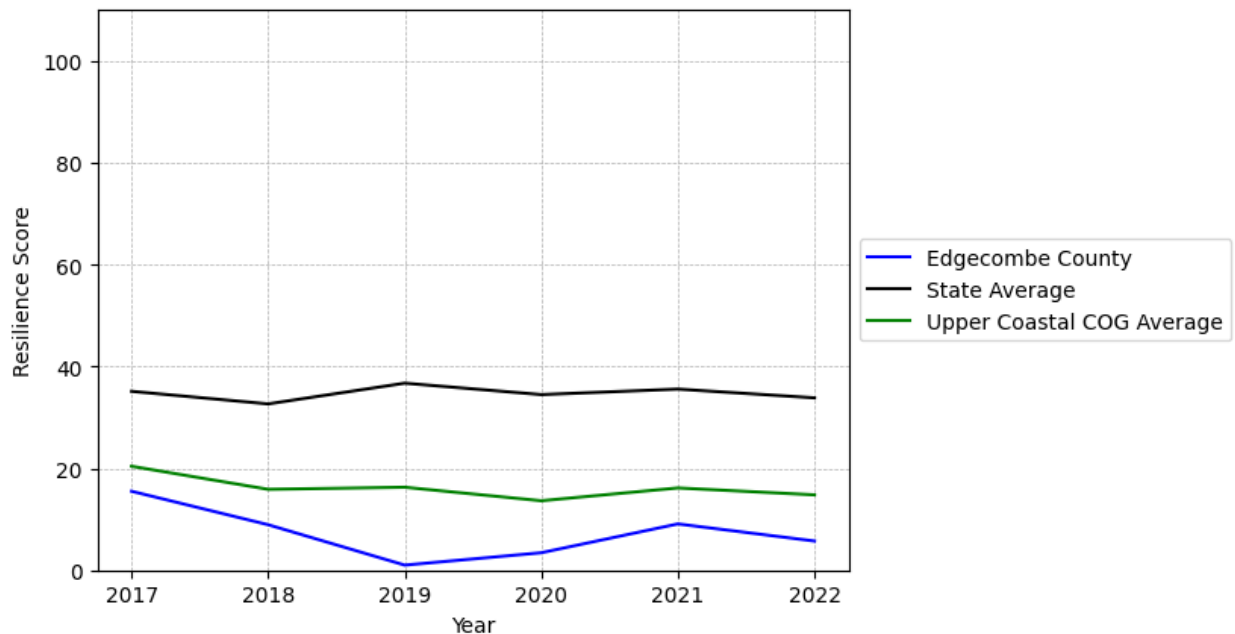
# Edgecombe County Summary

---

**Resilience Score: 5.73**

In 2022, Edgecombe County achieved a Resilience Score of 5.73, which is weak as compared to the North Carolina State average.

**Edgecombe County's Resilience Score Over Time  
As Compared to the Region and State Averages**



*Note: Resilience Scores are normalized from 1 to 100 with the most resilient county scoring 100. The Resilience Score is determined based on a county's performance relative to NC's other 99 counties.*

Edgecombe County's Resilience Score is comprised of 9 distinct dimensions of resilience. Below are Edgecombe County's scores for 2022 on those 9 dimensions, and their rank relative to other North Carolina counties.

### Business Community Health: 11.17

This component examines the strength and diversity of the local business community, including factors such as the number of businesses, employment levels, and industry diversity. Edgecombe County's performance on this dimension is average when compared to other North Carolina counties, ranking 51st in the state.

Notable variables for Edgecombe County within this dimension include:

VARIABLE STRENGTH	FACTOR	EDGECOMBE COUNTY VALUE	NC COUNTY AVERAGE VALUE
Strongest	Ratio of Available Child Care Slots to Number of Children under Five	0.69	0.59
2nd Strongest	Science, Engineering, & Technology Industries Employment Percentage	1.5%	1.79%
Weakest	Percentage of Companies in Science, Engineering, & Technology Industries	4.22%	6.13%

---

### County Government Fiscal Strength: 2.76

This component looks at the financial health of local governments, including their ability to generate revenue, manage debt, and maintain adequate reserves to weather economic downturns. Edgecombe County's performance on this dimension is weak when compared to other North Carolina counties, ranking 99th in the state.

Notable variables for Edgecombe County within this dimension include:

VARIABLE STRENGTH	FACTOR	EDGECOMBE COUNTY VALUE	NC COUNTY AVERAGE VALUE
Strongest	Solvency Ratio of County Government	37.94	46.7
2nd Strongest	County Sales Tax	\$11,257,081	\$31,151,902
Bottom 10 in NC	Capital Assets Condition Ratio of County Government	0.36	0.51
Bottom 10 in NC, Weakest	Adjusted Tax Base	\$66,062	\$124,092

---

### Communication: 43.17

This component assesses the availability and quality of communication infrastructure, such as broadband internet access, which is crucial for businesses and residents to stay connected and resilient during disruptions. Edgecombe County's performance on this dimension is average when compared to other North Carolina counties, ranking 70th in the state.

Notable variables for Edgecombe County within this dimension include:

VARIABLE STRENGTH	FACTOR	EDGECOMBE COUNTY VALUE	NC COUNTY AVERAGE VALUE
Strongest	In-Vehicle High-Speed Mobile Data Availability	0.4	0.37
2nd Strongest	Local High-Speed Mobile Data Availability	0.68	0.66
Weakest	Percentage of Population without Smartphones	22.4%	17.22%

---

### Housing & Transportation: 45.07

This component evaluates the accessibility and affordability of housing, as well as the availability of reliable transportation options, which are essential for a resilient workforce and economy. Edgecombe County's performance on this dimension is fairly weak when compared to other North Carolina counties, ranking 78th in the state.

Notable variables for Edgecombe County within this dimension include:

VARIABLE STRENGTH	FACTOR	EDGECOMBE COUNTY VALUE	NC COUNTY AVERAGE VALUE
Strongest	Percentage of People with Commute Times Over 45 Minutes	10.56%	16.69%
2nd Strongest	Percentage of People Driving Alone to Work	84.44%	86.36%
Bottom 10 in NC	Percentage of Homes Built Before 1980	53.55%	40.9%
Bottom 10 in NC, Weakest	Percentage of Population without Vehicles	10.42%	5.75%

---

### Healthcare: 18.31

The healthcare component examines the availability and quality of healthcare facilities, services, and professionals, which are critical for maintaining a healthy and productive workforce.

Edgecombe County's performance on this dimension is fairly weak when compared to other North Carolina counties, ranking 78th in the state.

Notable variables for Edgecombe County within this dimension include:

VARIABLE STRENGTH	FACTOR	EDGECOMBE COUNTY VALUE	NC COUNTY AVERAGE VALUE
<b>Strongest</b>	Nursing Home Beds per 1,000 Residents of Age 65+	27.31	27.53
<b>2nd Strongest</b>	Nurses per 10,000 Residents	145.04	262.64
<b>Weakest</b>	Opioid Deaths per 100,000 Residents	48.6	38.73

### Community Cohesion: 41.61

This component looks at the strength of social networks, community engagement, and the ability of residents to work together to address challenges and support one another during times of adversity. Edgecombe County's performance on this dimension is fairly weak when compared to other North Carolina counties, ranking 83rd in the state.

Notable variables for Edgecombe County within this dimension include:

VARIABLE STRENGTH	FACTOR	EDGECOMBE COUNTY VALUE	NC COUNTY AVERAGE VALUE
<b>Strongest</b>	Nonprofits Organizations per 1,000 Residents	3.37	3.17
<b>2nd Strongest</b>	Property Crimes per 10,000 Residents	15.98	15.74
<b>Weakest</b>	Violent Crimes per 10,000 Residents	6.47	3.07

### Socioeconomics: 16.69

This component considers factors such as income levels, poverty rates, and inequality, which can impact a community's ability to withstand and recover from economic shocks. Edgecombe County's performance on this dimension is weak when compared to other North Carolina counties, ranking 92nd in the state.

Notable variables for Edgecombe County within this dimension include:

VARIABLE	FACTOR	EDGECOMBE	NC COUNTY
----------	--------	-----------	-----------

STRENGTH		COUNTY VALUE	AVERAGE VALUE
Strongest	Gini Coefficient (Income Inequality)	0.46	0.46
2nd Strongest	Percentage of Population without a High School Diploma	10.02%	9.05%
Bottom 10 in NC	Total Percentage of Population Below 150% Poverty Line	35.51%	25.93%
Bottom 10 in NC, Weakest	Unemployment Rate (Q4)	6.2%	3.9%

### Education: 21.63

This component evaluates the quality of educational institutions and the educational attainment levels of the local population, which play a crucial role in developing a skilled and adaptable workforce. Edgecombe County's performance on this dimension is weak when compared to other North Carolina counties, ranking 92nd in the state.

Notable variables for Edgecombe County within this dimension include:

VARIABLE STRENGTH	FACTOR	EDGECOMBE COUNTY VALUE	NC COUNTY AVERAGE VALUE
Strongest	Postsecondary Enrollment Percentage	21.8%	25.48%
2nd Strongest	Student to Teacher Ratio	15	14
Bottom 10 in NC, Weakest	Dropout Rate	3.78%	1.65%

### Household Characteristics: 24.88

This component examines factors such as the proportion of single-parent households, age distribution, and the proportion of individuals with disabilities, as these elements can influence a community's resilience and ability to recover from economic disruptions. Edgecombe County's performance on this dimension is weak when compared to other North Carolina counties, ranking 90th in the state.

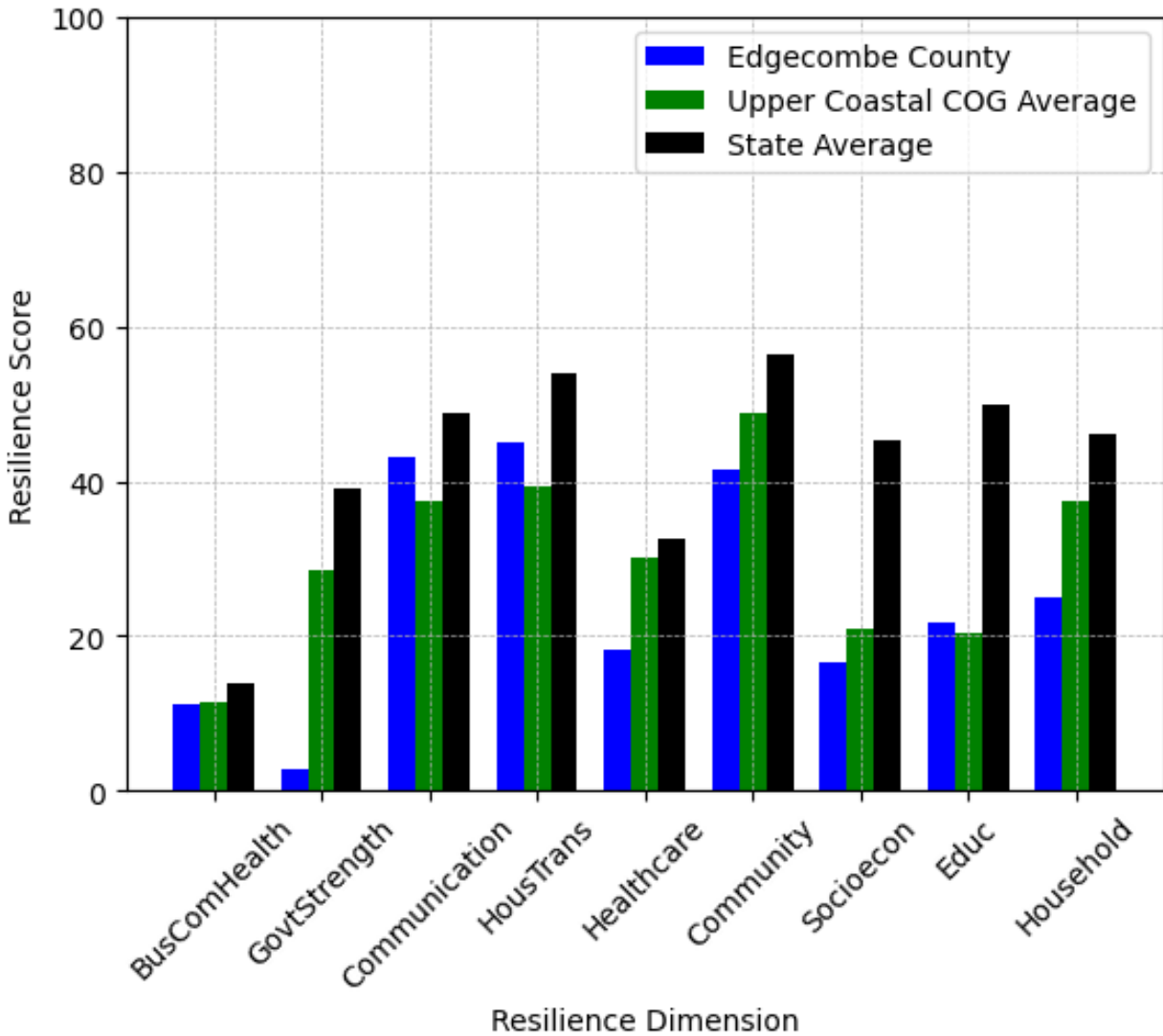
Notable variables for Edgecombe County within this dimension include:

VARIABLE STRENGTH	FACTOR	EDGECOMBE COUNTY VALUE	NC COUNTY AVERAGE VALUE
Strongest	Percentage of Population with Limited English Proficiency	0.779%	1.454%

<b>2nd Strongest</b>	Percentage of Population with a Disability	15.969%	16.566%
<b>Bottom 10 in NC, Weakest</b>	Percentage of Single Parent Households	64.579%	36.132%

---

## Edgecombe County's Resilience Dimension Scores Over Time As Compared to the Region and State Averages



*Note: Resilience Scores are normalized from 1 to 100 with the most resilient county scoring 100. The Resilience Score is determined based on a county's performance relative to NC's other 99 counties.*

## **Notable Trends in Resilience Indicators, 2017-2022**

*NOTE: The key trends in the this section are identified based on change rates of at least .15 standard deviations over at least 5 years. Variables are positively oriented such that a positive trend indicates improved performance (e.g., 'improvement' in property crime is a lower crime rate, while 'decline' in property crime indicates a higher crime rate).*

### **Trends in the Business Community Health dimension:**

Total Employment Level: **-1,142** (5-year change rate = **-6.9%**, from 16,561 to 15,418)

↓ Change in rank from 49 to 54 in NC

Average Weekly Wages: **189 dollars** (5-year change rate = **26.58%**, from 711 to 900)

↓ Change in rank from 55 to 58 in NC

Real GDP in Current Dollars: **-17,045 dollars** (5-year change rate = **-1.04%**, from 1,641,116 to 1,624,071)

↓ Change in rank from 54 to 56 in NC

### **Trends in the County Government Fiscal Strength dimension:**

Adjusted Tax Base: **9,690 dollars** (5-year change rate = **17.19%**, from 56,372 to 66,062)

↓ Change in rank from 96 to 98 in NC

County Sales Tax: **4,056,766 dollars** (5-year change rate = **56.34%**, from 7,200,314 to 11,257,081)

→ No change in rank

### **Trends in the Housing & Transportation dimension:**

Ratio of Average Estimated Home Value to Median Income : **1.57** (5-year change rate = **40.03%**, from 3.92 to 5.49)

↓ Change in rank from 34 to 37 in NC

Average Available Rent Money less the Average HUD Fair Market Rent: **248.6 dollars** (5-year change rate = **60.24%**, from 412.7 to 661.3)

↑ Change in rank from 75 to 69 in NC



**Trends in the Healthcare dimension:**

Opioid Deaths per 100,000 Residents: **27.7** (5-year change rate = **132.54%**, from 20.9 to 48.6)

↓ Change in rank from 43 to 79 in NC

Nurses per 10,000 Residents: **-29.78** (5-year change rate = **-17.03%**, from 174.82 to 145.04)

↓ Change in rank from 50 to 56 in NC

Physicians per 10,000 Residents: **-0.87** (5-year change rate = **-9%**, from 9.67 to 8.8)

↓ Change in rank from 60 to 63 in NC

Mental Health Professionals per 10,000 Residents: **-0.94** (5-year change rate = **-18.29%**, from 5.14 to 4.2)

↓ Change in rank from 53 to 74 in NC

**Trends in the Community Cohesion dimension:**

Property Crimes per 10,000 Residents: **-12.88** (4-year change rate = **-44.63%**, from 28.86 to 15.98)

↑ Change in rank from 81 to 59 in NC

Nonprofits Organizations per 1,000 Residents: **0.51** (5-year change rate = **17.84%**, from 2.86 to 3.37)

↑ Change in rank from 46 to 44 in NC

**Trends in the Socioeconomics dimension:**

Unemployment Rate (Q4): **-1 percent** (5-year change rate = **-13.95%**, from 7.2 to 6.2)

↓ Change in rank from 97 to 100 in NC

Median Household Income: **12,400 dollars** (5-year change rate = **25.25%**, from 49,100 to 61,500)

↑ Change in rank from 65 to 64 in NC

**Trends in the Education dimension:**

Graduation Percentage: **6 percent** (5-year change rate = **7.48%**, from 80.2 to 86.2)

↑ Change in rank from 93 to 76 in NC

Dropout Rate: **0.55 percent** (5-year change rate = **17.08%**, from 3.23 to 3.78)

↓ Change in rank from 85 to 99 in NC

Student to Teacher Ratio: **-1** (4-year change rate = **-5.55%**, from 15 to 15)

↑ Change in rank from 71 to 62 in NC

3rd Grade Reading Proficiency: **0.5 percent** (5-year change rate = **1.6%**, from 31.2 to 31.7)

↑ Change in rank from 100 to 86 in NC

**Data Advisements:**

- Availability of Broadband Services is not available for 2022 and was excluded from calculating this county's dimension and resilience score.
- Adoption Rate of Broadband Services is not available for 2022 and was excluded from calculating this county's dimension and resilience score.