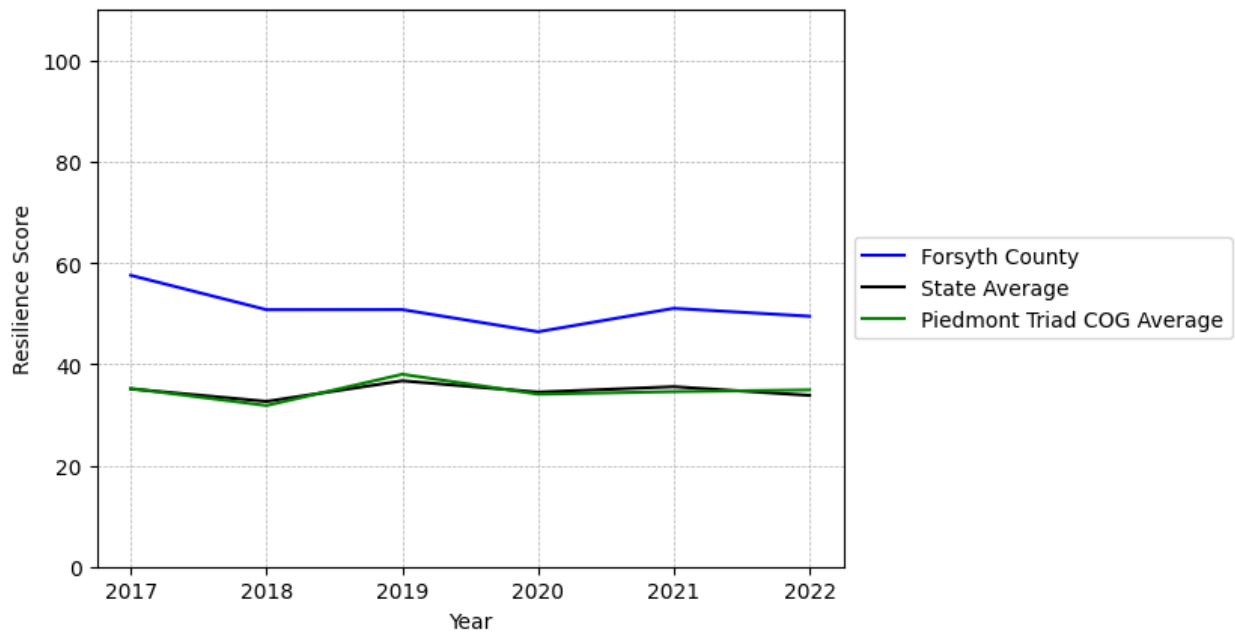


Forsyth County Summary

Resilience Score: 49.47

In 2022, Forsyth County achieved a Resilience Score of 49.47, which is fairly strong as compared to the North Carolina State average.

**Forsyth County's Resilience Score Over Time
As Compared to the Region and State Averages**



Note: Resilience Scores are normalized from 1 to 100 with the most resilient county scoring 100. The Resilience Score is determined based on a county's performance relative to NC's other 99 counties.

Forsyth County's Resilience Score is comprised of 9 distinct dimensions of resilience. Below are Forsyth County's scores for 2022 on those 9 dimensions, and their rank relative to other North Carolina counties.

Business Community Health: 32.44

This component examines the strength and diversity of the local business community, including factors such as the number of businesses, employment levels, and industry diversity. Forsyth County's performance on this dimension is strong when compared to other North Carolina counties, ranking 6th in the state.

Notable variables for Forsyth County within this dimension include:

VARIABLE STRENGTH	FACTOR	FORSYTH COUNTY VALUE	NC COUNTY AVERAGE VALUE
Top 10 in NC, Strongest	Total Employment Level	194,245	45,758
Top 10 in NC, 2nd Strongest	Average Weekly Wages	\$1,221	\$951
Top 10 in NC	Real GDP in Current Dollars	\$26,511,548	\$6,092,555
Top 10 in NC	Science, Engineering, & Technology Industries Employment Percentage	5.46%	1.79%
Bottom 10 in NC, Weakest	Private Sector Diversity	0.06	0.28

County Government Fiscal Strength: 72.68

This component looks at the financial health of local governments, including their ability to generate revenue, manage debt, and maintain adequate reserves to weather economic downturns. Forsyth County's performance on this dimension is strong when compared to other North Carolina counties, ranking 9th in the state.

Notable variables for Forsyth County within this dimension include:

VARIABLE STRENGTH	FACTOR	FORSYTH COUNTY VALUE	NC COUNTY AVERAGE VALUE
Top 10 in NC, Strongest	Debt Service Ratio of County Government	0	0.07
Top 10 in NC, 2nd Strongest	County Sales Tax	\$117,035,336	\$31,151,902
Top 10 in NC	Operations Ratio of County Government	1.26	1.11
Top 10 in NC	Dependency Ratio of County Government	0.1	0.16
Weakest	Solvency Ratio of County Government	36.01	46.7

Communication: 89.83

This component assesses the availability and quality of communication infrastructure, such as broadband internet access, which is crucial for businesses and residents to stay connected and resilient during disruptions. Forsyth County's performance on this dimension is strong when compared to other North Carolina counties, ranking 3rd in the state.

Notable variables for Forsyth County within this dimension include:

VARIABLE STRENGTH	FACTOR	FORSYTH COUNTY VALUE	NC COUNTY AVERAGE VALUE
Top 10 in NC, Strongest	Local High-Speed Mobile Data Availability	0.99	0.66
Top 10 in NC, 2nd Strongest	In-Vehicle High-Speed Mobile Data Availability	0.9	0.37
Weakest	Broadband Availability	0.76	0.6

Housing & Transportation: 71.29

This component evaluates the accessibility and affordability of housing, as well as the availability of reliable transportation options, which are essential for a resilient workforce and economy. Forsyth County's performance on this dimension is fairly strong when compared to other North Carolina counties, ranking 31st in the state.

Notable variables for Forsyth County within this dimension include:

VARIABLE STRENGTH	FACTOR	FORSYTH COUNTY VALUE	NC COUNTY AVERAGE VALUE
Top 10 in NC, Strongest	Ratio of Average Estimated Home Value to Median Income	1.34	13.67
Top 10 in NC, 2nd Strongest	Percentage of People with Commute Times Over 45 Minutes	9.31%	16.69%
Weakest	Percentage of Population without Vehicles	6.64%	5.75%

Healthcare: 53.74

The healthcare component examines the availability and quality of healthcare facilities, services, and professionals, which are critical for maintaining a healthy and productive workforce. Forsyth County's performance on this dimension is strong when compared to other North Carolina counties, ranking 6th in the state.

Notable variables for Forsyth County within this dimension include:

VARIABLE STRENGTH	FACTOR	FORSYTH COUNTY VALUE	NC COUNTY AVERAGE VALUE
Top 10 in NC, Strongest	Nurses per 10,000 Residents	1,174.65	262.64
Top 10 in NC, 2nd Strongest	Physicians per 10,000 Residents	56.42	16.05
Weakest	Opioid Deaths per 100,000 Residents	47.3	38.73

Community Cohesion: 26.35

This component looks at the strength of social networks, community engagement, and the ability of residents to work together to address challenges and support one another during times of adversity. Forsyth County's performance on this dimension is weak when compared to other North Carolina counties, ranking 96th in the state.

Notable variables for Forsyth County within this dimension include:

VARIABLE STRENGTH	FACTOR	FORSYTH COUNTY VALUE	NC COUNTY AVERAGE VALUE
Strongest	Nonprofits Organizations per 1,000 Residents	4.28	3.17
2nd Strongest	Yearly Population Change Percentage	0.732%	0.906%
Bottom 10 in NC	Property Crimes per 10,000 Residents	31.73	15.74
Bottom 10 in NC	Percentage of Inactive Voters	15.41%	11.3%
Bottom 10 in NC, Weakest	Violent Crimes per 10,000 Residents	8.47	3.07

Socioeconomics: 52.23

This component considers factors such as income levels, poverty rates, and inequality, which can impact a community's ability to withstand and recover from economic shocks. Forsyth County's performance on this dimension is average when compared to other North Carolina counties, ranking 35th in the state.

Notable variables for Forsyth County within this dimension include:

VARIABLE STRENGTH	FACTOR	FORSYTH COUNTY VALUE	NC COUNTY AVERAGE VALUE
-------------------	--------	----------------------	-------------------------

Strongest	Population 25+ with at least a Bachelor's Degree	35.31%	24.4%
2nd Strongest	Percentage of Households with Income over \$200k	7.17%	5.28%
Weakest	Gini Coefficient (Income Inequality)	0.48	0.46

Education: 36.14

This component evaluates the quality of educational institutions and the educational attainment levels of the local population, which play a crucial role in developing a skilled and adaptable workforce. Forsyth County's performance on this dimension is fairly weak when compared to other North Carolina counties, ranking 69th in the state.

Notable variables for Forsyth County within this dimension include:

VARIABLE STRENGTH	FACTOR	FORSYTH COUNTY VALUE	NC COUNTY AVERAGE VALUE
Strongest	Postsecondary Enrollment Percentage	26.67%	25.48%
2nd Strongest	Local LEA Financial Resources (per ADM)	\$8,496	\$8,683
Weakest	Dropout Rate	2.64%	1.65%

Household Characteristics: 43.74

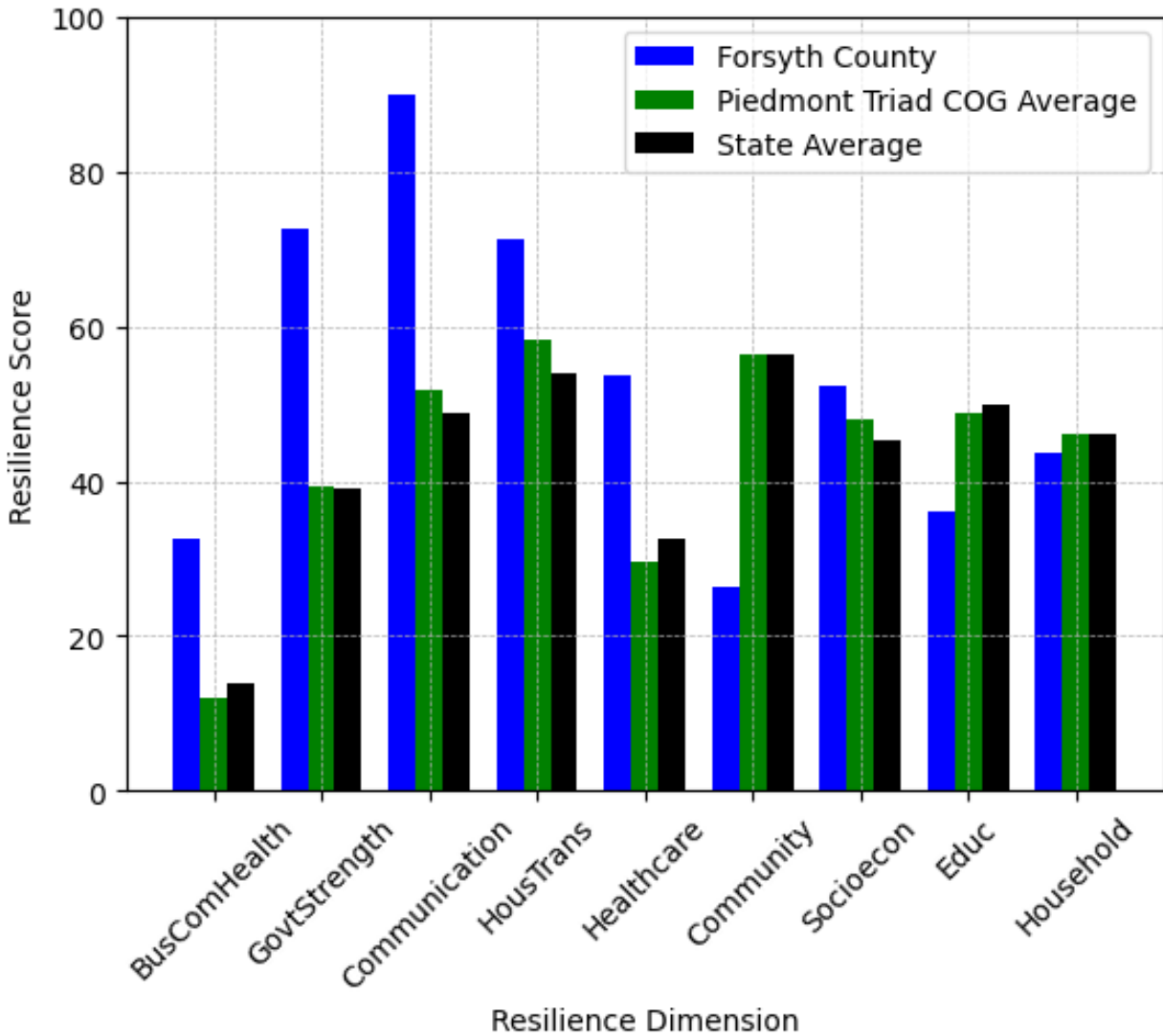
This component examines factors such as the proportion of single-parent households, age distribution, and the proportion of individuals with disabilities, as these elements can influence a community's resilience and ability to recover from economic disruptions. Forsyth County's performance on this dimension is average when compared to other North Carolina counties, ranking 55th in the state.

Notable variables for Forsyth County within this dimension include:

VARIABLE STRENGTH	FACTOR	FORSYTH COUNTY VALUE	NC COUNTY AVERAGE VALUE
Strongest	Percentage of Population with a Disability	12.271%	16.566%
2nd Strongest	Percentage of Population 65 and Older	16.41%	20.53%
Weakest	Percentage of Population with Limited English Proficiency	2.571%	1.454%



Forsyth County's Resilience Dimension Scores Over Time As Compared to the Region and State Averages



Note: Resilience Scores are normalized from 1 to 100 with the most resilient county scoring 100. The Resilience Score is determined based on a county's performance relative to NC's other 99 counties.

Notable Trends in Resilience Indicators, 2017-2022

NOTE: The key trends in the this section are identified based on change rates of at least .15 standard deviations over at least 5 years. Variables are positively oriented such that a positive trend indicates improved performance (e.g., 'improvement' in property crime is a lower crime rate, while 'decline' in property crime indicates a higher crime rate).

Trends in the Business Community Health dimension:

Total Employment Level: **7,883** (5-year change rate = **4.23%**, from 186,362 to 194,245)

→ No change in rank

Average Weekly Wages: **215 dollars** (5-year change rate = **21.37%**, from 1,006 to 1,221)

→ No change in rank

Real GDP in Current Dollars: **-53,919 dollars** (5-year change rate = **-0.2%**, from 26,565,467 to 26,511,548)

→ No change in rank

Trends in the County Government Fiscal Strength dimension:

Adjusted Tax Base: **13,211 dollars** (5-year change rate = **14.94%**, from 88,437 to 101,648)

↓ Change in rank from 50 to 52 in NC

County Sales Tax: **46,155,096 dollars** (5-year change rate = **65.12%**, from 70,880,240 to 117,035,336)

↑ Change in rank from 6 to 5 in NC

Trends in the Housing & Transportation dimension:

Ratio of Average Estimated Home Value to Median Income : **0.3** (5-year change rate = **28.77%**, from 1.04 to 1.34)

↓ Change in rank from 4 to 5 in NC

Average Available Rent Money less the Average HUD Fair Market Rent: **474.3 dollars** (5-year change rate = **82.22%**, from 576.9 to 1,051.2)

↑ Change in rank from 35 to 18 in NC

Trends in the Healthcare dimension:

Opioid Deaths per 100,000 Residents: **24.7** (5-year change rate = **109.29%**, from 22.6 to 47.3)

↓ Change in rank from 49 to 75 in NC

Nurses per 10,000 Residents: **-54.07** (5-year change rate = **-4.4%**, from 1,228.72 to 1,174.65)

→ No change in rank

Physicians per 10,000 Residents: **1.84** (5-year change rate = **3.37%**, from 54.58 to 56.42)

→ No change in rank

Mental Health Professionals per 10,000 Residents: **1.19** (5-year change rate = **14.55%**, from 8.18 to 9.37)

↑ Change in rank from 17 to 16 in NC

Trends in the Community Cohesion dimension:

Violent Crimes per 10,000 Residents: **1.95** (4-year change rate = **29.9%**, from 6.52 to 8.47)

↓ Change in rank from 92 to 94 in NC

Property Crimes per 10,000 Residents: **-3.37** (4-year change rate = **-9.61%**, from 35.1 to 31.73)

↓ Change in rank from 91 to 93 in NC

Nonprofits Organizations per 1,000 Residents: **0.95** (5-year change rate = **28.71%**, from 3.32 to 4.28)

↑ Change in rank from 30 to 18 in NC

Trends in the Socioeconomics dimension:

Unemployment Rate (Q4): **-0.5 percent** (5-year change rate = **-12.3%**, from 4.1 to 3.6)

↓ Change in rank from 39 to 52 in NC

Median Household Income: **20,500 dollars** (5-year change rate = **36.03%**, from 56,900 to 77,400)

↑ Change in rank from 30 to 26 in NC

Trends in the Education dimension:

3rd Grade Reading Proficiency: **-11.4 percent** (5-year change rate = **-22.09%**, from 51.6 to 40.2)

↓ Change in rank from 61 to 63 in NC

Data Advisements:

- Availability of Broadband Services is not available for 2022 and was excluded from calculating this county's dimension and resilience score.
- Adoption Rate of Broadband Services is not available for 2022 and was excluded from calculating this county's dimension and resilience score.