

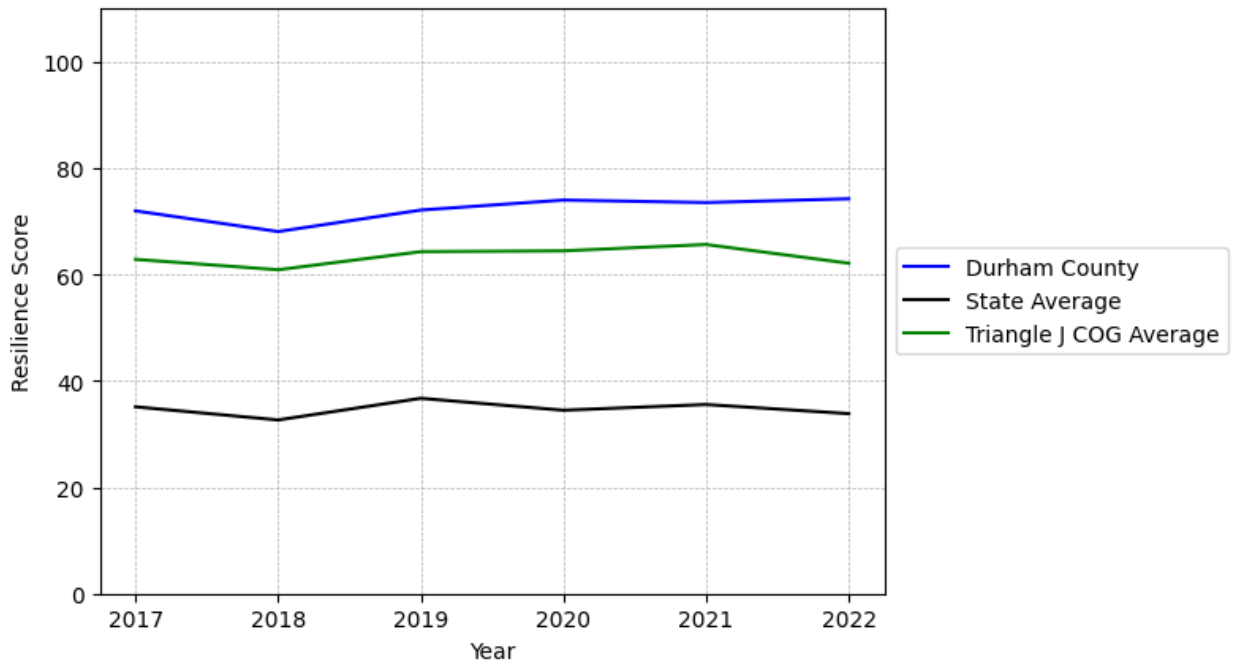
# Durham County Summary

---

**Resilience Score: 74.22**

In 2022, Durham County achieved a Resilience Score of 74.22, which is strong as compared to the North Carolina State average.

**Durham County's Resilience Score Over Time  
As Compared to the Region and State Averages**



*Note: Resilience Scores are normalized from 1 to 100 with the most resilient county scoring 100. The Resilience Score is determined based on a county's performance relative to NC's other 99 counties.*

Durham County's Resilience Score is comprised of 9 distinct dimensions of resilience. Below are Durham County's scores for 2022 on those 9 dimensions, and their rank relative to other North Carolina counties.

### **Business Community Health: 77.27**

This component examines the strength and diversity of the local business community, including factors such as the number of businesses, employment levels, and industry diversity. Durham County's performance on this dimension is strong when compared to other North Carolina counties, ranking 3rd in the state.

Notable variables for Durham County within this dimension include:

| <b>VARIABLE STRENGTH</b>           | <b>FACTOR</b>  | <b>DURHAM COUNTY VALUE</b> | <b>NC COUNTY AVERAGE VALUE</b> |
|------------------------------------|--|----------------------------|--------------------------------|
| <b>Top 10 in NC, Strongest</b>     | Average Weekly Wages   | \$1,685                    | \$951                          |
| <b>Top 10 in NC, 2nd Strongest</b> | Science, Engineering, & Technology Industries Employment Percentage      | 18.12%                     | 1.79%                          |
| <b>Top 10 in NC</b>                | Percentage of Companies in Science, Engineering, & Technology Industries | 17.28%                     | 6.13%                          |
| <b>Top 10 in NC</b>                | Real GDP in Current Dollars  | \$39,750,581               | \$6,092,555                    |
| <b>Top 10 in NC</b>                | Total Employment Level   | 230,917                    | 45,758                         |
| <b>Bottom 10 in NC, Weakest</b>    | Private Sector Diversity   | 0.053                      | 0.28                           |

---

### **County Government Fiscal Strength: 56.12**

This component looks at the financial health of local governments, including their ability to generate revenue, manage debt, and maintain adequate reserves to weather economic downturns. Durham County's performance on this dimension is fairly strong when compared to other North Carolina counties, ranking 26th in the state.

Notable variables for Durham County within this dimension include:

| <b>VARIABLE STRENGTH</b>       | <b>FACTOR</b>                                       | <b>DURHAM COUNTY VALUE</b> | <b>NC COUNTY AVERAGE VALUE</b> |
|--------------------------------|---|----------------------------|--------------------------------|
| <b>Top 10 in NC, Strongest</b> | County Sales Tax                                    | \$107,297,512              | \$31,151,902                   |
| <b>2nd Strongest</b>           | Capital Assets Condition Ratio of County Government | 0.59                       | 0.51                           |
| <b>Weakest</b>                 | Debt Service Ratio of County Government             | 0.13                       | 0.07                           |

---

### Communication: 87.75

This component assesses the availability and quality of communication infrastructure, such as broadband internet access, which is crucial for businesses and residents to stay connected and resilient during disruptions. Durham County's performance on this dimension is strong when compared to other North Carolina counties, ranking 5th in the state.

Notable variables for Durham County within this dimension include:

| VARIABLE STRENGTH           | FACTOR   | DURHAM COUNTY VALUE | NC COUNTY AVERAGE VALUE |
|-----------------------------|--|---------------------|-------------------------|
| Top 10 in NC, Strongest     | In-Vehicle High-Speed Mobile Data Availability | 0.77                | 0.37                    |
| Top 10 in NC, 2nd Strongest | Percentage of Population without Smartphones   | 8.55%               | 17.22%                  |
| Top 10 in NC                | Local High-Speed Mobile Data Availability      | 0.92                | 0.66                    |
| Weakest                     | Broadband Availability                         | 0.78                | 0.6                     |

---

### Housing & Transportation: 79.69

This component evaluates the accessibility and affordability of housing, as well as the availability of reliable transportation options, which are essential for a resilient workforce and economy. Durham County's performance on this dimension is strong when compared to other North Carolina counties, ranking 16th in the state.

Notable variables for Durham County within this dimension include:

| VARIABLE STRENGTH           | FACTOR  | DURHAM COUNTY VALUE | NC COUNTY AVERAGE VALUE |
|-----------------------------|---|---------------------|-------------------------|
| Top 10 in NC, Strongest     | Percentage of People with Commute Times Over 45 Minutes | 8.83%               | 16.69%                  |
| Top 10 in NC, 2nd Strongest | Ratio of Average Estimated Home Value to Median Income  | 2.3                 | 13.67                   |
| Top 10 in NC                | Percentage of People Driving Alone to Work              | 82.41%              | 86.36%                  |
| Weakest                     | Percentage of Owner-Occupied Homes                      | 51.56%              | 57.87%                  |

---

### Healthcare: 75.24

The healthcare component examines the availability and quality of healthcare facilities, services, and professionals, which are critical for maintaining a healthy and productive workforce. Durham County's performance on this dimension is strong when compared to other North Carolina counties, ranking 2nd in the state.

Notable variables for Durham County within this dimension include:

| VARIABLE STRENGTH           | FACTOR   | DURHAM COUNTY VALUE | NC COUNTY AVERAGE VALUE |
|-----------------------------|--|---------------------|-------------------------|
| Top 10 in NC, Strongest     | Physicians per 10,000 Residents                  | 79.41               | 16.05                   |
| Top 10 in NC, 2nd Strongest | Mental Health Professionals per 10,000 Residents | 21.82               | 6.6                     |
| Top 10 in NC                | Nurses per 10,000 Residents                      | 888.01              | 262.64                  |
| Weakest                     | Opioid Deaths per 100,000 Residents              | 38.6                | 38.73                   |

---

### Community Cohesion: 31.3

This component looks at the strength of social networks, community engagement, and the ability of residents to work together to address challenges and support one another during times of adversity. Durham County's performance on this dimension is weak when compared to other North Carolina counties, ranking 93rd in the state.

Notable variables for Durham County within this dimension include:

| VARIABLE STRENGTH        | FACTOR                                       | DURHAM COUNTY VALUE | NC COUNTY AVERAGE VALUE |
|--------------------------|--|---------------------|-------------------------|
| Strongest                | Yearly Population Change Percentage          | 0.915%              | 0.906%                  |
| 2nd Strongest            | Nonprofits Organizations per 1,000 Residents | 3.21                | 3.17                    |
| Bottom 10 in NC          | Percentage of Inactive Voters                | 14.48%              | 11.3%                   |
| Bottom 10 in NC, Weakest | Property Crimes per 10,000 Residents         | 31                  | 15.74                   |

---

### Socioeconomics: 72.38

This component considers factors such as income levels, poverty rates, and inequality, which can impact a community's ability to withstand and recover from economic shocks. Durham County's performance on this dimension is strong when compared to other North Carolina counties, ranking 12th in the state.

Notable variables for Durham County within this dimension include:

| VARIABLE STRENGTH           | FACTOR  | DURHAM COUNTY VALUE | NC COUNTY AVERAGE VALUE |
|-----------------------------|---|---------------------|-------------------------|
| Top 10 in NC, Strongest     | Population 25+ with at least a Bachelor's Degree                  | 51.88%              | 24.4%                   |
| Top 10 in NC, 2nd Strongest | Percentage of Households with Income over \$200k                  | 10.94%              | 5.28%                   |
| Top 10 in NC                | Median Household Income   | \$95,5              | \$70,088                |
| Weakest                     | Percentage of Households Spending more than 30% Income on Housing | 27.97%              | 24.53%                  |

---

### Education: 44.98

This component evaluates the quality of educational institutions and the educational attainment levels of the local population, which play a crucial role in developing a skilled and adaptable workforce. Durham County's performance on this dimension is average when compared to other North Carolina counties, ranking 55th in the state.

Notable variables for Durham County within this dimension include:

| VARIABLE STRENGTH        | FACTOR                                  | DURHAM COUNTY VALUE | NC COUNTY AVERAGE VALUE |
|--------------------------|---|---------------------|-------------------------|
| Top 10 in NC, Strongest  | Local LEA Financial Resources (per ADM) | \$18,204            | \$8,683                 |
| 2nd Strongest            | Student to Teacher Ratio                | 13                  | 14                      |
| Bottom 10 in NC, Weakest | Dropout Rate                            | 3.15%               | 1.65%                   |

---

### Household Characteristics: 48.14

This component examines factors such as the proportion of single-parent households, age distribution, and the proportion of individuals with disabilities, as these elements can influence a community's resilience and ability to recover from economic disruptions. Durham County's

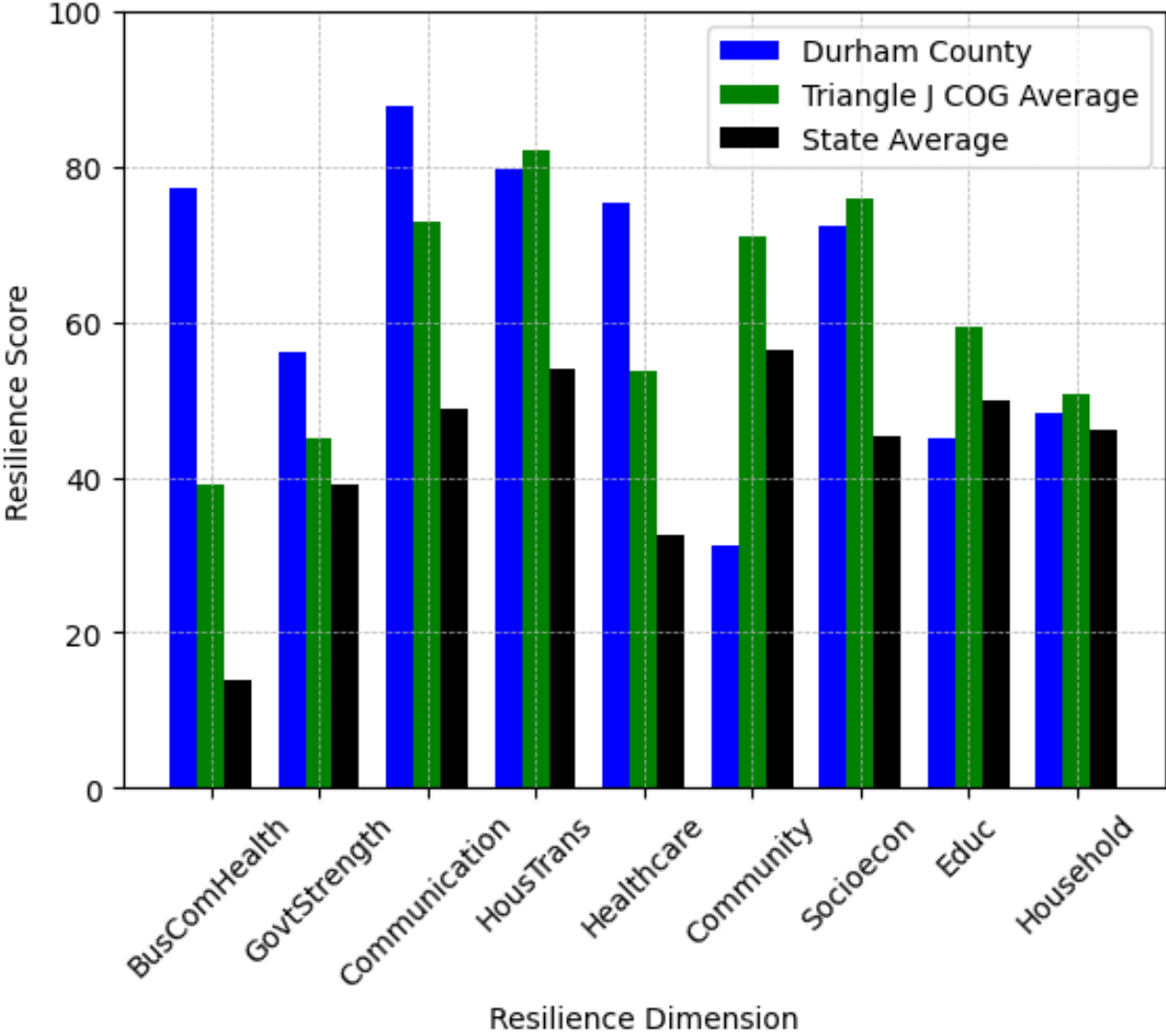
performance on this dimension is average when compared to other North Carolina counties, ranking 38th in the state.

Notable variables for Durham County within this dimension include:

| <b>VARIABLE STRENGTH</b>           | <b>FACTOR</b>   | <b>DURHAM COUNTY VALUE</b> | <b>NC COUNTY AVERAGE VALUE</b> |
|------------------------------------|---|----------------------------|--------------------------------|
| <b>Top 10 in NC, Strongest</b>     | Percentage of Population with a Disability                | 9.685%                     | 16.566%                        |
| <b>Top 10 in NC, 2nd Strongest</b> | Percentage of Population 65 and Older                     | 13.81%                     | 20.53%                         |
| <b>Bottom 10 in NC, Weakest</b>    | Percentage of Population with Limited English Proficiency | 4.63%                      | 1.454%                         |

---

### Durham County's Resilience Dimension Scores Over Time As Compared to the Region and State Averages



*Note: Resilience Scores are normalized from 1 to 100 with the most resilient county scoring 100. The Resilience Score is determined based on a county's performance relative to NC's other 99 counties.*

## **Notable Trends in Resilience Indicators, 2017-2022**

*NOTE: The key trends in the this section are identified based on change rates of at least .15 standard deviations over at least 5 years. Variables are positively oriented such that a positive trend indicates improved performance (e.g., 'improvement' in property crime is a lower crime rate, while 'decline' in property crime indicates a higher crime rate).*

### **Trends in the Business Community Health dimension:**

Total Employment Level: **28,625** (5-year change rate = **14.15%**, from 202,292 to 230,917)

→ No change in rank

Average Weekly Wages: **401 dollars** (5-year change rate = **31.23%**, from 1,284 to 1,685)

→ No change in rank

Real GDP in Current Dollars: **8,049,403 dollars** (5-year change rate = **25.39%**, from 31,701,178 to 39,750,581)

↑ Change in rank from 4 to 3 in NC

### **Trends in the County Government Fiscal Strength dimension:**

Adjusted Tax Base: **35,085 dollars** (5-year change rate = **33.49%**, from 104,754 to 139,839)

↑ Change in rank from 38 to 23 in NC

County Sales Tax: **34,014,584 dollars** (5-year change rate = **46.42%**, from 73,282,928 to 107,297,512)

↓ Change in rank from 5 to 6 in NC

### **Trends in the Housing & Transportation dimension:**

Ratio of Average Estimated Home Value to Median Income : **0.68** (5-year change rate = **41.86%**, from 1.62 to 2.3)

↓ Change in rank from 7 to 8 in NC

Average Available Rent Money less the Average HUD Fair Market Rent: **299.8 dollars** (5-year change rate = **39.16%**, from 765.5 to 1,065.3)



↓ Change in rank from 6 to 15 in NC

**Trends in the Healthcare dimension:**

Opioid Deaths per 100,000 Residents: **21.3** (5-year change rate = **123.12%**, from 17.3 to 38.6)

↓ Change in rank from 29 to 58 in NC

Nurses per 10,000 Residents: **6.82** (5-year change rate = **0.77%**, from 881.19 to 888.01)

→ No change in rank

Physicians per 10,000 Residents: **5.12** (5-year change rate = **6.89%**, from 74.29 to 79.41)

→ No change in rank

Mental Health Professionals per 10,000 Residents: **0.41** (5-year change rate = **1.91%**, from 21.41 to 21.82)

→ No change in rank

**Trends in the Community Cohesion dimension:**

Property Crimes per 10,000 Residents: **-3.21** (4-year change rate = **-9.37%**, from 34.21 to 31)

↓ Change in rank from 89 to 91 in NC

Nonprofits Organizations per 1,000 Residents: **-1.52** (5-year change rate = **-32.06%**, from 4.73 to 3.21)

↓ Change in rank from 12 to 47 in NC

**Trends in the Socioeconomics dimension:**

Unemployment Rate (Q4): **-0.7 percent** (5-year change rate = **-17.7%**, from 3.8 to 3.1)

↑ Change in rank from 14 to 12 in NC

Median Household Income: **22,200 dollars** (5-year change rate = **30.29%**, from 73,300 to 95,500)

↓ Change in rank from 5 to 9 in NC

**Trends in the Education dimension:**

Graduation Percentage: **4.2 percent** (5-year change rate = **4.96%**, from 84.6 to 88.8)

↑ Change in rank from 69 to 45 in NC

Dropout Rate: **-1.07 percent** (5-year change rate = **-25.36%**, from 4.21 to 3.15)

↑ Change in rank from 96 to 94 in NC

Student to Teacher Ratio: **-1** (4-year change rate = **-7.68%**, from 14 to 13)

↑ Change in rank from 27 to 20 in NC

3rd Grade Reading Proficiency: **-5.1 percent** (5-year change rate = **-11.78%**, from 43.3 to 38.2)

↑ Change in rank from 88 to 69 in NC

**Data Advisements:**

- Availability of Broadband Services is not available for 2022 and was excluded from calculating this county's dimension and resilience score.
- Adoption Rate of Broadband Services is not available for 2022 and was excluded from calculating this county's dimension and resilience score.