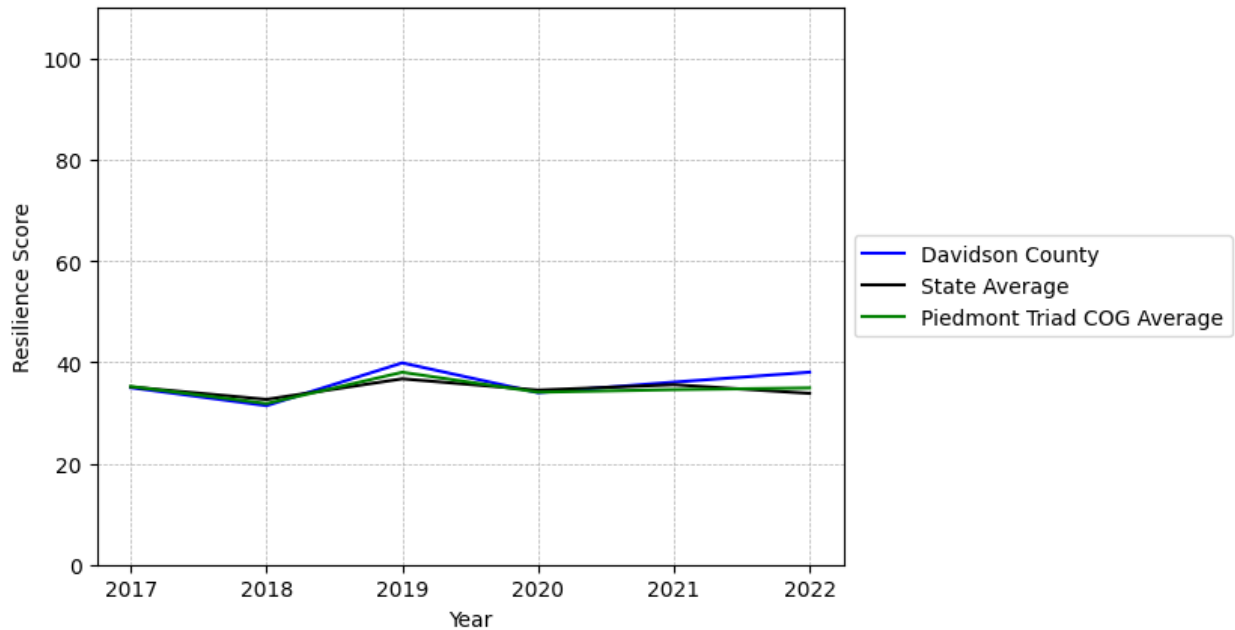


Davidson County Summary

Resilience Score: 38.02

In 2022, Davidson County achieved a Resilience Score of 38.02, which is average as compared to the North Carolina State average.

**Davidson County's Resilience Score Over Time
As Compared to the Region and State Averages**



Note: Resilience Scores are normalized from 1 to 100 with the most resilient county scoring 100. The Resilience Score is determined based on a county's performance relative to NC's other 99 counties.

Davidson County's Resilience Score is comprised of 9 distinct dimensions of resilience. Below are Davidson County's scores for 2022 on those 9 dimensions, and their rank relative to other North Carolina counties.

Business Community Health: 8.72

This component examines the strength and diversity of the local business community, including factors such as the number of businesses, employment levels, and industry diversity. Davidson County's performance on this dimension is average when compared to other North Carolina counties, ranking 67th in the state.

Notable variables for Davidson County within this dimension include:

VARIABLE STRENGTH	FACTOR	DAVIDSON COUNTY VALUE	NC COUNTY AVERAGE VALUE
Strongest	Total Employment Level	46,163	45,758
2nd Strongest	Real GDP in Current Dollars	\$5,013,955	\$6,092,555
Weakest	Private Sector Diversity	0.153	0.28

County Government Fiscal Strength: 60.3

This component looks at the financial health of local governments, including their ability to generate revenue, manage debt, and maintain adequate reserves to weather economic downturns. Davidson County's performance on this dimension is fairly strong when compared to other North Carolina counties, ranking 17th in the state.

Notable variables for Davidson County within this dimension include:

VARIABLE STRENGTH	FACTOR	DAVIDSON COUNTY VALUE	NC COUNTY AVERAGE VALUE
Top 10 in NC, Strongest	Operations Ratio of County Government	1.23	1.11
2nd Strongest	County Sales Tax	\$42,621,32	\$31,151,902
Weakest	Adjusted Tax Base	\$89,957	\$124,092

Communication: 79.09

This component assesses the availability and quality of communication infrastructure, such as broadband internet access, which is crucial for businesses and residents to stay connected and resilient during disruptions. Davidson County's performance on this dimension is strong when compared to other North Carolina counties, ranking 10th in the state.

Notable variables for Davidson County within this dimension include:

VARIABLE STRENGTH	FACTOR	DAVIDSON COUNTY VALUE	NC COUNTY AVERAGE VALUE
--------------------------	---------------	------------------------------	--------------------------------

Top 10 in NC, Strongest	In-Vehicle High-Speed Mobile Data Availability	0.71	0.37
Top 10 in NC, 2nd Strongest	Local High-Speed Mobile Data Availability	0.91	0.66
Weakest	Percentage of Population without Smartphones	13.84%	17.22%

Housing & Transportation: 81.23

This component evaluates the accessibility and affordability of housing, as well as the availability of reliable transportation options, which are essential for a resilient workforce and economy. Davidson County's performance on this dimension is strong when compared to other North Carolina counties, ranking 13th in the state.

Notable variables for Davidson County within this dimension include:

VARIABLE STRENGTH	FACTOR	DAVIDSON COUNTY VALUE	NC COUNTY AVERAGE VALUE
Top 10 in NC, Strongest	Ratio of Average Estimated Home Value to Median Income	2.72	13.67
2nd Strongest	Percentage of Owner-Occupied Homes	65.51%	57.87%
Weakest	Percentage of Homes Built Before 1980	43.92%	40.9%

Healthcare: 16.66

The healthcare component examines the availability and quality of healthcare facilities, services, and professionals, which are critical for maintaining a healthy and productive workforce. Davidson County's performance on this dimension is fairly weak when compared to other North Carolina counties, ranking 86th in the state.

Notable variables for Davidson County within this dimension include:

VARIABLE STRENGTH	FACTOR	DAVIDSON COUNTY VALUE	NC COUNTY AVERAGE VALUE
Strongest	Nurses per 10,000 Residents	240.93	262.64
2nd Strongest	Mental Health Professionals per 10,000 Residents	4.41	6.6
Weakest	Opioid Deaths per 100,000 Residents	53.7	38.73

Community Cohesion: 61.9

This component looks at the strength of social networks, community engagement, and the ability of residents to work together to address challenges and support one another during times of adversity. Davidson County's performance on this dimension is average when compared to other North Carolina counties, ranking 38th in the state.

Notable variables for Davidson County within this dimension include:

VARIABLE STRENGTH	FACTOR	DAVIDSON COUNTY VALUE	NC COUNTY AVERAGE VALUE
Strongest	Percentage of Inactive Voters	9.52%	11.3%
2nd Strongest	Violent Crimes per 10,000 Residents	1.4	3.07
Weakest	Nonprofits Organizations per 1,000 Residents	1.67	3.17

Socioeconomics: 50.05

This component considers factors such as income levels, poverty rates, and inequality, which can impact a community's ability to withstand and recover from economic shocks. Davidson County's performance on this dimension is average when compared to other North Carolina counties, ranking 38th in the state.

Notable variables for Davidson County within this dimension include:

VARIABLE STRENGTH	FACTOR	DAVIDSON COUNTY VALUE	NC COUNTY AVERAGE VALUE
Strongest	Gini Coefficient (Income Inequality)	0.44	0.46
2nd Strongest	Percentage of Households Spending more than 30% Income on Housing	21.87%	24.53%
Weakest	Population 25+ with at least a Bachelor's Degree	20.47%	24.4%

Education: 35.44

This component evaluates the quality of educational institutions and the educational attainment levels of the local population, which play a crucial role in developing a skilled and adaptable workforce. Davidson County's performance on this dimension is fairly weak when compared to other North Carolina counties, ranking 72nd in the state.

Notable variables for Davidson County within this dimension include:

VARIABLE STRENGTH	FACTOR	DAVIDSON COUNTY VALUE	NC COUNTY AVERAGE VALUE
Strongest	Teacher Attrition Rate	0.11	0.12
2nd Strongest	3rd Grade Reading Proficiency	43.44%	43.1%
Weakest	Postsecondary Enrollment Percentage	18.3%	25.48%

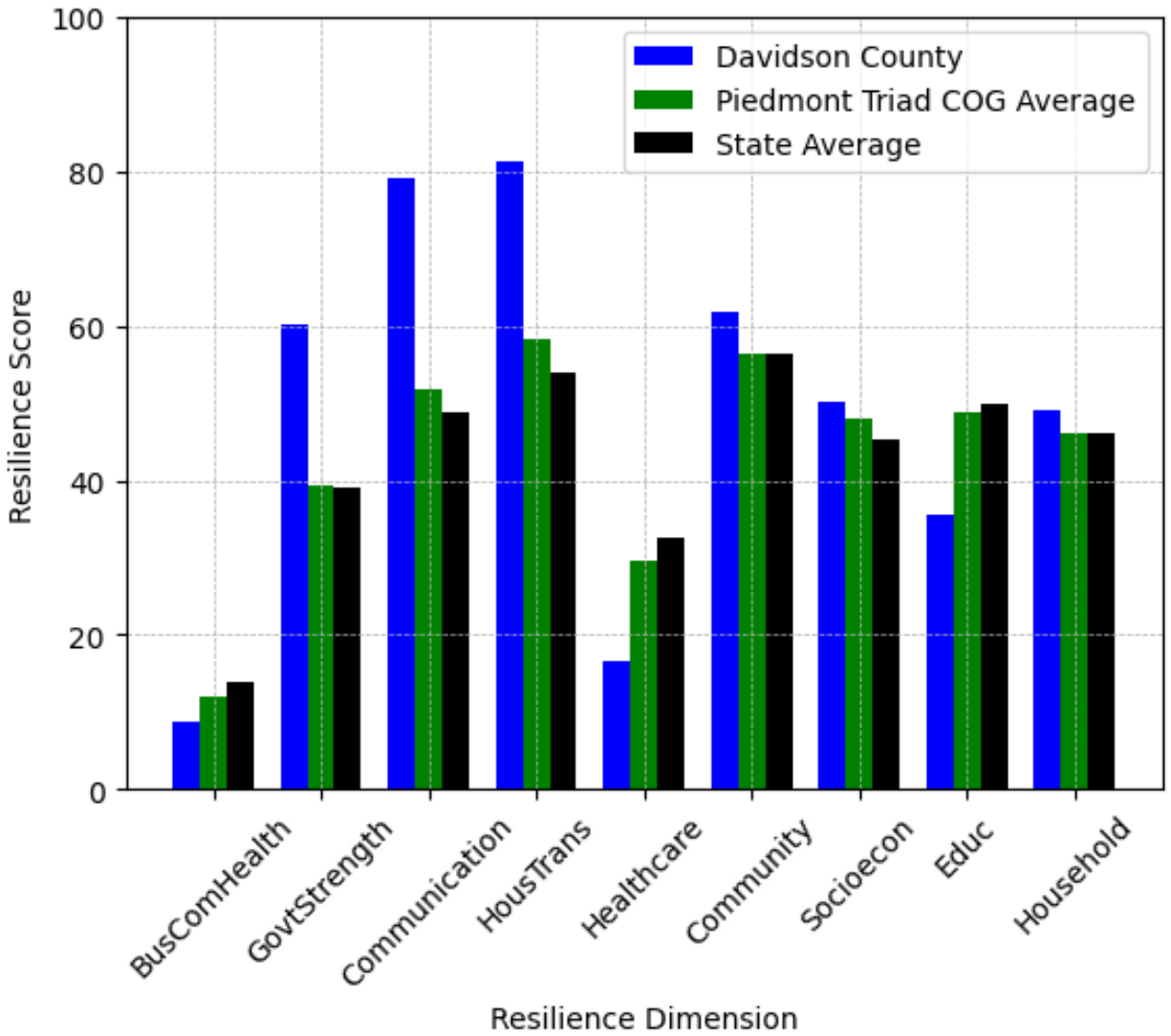
Household Characteristics: 49.01

This component examines factors such as the proportion of single-parent households, age distribution, and the proportion of individuals with disabilities, as these elements can influence a community's resilience and ability to recover from economic disruptions. Davidson County's performance on this dimension is average when compared to other North Carolina counties, ranking 36th in the state.

Notable variables for Davidson County within this dimension include:

VARIABLE STRENGTH	FACTOR	DAVIDSON COUNTY VALUE	NC COUNTY AVERAGE VALUE
Strongest	Percentage of Population with a Disability	15.344%	16.566%
2nd Strongest	Percentage of Population 65 and Older	18.46%	20.53%
Weakest	Percentage of Population 17 and Younger	21.67%	20.37%

Davidson County's Resilience Dimension Scores Over Time As Compared to the Region and State Averages



Note: Resilience Scores are normalized from 1 to 100 with the most resilient county scoring 100. The Resilience Score is determined based on a county's performance relative to NC's other 99 counties.

Notable Trends in Resilience Indicators, 2017-2022

NOTE: The key trends in the this section are identified based on change rates of at least .15 standard deviations over at least 5 years. Variables are positively oriented such that a positive trend indicates improved performance (e.g., 'improvement' in property crime is a lower crime rate, while 'decline' in property crime indicates a higher crime rate).

Trends in the Business Community Health dimension:

Total Employment Level: **2,642** (5-year change rate = **6.07%**, from 43,521 to 46,163)

↑ Change in rank from 21 to 20 in NC

Average Weekly Wages: **185 dollars** (5-year change rate = **23.01%**, from 804 to 989)

↓ Change in rank from 22 to 28 in NC

Real GDP in Current Dollars: **138,346 dollars** (5-year change rate = **2.84%**, from 4,875,609 to 5,013,955)

↑ Change in rank from 23 to 22 in NC

Trends in the County Government Fiscal Strength dimension:

Adjusted Tax Base: **12,113 dollars** (5-year change rate = **15.56%**, from 77,844 to 89,957)

↓ Change in rank from 61 to 66 in NC

County Sales Tax: **15,430,252 dollars** (5-year change rate = **56.75%**, from 27,191,068 to 42,621,320)

↓ Change in rank from 18 to 19 in NC

Trends in the Housing & Transportation dimension:

Ratio of Average Estimated Home Value to Median Income : **0.64** (5-year change rate = **30.75%**, from 2.08 to 2.72)

↑ Change in rank from 11 to 10 in NC

Average Available Rent Money less the Average HUD Fair Market Rent: **283.7 dollars** (5-year change rate = **41.28%**, from 687.3 to 971)

↓ Change in rank from 16 to 27 in NC

Trends in the Healthcare dimension:

Opioid Deaths per 100,000 Residents: **19.9** (5-year change rate = **58.88%**, from 33.8 to 53.7)

↓ Change in rank from 79 to 87 in NC

Nurses per 10,000 Residents: **-3.56** (5-year change rate = **-1.46%**, from 244.49 to 240.93)

↑ Change in rank from 33 to 31 in NC

Physicians per 10,000 Residents: **1.44** (5-year change rate = **21.49%**, from 6.7 to 8.14)

↑ Change in rank from 77 to 69 in NC

Mental Health Professionals per 10,000 Residents: **-0.84** (5-year change rate = **-16%**, from 5.25 to 4.41)

↓ Change in rank from 51 to 66 in NC

Trends in the Community Cohesion dimension:

Violent Crimes per 10,000 Residents: **-0.56** (4-year change rate = **-28.58%**, from 1.95 to 1.4)

↑ Change in rank from 45 to 23 in NC

Property Crimes per 10,000 Residents: **-4.11** (4-year change rate = **-22.36%**, from 18.36 to 14.26)

↑ Change in rank from 48 to 44 in NC

Nonprofits Organizations per 1,000 Residents: **0.31** (5-year change rate = **22.48%**, from 1.36 to 1.67)

↑ Change in rank from 90 to 82 in NC

Trends in the Socioeconomics dimension:

Unemployment Rate (Q4): **-0.5 percent** (5-year change rate = **-13.33%**, from 4 to 3.5)

↓ Change in rank from 32 to 38 in NC

Median Household Income: **15,100 dollars** (5-year change rate = **26.92%**, from 56,100 to 71,200)

↓ Change in rank from 36 to 42 in NC

Trends in the Education dimension:

Graduation Percentage: **1.27 percent** (5-year change rate = **1.48%**, from 85.57 to 86.83)

↓ Change in rank from 63 to 68 in NC

Dropout Rate: **-0.68 percent** (5-year change rate = **-24.03%**, from 2.83 to 2.15)

↑ Change in rank from 75 to 73 in NC

Student to Teacher Ratio: **-1** (4-year change rate = **-4.23%**, from 16 to 15)

↑ Change in rank from 81 to 74 in NC

3rd Grade Reading Proficiency: **-11.26 percent** (5-year change rate = **-20.58%**, from 54.7 to 43.44)

↓ Change in rank from 47 to 51 in NC

Data Advisements:

- Availability of Broadband Services is not available for 2022 and was excluded from calculating this county's dimension and resilience score.
- Adoption Rate of Broadband Services is not available for 2022 and was excluded from calculating this county's dimension and resilience score.