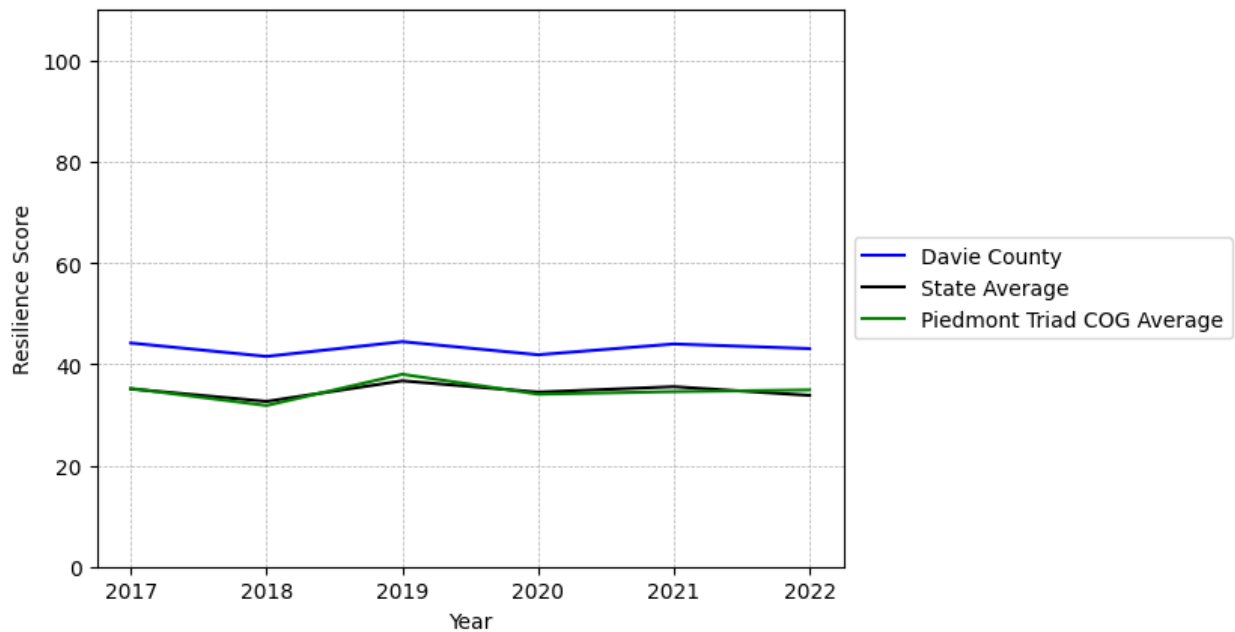


Davie County Summary

Resilience Score: 43.08

In 2022, Davie County achieved a Resilience Score of 43.08, which is average as compared to the North Carolina State average.

**Davie County's Resilience Score Over Time
As Compared to the Region and State Averages**



Note: Resilience Scores are normalized from 1 to 100 with the most resilient county scoring 100. The Resilience Score is determined based on a county's performance relative to NC's other 99 counties.

Davie County's Resilience Score is comprised of 9 distinct dimensions of resilience. Below are Davie County's scores for 2022 on those 9 dimensions, and their rank relative to other North Carolina counties.

Business Community Health: 9.79

This component examines the strength and diversity of the local business community, including factors such as the number of businesses, employment levels, and industry diversity. Davie County's performance on this dimension is average when compared to other North Carolina counties, ranking 59th in the state.

Notable variables for Davie County within this dimension include:

VARIABLE STRENGTH	FACTOR	DAVIE COUNTY VALUE	NC COUNTY AVERAGE VALUE
Strongest	Percentage of Companies in Science, Engineering, & Technology Industries	7.29%	6.13%
2nd Strongest	Average Weekly Wages	\$961	\$951
Weakest	Ratio of Available Child Care Slots to Number of Children under Five	0.4	0.59

County Government Fiscal Strength: 22.33

This component looks at the financial health of local governments, including their ability to generate revenue, manage debt, and maintain adequate reserves to weather economic downturns. Davie County's performance on this dimension is fairly weak when compared to other North Carolina counties, ranking 85th in the state.

Notable variables for Davie County within this dimension include:

VARIABLE STRENGTH	FACTOR	DAVIE COUNTY VALUE	NC COUNTY AVERAGE VALUE
Strongest	Capital Assets Condition Ratio of County Government	0.57	0.51
2nd Strongest	Dependency Ratio of County Government	0.13	0.16
Bottom 10 in NC	Quick Ratio of County Government	4.84	16.4
Bottom 10 in NC, Weakest	Solvency Ratio of County Government	15.59	46.7

Communication: 80.11

This component assesses the availability and quality of communication infrastructure, such as broadband internet access, which is crucial for businesses and residents to stay connected and

resilient during disruptions. Davie County's performance on this dimension is strong when compared to other North Carolina counties, ranking 9th in the state.

Notable variables for Davie County within this dimension include:

VARIABLE STRENGTH	FACTOR	DAVIE COUNTY VALUE	NC COUNTY AVERAGE VALUE
Top 10 in NC, Strongest	Broadband Availability	0.92	0.6
2nd Strongest	In-Vehicle High-Speed Mobile Data Availability	0.6	0.37
Weakest	Percentage of Population without Smartphones	14.05%	17.22%

Housing & Transportation: 81.4

This component evaluates the accessibility and affordability of housing, as well as the availability of reliable transportation options, which are essential for a resilient workforce and economy. Davie County's performance on this dimension is strong when compared to other North Carolina counties, ranking 12th in the state.

Notable variables for Davie County within this dimension include:

VARIABLE STRENGTH	FACTOR	DAVIE COUNTY VALUE	NC COUNTY AVERAGE VALUE
Top 10 in NC, Strongest	Percentage of Owner-Occupied Homes	71.93%	57.87%
2nd Strongest	Average Available Rent Money less the Average HUD Fair Market Rent	\$1,051.2	\$799.87
Weakest	Ratio of Average Estimated Home Value to Median Income	13.32	13.67

Healthcare: 25.21

The healthcare component examines the availability and quality of healthcare facilities, services, and professionals, which are critical for maintaining a healthy and productive workforce. Davie County's performance on this dimension is average when compared to other North Carolina counties, ranking 53rd in the state.

Notable variables for Davie County within this dimension include:

VARIABLE	FACTOR	DAVIE COUNTY	NC COUNTY
----------	--------	--------------	-----------

STRENGTH		VALUE	AVERAGE VALUE
Strongest	Mental Health Professionals per 10,000 Residents	9.6	6.6
2nd Strongest	Physicians per 10,000 Residents	12.11	16.05
Weakest	Opioid Deaths per 100,000 Residents	46.7	38.73

Community Cohesion: 64.1

This component looks at the strength of social networks, community engagement, and the ability of residents to work together to address challenges and support one another during times of adversity. Davie County's performance on this dimension is average when compared to other North Carolina counties, ranking 34th in the state.

Notable variables for Davie County within this dimension include:

VARIABLE STRENGTH	FACTOR	DAVIE COUNTY VALUE	NC COUNTY AVERAGE VALUE
Top 10 in NC, Strongest	Percentage of Inactive Voters	8.42%	11.3%
2nd Strongest	Yearly Population Change Percentage	1.315%	0.906%
Weakest	Property Crimes per 10,000 Residents	18.33	15.74

Socioeconomics: 68.24

This component considers factors such as income levels, poverty rates, and inequality, which can impact a community's ability to withstand and recover from economic shocks. Davie County's performance on this dimension is strong when compared to other North Carolina counties, ranking 16th in the state.

Notable variables for Davie County within this dimension include:

VARIABLE STRENGTH	FACTOR	DAVIE COUNTY VALUE	NC COUNTY AVERAGE VALUE
Strongest	Gini Coefficient (Income Inequality)	0.42	0.46
2nd Strongest	Percentage of Households Spending more than 30% Income on Housing	19%	24.53%
Weakest	Percentage of Population	7.26%	9.05%

without a High School
Diploma

Education: 48.25

This component evaluates the quality of educational institutions and the educational attainment levels of the local population, which play a crucial role in developing a skilled and adaptable workforce. Davie County's performance on this dimension is average when compared to other North Carolina counties, ranking 48th in the state.

Notable variables for Davie County within this dimension include:

VARIABLE STRENGTH	FACTOR	DAVIE COUNTY VALUE	NC COUNTY AVERAGE VALUE
Strongest	3rd Grade Reading Proficiency	52.7%	43.1%
2nd Strongest	Local LEA Financial Resources (per ADM)	\$7,685	\$8,683
Weakest	Postsecondary Enrollment Percentage	21.22%	25.48%

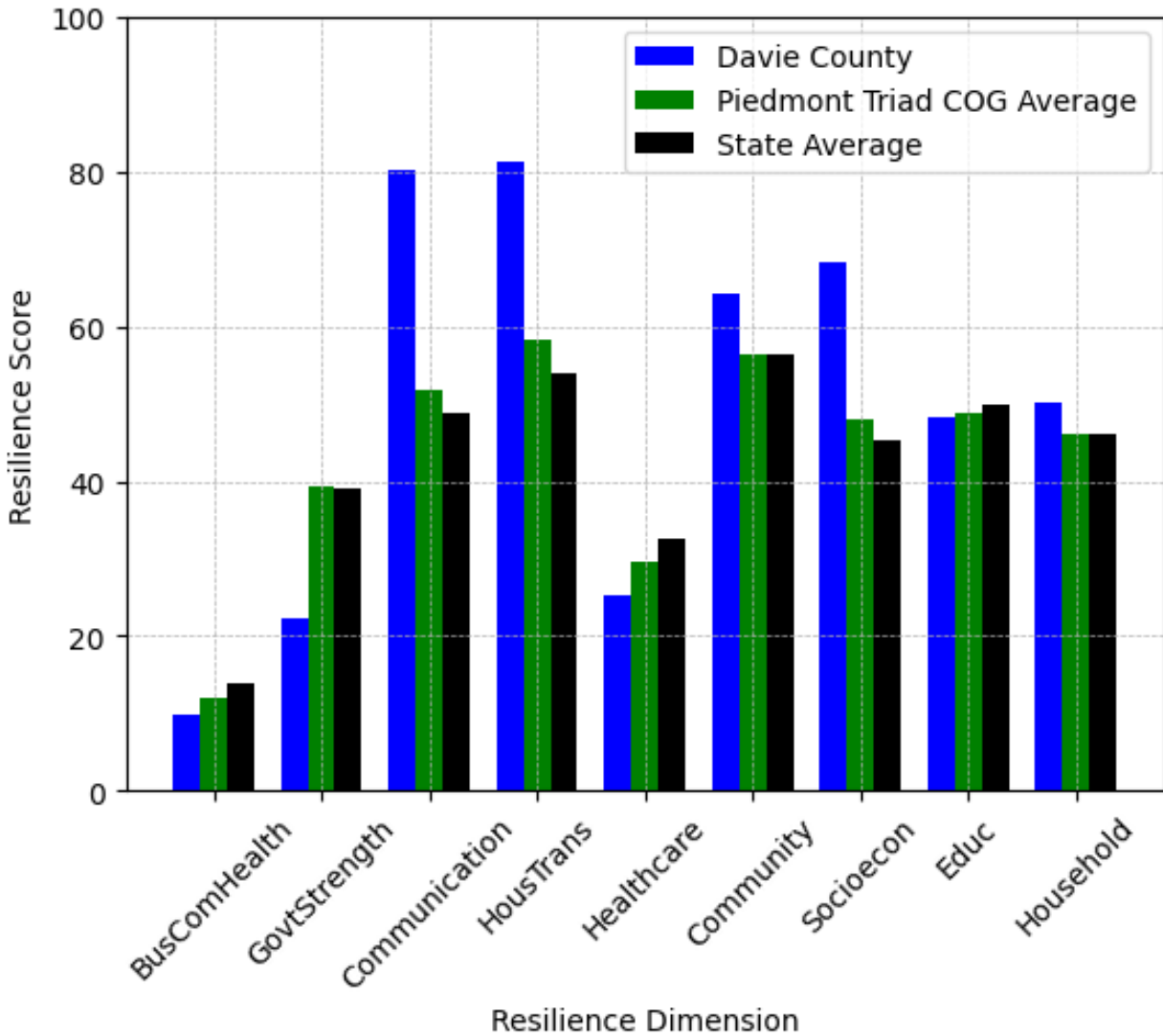
Household Characteristics: 50.21

This component examines factors such as the proportion of single-parent households, age distribution, and the proportion of individuals with disabilities, as these elements can influence a community's resilience and ability to recover from economic disruptions. Davie County's performance on this dimension is average when compared to other North Carolina counties, ranking 28th in the state.

Notable variables for Davie County within this dimension include:

VARIABLE STRENGTH	FACTOR	DAVIE COUNTY VALUE	NC COUNTY AVERAGE VALUE
Top 10 in NC, Strongest	Percentage of Single Parent Households	21.242%	36.132%
2nd Strongest	Percentage of Population with Limited English Proficiency	1.132%	1.454%
Weakest	Percentage of Population with a Disability	18.129%	16.566%

Davie County's Resilience Dimension Scores Over Time As Compared to the Region and State Averages



Note: Resilience Scores are normalized from 1 to 100 with the most resilient county scoring 100. The Resilience Score is determined based on a county's performance relative to NC's other 99 counties.

Notable Trends in Resilience Indicators, 2017-2022

NOTE: The key trends in the this section are identified based on change rates of at least .15 standard deviations over at least 5 years. Variables are positively oriented such that a positive trend indicates improved performance (e.g., 'improvement' in property crime is a lower crime rate, while 'decline' in property crime indicates a higher crime rate).

Trends in the Business Community Health dimension:

Total Employment Level: **625** (5-year change rate = **4.85%**, from 12,897 to 13,523)

↓ Change in rank from 59 to 61 in NC

Average Weekly Wages: **256 dollars** (5-year change rate = **36.31%**, from 705 to 961)

↑ Change in rank from 59 to 37 in NC

Real GDP in Current Dollars: **-13,071 dollars** (5-year change rate = **-0.91%**, from 1,429,609 to 1,416,538)

↑ Change in rank from 63 to 62 in NC

Trends in the County Government Fiscal Strength dimension:

Adjusted Tax Base: **16,626 dollars** (5-year change rate = **16.94%**, from 98,120 to 114,746)

↓ Change in rank from 45 to 47 in NC

County Sales Tax: **4,152,628 dollars** (5-year change rate = **53.68%**, from 7,736,364 to 11,888,993)

→ No change in rank

Trends in the Housing & Transportation dimension:

Ratio of Average Estimated Home Value to Median Income : **2.63** (5-year change rate = **24.57%**, from 10.7 to 13.32)

↑ Change in rank from 71 to 70 in NC

Average Available Rent Money less the Average HUD Fair Market Rent: **474.3 dollars** (5-year change rate = **82.22%**, from 576.9 to 1,051.2)

↑ Change in rank from 36 to 20 in NC

Trends in the Healthcare dimension:

Opioid Deaths per 100,000 Residents: **27.9** (5-year change rate = **148.4%**, from 18.8 to 46.7)

↓ Change in rank from 35 to 74 in NC

Nurses per 10,000 Residents: **30.58** (5-year change rate = **26.79%**, from 114.16 to 144.74)

↑ Change in rank from 69 to 57 in NC

Physicians per 10,000 Residents: **3.77** (5-year change rate = **45.2%**, from 8.34 to 12.11)

↑ Change in rank from 68 to 51 in NC

Mental Health Professionals per 10,000 Residents: **2.93** (5-year change rate = **43.93%**, from 6.67 to 9.6)

↑ Change in rank from 33 to 15 in NC

Trends in the Community Cohesion dimension:

Violent Crimes per 10,000 Residents: **0.97** (4-year change rate = **43.01%**, from 2.26 to 3.23)

↓ Change in rank from 51 to 64 in NC

Property Crimes per 10,000 Residents: **3.2** (4-year change rate = **21.16%**, from 15.13 to 18.33)

↓ Change in rank from 34 to 68 in NC

Nonprofits Organizations per 1,000 Residents: **0.57** (5-year change rate = **18.2%**, from 3.12 to 3.69)

↑ Change in rank from 36 to 33 in NC

Trends in the Socioeconomics dimension:

Unemployment Rate (Q4): **-0.5 percent** (5-year change rate = **-13.91%**, from 3.8 to 3.3)

↓ Change in rank from 17 to 22 in NC

Median Household Income: **20,500 dollars** (5-year change rate = **36.03%**, from 56,900 to 77,400)

↑ Change in rank from 31 to 28 in NC

Trends in the Education dimension:

Graduation Percentage: **0.8 percent** (5-year change rate = **0.91%**, from 88.3 to 89.1)

→ No change in rank

Dropout Rate: **-1.38 percent** (5-year change rate = **-43.1%**, from 3.2 to 1.82)

↑ Change in rank from 84 to 61 in NC

3rd Grade Reading Proficiency: **-11 percent** (5-year change rate = **-17.27%**, from 63.7 to 52.7)

↓ Change in rank from 13 to 19 in NC

Data Advisements:

- Availability of Broadband Services is not available for 2022 and was excluded from calculating this county's dimension and resilience score.
- Adoption Rate of Broadband Services is not available for 2022 and was excluded from calculating this county's dimension and resilience score.