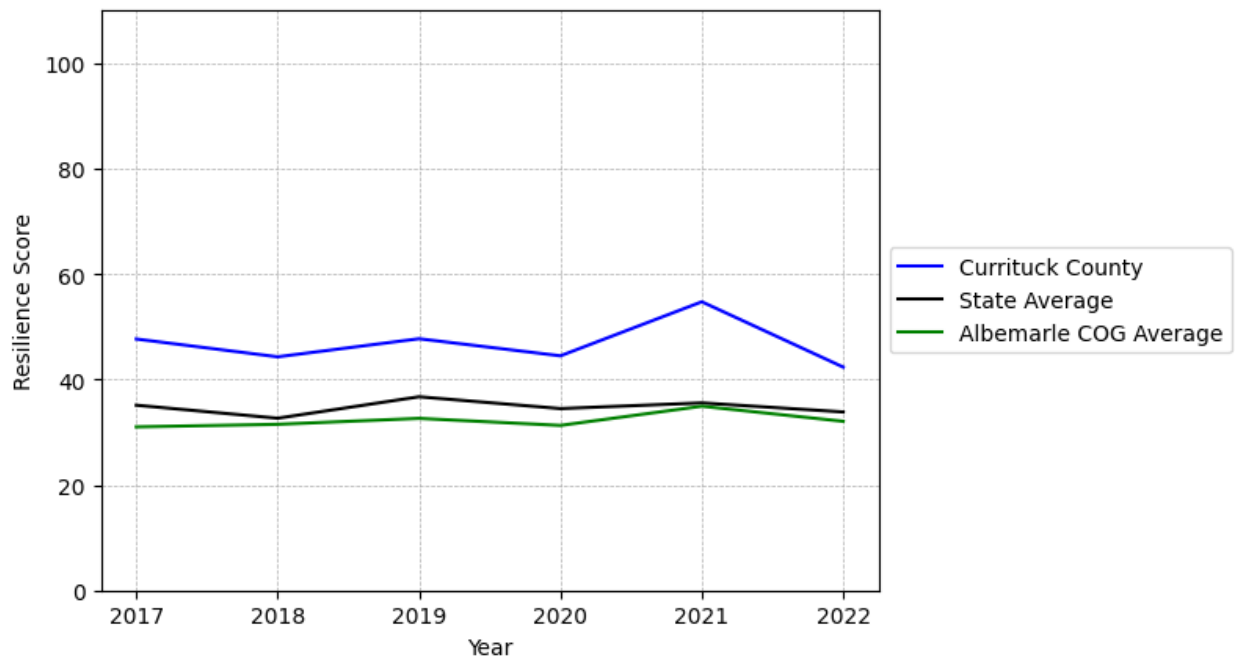


Currituck County Summary

Resilience Score: 42.34

In 2022, Currituck County achieved a Resilience Score of 42.34, which is average as compared to the North Carolina State average.

**Currituck County's Resilience Score Over Time
As Compared to the Region and State Averages**



Note: Resilience Scores are normalized from 1 to 100 with the most resilient county scoring 100. The Resilience Score is determined based on a county's performance relative to NC's other 99 counties.

Currituck County's Resilience Score is comprised of 9 distinct dimensions of resilience. Below are Currituck County's scores for 2022 on those 9 dimensions, and their rank relative to other North Carolina counties.

Business Community Health: 3.21

This component examines the strength and diversity of the local business community, including factors such as the number of businesses, employment levels, and industry diversity. Currituck County's performance on this dimension is fairly weak when compared to other North Carolina counties, ranking 98th in the state.

Notable variables for Currituck County within this dimension include:

VARIABLE STRENGTH	FACTOR	CURRITUCK COUNTY VALUE	NC COUNTY AVERAGE VALUE
Strongest	Percentage of Companies in Science, Engineering, & Technology Industries	7.09%	6.13%
2nd Strongest	Science, Engineering, & Technology Industries Employment Percentage	1.42%	1.79%
Bottom 10 in NC, Weakest	Ratio of Available Child Care Slots to Number of Children under Five	0.22	0.59

County Government Fiscal Strength: 59.71

This component looks at the financial health of local governments, including their ability to generate revenue, manage debt, and maintain adequate reserves to weather economic downturns. Currituck County's performance on this dimension is fairly strong when compared to other North Carolina counties, ranking 19th in the state.

Notable variables for Currituck County within this dimension include:

VARIABLE STRENGTH	FACTOR	CURRITUCK COUNTY VALUE	NC COUNTY AVERAGE VALUE
Top 10 in NC, Strongest	Dependency Ratio of County Government	0.06	0.16
Top 10 in NC, 2nd Strongest	Adjusted Tax Base	\$258,837	\$124,092
Weakest	Operations Ratio of County Government	1.05	1.11

Communication: 47.06

This component assesses the availability and quality of communication infrastructure, such as broadband internet access, which is crucial for businesses and residents to stay connected and

resilient during disruptions. Currituck County's performance on this dimension is average when compared to other North Carolina counties, ranking 57th in the state.

Notable variables for Currituck County within this dimension include:

VARIABLE STRENGTH	FACTOR	CURRITUCK COUNTY VALUE	NC COUNTY AVERAGE VALUE
Top 10 in NC, Strongest	Percentage of Population without Smartphones	9.84%	17.22%
2nd Strongest	Broadband Availability	0.59	0.6
Weakest	Local High-Speed Mobile Data Availability	0.41	0.66

Housing & Transportation: 65.47

This component evaluates the accessibility and affordability of housing, as well as the availability of reliable transportation options, which are essential for a resilient workforce and economy.

Currituck County's performance on this dimension is average when compared to other North Carolina counties, ranking 42nd in the state.

Notable variables for Currituck County within this dimension include:

VARIABLE STRENGTH	FACTOR	CURRITUCK COUNTY VALUE	NC COUNTY AVERAGE VALUE
Top 10 in NC, Strongest	Percentage of Homes Built Before 1980	18.76%	40.9%
Top 10 in NC, 2nd Strongest	Percentage of Population without Vehicles	1.72%	5.75%
Bottom 10 in NC, Weakest	Percentage of People with Commute Times Over 45 Minutes	36.16%	16.69%

Healthcare: 17.25

The healthcare component examines the availability and quality of healthcare facilities, services, and professionals, which are critical for maintaining a healthy and productive workforce. Currituck County's performance on this dimension is fairly weak when compared to other North Carolina counties, ranking 83rd in the state.

Notable variables for Currituck County within this dimension include:

VARIABLE STRENGTH	FACTOR	CURRITUCK COUNTY VALUE	NC COUNTY AVERAGE VALUE
-------------------	--------	------------------------	-------------------------

Strongest	Opioid Deaths per 100,000 Residents	21.6	38.73
2nd Strongest	Nursing Home Beds per 1,000 Residents of Age 65+	18.78	27.53
Bottom 10 in NC	Nurses per 10,000 Residents	53.56	262.64
Bottom 10 in NC, Weakest	Physicians per 10,000 Residents	3.24	16.05

Community Cohesion: 74.16

This component looks at the strength of social networks, community engagement, and the ability of residents to work together to address challenges and support one another during times of adversity. Currituck County's performance on this dimension is strong when compared to other North Carolina counties, ranking 15th in the state.

Notable variables for Currituck County within this dimension include:

VARIABLE STRENGTH	FACTOR	CURRITUCK COUNTY VALUE	NC COUNTY AVERAGE VALUE
Top 10 in NC, Strongest	Yearly Population Change Percentage	4.863%	0.906%
2nd Strongest	Property Crimes per 10,000 Residents	8.63	15.74
Weakest	Percentage of Inactive Voters	13%	11.3%

Socioeconomics: 77.78

This component considers factors such as income levels, poverty rates, and inequality, which can impact a community's ability to withstand and recover from economic shocks. Currituck County's performance on this dimension is strong when compared to other North Carolina counties, ranking 8th in the state.

Notable variables for Currituck County within this dimension include:

VARIABLE STRENGTH	FACTOR	CURRITUCK COUNTY VALUE	NC COUNTY AVERAGE VALUE
Top 10 in NC, Strongest	Total Percentage of Population Below 150% Poverty Line	13.81%	25.93%
Top 10 in NC, 2nd Strongest	Gini Coefficient (Income Inequality)	0.4	0.46

Top 10 in NC	Percentage of Population without a High School Diploma	5.12%	9.05%
Weakest	Percentage of Population without Health Insurance	11.17%	11.23%

Education: 39.93

This component evaluates the quality of educational institutions and the educational attainment levels of the local population, which play a crucial role in developing a skilled and adaptable workforce. Currituck County's performance on this dimension is average when compared to other North Carolina counties, ranking 65th in the state.

Notable variables for Currituck County within this dimension include:

VARIABLE STRENGTH	FACTOR	CURRITUCK COUNTY VALUE	NC COUNTY AVERAGE VALUE
Strongest	Local LEA Financial Resources (per ADM)	\$16,215	\$8,683
2nd Strongest	Postsecondary Enrollment Percentage	27.46%	25.48%
Weakest	Teacher Attrition Rate	0.17	0.12

Household Characteristics: 64.59

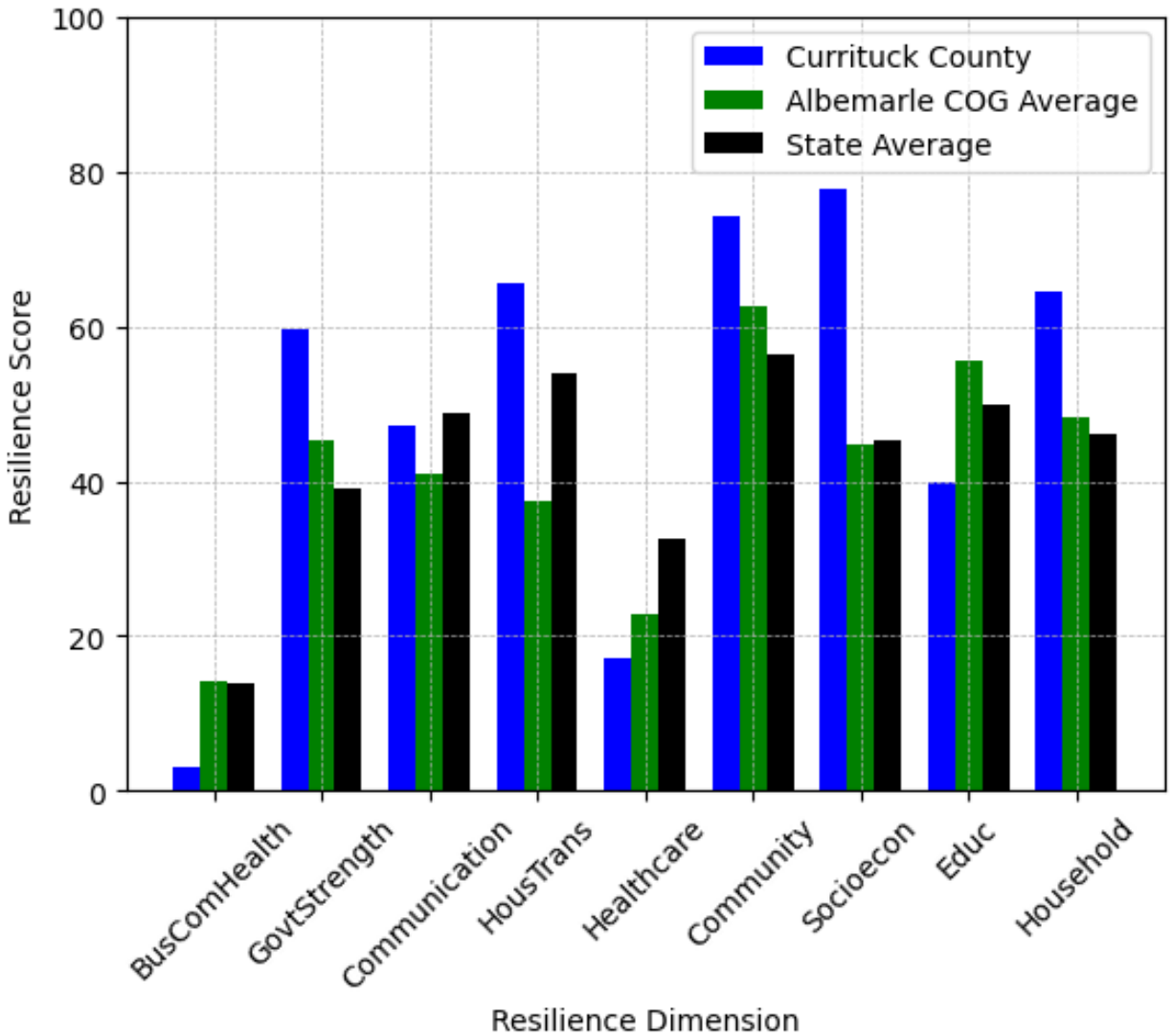
This component examines factors such as the proportion of single-parent households, age distribution, and the proportion of individuals with disabilities, as these elements can influence a community's resilience and ability to recover from economic disruptions. Currituck County's performance on this dimension is strong when compared to other North Carolina counties, ranking 5th in the state.

Notable variables for Currituck County within this dimension include:

VARIABLE STRENGTH	FACTOR	CURRITUCK COUNTY VALUE	NC COUNTY AVERAGE VALUE
Top 10 in NC, Strongest	Percentage of Population with a Disability	11.666%	16.566%
2nd Strongest	Percentage of Population with Limited English Proficiency	0.388%	1.454%
Weakest	Percentage of Population 17 and Younger	22.16%	20.37%



Currituck County's Resilience Dimension Scores Over Time As Compared to the Region and State Averages



Note: Resilience Scores are normalized from 1 to 100 with the most resilient county scoring 100. The Resilience Score is determined based on a county's performance relative to NC's other 99 counties.

Notable Trends in Resilience Indicators, 2017-2022

NOTE: The key trends in the this section are identified based on change rates of at least .15 standard deviations over at least 5 years. Variables are positively oriented such that a positive trend indicates improved performance (e.g., 'improvement' in property crime is a lower crime rate, while 'decline' in property crime indicates a higher crime rate).

Trends in the Business Community Health dimension:

Total Employment Level: **1,010** (5-year change rate = **15.91%**, from 6,352 to 7,362)

↑ Change in rank from 79 to 75 in NC

Average Weekly Wages: **117 dollars** (5-year change rate = **16.12%**, from 726 to 843)

↓ Change in rank from 45 to 89 in NC

Real GDP in Current Dollars: **95,922 dollars** (5-year change rate = **13.17%**, from 728,212 to 824,134)

↑ Change in rank from 76 to 74 in NC

Trends in the County Government Fiscal Strength dimension:

Adjusted Tax Base: **19,489 dollars** (5-year change rate = **8.14%**, from 239,348 to 258,837)

↓ Change in rank from 2 to 4 in NC

County Sales Tax: **7,233,128 dollars** (5-year change rate = **78.49%**, from 9,215,873 to 16,449,001)

↑ Change in rank from 54 to 49 in NC

Trends in the Housing & Transportation dimension:

Ratio of Average Estimated Home Value to Median Income : **3.24** (5-year change rate = **12.95%**, from 25.04 to 28.28)

↑ Change in rank from 91 to 85 in NC

Average Available Rent Money less the Average HUD Fair Market Rent: **438.3 dollars** (5-year change rate = **85.04%**, from 515.4 to 953.7)

↑ Change in rank from 51 to 30 in NC

Trends in the Healthcare dimension:

Opioid Deaths per 100,000 Residents: **-12.6** (5-year change rate = **-36.84%**, from 34.2 to 21.6)

↑ Change in rank from 81 to 14 in NC

Nurses per 10,000 Residents: **-13.84** (5-year change rate = **-20.53%**, from 67.4 to 53.56)

↓ Change in rank from 90 to 93 in NC

Physicians per 10,000 Residents: **-0.6** (5-year change rate = **-15.62%**, from 3.84 to 3.24)

↓ Change in rank from 89 to 93 in NC

Trends in the Community Cohesion dimension:

Violent Crimes per 10,000 Residents: **0.42** (4-year change rate = **24.78%**, from 1.69 to 2.11)

↓ Change in rank from 36 to 40 in NC

Property Crimes per 10,000 Residents: **-3.39** (4-year change rate = **-28.19%**, from 12.02 to 8.63)

↑ Change in rank from 18 to 13 in NC

Trends in the Socioeconomics dimension:

Unemployment Rate (Q4): **-0.6 percent** (5-year change rate = **-15.25%**, from 3.9 to 3.3)

→ No change in rank

Median Household Income: **20,500 dollars** (5-year change rate = **28.08%**, from 73,000 to 93,500)

↓ Change in rank from 8 to 11 in NC

Trends in the Education dimension:

Graduation Percentage: **-7.6 percent** (5-year change rate = **-8.16%**, from 93.1 to 85.5)

↓ Change in rank from 8 to 82 in NC

Dropout Rate: **0.32 percent** (5-year change rate = **18.82%**, from 1.72 to 2.05)

↓ Change in rank from 29 to 67 in NC

3rd Grade Reading Proficiency: **-14.5 percent** (5-year change rate = **-23.39%**, from 62 to 47.5)

↓ Change in rank from 19 to 35 in NC

Data Advisements:

- Availability of Broadband Services is not available for 2022 and was excluded from calculating this county's dimension and resilience score.
- Adoption Rate of Broadband Services is not available for 2022 and was excluded from calculating this county's dimension and resilience score.