

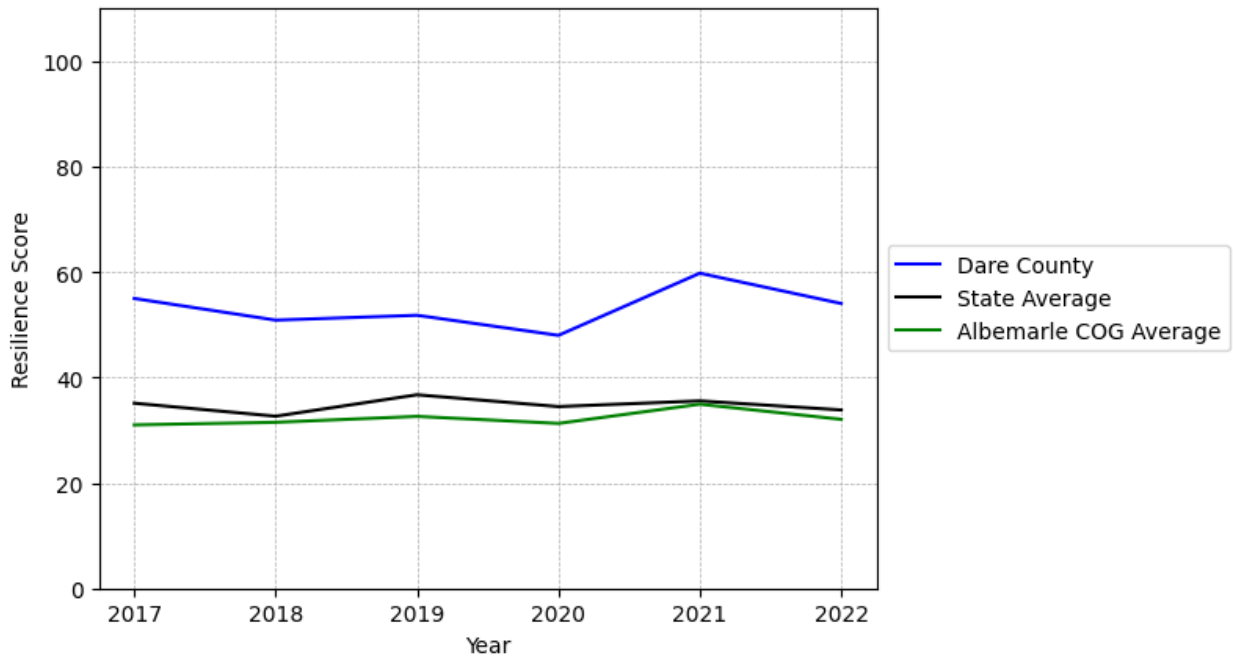
# Dare County Summary

---

**Resilience Score: 54.02**

In 2022, Dare County achieved a Resilience Score of 54.02, which is strong as compared to the North Carolina State average.

**Dare County's Resilience Score Over Time  
As Compared to the Region and State Averages**



*Note: Resilience Scores are normalized from 1 to 100 with the most resilient county scoring 100. The Resilience Score is determined based on a county's performance relative to NC's other 99 counties.*

Dare County's Resilience Score is comprised of 9 distinct dimensions of resilience. Below are Dare County's scores for 2022 on those 9 dimensions, and their rank relative to other North Carolina counties.

### **Business Community Health: 12.74**

This component examines the strength and diversity of the local business community, including factors such as the number of businesses, employment levels, and industry diversity. Dare County's performance on this dimension is average when compared to other North Carolina counties, ranking 42nd in the state.

Notable variables for Dare County within this dimension include:

<b>VARIABLE STRENGTH</b>	<b>FACTOR</b>	<b>DARE COUNTY VALUE</b>	<b>NC COUNTY AVERAGE VALUE</b>
<b>Strongest</b>	Ratio of Available Child Care Slots to Number of Children under Five	0.75	0.59
<b>2nd Strongest</b>	Percentage of Companies in Science, Engineering, & Technology Industries	6.85%	6.13%
<b>Weakest</b>	Private Sector Diversity	0.154	0.28

---

### **County Government Fiscal Strength: 100**

This component looks at the financial health of local governments, including their ability to generate revenue, manage debt, and maintain adequate reserves to weather economic downturns. Dare County's performance on this dimension is strong when compared to other North Carolina counties, ranking 1st in the state.

Notable variables for Dare County within this dimension include:

<b>VARIABLE STRENGTH</b>	<b>FACTOR</b>	<b>DARE COUNTY VALUE</b>	<b>NC COUNTY AVERAGE VALUE</b>
<b>Top 10 in NC, Strongest</b>	Dependency Ratio of County Government	0.06	0.16
<b>Top 10 in NC, 2nd Strongest</b>	Adjusted Tax Base	\$421,174	\$124,092
<b>Top 10 in NC</b>	Operations Ratio of County Government	1.26	1.11
<b>Weakest</b>	Debt Service Ratio of County Government	0.14	0.07

---

### **Communication: 35.45**

This component assesses the availability and quality of communication infrastructure, such as broadband internet access, which is crucial for businesses and residents to stay connected and

resilient during disruptions. Dare County's performance on this dimension is fairly weak when compared to other North Carolina counties, ranking 80th in the state.

Notable variables for Dare County within this dimension include:

VARIABLE STRENGTH	FACTOR	DARE COUNTY VALUE	NC COUNTY AVERAGE VALUE
Top 10 in NC, Strongest	Percentage of Population without Smartphones	9.43%	17.22%
2nd Strongest	Broadband Availability	0.64	0.6
Bottom 10 in NC	In-Vehicle High-Speed Mobile Data Availability	0.05	0.37
Bottom 10 in NC, Weakest	Local High-Speed Mobile Data Availability	0.11	0.66

### Housing & Transportation: 56.38

This component evaluates the accessibility and affordability of housing, as well as the availability of reliable transportation options, which are essential for a resilient workforce and economy. Dare County's performance on this dimension is average when compared to other North Carolina counties, ranking 57th in the state.

Notable variables for Dare County within this dimension include:

VARIABLE STRENGTH	FACTOR	DARE COUNTY VALUE	NC COUNTY AVERAGE VALUE
Top 10 in NC, Strongest	Percentage of Population without Vehicles	1.79%	5.75%
2nd Strongest	Percentage of Homes Built Before 1980	26.79%	40.9%
Bottom 10 in NC, Weakest	Percentage of Owner-Occupied Homes	36.28%	57.87%

### Healthcare: 15.28

The healthcare component examines the availability and quality of healthcare facilities, services, and professionals, which are critical for maintaining a healthy and productive workforce. Dare County's performance on this dimension is fairly weak when compared to other North Carolina counties, ranking 88th in the state.

Notable variables for Dare County within this dimension include:

VARIABLE	FACTOR	DARE COUNTY	NC COUNTY
----------	--------	-------------	-----------

STRENGTH		VALUE	AVERAGE VALUE
<b>Strongest</b>	Physicians per 10,000 Residents	17.13	16.05
<b>2nd Strongest</b>	Nurses per 10,000 Residents	127.04	262.64
<b>Bottom 10 in NC, Weakest</b>	Nursing Home Beds per 1,000 Residents of Age 65+	13.83	27.53

### Community Cohesion: 62.48

This component looks at the strength of social networks, community engagement, and the ability of residents to work together to address challenges and support one another during times of adversity. Dare County's performance on this dimension is average when compared to other North Carolina counties, ranking 37th in the state.

Notable variables for Dare County within this dimension include:

VARIABLE STRENGTH	FACTOR	DARE COUNTY VALUE	NC COUNTY AVERAGE VALUE
<b>Top 10 in NC, Strongest</b>	Nonprofits Organizations per 1,000 Residents	6.1	3.17
<b>2nd Strongest</b>	Violent Crimes per 10,000 Residents	1.29	3.07
<b>Weakest</b>	Percentage of Inactive Voters	14.34%	11.3%

### Socioeconomics: 75.54

This component considers factors such as income levels, poverty rates, and inequality, which can impact a community's ability to withstand and recover from economic shocks. Dare County's performance on this dimension is strong when compared to other North Carolina counties, ranking 10th in the state.

Notable variables for Dare County within this dimension include:

VARIABLE STRENGTH	FACTOR	DARE COUNTY VALUE	NC COUNTY AVERAGE VALUE
<b>Top 10 in NC, Strongest</b>	Percentage of Population without a High School Diploma	3.82%	9.05%
<b>Top 10 in NC, 2nd Strongest</b>	Total Percentage of Population Below 150% Poverty Line	13.17%	25.93%

<b>Top 10 in NC</b>	Gini Coefficient (Income Inequality)	0.42	0.46
<b>Top 10 in NC</b>	Population 25+ with at least a Bachelor's Degree	42.54%	24.4%
<b>Top 10 in NC</b>	Percentage of Households with Income over \$200k	10.24%	5.28%
<b>Weakest</b>	Percentage of Population without Health Insurance	11.56%	11.23%

**Education: 87.83**

This component evaluates the quality of educational institutions and the educational attainment levels of the local population, which play a crucial role in developing a skilled and adaptable workforce. Dare County's performance on this dimension is strong when compared to other North Carolina counties, ranking 2nd in the state.

Notable variables for Dare County within this dimension include:

<b>VARIABLE STRENGTH</b>	<b>FACTOR</b>	<b>DARE COUNTY VALUE</b>	<b>NC COUNTY AVERAGE VALUE</b>
<b>Top 10 in NC, Strongest</b>	Local LEA Financial Resources (per ADM)	\$36,913	\$8,683
<b>Top 10 in NC, 2nd Strongest</b>	Graduation Percentage	94.2%	88.03%
<b>Weakest</b>	Postsecondary Enrollment Percentage	20.19%	25.48%

**Household Characteristics: 64.15**

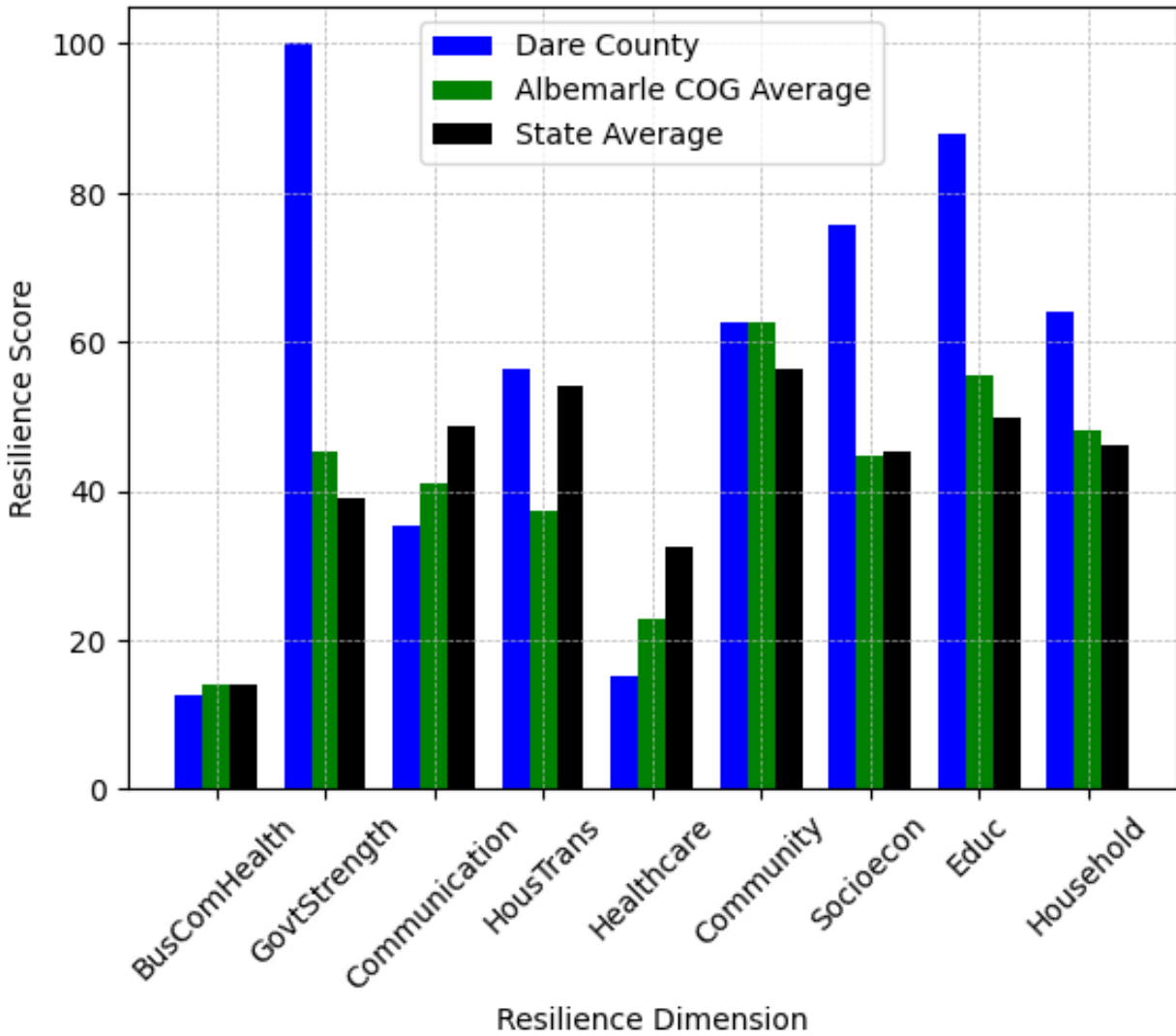
This component examines factors such as the proportion of single-parent households, age distribution, and the proportion of individuals with disabilities, as these elements can influence a community's resilience and ability to recover from economic disruptions. Dare County's performance on this dimension is strong when compared to other North Carolina counties, ranking 6th in the state.

Notable variables for Dare County within this dimension include:

<b>VARIABLE STRENGTH</b>	<b>FACTOR</b>	<b>DARE COUNTY VALUE</b>	<b>NC COUNTY AVERAGE VALUE</b>
<b>Top 10 in NC, Strongest</b>	Percentage of Population with a Disability	10.566%	16.566%
<b>2nd Strongest</b>	Percentage of Population 17 and Younger	18.43%	20.37%
<b>Weakest</b>	Percentage of Population	22.98%	20.53%



## Dare County's Resilience Dimension Scores Over Time As Compared to the Region and State Averages



*Note: Resilience Scores are normalized from 1 to 100 with the most resilient county scoring 100. The Resilience Score is determined based on a county's performance relative to NC's other 99 counties.*

## **Notable Trends in Resilience Indicators, 2017-2022**

*NOTE: The key trends in the this section are identified based on change rates of at least .15 standard deviations over at least 5 years. Variables are positively oriented such that a positive trend indicates improved performance (e.g., 'improvement' in property crime is a lower crime rate, while 'decline' in property crime indicates a higher crime rate).*

### **Trends in the Business Community Health dimension:**

Total Employment Level: **669** (5-year change rate = **3.73%**, from 17,924 to 18,593)

↑ Change in rank from 47 to 45 in NC

Average Weekly Wages: **238 dollars** (5-year change rate = **34.95%**, from 681 to 919)

↑ Change in rank from 78 to 48 in NC

Real GDP in Current Dollars: **305,625 dollars** (5-year change rate = **13.36%**, from 2,286,999 to 2,592,624)

↑ Change in rank from 43 to 38 in NC

### **Trends in the County Government Fiscal Strength dimension:**

Adjusted Tax Base: **42,547 dollars** (5-year change rate = **11.24%**, from 378,627 to 421,174)

↓ Change in rank from 1 to 2 in NC

County Sales Tax: **10,830,342 dollars** (5-year change rate = **57.17%**, from 18,944,518 to 29,774,860)

↓ Change in rank from 28 to 29 in NC

### **Trends in the Housing & Transportation dimension:**

Ratio of Average Estimated Home Value to Median Income : **5.37** (5-year change rate = **28.76%**, from 18.67 to 24.04)

↑ Change in rank from 83 to 82 in NC

Average Available Rent Money less the Average HUD Fair Market Rent: **159.1 dollars** (5-year change rate = **25.02%**, from 635.8 to 794.9)



↓ Change in rank from 23 to 46 in NC

**Trends in the Healthcare dimension:**

Opioid Deaths per 100,000 Residents: **1.6** (5-year change rate = **3.85%**, from 41.6 to 43.2)

↑ Change in rank from 92 to 67 in NC

Nurses per 10,000 Residents: **13.53** (5-year change rate = **11.92%**, from 113.51 to 127.04)

↑ Change in rank from 70 to 65 in NC

Physicians per 10,000 Residents: **-2.63** (5-year change rate = **-13.31%**, from 19.76 to 17.13)

↓ Change in rank from 24 to 31 in NC

Mental Health Professionals per 10,000 Residents: **0.59** (5-year change rate = **16.3%**, from 3.62 to 4.21)

↑ Change in rank from 78 to 72 in NC

**Trends in the Community Cohesion dimension:**

Violent Crimes per 10,000 Residents: **-0.2** (4-year change rate = **-13.2%**, from 1.49 to 1.29)

↑ Change in rank from 25 to 18 in NC

Property Crimes per 10,000 Residents: **-15.46** (4-year change rate = **-51.43%**, from 30.07 to 14.6)

↑ Change in rank from 82 to 48 in NC

**Trends in the Socioeconomics dimension:**

Unemployment Rate (Q4): **-1.3 percent** (5-year change rate = **-24.36%**, from 5.2 to 3.9)

↑ Change in rank from 77 to 64 in NC

Median Household Income: **13,300 dollars** (5-year change rate = **20.27%**, from 65,600 to 78,900)

↓ Change in rank from 14 to 24 in NC

**Trends in the Education dimension:**

Graduation Percentage: **-5.8 percent** (5-year change rate = **-5.8%**, from 100 to 94.2)

↓ Change in rank from 1 to 5 in NC

Dropout Rate: **-0.84 percent** (5-year change rate = **-48.69%**, from 1.73 to 0.89)

↑ Change in rank from 30 to 22 in NC

Student to Teacher Ratio: **-1** (4-year change rate = **-6.31%**, from 13 to 13)

↑ Change in rank from 17 to 14 in NC

3rd Grade Reading Proficiency: **-14.2 percent** (5-year change rate = **-22.02%**, from 64.5 to 50.3)

↓ Change in rank from 9 to 25 in NC

**Data Advisements:**

- Availability of Broadband Services is not available for 2022 and was excluded from calculating this county's dimension and resilience score.
- Adoption Rate of Broadband Services is not available for 2022 and was excluded from calculating this county's dimension and resilience score.