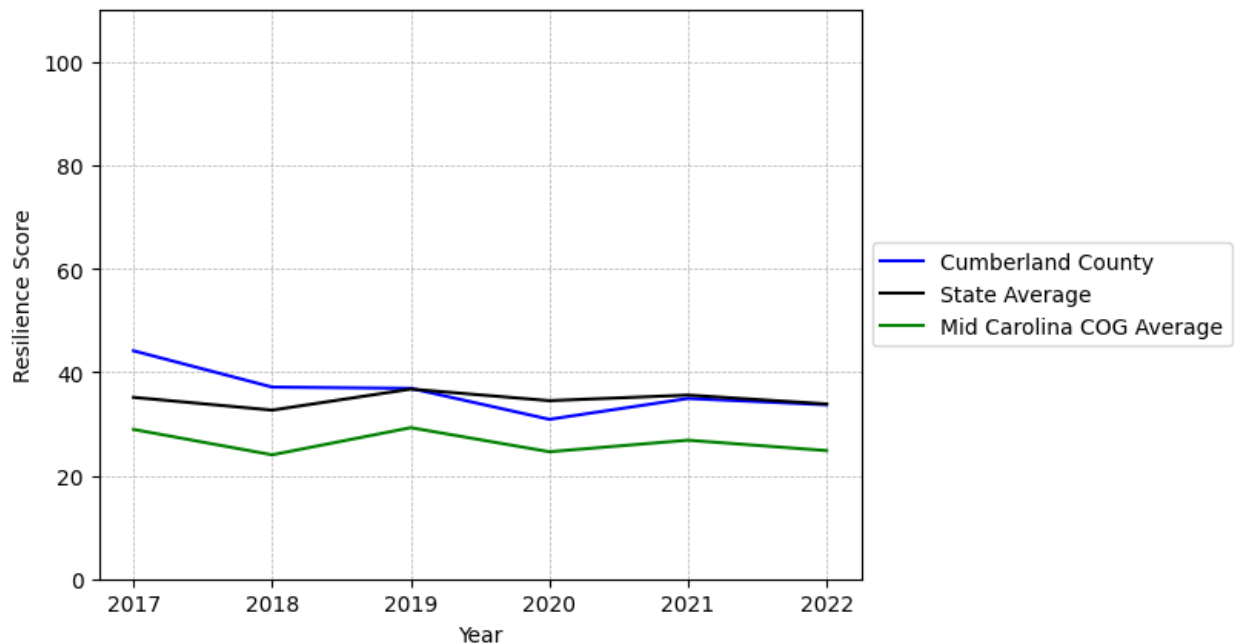


Cumberland County Summary

Resilience Score: 33.69

In 2022, Cumberland County achieved a Resilience Score of 33.69, which is average as compared to the North Carolina State average.

**Cumberland County's Resilience Score Over Time
As Compared to the Region and State Averages**



Note: Resilience Scores are normalized from 1 to 100 with the most resilient county scoring 100. The Resilience Score is determined based on a county's performance relative to NC's other 99 counties.

Cumberland County's Resilience Score is comprised of 9 distinct dimensions of resilience. Below are Cumberland County's scores for 2022 on those 9 dimensions, and their rank relative to other North Carolina counties.

Business Community Health: 21.74

This component examines the strength and diversity of the local business community, including factors such as the number of businesses, employment levels, and industry diversity. Cumberland County's performance on this dimension is average when compared to other North Carolina counties, ranking 13th in the state.

Notable variables for Cumberland County within this dimension include:

VARIABLE STRENGTH	FACTOR	CUMBERLAND COUNTY VALUE	NC COUNTY AVERAGE VALUE
Top 10 in NC, Strongest	Real GDP in Current Dollars	\$17,938,442	\$6,092,555
Top 10 in NC, 2nd Strongest	Total Employment Level	121,533	45,758
Bottom 10 in NC, Weakest	Private Sector Diversity	0.075	0.28

County Government Fiscal Strength: 58.88

This component looks at the financial health of local governments, including their ability to generate revenue, manage debt, and maintain adequate reserves to weather economic downturns. Cumberland County's performance on this dimension is fairly strong when compared to other North Carolina counties, ranking 21st in the state.

Notable variables for Cumberland County within this dimension include:

VARIABLE STRENGTH	FACTOR	CUMBERLAND COUNTY VALUE	NC COUNTY AVERAGE VALUE
Top 10 in NC, Strongest	County Sales Tax	\$87,911,368	\$31,151,902
2nd Strongest	Solvency Ratio of County Government	70.86	46.7
Bottom 10 in NC, Weakest	Adjusted Tax Base	\$72,055	\$124,092

Communication: 70.22

This component assesses the availability and quality of communication infrastructure, such as broadband internet access, which is crucial for businesses and residents to stay connected and resilient during disruptions. Cumberland County's performance on this dimension is fairly strong when compared to other North Carolina counties, ranking 16th in the state.

Notable variables for Cumberland County within this dimension include:

VARIABLE STRENGTH	FACTOR	CUMBERLAND COUNTY VALUE	NC COUNTY AVERAGE VALUE
Strongest	Local High-Speed Mobile Data Availability	0.88	0.66
2nd Strongest	Percentage of Population without Smartphones	11.8%	17.22%
Weakest	In-Vehicle High-Speed Mobile Data Availability	0.45	0.37

Housing & Transportation: 57.07

This component evaluates the accessibility and affordability of housing, as well as the availability of reliable transportation options, which are essential for a resilient workforce and economy.

Cumberland County's performance on this dimension is average when compared to other North Carolina counties, ranking 56th in the state.

Notable variables for Cumberland County within this dimension include:

VARIABLE STRENGTH	FACTOR	CUMBERLAND COUNTY VALUE	NC COUNTY AVERAGE VALUE
Top 10 in NC, Strongest	Ratio of Average Estimated Home Value to Median Income	1.31	13.67
Top 10 in NC, 2nd Strongest	Percentage of People with Commute Times Over 45 Minutes	8.7%	16.69%
Top 10 in NC	Percentage of People Driving Alone to Work	82.68%	86.36%
Bottom 10 in NC	Average Available Rent Money less the Average HUD Fair Market Rent	\$474.8	\$799.87
Bottom 10 in NC, Weakest	Percentage of Owner-Occupied Homes	46.75%	57.87%

Healthcare: 44.69

The healthcare component examines the availability and quality of healthcare facilities, services, and professionals, which are critical for maintaining a healthy and productive workforce.

Cumberland County's performance on this dimension is strong when compared to other North Carolina counties, ranking 11th in the state.

Notable variables for Cumberland County within this dimension include:

VARIABLE	FACTOR	CUMBERLAND	NC COUNTY
----------	--------	------------	-----------

STRENGTH		COUNTY VALUE	AVERAGE VALUE
Top 10 in NC, Strongest	Nurses per 10,000 Residents	1,174.49	262.64
2nd Strongest	Nursing Home Beds per 1,000 Residents of Age 65+	33.56	27.53
Weakest	Opioid Deaths per 100,000 Residents	48	38.73

Community Cohesion: 19.74

This component looks at the strength of social networks, community engagement, and the ability of residents to work together to address challenges and support one another during times of adversity. Cumberland County's performance on this dimension is weak when compared to other North Carolina counties, ranking 98th in the state.

Notable variables for Cumberland County within this dimension include:

VARIABLE STRENGTH	FACTOR	CUMBERLAND COUNTY VALUE	NC COUNTY AVERAGE VALUE
Strongest	Nonprofits Organizations per 1,000 Residents	3.63	3.17
2nd Strongest	Yearly Population Change Percentage	-0.306%	0.906%
Bottom 10 in NC	Violent Crimes per 10,000 Residents	8.16	3.07
Bottom 10 in NC, Weakest	Percentage of Inactive Voters	16.8%	11.3%

Socioeconomics: 34.73

This component considers factors such as income levels, poverty rates, and inequality, which can impact a community's ability to withstand and recover from economic shocks. Cumberland County's performance on this dimension is average when compared to other North Carolina counties, ranking 70th in the state.

Notable variables for Cumberland County within this dimension include:

VARIABLE STRENGTH	FACTOR	CUMBERLAND COUNTY VALUE	NC COUNTY AVERAGE VALUE
Top 10 in NC, Strongest	Percentage of Population without a High School Diploma	4.77%	9.05%
2nd Strongest	Population 25+ with at	26.89%	24.4%

Bottom 10 in NC, Weakest	least a Bachelor's Degree Percentage of Households Spending more than 30% Income on Housing	34.54%	24.53%
---------------------------------	--	--------	--------

Education: 35.79

This component evaluates the quality of educational institutions and the educational attainment levels of the local population, which play a crucial role in developing a skilled and adaptable workforce. Cumberland County's performance on this dimension is fairly weak when compared to other North Carolina counties, ranking 70th in the state.

Notable variables for Cumberland County within this dimension include:

VARIABLE STRENGTH	FACTOR	CUMBERLAND COUNTY VALUE	NC COUNTY AVERAGE VALUE
Strongest	Dropout Rate	1.11%	1.65%
2nd Strongest	3rd Grade Reading Proficiency	44.2%	43.1%
Weakest	Local LEA Financial Resources (per ADM)	\$4,934	\$8,683

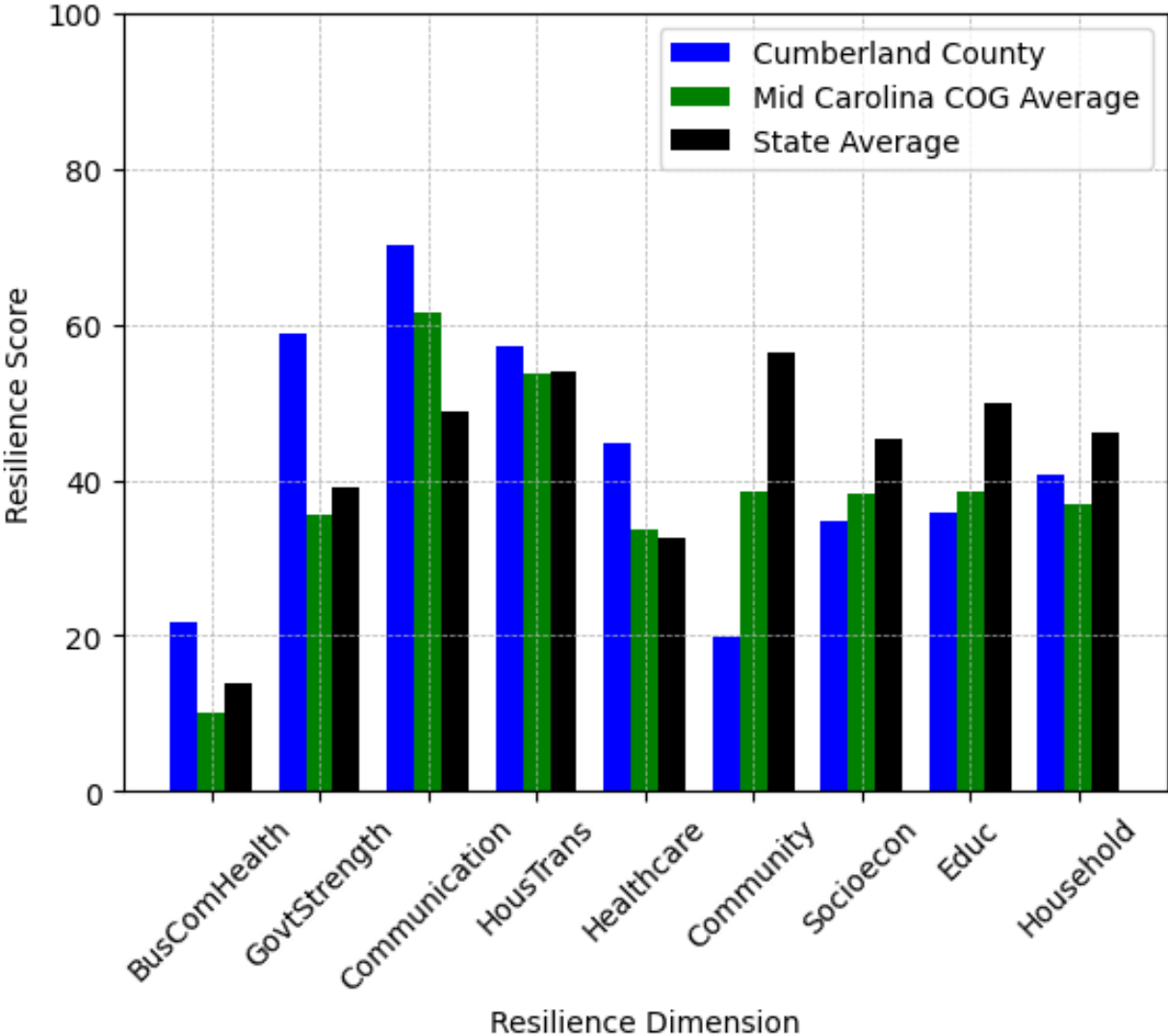
Household Characteristics: 40.82

This component examines factors such as the proportion of single-parent households, age distribution, and the proportion of individuals with disabilities, as these elements can influence a community's resilience and ability to recover from economic disruptions. Cumberland County's performance on this dimension is average when compared to other North Carolina counties, ranking 66th in the state.

Notable variables for Cumberland County within this dimension include:

VARIABLE STRENGTH	FACTOR	CUMBERLAND COUNTY VALUE	NC COUNTY AVERAGE VALUE
Top 10 in NC, Strongest	Percentage of Population 65 and Older	12.46%	20.53%
2nd Strongest	Percentage of Population with a Disability	16.685%	16.566%
Bottom 10 in NC, Weakest	Percentage of Population 17 and Younger	24.94%	20.37%

Cumberland County's Resilience Dimension Scores Over Time As Compared to the Region and State Averages



Note: Resilience Scores are normalized from 1 to 100 with the most resilient county scoring 100. The Resilience Score is determined based on a county's performance relative to NC's other 99 counties.

Notable Trends in Resilience Indicators, 2017-2022

NOTE: The key trends in the this section are identified based on change rates of at least .15 standard deviations over at least 5 years. Variables are positively oriented such that a positive trend indicates improved performance (e.g., 'improvement' in property crime is a lower crime rate, while 'decline' in property crime indicates a higher crime rate).

Trends in the Business Community Health dimension:

Total Employment Level: **1,404** (5-year change rate = **1.17%**, from 120,129 to 121,533)

↓ Change in rank from 7 to 8 in NC

Average Weekly Wages: **158 dollars** (5-year change rate = **19.08%**, from 828 to 986)

↓ Change in rank from 18 to 31 in NC

Real GDP in Current Dollars: **1,228,272 dollars** (5-year change rate = **7.35%**, from 16,710,170 to 17,938,442)

→ No change in rank

Trends in the County Government Fiscal Strength dimension:

Adjusted Tax Base: **4,792 dollars** (5-year change rate = **7.12%**, from 67,263 to 72,055)

↓ Change in rank from 86 to 93 in NC

County Sales Tax: **27,082,980 dollars** (5-year change rate = **44.52%**, from 60,828,388 to 87,911,368)

→ No change in rank

Trends in the Housing & Transportation dimension:

Ratio of Average Estimated Home Value to Median Income : **0.26** (5-year change rate = **24.73%**, from 1.05 to 1.31)

↑ Change in rank from 5 to 4 in NC

Average Available Rent Money less the Average HUD Fair Market Rent: **120.3 dollars** (5-year change rate = **33.94%**, from 354.5 to 474.8)

↓ Change in rank from 89 to 92 in NC

Trends in the Healthcare dimension:

Opioid Deaths per 100,000 Residents: **16.1** (5-year change rate = **50.47%**, from 31.9 to 48)

↓ Change in rank from 74 to 76 in NC

Nurses per 10,000 Residents: **-47.32** (5-year change rate = **-3.87%**, from 1,221.81 to 1,174.49)

→ No change in rank

Physicians per 10,000 Residents: **-0.45** (5-year change rate = **-2.47%**, from 18.2 to 17.75)

→ No change in rank

Trends in the Community Cohesion dimension:

Violent Crimes per 10,000 Residents: **1.51** (4-year change rate = **22.64%**, from 6.65 to 8.16)

→ No change in rank

Property Crimes per 10,000 Residents: **-3.37** (4-year change rate = **-10.54%**, from 31.95 to 28.59)

↓ Change in rank from 86 to 89 in NC

Nonprofits Organizations per 1,000 Residents: **0.68** (5-year change rate = **22.87%**, from 2.96 to 3.63)

↑ Change in rank from 45 to 37 in NC

Trends in the Socioeconomics dimension:

Unemployment Rate (Q4): **-0.4 percent** (5-year change rate = **-8.02%**, from 5.4 to 5)

↓ Change in rank from 81 to 90 in NC

Median Household Income: **8,900 dollars** (5-year change rate = **17.02%**, from 52,300 to 61,200)

↓ Change in rank from 48 to 65 in NC

Trends in the Education dimension:

Graduation Percentage: **1 percent** (5-year change rate = **1.17%**, from 85.4 to 86.4)

↓ Change in rank from 64 to 73 in NC

Dropout Rate: **-1.2 percent** (5-year change rate = **-51.9%**, from 2.31 to 1.11)

↑ Change in rank from 54 to 27 in NC

Student to Teacher Ratio: **-1** (4-year change rate = **-5.42%**, from 16 to 16)

↑ Change in rank from 87 to 83 in NC

3rd Grade Reading Proficiency: **-11.4 percent** (5-year change rate = **-20.5%**, from 55.6 to 44.2)

↓ Change in rank from 41 to 49 in NC

Data Advisements:

- Availability of Broadband Services is not available for 2022 and was excluded from calculating this county's dimension and resilience score.
- Adoption Rate of Broadband Services is not available for 2022 and was excluded from calculating this county's dimension and resilience score.