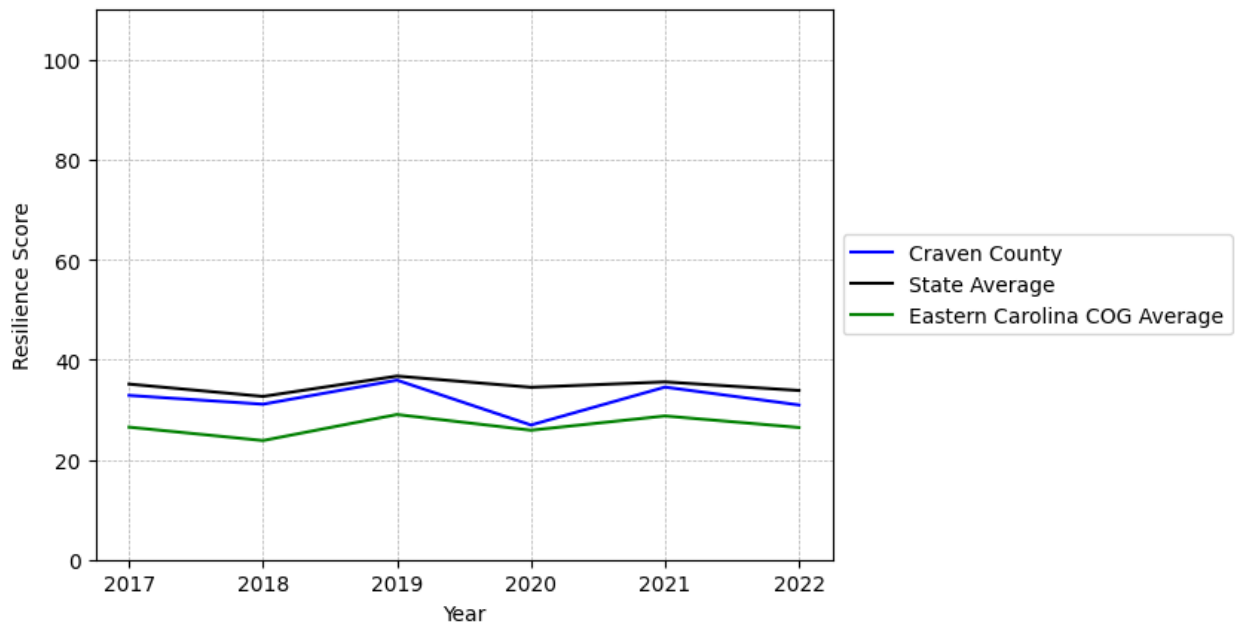


Craven County Summary

Resilience Score: 30.94

In 2022, Craven County achieved a Resilience Score of 30.94, which is average as compared to the North Carolina State average.

**Craven County's Resilience Score Over Time
As Compared to the Region and State Averages**



Note: Resilience Scores are normalized from 1 to 100 with the most resilient county scoring 100. The Resilience Score is determined based on a county's performance relative to NC's other 99 counties.

Craven County's Resilience Score is comprised of 9 distinct dimensions of resilience. Below are Craven County's scores for 2022 on those 9 dimensions, and their rank relative to other North Carolina counties.

Business Community Health: 13.29

This component examines the strength and diversity of the local business community, including factors such as the number of businesses, employment levels, and industry diversity. Craven County's performance on this dimension is average when compared to other North Carolina counties, ranking 37th in the state.

Notable variables for Craven County within this dimension include:

VARIABLE STRENGTH	FACTOR	CRAVEN COUNTY VALUE	NC COUNTY AVERAGE VALUE
Top 10 in NC, Strongest	Science, Engineering, & Technology Industries Employment Percentage	3.05%	1.79%
2nd Strongest	Average Weekly Wages	\$1,02	\$951
Weakest	Ratio of Available Child Care Slots to Number of Children under Five	0.43	0.59

County Government Fiscal Strength: 25.66

This component looks at the financial health of local governments, including their ability to generate revenue, manage debt, and maintain adequate reserves to weather economic downturns. Craven County's performance on this dimension is fairly weak when compared to other North Carolina counties, ranking 80th in the state.

Notable variables for Craven County within this dimension include:

VARIABLE STRENGTH	FACTOR	CRAVEN COUNTY VALUE	NC COUNTY AVERAGE VALUE
Strongest	County Sales Tax	\$26,791,082	\$31,151,902
2nd Strongest	Operations Ratio of County Government	1.1	1.11
Weakest	Dependency Ratio of County Government	0.22	0.16

Communication: 50.9

This component assesses the availability and quality of communication infrastructure, such as broadband internet access, which is crucial for businesses and residents to stay connected and resilient during disruptions. Craven County's performance on this dimension is average when compared to other North Carolina counties, ranking 44th in the state.

Notable variables for Craven County within this dimension include:

VARIABLE STRENGTH	FACTOR	CRAVEN COUNTY VALUE	NC COUNTY AVERAGE VALUE
Strongest	Percentage of Population without Smartphones	14.4%	17.22%
2nd Strongest	Local High-Speed Mobile Data Availability	0.65	0.66
Weakest	Broadband Availability	0.56	0.6

Housing & Transportation: 78.59

This component evaluates the accessibility and affordability of housing, as well as the availability of reliable transportation options, which are essential for a resilient workforce and economy. Craven County's performance on this dimension is fairly strong when compared to other North Carolina counties, ranking 19th in the state.

Notable variables for Craven County within this dimension include:

VARIABLE STRENGTH	FACTOR	CRAVEN COUNTY VALUE	NC COUNTY AVERAGE VALUE
Top 10 in NC, Strongest	Percentage of People with Commute Times Over 45 Minutes	8.24%	16.69%
2nd Strongest	Percentage of People Driving Alone to Work	85.07%	86.36%
Weakest	Percentage of Population without Vehicles	5.92%	5.75%

Healthcare: 18.71

The healthcare component examines the availability and quality of healthcare facilities, services, and professionals, which are critical for maintaining a healthy and productive workforce. Craven County's performance on this dimension is fairly weak when compared to other North Carolina counties, ranking 76th in the state.

Notable variables for Craven County within this dimension include:

VARIABLE STRENGTH	FACTOR	CRAVEN COUNTY VALUE	NC COUNTY AVERAGE VALUE
Strongest	Physicians per 10,000 Residents	26.36	16.05
2nd Strongest	Nurses per 10,000 Residents	319.06	262.64

Bottom 10 in NC, Weakest	Opioid Deaths per 100,000 Residents	81.3	38.73
-------------------------------------	--	------	-------

Community Cohesion: 43.4

This component looks at the strength of social networks, community engagement, and the ability of residents to work together to address challenges and support one another during times of adversity. Craven County's performance on this dimension is fairly weak when compared to other North Carolina counties, ranking 81st in the state.

Notable variables for Craven County within this dimension include:

VARIABLE STRENGTH	FACTOR	CRAVEN COUNTY VALUE	NC COUNTY AVERAGE VALUE
Strongest	Property Crimes per 10,000 Residents	14.69	15.74
2nd Strongest	Yearly Population Change Percentage	0.609%	0.906%
Bottom 10 in NC, Weakest	Percentage of Inactive Voters	15.79%	11.3%

Socioeconomics: 53.14

This component considers factors such as income levels, poverty rates, and inequality, which can impact a community's ability to withstand and recover from economic shocks. Craven County's performance on this dimension is average when compared to other North Carolina counties, ranking 33rd in the state.

Notable variables for Craven County within this dimension include:

VARIABLE STRENGTH	FACTOR	CRAVEN COUNTY VALUE	NC COUNTY AVERAGE VALUE
Strongest	Percentage of Population without a High School Diploma	6.13%	9.05%
2nd Strongest	Percentage of Population without Health Insurance	9.21%	11.23%
Weakest	Percentage of Households Spending more than 30% Income on Housing	26.5%	24.53%

Education: 39.66

This component evaluates the quality of educational institutions and the educational attainment levels of the local population, which play a crucial role in developing a skilled and adaptable workforce. Craven County's performance on this dimension is average when compared to other North Carolina counties, ranking 66th in the state.

Notable variables for Craven County within this dimension include:

VARIABLE STRENGTH	FACTOR	CRAVEN COUNTY VALUE	NC COUNTY AVERAGE VALUE
Strongest	Dropout Rate	0.56%	1.65%
2nd Strongest	3rd Grade Reading Proficiency	51.4%	43.1%
Bottom 10 in NC, Weakest	Student to Teacher Ratio	18	14

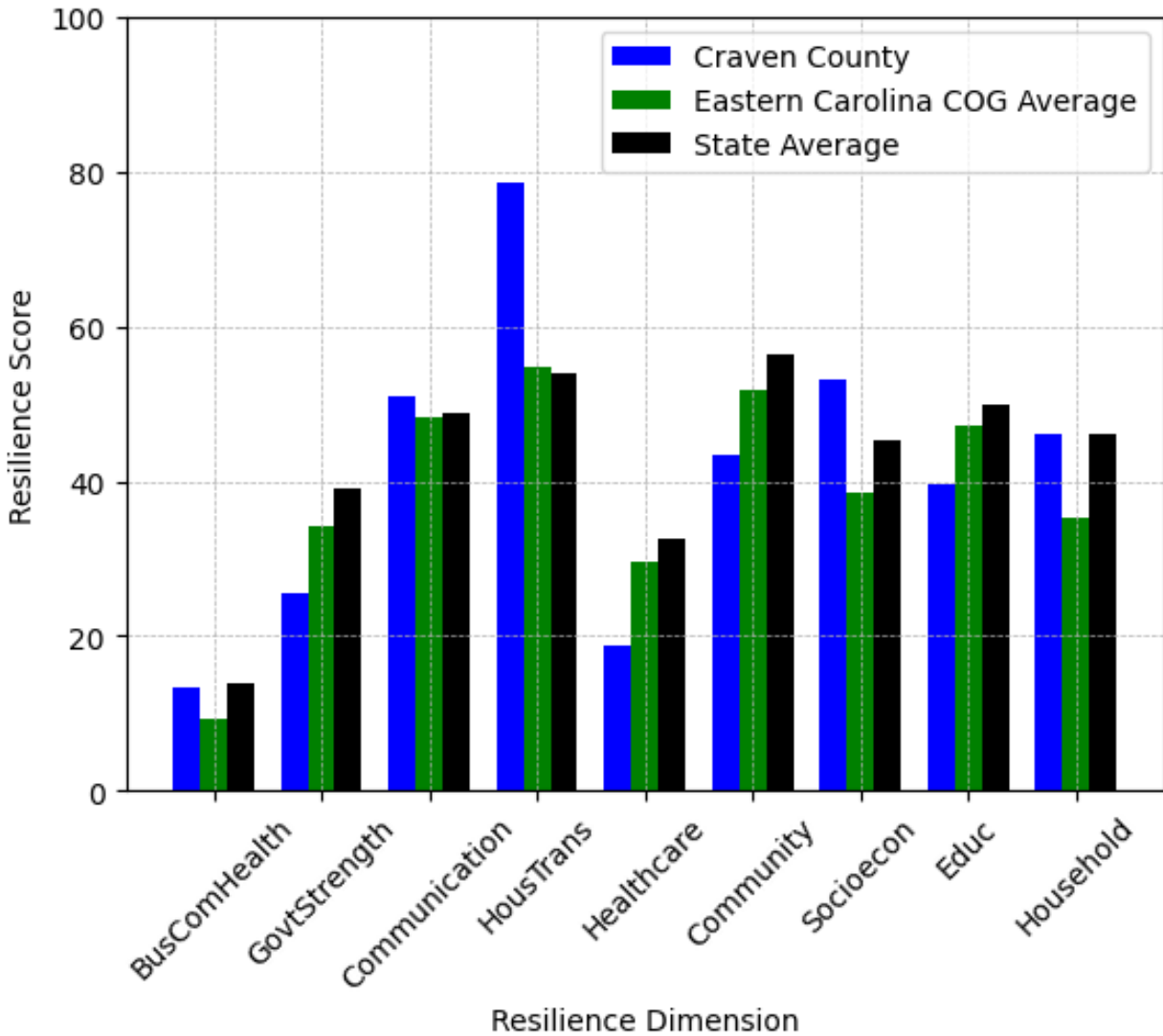
Household Characteristics: 45.99

This component examines factors such as the proportion of single-parent households, age distribution, and the proportion of individuals with disabilities, as these elements can influence a community's resilience and ability to recover from economic disruptions. Craven County's performance on this dimension is average when compared to other North Carolina counties, ranking 49th in the state.

Notable variables for Craven County within this dimension include:

VARIABLE STRENGTH	FACTOR	CRAVEN COUNTY VALUE	NC COUNTY AVERAGE VALUE
Strongest	Percentage of Population with a Disability	15.369%	16.566%
2nd Strongest	Percentage of Population 65 and Older	19.8%	20.53%
Weakest	Percentage of Population 17 and Younger	21.72%	20.37%

Craven County's Resilience Dimension Scores Over Time As Compared to the Region and State Averages



Note: Resilience Scores are normalized from 1 to 100 with the most resilient county scoring 100. The Resilience Score is determined based on a county's performance relative to NC's other 99 counties.

Notable Trends in Resilience Indicators, 2017-2022

NOTE: The key trends in the this section are identified based on change rates of at least .15 standard deviations over at least 5 years. Variables are positively oriented such that a positive trend indicates improved performance (e.g., 'improvement' in property crime is a lower crime rate, while 'decline' in property crime indicates a higher crime rate).

Trends in the Business Community Health dimension:

Total Employment Level: **989** (5-year change rate = **2.51%**, from 39,372 to 40,361)

→ No change in rank

Average Weekly Wages: **157 dollars** (5-year change rate = **18.19%**, from 863 to 1,020)

↓ Change in rank from 11 to 19 in NC

Real GDP in Current Dollars: **98,914 dollars** (5-year change rate = **2.02%**, from 4,885,294 to 4,984,208)

↓ Change in rank from 22 to 23 in NC

Trends in the County Government Fiscal Strength dimension:

Adjusted Tax Base: **11,404 dollars** (5-year change rate = **13.01%**, from 87,684 to 99,088)

↓ Change in rank from 51 to 54 in NC

County Sales Tax: **9,146,490 dollars** (5-year change rate = **51.84%**, from 17,644,592 to 26,791,082)

→ No change in rank

Trends in the Housing & Transportation dimension:

Ratio of Average Estimated Home Value to Median Income : **0.88** (5-year change rate = **22.72%**, from 3.86 to 4.73)

↑ Change in rank from 33 to 30 in NC

Average Available Rent Money less the Average HUD Fair Market Rent: **411 dollars** (5-year change rate = **114.29%**, from 359.6 to 770.6)

↑ Change in rank from 88 to 54 in NC

Trends in the Healthcare dimension:

Opioid Deaths per 100,000 Residents: **40.4** (5-year change rate = **98.78%**, from 40.9 to 81.3)

↓ Change in rank from 91 to 98 in NC

Nurses per 10,000 Residents: **1.45** (5-year change rate = **0.46%**, from 317.61 to 319.06)

↑ Change in rank from 20 to 19 in NC

Mental Health Professionals per 10,000 Residents: **0.86** (5-year change rate = **12.68%**, from 6.78 to 7.64)

↑ Change in rank from 30 to 29 in NC

Trends in the Community Cohesion dimension:

Violent Crimes per 10,000 Residents: **0.28** (4-year change rate = **10.57%**, from 2.6 to 2.88)

↑ Change in rank from 65 to 58 in NC

Property Crimes per 10,000 Residents: **-7.69** (4-year change rate = **-34.37%**, from 22.39 to 14.69)

↑ Change in rank from 62 to 53 in NC

Nonprofits Organizations per 1,000 Residents: **-0.32** (5-year change rate = **-12.26%**, from 2.61 to 2.29)

↓ Change in rank from 57 to 67 in NC

Trends in the Socioeconomics dimension:

Unemployment Rate (Q4): **-0.7 percent** (5-year change rate = **-15.27%**, from 4.4 to 3.7)

↓ Change in rank from 55 to 56 in NC

Median Household Income: **24,000 dollars** (5-year change rate = **47.06%**, from 51,000 to 75,000)

↑ Change in rank from 57 to 30 in NC

Trends in the Education dimension:

Graduation Percentage: **-0.6 percent** (5-year change rate = **-0.69%**, from 87 to 86.4)

↓ Change in rank from 51 to 74 in NC

Dropout Rate: **-1.59 percent** (5-year change rate = **-74.09%**, from 2.15 to 0.56)

↑ Change in rank from 46 to 13 in NC

Student to Teacher Ratio: **1** (4-year change rate = **6.16%**, from 17 to 18)

↓ Change in rank from 90 to 99 in NC

3rd Grade Reading Proficiency: **-4.1 percent** (5-year change rate = **-7.39%**, from 55.5 to 51.4)

↑ Change in rank from 42 to 24 in NC

Data Advisements:

- Availability of Broadband Services is not available for 2022 and was excluded from calculating this county's dimension and resilience score.
- Adoption Rate of Broadband Services is not available for 2022 and was excluded from calculating this county's dimension and resilience score.