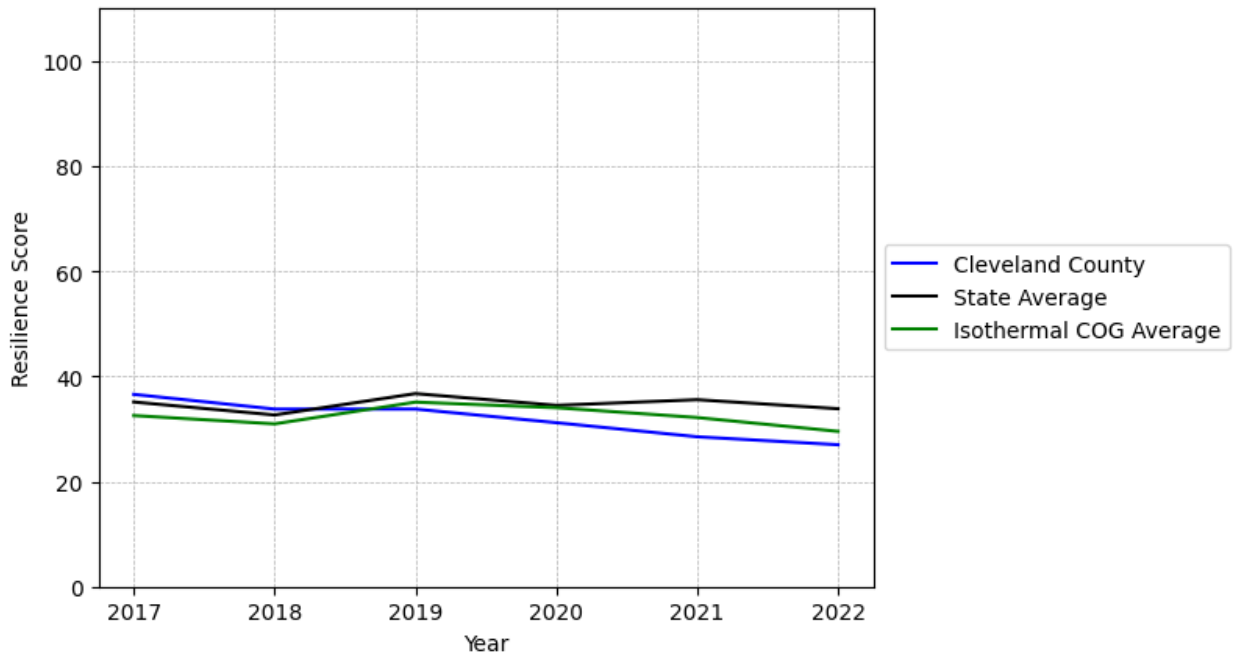


Cleveland County Summary

Resilience Score: 26.99

In 2022, Cleveland County achieved a Resilience Score of 26.99, which is average as compared to the North Carolina State average.

**Cleveland County's Resilience Score Over Time
As Compared to the Region and State Averages**



Note: Resilience Scores are normalized from 1 to 100 with the most resilient county scoring 100. The Resilience Score is determined based on a county's performance relative to NC's other 99 counties.

Cleveland County's Resilience Score is comprised of 9 distinct dimensions of resilience. Below are Cleveland County's scores for 2022 on those 9 dimensions, and their rank relative to other North Carolina counties.

Business Community Health: 9.86

This component examines the strength and diversity of the local business community, including factors such as the number of businesses, employment levels, and industry diversity. Cleveland County's performance on this dimension is average when compared to other North Carolina counties, ranking 58th in the state.

Notable variables for Cleveland County within this dimension include:

VARIABLE STRENGTH	FACTOR	CLEVELAND COUNTY VALUE	NC COUNTY AVERAGE VALUE
Strongest	Real GDP in Current Dollars	\$4,463,065	\$6,092,555
2nd Strongest	Total Employment Level	36,379	45,758
Weakest	Private Sector Diversity	0.197	0.28

County Government Fiscal Strength: 27.67

This component looks at the financial health of local governments, including their ability to generate revenue, manage debt, and maintain adequate reserves to weather economic downturns. Cleveland County's performance on this dimension is fairly weak when compared to other North Carolina counties, ranking 78th in the state.

Notable variables for Cleveland County within this dimension include:

VARIABLE STRENGTH	FACTOR	CLEVELAND COUNTY VALUE	NC COUNTY AVERAGE VALUE
Strongest	Capital Assets Condition Ratio of County Government	0.59	0.51
2nd Strongest	County Sales Tax	\$26,560,49	\$31,151,902
Bottom 10 in NC, Weakest	Operations Ratio of County Government	0.98	1.11

Communication: 58.94

This component assesses the availability and quality of communication infrastructure, such as broadband internet access, which is crucial for businesses and residents to stay connected and resilient during disruptions. Cleveland County's performance on this dimension is average when compared to other North Carolina counties, ranking 32nd in the state.

Notable variables for Cleveland County within this dimension include:

VARIABLE STRENGTH	FACTOR	CLEVELAND COUNTY VALUE	NC COUNTY AVERAGE VALUE
Strongest	Local High-Speed Mobile Data Availability	0.84	0.66
2nd Strongest	In-Vehicle High-Speed Mobile Data Availability	0.49	0.37
Weakest	Percentage of Population without Smartphones	18.55%	17.22%

Housing & Transportation: 43.96

This component evaluates the accessibility and affordability of housing, as well as the availability of reliable transportation options, which are essential for a resilient workforce and economy.

Cleveland County's performance on this dimension is fairly weak when compared to other North Carolina counties, ranking 80th in the state.

Notable variables for Cleveland County within this dimension include:

VARIABLE STRENGTH	FACTOR	CLEVELAND COUNTY VALUE	NC COUNTY AVERAGE VALUE
Strongest	Ratio of Average Estimated Home Value to Median Income	4.24	13.67
2nd Strongest	Percentage of Owner-Occupied Homes	58.2%	57.87%
Bottom 10 in NC, Weakest	Percentage of Households with More Residents than Rooms	3.38%	2.1%

Healthcare: 32.6

The healthcare component examines the availability and quality of healthcare facilities, services, and professionals, which are critical for maintaining a healthy and productive workforce. Cleveland County's performance on this dimension is average when compared to other North Carolina counties, ranking 30th in the state.

Notable variables for Cleveland County within this dimension include:

VARIABLE STRENGTH	FACTOR	CLEVELAND COUNTY VALUE	NC COUNTY AVERAGE VALUE
Strongest	Nurses per 10,000 Residents	363.87	262.64
2nd Strongest	Opioid Deaths per 100,000 Residents	25.5	38.73

Weakest	Mental Health Professionals per 10,000 Residents	5.5	6.6
----------------	--	-----	-----

Community Cohesion: 52.41

This component looks at the strength of social networks, community engagement, and the ability of residents to work together to address challenges and support one another during times of adversity. Cleveland County's performance on this dimension is average when compared to other North Carolina counties, ranking 65th in the state.

Notable variables for Cleveland County within this dimension include:

VARIABLE STRENGTH	FACTOR	CLEVELAND COUNTY VALUE	NC COUNTY AVERAGE VALUE
Strongest	Nonprofits Organizations per 1,000 Residents	3.39	3.17
2nd Strongest	Property Crimes per 10,000 Residents	14.67	15.74
Weakest	Violent Crimes per 10,000 Residents	4.41	3.07

Socioeconomics: 37.12

This component considers factors such as income levels, poverty rates, and inequality, which can impact a community's ability to withstand and recover from economic shocks. Cleveland County's performance on this dimension is average when compared to other North Carolina counties, ranking 65th in the state.

Notable variables for Cleveland County within this dimension include:

VARIABLE STRENGTH	FACTOR	CLEVELAND COUNTY VALUE	NC COUNTY AVERAGE VALUE
Strongest	Percentage of Population without a High School Diploma	9.11%	9.05%
2nd Strongest	Percentage of Population without Health Insurance	11.17%	11.23%
Weakest	Median Household Income	\$59,6	\$70,088

Education: 41.89

This component evaluates the quality of educational institutions and the educational attainment levels of the local population, which play a crucial role in developing a skilled and adaptable workforce. Cleveland County's performance on this dimension is average when compared to other North Carolina counties, ranking 60th in the state.

Notable variables for Cleveland County within this dimension include:

VARIABLE STRENGTH	FACTOR	CLEVELAND COUNTY VALUE	NC COUNTY AVERAGE VALUE
Strongest	Teacher Attrition Rate	0.08	0.12
2nd Strongest	3rd Grade Reading Proficiency	44.4%	43.1%
Weakest	Dropout Rate	2.35%	1.65%

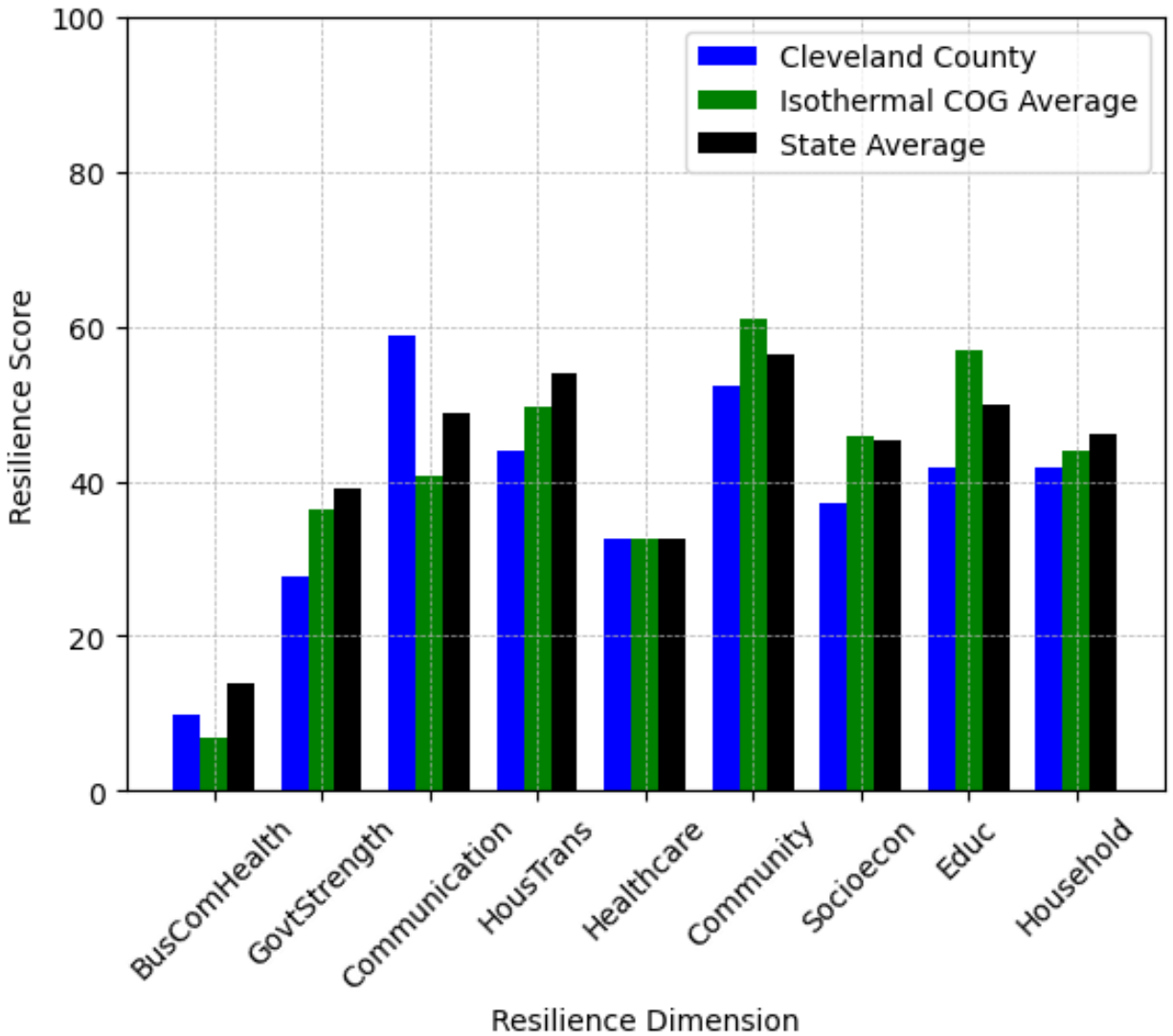
Household Characteristics: 41.79

This component examines factors such as the proportion of single-parent households, age distribution, and the proportion of individuals with disabilities, as these elements can influence a community's resilience and ability to recover from economic disruptions. Cleveland County's performance on this dimension is average when compared to other North Carolina counties, ranking 63rd in the state.

Notable variables for Cleveland County within this dimension include:

VARIABLE STRENGTH	FACTOR	CLEVELAND COUNTY VALUE	NC COUNTY AVERAGE VALUE
Strongest	Percentage of Population with Limited English Proficiency	0.704%	1.454%
2nd Strongest	Percentage of Population 65 and Older	18.66%	20.53%
Weakest	Percentage of Single Parent Households	45.276%	36.132%

Cleveland County's Resilience Dimension Scores Over Time As Compared to the Region and State Averages



Note: Resilience Scores are normalized from 1 to 100 with the most resilient county scoring 100. The Resilience Score is determined based on a county's performance relative to NC's other 99 counties.

Notable Trends in Resilience Indicators, 2017-2022

NOTE: The key trends in the this section are identified based on change rates of at least .15 standard deviations over at least 5 years. Variables are positively oriented such that a positive trend indicates improved performance (e.g., 'improvement' in property crime is a lower crime rate, while 'decline' in property crime indicates a higher crime rate).

Trends in the Business Community Health dimension:

Total Employment Level: **1,006** (5-year change rate = **2.84%**, from 35,373 to 36,379)

↓ Change in rank from 28 to 29 in NC

Average Weekly Wages: **171 dollars** (5-year change rate = **21.78%**, from 785 to 956)

↓ Change in rank from 27 to 38 in NC

Real GDP in Current Dollars: **255,892 dollars** (5-year change rate = **6.08%**, from 4,207,173 to 4,463,065)

↑ Change in rank from 26 to 25 in NC

Trends in the County Government Fiscal Strength dimension:

Adjusted Tax Base: **19,411 dollars** (5-year change rate = **24.68%**, from 78,640 to 98,051)

↑ Change in rank from 57 to 56 in NC

County Sales Tax: **7,362,330 dollars** (5-year change rate = **38.35%**, from 19,198,160 to 26,560,490)

↓ Change in rank from 27 to 32 in NC

Trends in the Housing & Transportation dimension:

Ratio of Average Estimated Home Value to Median Income : **1.31** (5-year change rate = **44.93%**, from 2.92 to 4.24)

↓ Change in rank from 23 to 25 in NC

Average Available Rent Money less the Average HUD Fair Market Rent: **210.9 dollars** (5-year change rate = **42.49%**, from 496.3 to 707.2)

↓ Change in rank from 55 to 60 in NC

Trends in the Healthcare dimension:

Opioid Deaths per 100,000 Residents: **13.2** (5-year change rate = **107.32%**, from 12.3 to 25.5)

↓ Change in rank from 15 to 24 in NC

Nurses per 10,000 Residents: **-37.87** (5-year change rate = **-9.43%**, from 401.74 to 363.87)

↓ Change in rank from 15 to 16 in NC

Physicians per 10,000 Residents: **-0.46** (5-year change rate = **-2.7%**, from 17.05 to 16.59)

↓ Change in rank from 34 to 36 in NC

Mental Health Professionals per 10,000 Residents: **0.77** (5-year change rate = **16.28%**, from 4.73 to 5.5)

↑ Change in rank from 62 to 49 in NC

Trends in the Community Cohesion dimension:

Violent Crimes per 10,000 Residents: **2.45** (4-year change rate = **124.78%**, from 1.96 to 4.41)

↓ Change in rank from 46 to 78 in NC

Property Crimes per 10,000 Residents: **-2.69** (4-year change rate = **-15.5%**, from 17.36 to 14.67)

↓ Change in rank from 46 to 51 in NC

Nonprofits Organizations per 1,000 Residents: **0.33** (5-year change rate = **10.83%**, from 3.06 to 3.39)

↓ Change in rank from 39 to 42 in NC

Trends in the Socioeconomics dimension:

Unemployment Rate (Q4): **-0.6 percent** (5-year change rate = **-13.95%**, from 4.3 to 3.7)

↓ Change in rank from 48 to 58 in NC

Median Household Income: **10,100 dollars** (5-year change rate = **20.4%**, from 49,500 to 59,600)

↓ Change in rank from 61 to 70 in NC

Trends in the Education dimension:

Graduation Percentage: **-1.2 percent** (5-year change rate = **-1.35%**, from 89.2 to 88)

↓ Change in rank from 34 to 52 in NC

Dropout Rate: **0.22 percent** (5-year change rate = **10.6%**, from 2.12 to 2.35)

↓ Change in rank from 45 to 80 in NC

3rd Grade Reading Proficiency: **-14.6 percent** (5-year change rate = **-24.75%**, from 59 to 44.4)

↓ Change in rank from 28 to 46 in NC

Data Advisements:

- Availability of Broadband Services is not available for 2022 and was excluded from calculating this county's dimension and resilience score.
- Adoption Rate of Broadband Services is not available for 2022 and was excluded from calculating this county's dimension and resilience score.