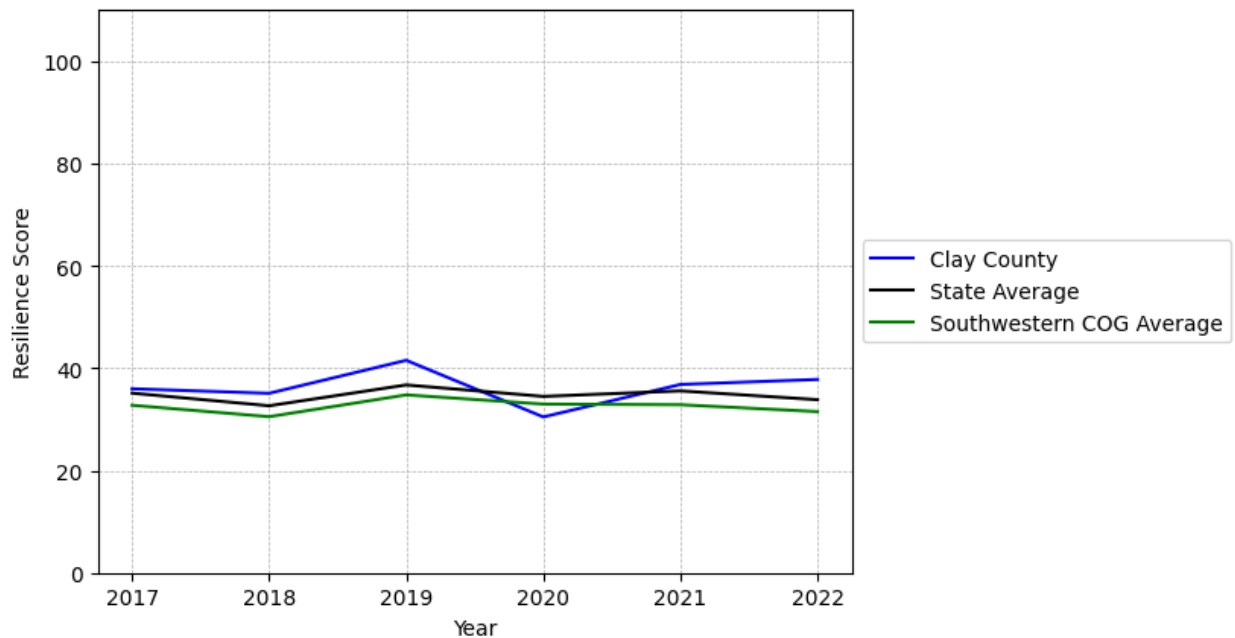


Clay County Summary

Resilience Score: 37.79

In 2022, Clay County achieved a Resilience Score of 37.79, which is average as compared to the North Carolina State average.

**Clay County's Resilience Score Over Time
As Compared to the Region and State Averages**



Note: Resilience Scores are normalized from 1 to 100 with the most resilient county scoring 100. The Resilience Score is determined based on a county's performance relative to NC's other 99 counties.

Clay County's Resilience Score is comprised of 9 distinct dimensions of resilience. Below are Clay County's scores for 2022 on those 9 dimensions, and their rank relative to other North Carolina counties.

Business Community Health: 13.22

This component examines the strength and diversity of the local business community, including factors such as the number of businesses, employment levels, and industry diversity. Clay County's performance on this dimension is average when compared to other North Carolina counties, ranking 38th in the state.

Notable variables for Clay County within this dimension include:

VARIABLE STRENGTH	FACTOR	CLAY COUNTY VALUE	NC COUNTY AVERAGE VALUE
Strongest	Private Sector Diversity	0.448	0.28
2nd Strongest	Ratio of Available Child Care Slots to Number of Children under Five	0.65	0.59
Bottom 10 in NC	Total Employment Level	2,145	45,758
Bottom 10 in NC	Real GDP in Current Dollars	\$215,643	\$6,092,555
Weakest	Science, Engineering, & Technology Industries Employment Percentage	N/A	1.79%

County Government Fiscal Strength: 29.35

This component looks at the financial health of local governments, including their ability to generate revenue, manage debt, and maintain adequate reserves to weather economic downturns. Clay County's performance on this dimension is fairly weak when compared to other North Carolina counties, ranking 74th in the state.

Notable variables for Clay County within this dimension include:

VARIABLE STRENGTH	FACTOR	CLAY COUNTY VALUE	NC COUNTY AVERAGE VALUE
Strongest	Adjusted Tax Base	\$178,605	\$124,092
2nd Strongest	Debt Service Ratio of County Government	0.06	0.07
Weakest	County Sales Tax	\$3,744,09	\$31,151,902

Communication: 32.59

This component assesses the availability and quality of communication infrastructure, such as broadband internet access, which is crucial for businesses and residents to stay connected and resilient during disruptions. Clay County's performance on this dimension is fairly weak when compared to other North Carolina counties, ranking 87th in the state.

Notable variables for Clay County within this dimension include:

VARIABLE STRENGTH	FACTOR	CLAY COUNTY VALUE	NC COUNTY AVERAGE VALUE
Strongest	Broadband Availability	0.57	0.6
2nd Strongest	Percentage of Population without Smartphones	19.5%	17.22%
Bottom 10 in NC	Local High-Speed Mobile Data Availability	0.37	0.66
Bottom 10 in NC, Weakest	In-Vehicle High-Speed Mobile Data Availability	0.16	0.37

Housing & Transportation: 53.3

This component evaluates the accessibility and affordability of housing, as well as the availability of reliable transportation options, which are essential for a resilient workforce and economy. Clay County's performance on this dimension is average when compared to other North Carolina counties, ranking 61st in the state.

Notable variables for Clay County within this dimension include:

VARIABLE STRENGTH	FACTOR	CLAY COUNTY VALUE	NC COUNTY AVERAGE VALUE
Top 10 in NC, Strongest	Percentage of People Driving Alone to Work	81.85%	86.36%
2nd Strongest	Percentage of Homes Built Before 1980	31.78%	40.9%
Bottom 10 in NC, Weakest	Ratio of Average Estimated Home Value to Median Income	51.49	13.67

Healthcare: 24.91

The healthcare component examines the availability and quality of healthcare facilities, services, and professionals, which are critical for maintaining a healthy and productive workforce. Clay County's performance on this dimension is average when compared to other North Carolina counties, ranking 56th in the state.

Notable variables for Clay County within this dimension include:

VARIABLE STRENGTH	FACTOR	CLAY COUNTY VALUE	NC COUNTY AVERAGE VALUE
Top 10 in NC, Strongest	Opioid Deaths per 100,000 Residents	17.8	38.73

2nd Strongest	Nursing Home Beds per 1,000 Residents of Age 65+	24.26	27.53
Weakest	Nurses per 10,000 Residents	72.2	262.64

Community Cohesion: 76.06

This component looks at the strength of social networks, community engagement, and the ability of residents to work together to address challenges and support one another during times of adversity. Clay County's performance on this dimension is strong when compared to other North Carolina counties, ranking 12th in the state.

Notable variables for Clay County within this dimension include:

VARIABLE STRENGTH	FACTOR	CLAY COUNTY VALUE	NC COUNTY AVERAGE VALUE
Top 10 in NC, Strongest	Yearly Population Change Percentage	2.75%	0.906%
Top 10 in NC, 2nd Strongest	Nonprofits Organizations per 1,000 Residents	5.01	3.17
Weakest	Percentage of Inactive Voters	11.13%	11.3%

Socioeconomics: 36.9

This component considers factors such as income levels, poverty rates, and inequality, which can impact a community's ability to withstand and recover from economic shocks. Clay County's performance on this dimension is average when compared to other North Carolina counties, ranking 66th in the state.

Notable variables for Clay County within this dimension include:

VARIABLE STRENGTH	FACTOR	CLAY COUNTY VALUE	NC COUNTY AVERAGE VALUE
Strongest	Population 25+ with at least a Bachelor's Degree	28.82%	24.4%
2nd Strongest	Total Percentage of Population Below 150% Poverty Line	23.32%	25.93%
Bottom 10 in NC, Weakest	Percentage of Population without Health Insurance	15.27%	11.23%

Education: 65.23

This component evaluates the quality of educational institutions and the educational attainment levels of the local population, which play a crucial role in developing a skilled and adaptable workforce. Clay County's performance on this dimension is strong when compared to other North Carolina counties, ranking 12th in the state.

Notable variables for Clay County within this dimension include:

VARIABLE STRENGTH	FACTOR	CLAY COUNTY VALUE	NC COUNTY AVERAGE VALUE
Strongest	Postsecondary Enrollment Percentage	34.22%	25.48%
2nd Strongest	Student to Teacher Ratio	13	14
Weakest	Teacher Attrition Rate	0.11	0.12

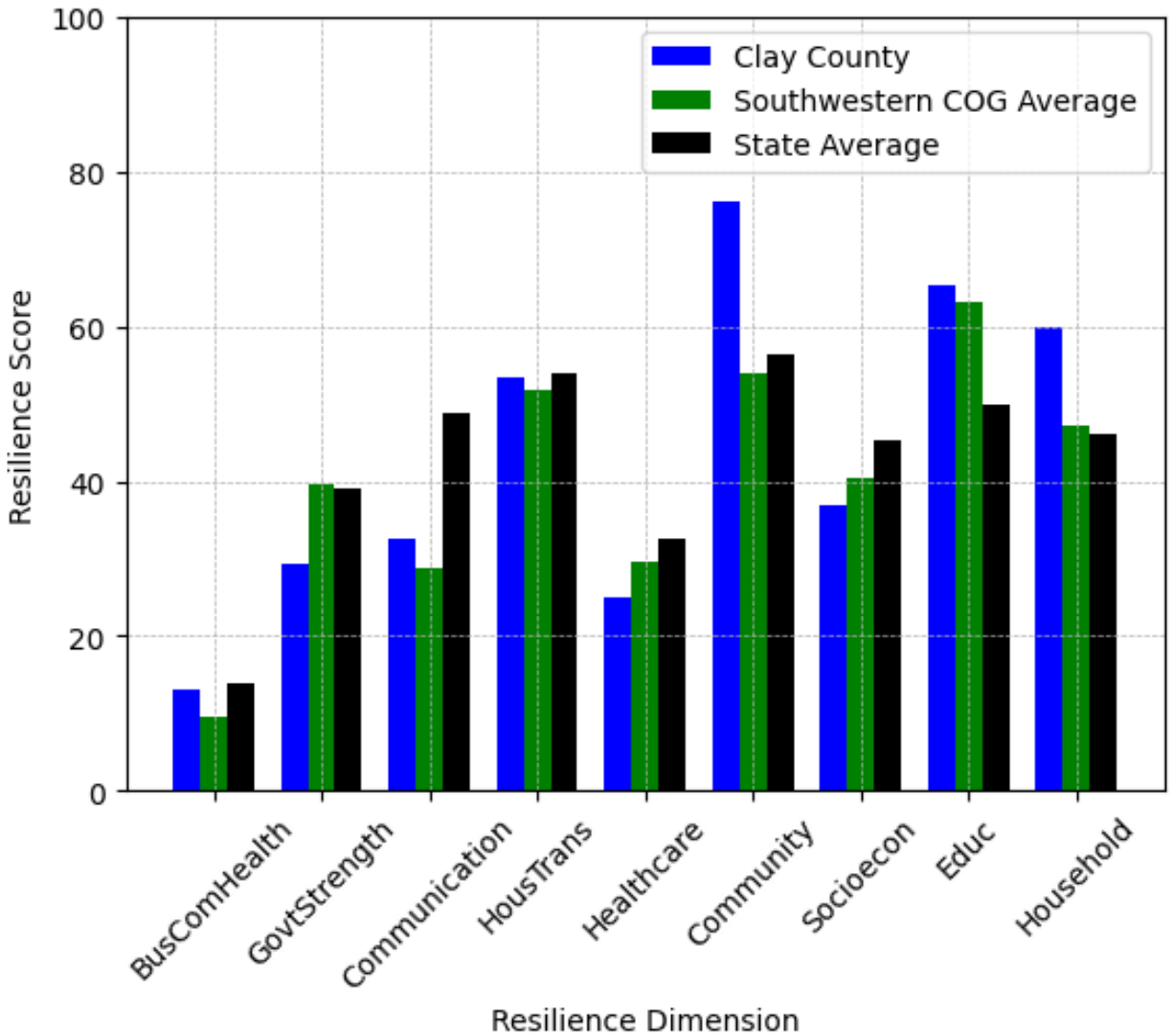
Household Characteristics: 59.94

This component examines factors such as the proportion of single-parent households, age distribution, and the proportion of individuals with disabilities, as these elements can influence a community's resilience and ability to recover from economic disruptions. Clay County's performance on this dimension is strong when compared to other North Carolina counties, ranking 13th in the state.

Notable variables for Clay County within this dimension include:

VARIABLE STRENGTH	FACTOR	CLAY COUNTY VALUE	NC COUNTY AVERAGE VALUE
Top 10 in NC, Strongest	Percentage of Single Parent Households	15.077%	36.132%
Top 10 in NC, 2nd Strongest	Percentage of Population with Limited English Proficiency	0.277%	1.454%
Top 10 in NC	Percentage of Population 17 and Younger	16.48%	20.37%
Bottom 10 in NC, Weakest	Percentage of Population 65 and Older	31.85%	20.53%

Clay County's Resilience Dimension Scores Over Time As Compared to the Region and State Averages



Note: Resilience Scores are normalized from 1 to 100 with the most resilient county scoring 100. The Resilience Score is determined based on a county's performance relative to NC's other 99 counties.

Notable Trends in Resilience Indicators, 2017-2022

NOTE: The key trends in the this section are identified based on change rates of at least .15 standard deviations over at least 5 years. Variables are positively oriented such that a positive trend indicates improved performance (e.g., 'improvement' in property crime is a lower crime rate, while 'decline' in property crime indicates a higher crime rate).

Trends in the Business Community Health dimension:

Total Employment Level: **199** (5-year change rate = **10.25%**, from 1,945 to 2,145)

↑ Change in rank from 96 to 94 in NC

Average Weekly Wages: **214 dollars** (5-year change rate = **33.91%**, from 631 to 845)

↑ Change in rank from 93 to 85 in NC

Real GDP in Current Dollars: **-18,683 dollars** (5-year change rate = **-7.97%**, from 234,326 to 215,643)

↓ Change in rank from 94 to 96 in NC

Ratio of Available Child Care Slots to Number of Children under Five: **-0.22** (5-year change rate = **-25.24%**, from 0.87 to 0.65)

↓ Change in rank from 13 to 32 in NC

Trends in the County Government Fiscal Strength dimension:

Adjusted Tax Base: **32,209 dollars** (5-year change rate = **22%**, from 146,396 to 178,605)

→ No change in rank

County Sales Tax: **1,721,834 dollars** (5-year change rate = **85.14%**, from 2,022,256 to 3,744,090)

↑ Change in rank from 92 to 88 in NC

Trends in the Housing & Transportation dimension:

Ratio of Average Estimated Home Value to Median Income : **20.87** (5-year change rate = **68.17%**, from 30.62 to 51.49)

↓ Change in rank from 95 to 97 in NC

Average Available Rent Money less the Average HUD Fair Market Rent: **164.4 dollars** (5-year change rate = **44.26%**, from 371.4 to 535.8)

↑ Change in rank from 87 to 82 in NC

Trends in the Healthcare dimension:

Opioid Deaths per 100,000 Residents: **-9.3** (5-year change rate = **-34.32%**, from 27.1 to 17.8)

↑ Change in rank from 56 to 7 in NC

Nurses per 10,000 Residents: **-6.1** (5-year change rate = **-7.79%**, from 78.3 to 72.2)

↓ Change in rank from 84 to 86 in NC

Physicians per 10,000 Residents: **2.49** (5-year change rate = **46.2%**, from 5.39 to 7.88)

↑ Change in rank from 80 to 72 in NC

Mental Health Professionals per 10,000 Residents: **-1.92** (5-year change rate = **-30.48%**, from 6.3 to 4.38)

↓ Change in rank from 40 to 69 in NC

Trends in the Community Cohesion dimension:

Property Crimes per 10,000 Residents: **-9.83** (4-year change rate = **-42.43%**, from 23.17 to 13.34)

↑ Change in rank from 65 to 42 in NC

Nonprofits Organizations per 1,000 Residents: **0.27** (5-year change rate = **5.72%**, from 4.74 to 5.01)

→ No change in rank

Trends in the Socioeconomics dimension:

Unemployment Rate (Q4): **-0.8 percent** (5-year change rate = **-17.14%**, from 4.7 to 3.9)

↑ Change in rank from 66 to 62 in NC

Median Household Income: **12,400 dollars** (5-year change rate = **27.43%**, from 45,200 to 57,600)

↑ Change in rank from 80 to 77 in NC

Trends in the Education dimension:

Graduation Percentage: **8.5 percent** (5-year change rate = **10.27%**, from 82.8 to 91.3)

↑ Change in rank from 84 to 23 in NC

Dropout Rate: **0.88 percent** (5-year change rate = **171.53%**, from 0.51 to 1.39)

↓ Change in rank from 2 to 38 in NC

3rd Grade Reading Proficiency: **-9.5 percent** (5-year change rate = **-14.84%**, from 64 to 54.5)

↓ Change in rank from 10 to 17 in NC

Postsecondary Enrollment Percentage: **0.18 percent** (5-year change rate = **116.71%**, from 0.16 to 0.34)

↑ Change in rank from 94 to 11 in NC

Data Advisements:

- This county has a population under 20,000 residents according to the US Census Bureau; in low population areas, some variable estimates can be less stable and more sensitive to changes.
- Science, Engineering, & Technology Industries Employment Percentage is not available for 2022 and was excluded from calculating this county's dimension and resilience score.
- Availability of Broadband Services is not available for 2022 and was excluded from calculating this county's dimension and resilience score.
- Adoption Rate of Broadband Services is not available for 2022 and was excluded from calculating this county's dimension and resilience score.