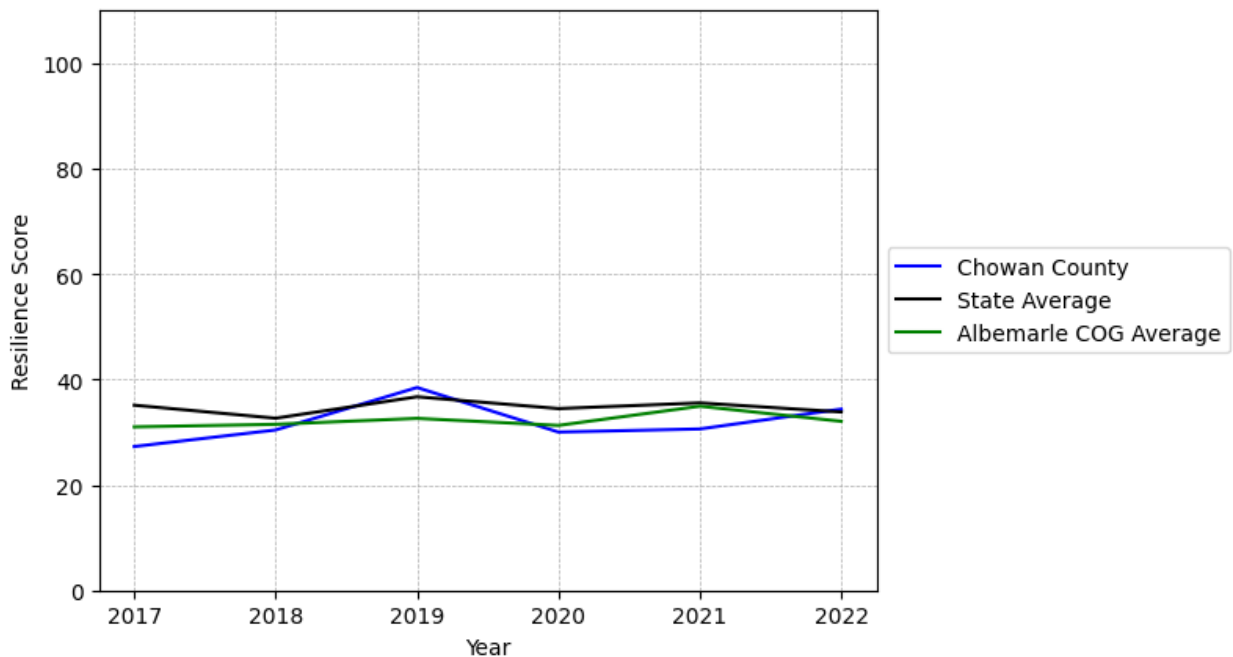


Chowan County Summary

Resilience Score: 34.37

In 2022, Chowan County achieved a Resilience Score of 34.37, which is average as compared to the North Carolina State average.

**Chowan County's Resilience Score Over Time
As Compared to the Region and State Averages**



Note: Resilience Scores are normalized from 1 to 100 with the most resilient county scoring 100. The Resilience Score is determined based on a county's performance relative to NC's other 99 counties.

Chowan County's Resilience Score is comprised of 9 distinct dimensions of resilience. Below are Chowan County's scores for 2022 on those 9 dimensions, and their rank relative to other North Carolina counties.

Business Community Health: 27.38

This component examines the strength and diversity of the local business community, including factors such as the number of businesses, employment levels, and industry diversity. Chowan County's performance on this dimension is fairly strong when compared to other North Carolina counties, ranking 8th in the state.

Notable variables for Chowan County within this dimension include:

VARIABLE STRENGTH	FACTOR	CHOWAN COUNTY VALUE	NC COUNTY AVERAGE VALUE
Top 10 in NC, Strongest	Ratio of Available Child Care Slots to Number of Children under Five	1.03	0.59
2nd Strongest	Private Sector Diversity	0.479	0.28
Weakest	Total Employment Level	5,123	45,758

County Government Fiscal Strength: 53

This component looks at the financial health of local governments, including their ability to generate revenue, manage debt, and maintain adequate reserves to weather economic downturns. Chowan County's performance on this dimension is average when compared to other North Carolina counties, ranking 30th in the state.

Notable variables for Chowan County within this dimension include:

VARIABLE STRENGTH	FACTOR	CHOWAN COUNTY VALUE	NC COUNTY AVERAGE VALUE
Strongest	Quick Ratio of County Government	24.69	16.4
2nd Strongest	Operations Ratio of County Government	1.2	1.11
Weakest	County Sales Tax	\$4,159,78	\$31,151,902

Communication: 39.05

This component assesses the availability and quality of communication infrastructure, such as broadband internet access, which is crucial for businesses and residents to stay connected and resilient during disruptions. Chowan County's performance on this dimension is fairly weak when compared to other North Carolina counties, ranking 74th in the state.

Notable variables for Chowan County within this dimension include:

VARIABLE STRENGTH	FACTOR	CHOWAN COUNTY VALUE	NC COUNTY AVERAGE VALUE
Strongest	In-Vehicle High-Speed Mobile Data Availability	0.31	0.37
2nd Strongest	Percentage of Population without Smartphones	18.95%	17.22%
Weakest	Broadband Availability	0.45	0.6

Housing & Transportation: 32.74

This component evaluates the accessibility and affordability of housing, as well as the availability of reliable transportation options, which are essential for a resilient workforce and economy. Chowan County's performance on this dimension is weak when compared to other North Carolina counties, ranking 94th in the state.

Notable variables for Chowan County within this dimension include:

VARIABLE STRENGTH	FACTOR	CHOWAN COUNTY VALUE	NC COUNTY AVERAGE VALUE
Top 10 in NC, Strongest	Percentage of Households with More Residents than Rooms	0.47%	2.1%
2nd Strongest	Percentage of People Driving Alone to Work	86.64%	86.36%
Bottom 10 in NC, Weakest	Percentage of Population without Vehicles	10.25%	5.75%

Healthcare: 33.25

The healthcare component examines the availability and quality of healthcare facilities, services, and professionals, which are critical for maintaining a healthy and productive workforce. Chowan County's performance on this dimension is average when compared to other North Carolina counties, ranking 28th in the state.

Notable variables for Chowan County within this dimension include:

VARIABLE STRENGTH	FACTOR	CHOWAN COUNTY VALUE	NC COUNTY AVERAGE VALUE
Strongest	Nursing Home Beds per 1,000 Residents of Age 65+	37.45	27.53
2nd Strongest	Physicians per 10,000 Residents	19.74	16.05
Weakest	Nurses per 10,000	143.6	262.64

Community Cohesion: 67.85

This component looks at the strength of social networks, community engagement, and the ability of residents to work together to address challenges and support one another during times of adversity. Chowan County's performance on this dimension is fairly strong when compared to other North Carolina counties, ranking 24th in the state.

Notable variables for Chowan County within this dimension include:

VARIABLE STRENGTH	FACTOR	CHOWAN COUNTY VALUE	NC COUNTY AVERAGE VALUE
Strongest	Nonprofits Organizations per 1,000 Residents	4.93	3.17
2nd Strongest	Violent Crimes per 10,000 Residents	1.38	3.07
Weakest	Percentage of Inactive Voters	11.7%	11.3%

Socioeconomics: 40.57

This component considers factors such as income levels, poverty rates, and inequality, which can impact a community's ability to withstand and recover from economic shocks. Chowan County's performance on this dimension is average when compared to other North Carolina counties, ranking 57th in the state.

Notable variables for Chowan County within this dimension include:

VARIABLE STRENGTH	FACTOR	CHOWAN COUNTY VALUE	NC COUNTY AVERAGE VALUE
Top 10 in NC, Strongest	Percentage of Population without Health Insurance	6.57%	11.23%
2nd Strongest	Population 25+ with at least a Bachelor's Degree	24.2%	24.4%
Weakest	Total Percentage of Population Below 150% Poverty Line	31.84%	25.93%

Education: 49.73

This component evaluates the quality of educational institutions and the educational attainment levels of the local population, which play a crucial role in developing a skilled and adaptable workforce. Chowan County's performance on this dimension is average when compared to other North Carolina counties, ranking 45th in the state.

Notable variables for Chowan County within this dimension include:

VARIABLE STRENGTH	FACTOR	CHOWAN COUNTY VALUE	NC COUNTY AVERAGE VALUE
Strongest	Student to Teacher Ratio	13	14
2nd Strongest	Graduation Percentage	90.9%	88.03%
Bottom 10 in NC, Weakest	Postsecondary Enrollment Percentage	14.15%	25.48%

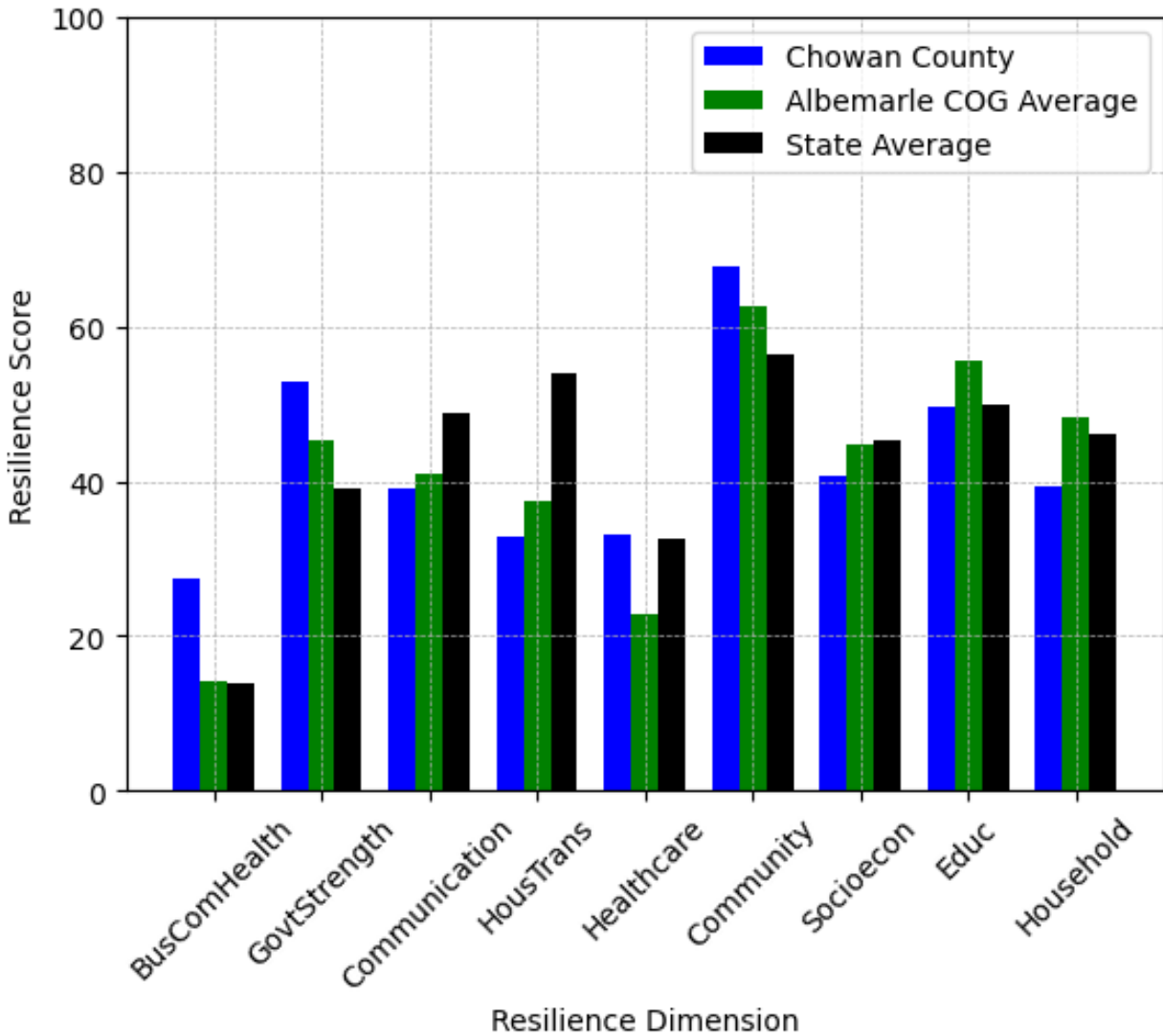
Household Characteristics: 39.28

This component examines factors such as the proportion of single-parent households, age distribution, and the proportion of individuals with disabilities, as these elements can influence a community's resilience and ability to recover from economic disruptions. Chowan County's performance on this dimension is average when compared to other North Carolina counties, ranking 71st in the state.

Notable variables for Chowan County within this dimension include:

VARIABLE STRENGTH	FACTOR	CHOWAN COUNTY VALUE	NC COUNTY AVERAGE VALUE
Strongest	Percentage of Population with Limited English Proficiency	0.759%	1.454%
2nd Strongest	Percentage of Population 17 and Younger	19.63%	20.37%
Weakest	Percentage of Population 65 and Older	25.62%	20.53%

Chowan County's Resilience Dimension Scores Over Time As Compared to the Region and State Averages



Note: Resilience Scores are normalized from 1 to 100 with the most resilient county scoring 100. The Resilience Score is determined based on a county's performance relative to NC's other 99 counties.

Notable Trends in Resilience Indicators, 2017-2022

NOTE: The key trends in the this section are identified based on change rates of at least .15 standard deviations over at least 5 years. Variables are positively oriented such that a positive trend indicates improved performance (e.g., 'improvement' in property crime is a lower crime rate, while 'decline' in property crime indicates a higher crime rate).

Trends in the Business Community Health dimension:

Total Employment Level: **512** (5-year change rate = **11.11%**, from 4,610 to 5,123)

↑ Change in rank from 84 to 82 in NC

Average Weekly Wages: **302 dollars** (5-year change rate = **40.37%**, from 748 to 1,050)

↑ Change in rank from 36 to 15 in NC

Real GDP in Current Dollars: **-43,191 dollars** (5-year change rate = **-6.83%**, from 632,338 to 589,147)

↓ Change in rank from 80 to 81 in NC

Trends in the County Government Fiscal Strength dimension:

Adjusted Tax Base: **15,000 dollars** (5-year change rate = **15.64%**, from 95,888 to 110,888)

↓ Change in rank from 47 to 48 in NC

County Sales Tax: **1,350,243 dollars** (5-year change rate = **48.06%**, from 2,809,537 to 4,159,780)

↓ Change in rank from 84 to 86 in NC

Trends in the Housing & Transportation dimension:

Ratio of Average Estimated Home Value to Median Income : **7.45** (5-year change rate = **34.27%**, from 21.73 to 29.18)

→ No change in rank

Average Available Rent Money less the Average HUD Fair Market Rent: **95.2 dollars** (5-year change rate = **23.65%**, from 402.5 to 497.7)

↓ Change in rank from 78 to 90 in NC

Trends in the Healthcare dimension:

Opioid Deaths per 100,000 Residents: **0.5** (5-year change rate = **1.41%**, from 35.4 to 35.9)

↑ Change in rank from 84 to 48 in NC

Nurses per 10,000 Residents: **-14.58** (5-year change rate = **-9.22%**, from 158.18 to 143.6)

↓ Change in rank from 54 to 59 in NC

Physicians per 10,000 Residents: **-1.89** (5-year change rate = **-8.74%**, from 21.63 to 19.74)

↓ Change in rank from 19 to 21 in NC

Trends in the Community Cohesion dimension:

Violent Crimes per 10,000 Residents: **-3.4** (4-year change rate = **-71.12%**, from 4.78 to 1.38)

↑ Change in rank from 85 to 22 in NC

Property Crimes per 10,000 Residents: **-14.45** (4-year change rate = **-52.91%**, from 27.31 to 12.86)

↑ Change in rank from 76 to 37 in NC

Nonprofits Organizations per 1,000 Residents: **4.59** (5-year change rate = **1,341.08%**, from 0.34 to 4.93)

↑ Change in rank from 97 to 11 in NC

Trends in the Socioeconomics dimension:

Unemployment Rate (Q4): **-1 percent** (5-year change rate = **-20.27%**, from 4.9 to 3.9)

↑ Change in rank from 73 to 66 in NC

Median Household Income: **11,800 dollars** (5-year change rate = **25.6%**, from 46,100 to 57,900)

↑ Change in rank from 79 to 76 in NC

Trends in the Education dimension:

Graduation Percentage: **-0.3 percent** (5-year change rate = **-0.33%**, from 91.2 to 90.9)

↓ Change in rank from 22 to 28 in NC

Dropout Rate: **-0.43 percent** (5-year change rate = **-24.39%**, from 1.77 to 1.34)

↓ Change in rank from 32 to 35 in NC

Student to Teacher Ratio: **-1** (4-year change rate = **-8.12%**, from 14 to 13)

↑ Change in rank from 29 to 22 in NC

3rd Grade Reading Proficiency: **-7.8 percent** (5-year change rate = **-15.12%**, from 51.6 to 43.8)

↑ Change in rank from 62 to 50 in NC

Data Advisements:

- This county has a population under 20,000 residents according to the US Census Bureau; in low population areas, some variable estimates can be less stable and more sensitive to changes.
- Availability of Broadband Services is not available for 2022 and was excluded from calculating this county's dimension and resilience score.
- Adoption Rate of Broadband Services is not available for 2022 and was excluded from calculating this county's dimension and resilience score.