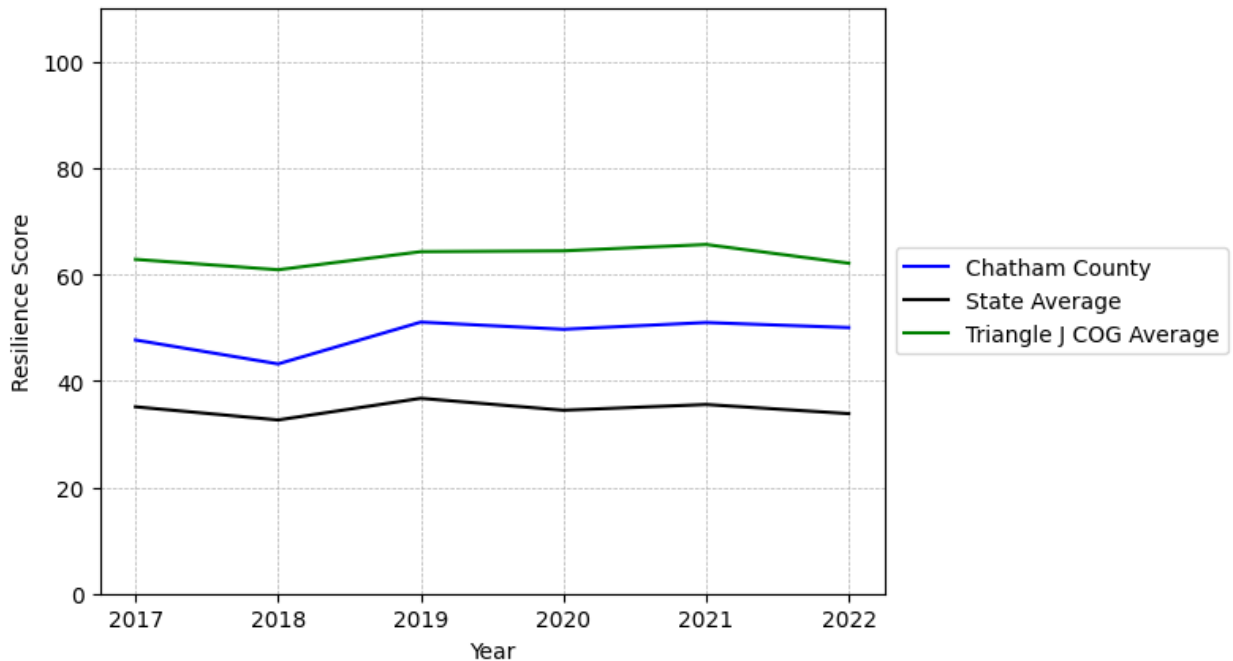


Chatham County Summary

Resilience Score: 50.01

In 2022, Chatham County achieved a Resilience Score of 50.01, which is fairly strong as compared to the North Carolina State average.

**Chatham County's Resilience Score Over Time
As Compared to the Region and State Averages**



Note: Resilience Scores are normalized from 1 to 100 with the most resilient county scoring 100. The Resilience Score is determined based on a county's performance relative to NC's other 99 counties.

Chatham County's Resilience Score is comprised of 9 distinct dimensions of resilience. Below are Chatham County's scores for 2022 on those 9 dimensions, and their rank relative to other North Carolina counties.

Business Community Health: 20.1

This component examines the strength and diversity of the local business community, including factors such as the number of businesses, employment levels, and industry diversity. Chatham County's performance on this dimension is average when compared to other North Carolina counties, ranking 16th in the state.

Notable variables for Chatham County within this dimension include:

VARIABLE STRENGTH	FACTOR	CHATHAM COUNTY VALUE	NC COUNTY AVERAGE VALUE
Top 10 in NC, Strongest	Percentage of Companies in Science, Engineering, & Technology Industries	13.86%	6.13%
2nd Strongest	Science, Engineering, & Technology Industries Employment Percentage	1.99%	1.79%
Weakest	Private Sector Diversity	0.198	0.28

County Government Fiscal Strength: 41.14

This component looks at the financial health of local governments, including their ability to generate revenue, manage debt, and maintain adequate reserves to weather economic downturns. Chatham County's performance on this dimension is average when compared to other North Carolina counties, ranking 54th in the state.

Notable variables for Chatham County within this dimension include:

VARIABLE STRENGTH	FACTOR	CHATHAM COUNTY VALUE	NC COUNTY AVERAGE VALUE
Top 10 in NC, Strongest	Capital Assets Condition Ratio of County Government	0.7	0.51
2nd Strongest	Dependency Ratio of County Government	0.11	0.16
Bottom 10 in NC, Weakest	Debt Service Ratio of County Government	0.19	0.07

Communication: 50.8

This component assesses the availability and quality of communication infrastructure, such as broadband internet access, which is crucial for businesses and residents to stay connected and resilient during disruptions. Chatham County's performance on this dimension is average when compared to other North Carolina counties, ranking 47th in the state.

Notable variables for Chatham County within this dimension include:

VARIABLE STRENGTH	FACTOR	CHATHAM COUNTY VALUE	NC COUNTY AVERAGE VALUE
Strongest	Percentage of Population without Smartphones	14.47%	17.22%
2nd Strongest	Local High-Speed Mobile Data Availability	0.67	0.66
Weakest	In-Vehicle High-Speed Mobile Data Availability	0.26	0.37

Housing & Transportation: 87.65

This component evaluates the accessibility and affordability of housing, as well as the availability of reliable transportation options, which are essential for a resilient workforce and economy. Chatham County's performance on this dimension is strong when compared to other North Carolina counties, ranking 8th in the state.

Notable variables for Chatham County within this dimension include:

VARIABLE STRENGTH	FACTOR	CHATHAM COUNTY VALUE	NC COUNTY AVERAGE VALUE
Top 10 in NC, Strongest	Percentage of Owner-Occupied Homes	72.68%	57.87%
Top 10 in NC, 2nd Strongest	Percentage of Population without Vehicles	3.09%	5.75%
Weakest	Percentage of People with Commute Times Over 45 Minutes	20.05%	16.69%

Healthcare: 19.93

The healthcare component examines the availability and quality of healthcare facilities, services, and professionals, which are critical for maintaining a healthy and productive workforce. Chatham County's performance on this dimension is fairly weak when compared to other North Carolina counties, ranking 70th in the state.

Notable variables for Chatham County within this dimension include:

VARIABLE STRENGTH	FACTOR	CHATHAM COUNTY VALUE	NC COUNTY AVERAGE VALUE
Strongest	Opioid Deaths per 100,000 Residents	29.5	38.73
2nd Strongest	Mental Health	4.84	6.6

	Professionals per 10,000 Residents		
Weakest	Nursing Home Beds per 1,000 Residents of Age 65+	18.7	27.53

Community Cohesion: 78.88

This component looks at the strength of social networks, community engagement, and the ability of residents to work together to address challenges and support one another during times of adversity. Chatham County's performance on this dimension is strong when compared to other North Carolina counties, ranking 9th in the state.

Notable variables for Chatham County within this dimension include:

VARIABLE STRENGTH	FACTOR	CHATHAM COUNTY VALUE	NC COUNTY AVERAGE VALUE
Top 10 in NC, Strongest	Percentage of Inactive Voters	6.87%	11.3%
2nd Strongest	Yearly Population Change Percentage	2.579%	0.906%
Weakest	Nonprofits Organizations per 1,000 Residents	3.18	3.17

Socioeconomics: 82.46

This component considers factors such as income levels, poverty rates, and inequality, which can impact a community's ability to withstand and recover from economic shocks. Chatham County's performance on this dimension is strong when compared to other North Carolina counties, ranking 5th in the state.

Notable variables for Chatham County within this dimension include:

VARIABLE STRENGTH	FACTOR	CHATHAM COUNTY VALUE	NC COUNTY AVERAGE VALUE
Top 10 in NC, Strongest	Percentage of Households with Income over \$200k	17.9%	5.28%
Top 10 in NC, 2nd Strongest	Population 25+ with at least a Bachelor's Degree	46.52%	24.4%
Top 10 in NC	Median Household Income	\$95,5	\$70,088
Bottom 10 in NC, Weakest	Gini Coefficient (Income Inequality)	0.5	0.46

Education: 59.8

This component evaluates the quality of educational institutions and the educational attainment levels of the local population, which play a crucial role in developing a skilled and adaptable workforce. Chatham County's performance on this dimension is fairly strong when compared to other North Carolina counties, ranking 20th in the state.

Notable variables for Chatham County within this dimension include:

VARIABLE STRENGTH	FACTOR	CHATHAM COUNTY VALUE	NC COUNTY AVERAGE VALUE
Strongest	Local LEA Financial Resources (per ADM)	\$17,141	\$8,683
2nd Strongest	3rd Grade Reading Proficiency	49.5%	43.1%
Weakest	Teacher Attrition Rate	0.13	0.12

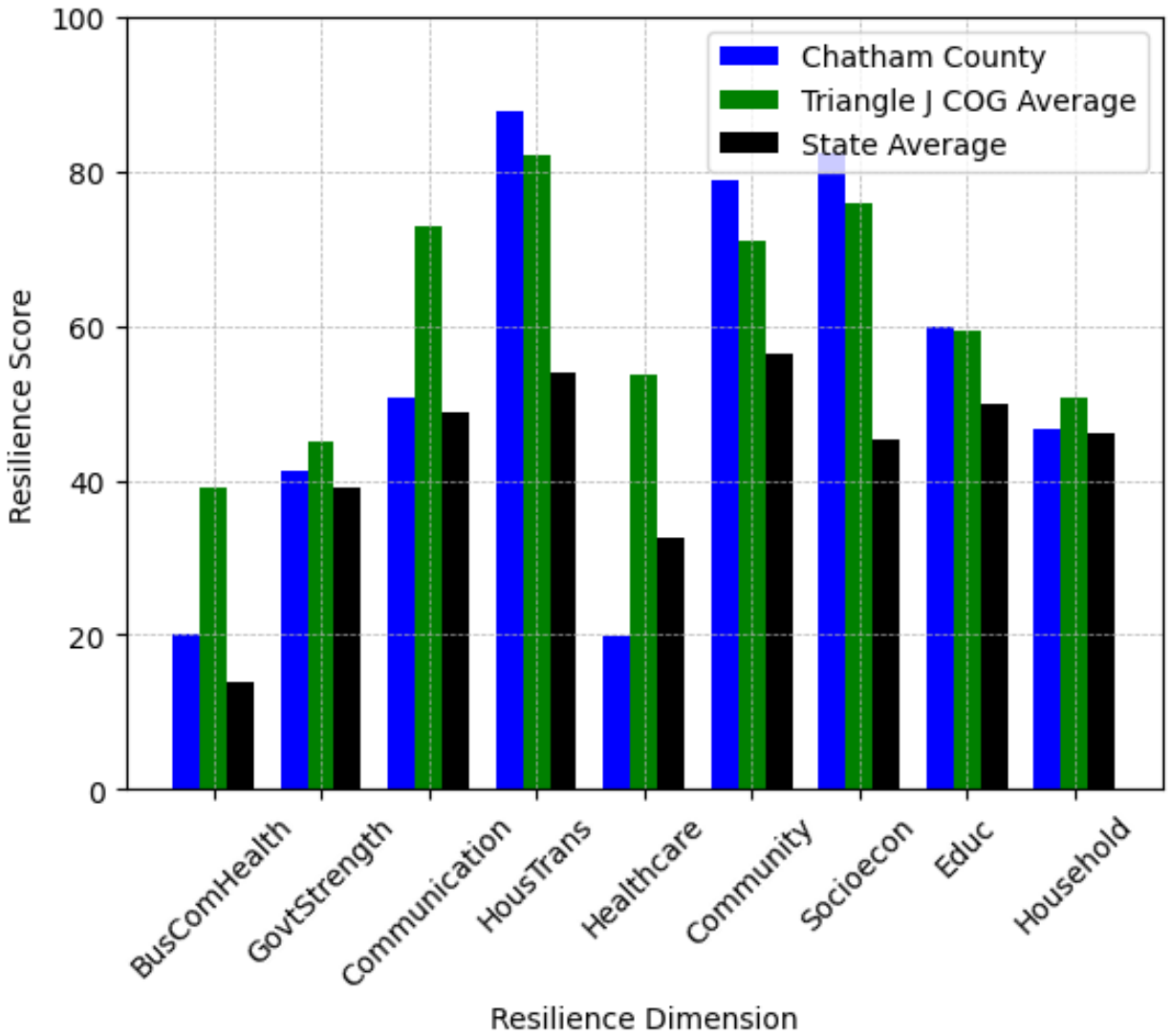
Household Characteristics: 46.72

This component examines factors such as the proportion of single-parent households, age distribution, and the proportion of individuals with disabilities, as these elements can influence a community's resilience and ability to recover from economic disruptions. Chatham County's performance on this dimension is average when compared to other North Carolina counties, ranking 45th in the state.

Notable variables for Chatham County within this dimension include:

VARIABLE STRENGTH	FACTOR	CHATHAM COUNTY VALUE	NC COUNTY AVERAGE VALUE
Top 10 in NC, Strongest	Percentage of Single Parent Households	22.159%	36.132%
2nd Strongest	Percentage of Population with a Disability	12.899%	16.566%
Bottom 10 in NC, Weakest	Percentage of Population with Limited English Proficiency	3.163%	1.454%

Chatham County's Resilience Dimension Scores Over Time As Compared to the Region and State Averages



Note: Resilience Scores are normalized from 1 to 100 with the most resilient county scoring 100. The Resilience Score is determined based on a county's performance relative to NC's other 99 counties.

Notable Trends in Resilience Indicators, 2017-2022

NOTE: The key trends in the this section are identified based on change rates of at least .15 standard deviations over at least 5 years. Variables are positively oriented such that a positive trend indicates improved performance (e.g., 'improvement' in property crime is a lower crime rate, while 'decline' in property crime indicates a higher crime rate).

Trends in the Business Community Health dimension:

Total Employment Level: **2,258** (5-year change rate = **15.05%**, from 14,998 to 17,256)

↑ Change in rank from 55 to 49 in NC

Average Weekly Wages: **224 dollars** (5-year change rate = **29.2%**, from 767 to 991)

↑ Change in rank from 31 to 27 in NC

Real GDP in Current Dollars: **150,335 dollars** (5-year change rate = **8.66%**, from 1,736,897 to 1,887,232)

↑ Change in rank from 52 to 47 in NC

Trends in the County Government Fiscal Strength dimension:

Adjusted Tax Base: **30,727 dollars** (5-year change rate = **24.36%**, from 126,154 to 156,881)

↑ Change in rank from 21 to 19 in NC

County Sales Tax: **11,439,368 dollars** (5-year change rate = **90.42%**, from 12,651,678 to 24,091,046)

↑ Change in rank from 42 to 34 in NC

Trends in the Housing & Transportation dimension:

Ratio of Average Estimated Home Value to Median Income : **3.05** (5-year change rate = **34.15%**, from 8.94 to 11.99)

↑ Change in rank from 64 to 63 in NC

Average Available Rent Money less the Average HUD Fair Market Rent: **299.8 dollars** (5-year change rate = **39.16%**, from 765.5 to 1,065.3)

↓ Change in rank from 7 to 16 in NC

Trends in the Healthcare dimension:

Opioid Deaths per 100,000 Residents: **15.5** (5-year change rate = **110.71%**, from 14 to 29.5)

↓ Change in rank from 18 to 29 in NC

Physicians per 10,000 Residents: **2.62** (5-year change rate = **46.21%**, from 5.67 to 8.29)

↑ Change in rank from 78 to 68 in NC

Mental Health Professionals per 10,000 Residents: **-0.41** (5-year change rate = **-7.81%**, from 5.25 to 4.84)

↓ Change in rank from 50 to 60 in NC

Trends in the Community Cohesion dimension:

Property Crimes per 10,000 Residents: **-3.29** (4-year change rate = **-23.21%**, from 14.18 to 10.89)

↑ Change in rank from 28 to 22 in NC

Nonprofits Organizations per 1,000 Residents: **0.36** (5-year change rate = **12.9%**, from 2.82 to 3.18)

→ No change in rank

Trends in the Socioeconomics dimension:

Unemployment Rate (Q4): **-0.5 percent** (5-year change rate = **-13.89%**, from 3.6 to 3.1)

↓ Change in rank from 6 to 13 in NC

Median Household Income: **22,200 dollars** (5-year change rate = **30.29%**, from 73,300 to 95,500)

↓ Change in rank from 6 to 10 in NC

Trends in the Education dimension:

Graduation Percentage: **1.3 percent** (5-year change rate = **1.47%**, from 88.6 to 89.9)

↑ Change in rank from 38 to 33 in NC

Dropout Rate: **-0.26 percent** (5-year change rate = **-16.89%**, from 1.55 to 1.29)

↓ Change in rank from 23 to 34 in NC

Student to Teacher Ratio: **-1** (4-year change rate = **-5.52%**, from 14 to 14)

↑ Change in rank from 36 to 34 in NC

3rd Grade Reading Proficiency: **-10 percent** (5-year change rate = **-16.81%**, from 59.5 to 49.5)

↓ Change in rank from 26 to 29 in NC

Data Advisements:

- Availability of Broadband Services is not available for 2022 and was excluded from calculating this county's dimension and resilience score.
- Adoption Rate of Broadband Services is not available for 2022 and was excluded from calculating this county's dimension and resilience score.