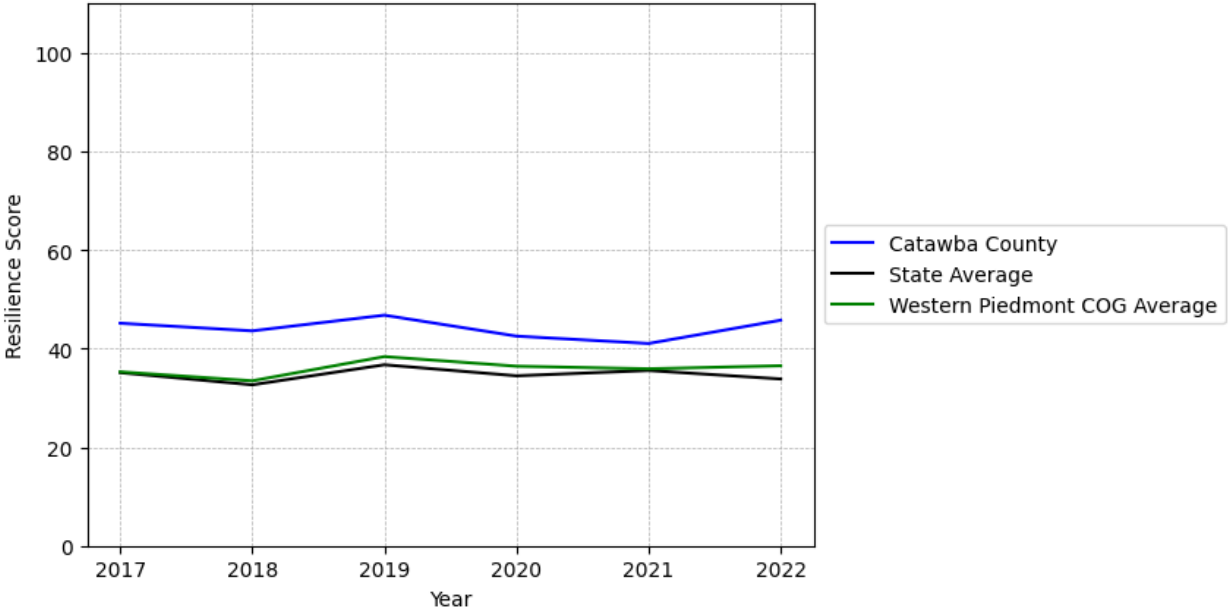


Catawba County Summary

Resilience Score: 45.75

In 2022, Catawba County achieved a Resilience Score of 45.75, which is fairly strong as compared to the North Carolina State average.

**Catawba County's Resilience Score Over Time
As Compared to the Region and State Averages**



Note: Resilience Scores are normalized from 1 to 100 with the most resilient county scoring 100. The Resilience Score is determined based on a county's performance relative to NC's other 99 counties.

Catawba County's Resilience Score is comprised of 9 distinct dimensions of resilience. Below are Catawba County's scores for 2022 on those 9 dimensions, and their rank relative to other North Carolina counties.

Business Community Health: 24.13

This component examines the strength and diversity of the local business community, including factors such as the number of businesses, employment levels, and industry diversity. Catawba County's performance on this dimension is fairly strong when compared to other North Carolina counties, ranking 10th in the state.

Notable variables for Catawba County within this dimension include:

VARIABLE STRENGTH	FACTOR	CATAWBA COUNTY VALUE	NC COUNTY AVERAGE VALUE
Top 10 in NC, Strongest	Science, Engineering, & Technology Industries Employment Percentage	3.88%	1.79%
Top 10 in NC, 2nd Strongest	Total Employment Level	91,192	45,758
Weakest	Private Sector Diversity	0.116	0.28

County Government Fiscal Strength: 49.58

This component looks at the financial health of local governments, including their ability to generate revenue, manage debt, and maintain adequate reserves to weather economic downturns. Catawba County's performance on this dimension is average when compared to other North Carolina counties, ranking 38th in the state.

Notable variables for Catawba County within this dimension include:

VARIABLE STRENGTH	FACTOR	CATAWBA COUNTY VALUE	NC COUNTY AVERAGE VALUE
Strongest	Capital Assets Condition Ratio of County Government	0.63	0.51
2nd Strongest	County Sales Tax	\$54,374,968	\$31,151,902
Weakest	Debt Service Ratio of County Government	0.1	0.07

Communication: 72.13

This component assesses the availability and quality of communication infrastructure, such as broadband internet access, which is crucial for businesses and residents to stay connected and resilient during disruptions. Catawba County's performance on this dimension is strong when compared to other North Carolina counties, ranking 15th in the state.

Notable variables for Catawba County within this dimension include:

VARIABLE STRENGTH	FACTOR	CATAWBA COUNTY VALUE	NC COUNTY AVERAGE VALUE
Strongest	Local High-Speed Mobile Data Availability	0.91	0.66
2nd Strongest	In-Vehicle High-Speed Mobile Data Availability	0.64	0.37
Weakest	Broadband Availability	0.62	0.6

Housing & Transportation: 75.7

This component evaluates the accessibility and affordability of housing, as well as the availability of reliable transportation options, which are essential for a resilient workforce and economy. Catawba County's performance on this dimension is fairly strong when compared to other North Carolina counties, ranking 23rd in the state.

Notable variables for Catawba County within this dimension include:

VARIABLE STRENGTH	FACTOR	CATAWBA COUNTY VALUE	NC COUNTY AVERAGE VALUE
Strongest	Ratio of Average Estimated Home Value to Median Income	3.01	13.67
2nd Strongest	Percentage of People with Commute Times Over 45 Minutes	10.45%	16.69%
Weakest	Percentage of Households with More Residents than Rooms	2.47%	2.1%

Healthcare: 35.57

The healthcare component examines the availability and quality of healthcare facilities, services, and professionals, which are critical for maintaining a healthy and productive workforce. Catawba County's performance on this dimension is average when compared to other North Carolina counties, ranking 21st in the state.

Notable variables for Catawba County within this dimension include:

VARIABLE STRENGTH	FACTOR	CATAWBA COUNTY VALUE	NC COUNTY AVERAGE VALUE
Strongest	Nurses per 10,000 Residents	470.97	262.64

2nd Strongest	Physicians per 10,000 Residents	24.94	16.05
Weakest	Nursing Home Beds per 1,000 Residents of Age 65+	23.13	27.53

Community Cohesion: 56.75

This component looks at the strength of social networks, community engagement, and the ability of residents to work together to address challenges and support one another during times of adversity. Catawba County's performance on this dimension is average when compared to other North Carolina counties, ranking 52nd in the state.

Notable variables for Catawba County within this dimension include:

VARIABLE STRENGTH	FACTOR	CATAWBA COUNTY VALUE	NC COUNTY AVERAGE VALUE
Strongest	Yearly Population Change Percentage	1.106%	0.906%
2nd Strongest	Percentage of Inactive Voters	10.6%	11.3%
Weakest	Property Crimes per 10,000 Residents	19.1	15.74

Socioeconomics: 51.73

This component considers factors such as income levels, poverty rates, and inequality, which can impact a community's ability to withstand and recover from economic shocks. Catawba County's performance on this dimension is average when compared to other North Carolina counties, ranking 36th in the state.

Notable variables for Catawba County within this dimension include:

VARIABLE STRENGTH	FACTOR	CATAWBA COUNTY VALUE	NC COUNTY AVERAGE VALUE
Strongest	Percentage of Households Spending more than 30% Income on Housing	20.39%	24.53%
2nd Strongest	Percentage of Households with Income over \$200k	5.75%	5.28%
Weakest	Percentage of Population without Health Insurance	11.84%	11.23%

Education: 47.19

This component evaluates the quality of educational institutions and the educational attainment levels of the local population, which play a crucial role in developing a skilled and adaptable workforce. Catawba County's performance on this dimension is average when compared to other North Carolina counties, ranking 51st in the state.

Notable variables for Catawba County within this dimension include:

VARIABLE STRENGTH	FACTOR	CATAWBA COUNTY VALUE	NC COUNTY AVERAGE VALUE
Strongest	Dropout Rate	0.98%	1.65%
2nd Strongest	Local LEA Financial Resources (per ADM)	\$8,575	\$8,683
Weakest	Student to Teacher Ratio	15	14

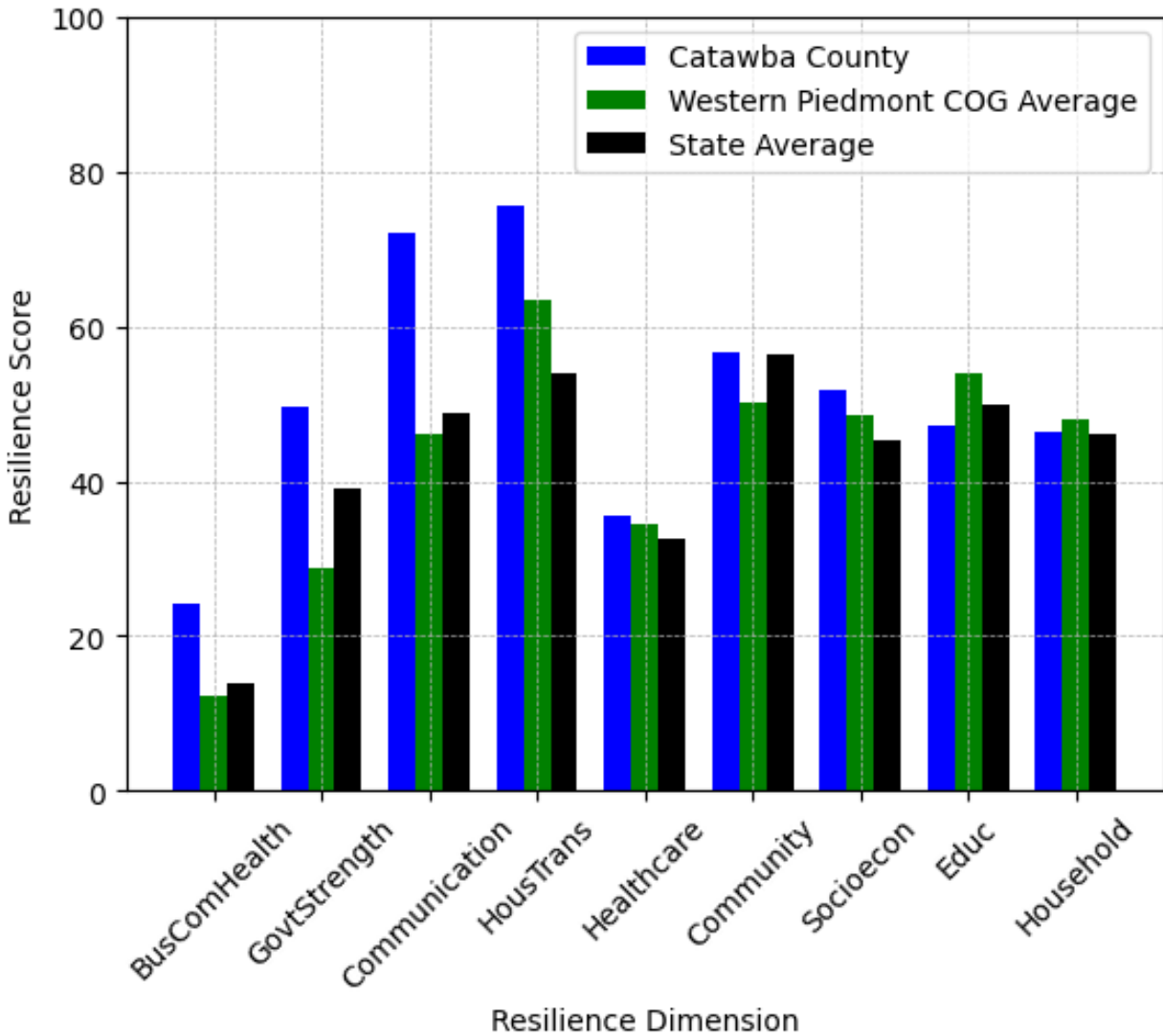
Household Characteristics: 46.4

This component examines factors such as the proportion of single-parent households, age distribution, and the proportion of individuals with disabilities, as these elements can influence a community's resilience and ability to recover from economic disruptions. Catawba County's performance on this dimension is average when compared to other North Carolina counties, ranking 46th in the state.

Notable variables for Catawba County within this dimension include:

VARIABLE STRENGTH	FACTOR	CATAWBA COUNTY VALUE	NC COUNTY AVERAGE VALUE
Strongest	Percentage of Population with a Disability	14.007%	16.566%
2nd Strongest	Percentage of Population 65 and Older	18.28%	20.53%
Weakest	Percentage of Population with Limited English Proficiency	1.923%	1.454%

Catawba County's Resilience Dimension Scores Over Time As Compared to the Region and State Averages



Note: Resilience Scores are normalized from 1 to 100 with the most resilient county scoring 100. The Resilience Score is determined based on a county's performance relative to NC's other 99 counties.

Notable Trends in Resilience Indicators, 2017-2022

NOTE: The key trends in the this section are identified based on change rates of at least .15 standard deviations over at least 5 years. Variables are positively oriented such that a positive trend indicates improved performance (e.g., 'improvement' in property crime is a lower crime rate, while 'decline' in property crime indicates a higher crime rate).

Trends in the Business Community Health dimension:

Total Employment Level: **2,747** (5-year change rate = **3.11%**, from 88,445 to 91,192)

→ No change in rank

Average Weekly Wages: **211 dollars** (5-year change rate = **25.06%**, from 842 to 1,053)

↑ Change in rank from 16 to 13 in NC

Real GDP in Current Dollars: **212,362 dollars** (5-year change rate = **2.35%**, from 9,029,152 to 9,241,514)

↓ Change in rank from 10 to 12 in NC

Trends in the County Government Fiscal Strength dimension:

Adjusted Tax Base: **11,694 dollars** (5-year change rate = **11.17%**, from 104,698 to 116,392)

↓ Change in rank from 39 to 46 in NC

County Sales Tax: **15,866,084 dollars** (5-year change rate = **41.2%**, from 38,508,884 to 54,374,968)

↓ Change in rank from 13 to 15 in NC

Trends in the Housing & Transportation dimension:

Ratio of Average Estimated Home Value to Median Income : **0.69** (5-year change rate = **29.62%**, from 2.32 to 3.01)

↑ Change in rank from 15 to 14 in NC

Average Available Rent Money less the Average HUD Fair Market Rent: **393.8 dollars** (5-year change rate = **70.37%**, from 559.6 to 953.4)

↑ Change in rank from 40 to 31 in NC

Trends in the Healthcare dimension:

Opioid Deaths per 100,000 Residents: **9.8** (5-year change rate = **36.03%**, from 27.2 to 37)

↑ Change in rank from 57 to 52 in NC

Nurses per 10,000 Residents: **51.97** (5-year change rate = **12.4%**, from 419 to 470.97)

↑ Change in rank from 14 to 12 in NC

Physicians per 10,000 Residents: **-0.45** (5-year change rate = **-1.77%**, from 25.39 to 24.94)

↓ Change in rank from 11 to 14 in NC

Trends in the Community Cohesion dimension:

Violent Crimes per 10,000 Residents: **0.23** (4-year change rate = **9.38%**, from 2.44 to 2.67)

↑ Change in rank from 57 to 52 in NC

Property Crimes per 10,000 Residents: **-6.19** (4-year change rate = **-24.48%**, from 25.29 to 19.1)

↑ Change in rank from 72 to 71 in NC

Nonprofits Organizations per 1,000 Residents: **1.07** (5-year change rate = **55.98%**, from 1.91 to 2.98)

↑ Change in rank from 81 to 56 in NC

Trends in the Socioeconomics dimension:

Unemployment Rate (Q4): **-0.5 percent** (5-year change rate = **-12.93%**, from 3.9 to 3.4)

↓ Change in rank from 20 to 30 in NC

Median Household Income: **17,600 dollars** (5-year change rate = **33.85%**, from 52,000 to 69,600)

↑ Change in rank from 50 to 44 in NC

Trends in the Education dimension:

Graduation Percentage: **-3.73 percent** (5-year change rate = **-4.03%**, from 92.57 to 88.83)

↓ Change in rank from 10 to 44 in NC

Dropout Rate: **-0.3 percent** (5-year change rate = **-23.65%**, from 1.28 to 0.98)

↓ Change in rank from 13 to 23 in NC

Student to Teacher Ratio: **-1** (4-year change rate = **-6.38%**, from 16 to 15)

↑ Change in rank from 83 to 69 in NC

3rd Grade Reading Proficiency: **-14.8 percent** (5-year change rate = **-26.51%**, from 55.85 to 41.04)

↓ Change in rank from 40 to 60 in NC

Data Advisements:

- Availability of Broadband Services is not available for 2022 and was excluded from calculating this county's dimension and resilience score.
- Adoption Rate of Broadband Services is not available for 2022 and was excluded from calculating this county's dimension and resilience score.