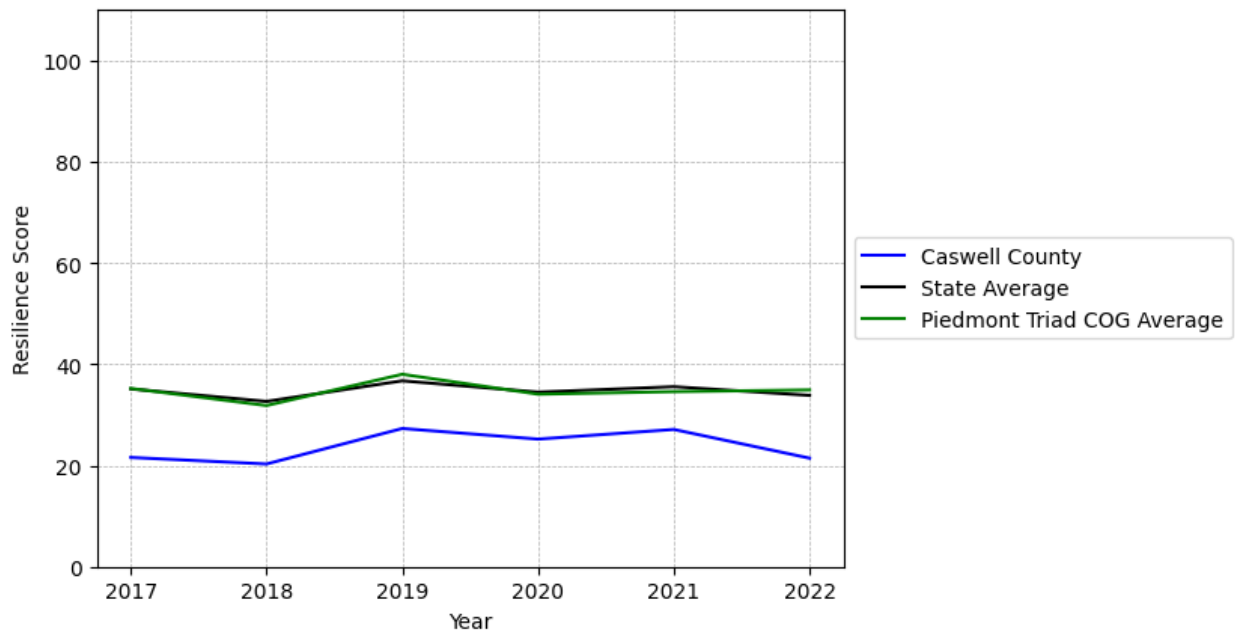


Caswell County Summary

Resilience Score: 21.44

In 2022, Caswell County achieved a Resilience Score of 21.44, which is fairly weak as compared to the North Carolina State average.

**Caswell County's Resilience Score Over Time
As Compared to the Region and State Averages**



Note: Resilience Scores are normalized from 1 to 100 with the most resilient county scoring 100. The Resilience Score is determined based on a county's performance relative to NC's other 99 counties.

Caswell County's Resilience Score is comprised of 9 distinct dimensions of resilience. Below are Caswell County's scores for 2022 on those 9 dimensions, and their rank relative to other North Carolina counties.

Business Community Health: 6.29

This component examines the strength and diversity of the local business community, including factors such as the number of businesses, employment levels, and industry diversity. Caswell County's performance on this dimension is fairly weak when compared to other North Carolina counties, ranking 83rd in the state.

Notable variables for Caswell County within this dimension include:

VARIABLE STRENGTH	FACTOR	CASWELL COUNTY VALUE	NC COUNTY AVERAGE VALUE
Top 10 in NC, Strongest	Private Sector Diversity	0.551	0.28
2nd Strongest	Average Weekly Wages	\$886	\$951
Bottom 10 in NC	Total Employment Level	2,826	45,758
Bottom 10 in NC, Weakest	Ratio of Available Child Care Slots to Number of Children under Five	0.32	0.59

County Government Fiscal Strength: 11.12

This component looks at the financial health of local governments, including their ability to generate revenue, manage debt, and maintain adequate reserves to weather economic downturns. Caswell County's performance on this dimension is weak when compared to other North Carolina counties, ranking 92nd in the state.

Notable variables for Caswell County within this dimension include:

VARIABLE STRENGTH	FACTOR	CASWELL COUNTY VALUE	NC COUNTY AVERAGE VALUE
Strongest	Operations Ratio of County Government	N/A	1.11
2nd Strongest	Dependency Ratio of County Government	N/A	0.16
Weakest	Adjusted Tax Base	\$78,924	\$124,092

Communication: 30.47

This component assesses the availability and quality of communication infrastructure, such as broadband internet access, which is crucial for businesses and residents to stay connected and resilient during disruptions. Caswell County's performance on this dimension is weak when compared to other North Carolina counties, ranking 88th in the state.

Notable variables for Caswell County within this dimension include:

VARIABLE STRENGTH	FACTOR	CASWELL COUNTY VALUE	NC COUNTY AVERAGE VALUE
Strongest	In-Vehicle High-Speed Mobile Data Availability	0.26	0.37
2nd Strongest	Local High-Speed Mobile Data Availability	0.57	0.66
Bottom 10 in NC, Weakest	Broadband Availability	0.34	0.6

Housing & Transportation: 54.44

This component evaluates the accessibility and affordability of housing, as well as the availability of reliable transportation options, which are essential for a resilient workforce and economy. Caswell County's performance on this dimension is average when compared to other North Carolina counties, ranking 59th in the state.

Notable variables for Caswell County within this dimension include:

VARIABLE STRENGTH	FACTOR	CASWELL COUNTY VALUE	NC COUNTY AVERAGE VALUE
Strongest	Percentage of Households with More Residents than Rooms	1.13%	2.1%
2nd Strongest	Percentage of Owner-Occupied Homes	61.24%	57.87%
Bottom 10 in NC, Weakest	Percentage of People Driving Alone to Work	90.81%	86.36%

Healthcare: 24.55

The healthcare component examines the availability and quality of healthcare facilities, services, and professionals, which are critical for maintaining a healthy and productive workforce. Caswell County's performance on this dimension is average when compared to other North Carolina counties, ranking 59th in the state.

Notable variables for Caswell County within this dimension include:

VARIABLE STRENGTH	FACTOR	CASWELL COUNTY VALUE	NC COUNTY AVERAGE VALUE
Top 10 in NC, Strongest	Opioid Deaths per 100,000 Residents	17.7	38.73
2nd Strongest	Nursing Home Beds per 1,000 Residents of Age 65+	30.32	27.53

Bottom 10 in NC	Mental Health Professionals per 10,000 Residents	2.24	6.6
Bottom 10 in NC, Weakest	Nurses per 10,000 Residents	45.55	262.64

Community Cohesion: 63.72

This component looks at the strength of social networks, community engagement, and the ability of residents to work together to address challenges and support one another during times of adversity. Caswell County's performance on this dimension is average when compared to other North Carolina counties, ranking 35th in the state.

Notable variables for Caswell County within this dimension include:

VARIABLE STRENGTH	FACTOR	CASWELL COUNTY VALUE	NC COUNTY AVERAGE VALUE
Top 10 in NC, Strongest	Property Crimes per 10,000 Residents	2.03	15.74
Top 10 in NC, 2nd Strongest	Violent Crimes per 10,000 Residents	0.45	3.07
Bottom 10 in NC, Weakest	Yearly Population Change Percentage	-0.991%	0.906%

Socioeconomics: 43.36

This component considers factors such as income levels, poverty rates, and inequality, which can impact a community's ability to withstand and recover from economic shocks. Caswell County's performance on this dimension is average when compared to other North Carolina counties, ranking 56th in the state.

Notable variables for Caswell County within this dimension include:

VARIABLE STRENGTH	FACTOR	CASWELL COUNTY VALUE	NC COUNTY AVERAGE VALUE
Strongest	Gini Coefficient (Income Inequality)	0.42	0.46
2nd Strongest	Percentage of Population without Health Insurance	9.88%	11.23%
Weakest	Population 25+ with at least a Bachelor's Degree	15.43%	24.4%

Education: 31.37

This component evaluates the quality of educational institutions and the educational attainment levels of the local population, which play a crucial role in developing a skilled and adaptable workforce. Caswell County's performance on this dimension is fairly weak when compared to other North Carolina counties, ranking 77th in the state.

Notable variables for Caswell County within this dimension include:

VARIABLE STRENGTH	FACTOR	CASWELL COUNTY VALUE	NC COUNTY AVERAGE VALUE
Strongest	Dropout Rate	0.86%	1.65%
2nd Strongest	Student to Teacher Ratio	14	14
Bottom 10 in NC, Weakest	Teacher Attrition Rate	0.18	0.12

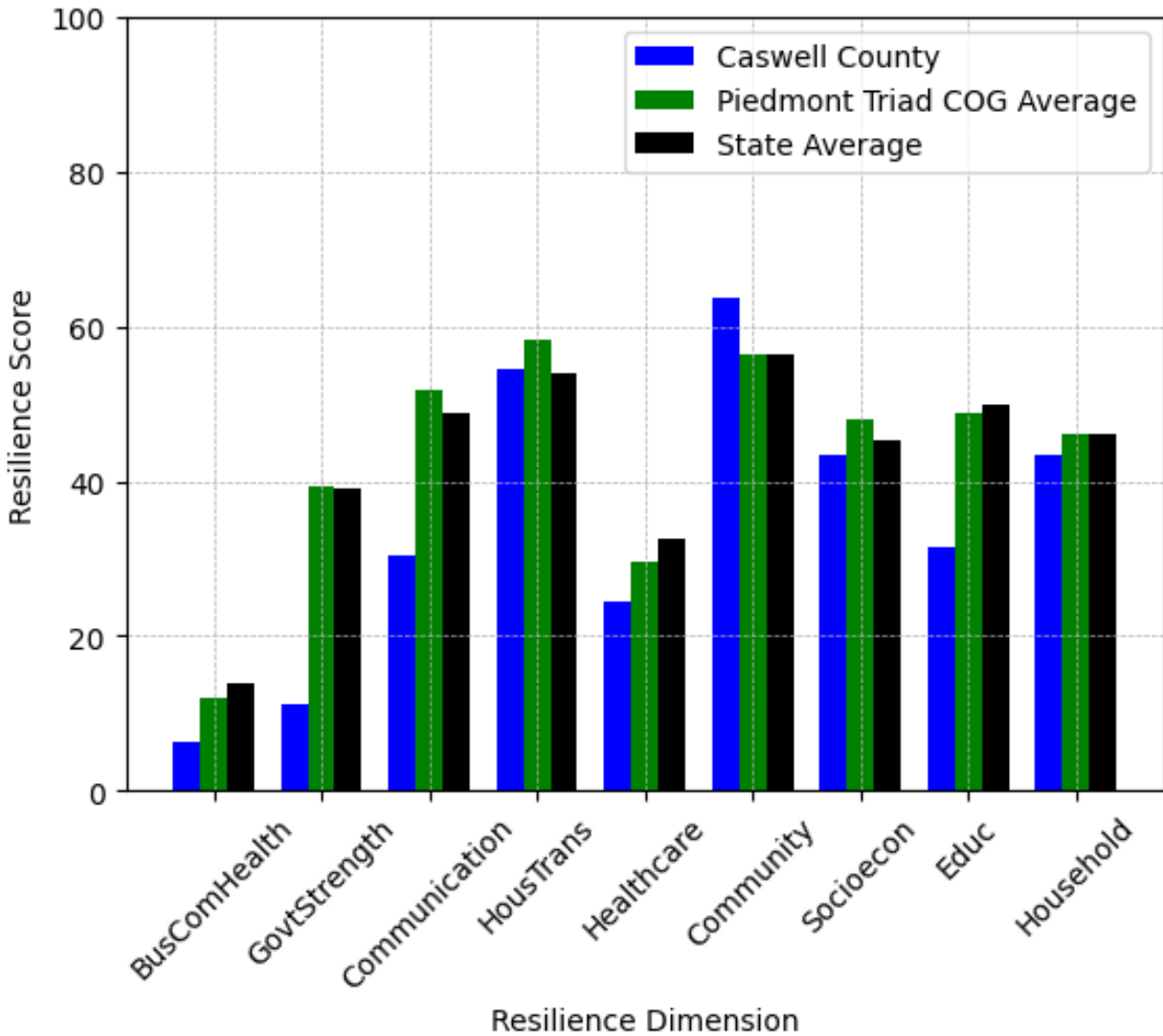
Household Characteristics: 43.36

This component examines factors such as the proportion of single-parent households, age distribution, and the proportion of individuals with disabilities, as these elements can influence a community's resilience and ability to recover from economic disruptions. Caswell County's performance on this dimension is average when compared to other North Carolina counties, ranking 57th in the state.

Notable variables for Caswell County within this dimension include:

VARIABLE STRENGTH	FACTOR	CASWELL COUNTY VALUE	NC COUNTY AVERAGE VALUE
Strongest	Percentage of Population 17 and Younger	18.09%	20.37%
2nd Strongest	Percentage of Population with Limited English Proficiency	1.165%	1.454%
Weakest	Percentage of Population with a Disability	19.864%	16.566%

Caswell County's Resilience Dimension Scores Over Time As Compared to the Region and State Averages



Note: Resilience Scores are normalized from 1 to 100 with the most resilient county scoring 100. The Resilience Score is determined based on a county's performance relative to NC's other 99 counties.

Notable Trends in Resilience Indicators, 2017-2022

NOTE: The key trends in the this section are identified based on change rates of at least .15 standard deviations over at least 5 years. Variables are positively oriented such that a positive trend indicates improved performance (e.g., 'improvement' in property crime is a lower crime rate, while 'decline' in property crime indicates a higher crime rate).

Trends in the Business Community Health dimension:

Total Employment Level: **-227** (5-year change rate = **-7.43%**, from 3,053 to 2,826)

→ No change in rank

Average Weekly Wages: **202 dollars** (5-year change rate = **29.53%**, from 684 to 886)

↑ Change in rank from 77 to 65 in NC

Real GDP in Current Dollars: **-49,525 dollars** (5-year change rate = **-13.01%**, from 380,720 to 331,195)

↓ Change in rank from 87 to 88 in NC

Trends in the County Government Fiscal Strength dimension:

Adjusted Tax Base: **9,200 dollars** (5-year change rate = **13.19%**, from 69,724 to 78,924)

↓ Change in rank from 79 to 89 in NC

County Sales Tax: **1,551,093 dollars** (5-year change rate = **55.8%**, from 2,779,560 to 4,330,653)

↑ Change in rank from 85 to 84 in NC

Trends in the Housing & Transportation dimension:

Ratio of Average Estimated Home Value to Median Income : **4.86** (5-year change rate = **42.54%**, from 11.43 to 16.29)

↓ Change in rank from 74 to 78 in NC

Average Available Rent Money less the Average HUD Fair Market Rent: **354.5 dollars** (5-year change rate = **69.92%**, from 507 to 861.5)

↑ Change in rank from 53 to 42 in NC

Trends in the Healthcare dimension:

Opioid Deaths per 100,000 Residents: **-13.2** (5-year change rate = **-42.72%**, from 30.9 to 17.7)

↑ Change in rank from 71 to 6 in NC

Nurses per 10,000 Residents: **1.43** (5-year change rate = **3.24%**, from 44.12 to 45.55)

↑ Change in rank from 96 to 95 in NC

Physicians per 10,000 Residents: **3.21** (5-year change rate = **122.99%**, from 2.61 to 5.82)

↑ Change in rank from 92 to 84 in NC

Mental Health Professionals per 10,000 Residents: **0.49** (5-year change rate = **28%**, from 1.75 to 2.24)

↑ Change in rank from 97 to 93 in NC

Trends in the Community Cohesion dimension:

Violent Crimes per 10,000 Residents: **-0.54** (4-year change rate = **-54.7%**, from 1 to 0.45)

↑ Change in rank from 14 to 6 in NC

Property Crimes per 10,000 Residents: **-5.72** (4-year change rate = **-73.81%**, from 7.75 to 2.03)

↑ Change in rank from 11 to 5 in NC

Nonprofits Organizations per 1,000 Residents: **-0.23** (5-year change rate = **-10.56%**, from 2.2 to 1.97)

↓ Change in rank from 72 to 78 in NC

Trends in the Socioeconomics dimension:

Unemployment Rate (Q4): **-0.6 percent** (5-year change rate = **-12.78%**, from 4.4 to 3.9)

↓ Change in rank from 59 to 63 in NC

Median Household Income: **16,100 dollars** (5-year change rate = **32.07%**, from 50,200 to 66,300)

↑ Change in rank from 59 to 56 in NC

Trends in the Education dimension:

Graduation Percentage: **8.1 percent** (5-year change rate = **10.28%**, from 78.8 to 86.9)

↑ Change in rank from 96 to 67 in NC

Dropout Rate: **-0.42 percent** (5-year change rate = **-32.77%**, from 1.28 to 0.86)

↓ Change in rank from 14 to 21 in NC

3rd Grade Reading Proficiency: **-23.6 percent** (5-year change rate = **-40.62%**, from 58.1 to 34.5)

↓ Change in rank from 33 to 81 in NC

Data Advisements:

- Operations Ratio of County Government is not available for 2022 and was excluded from calculating this county's dimension and resilience score.
- Dependency Ratio of County Government is not available for 2022 and was excluded from calculating this county's dimension and resilience score.
- Debt Service Ratio of County Government is not available for 2022 and was excluded from calculating this county's dimension and resilience score.
- Solvency Ratio of County Government is not available for 2022 and was excluded from calculating this county's dimension and resilience score.
- Quick Ratio of County Government is not available for 2022 and was excluded from calculating this county's dimension and resilience score.
- Capital Assets Condition Ratio of County Government is not available for 2022 and was excluded from calculating this county's dimension and resilience score.
- Availability of Broadband Services is not available for 2022 and was excluded from calculating this county's dimension and resilience score.
- Adoption Rate of Broadband Services is not available for 2022 and was excluded from calculating this county's dimension and resilience score.