

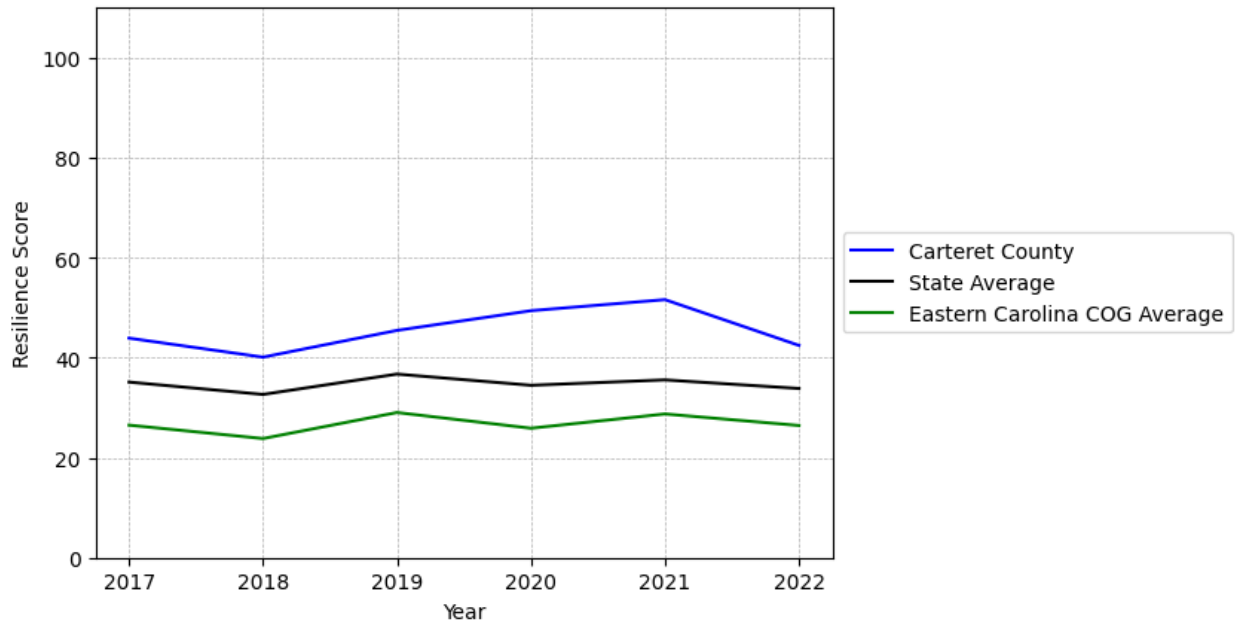
# Carteret County Summary

---

**Resilience Score: 42.45**

In 2022, Carteret County achieved a Resilience Score of 42.45, which is average as compared to the North Carolina State average.

**Carteret County's Resilience Score Over Time  
As Compared to the Region and State Averages**



*Note: Resilience Scores are normalized from 1 to 100 with the most resilient county scoring 100. The Resilience Score is determined based on a county's performance relative to NC's other 99 counties.*

Carteret County's Resilience Score is comprised of 9 distinct dimensions of resilience. Below are Carteret County's scores for 2022 on those 9 dimensions, and their rank relative to other North Carolina counties.

### **Business Community Health: 6.11**

This component examines the strength and diversity of the local business community, including factors such as the number of businesses, employment levels, and industry diversity. Carteret County's performance on this dimension is fairly weak when compared to other North Carolina counties, ranking 84th in the state.

Notable variables for Carteret County within this dimension include:

<b>VARIABLE STRENGTH</b>	<b>FACTOR</b>	<b>CARTERET COUNTY VALUE</b>	<b>NC COUNTY AVERAGE VALUE</b>
<b>Strongest</b>	Real GDP in Current Dollars	\$2,554,588	\$6,092,555
<b>2nd Strongest</b>	Science, Engineering, & Technology Industries Employment Percentage	1.27%	1.79%
<b>Weakest</b>	Private Sector Diversity	0.162	0.28

---

### **County Government Fiscal Strength: 44.06**

This component looks at the financial health of local governments, including their ability to generate revenue, manage debt, and maintain adequate reserves to weather economic downturns. Carteret County's performance on this dimension is average when compared to other North Carolina counties, ranking 47th in the state.

Notable variables for Carteret County within this dimension include:

<b>VARIABLE STRENGTH</b>	<b>FACTOR</b>	<b>CARTERET COUNTY VALUE</b>	<b>NC COUNTY AVERAGE VALUE</b>
<b>Top 10 in NC, Strongest</b>	Adjusted Tax Base	\$240,508	\$124,092
<b>2nd Strongest</b>	Solvency Ratio of County Government	70.15	46.7
<b>Bottom 10 in NC, Weakest</b>	Capital Assets Condition Ratio of County Government	0.24	0.51

---

### **Communication: 37.87**

This component assesses the availability and quality of communication infrastructure, such as broadband internet access, which is crucial for businesses and residents to stay connected and resilient during disruptions. Carteret County's performance on this dimension is fairly weak when compared to other North Carolina counties, ranking 75th in the state.

Notable variables for Carteret County within this dimension include:

VARIABLE STRENGTH	FACTOR	CARTERET COUNTY VALUE	NC COUNTY AVERAGE VALUE
<b>Strongest</b>	Percentage of Population without Smartphones	12.06%	17.22%
<b>2nd Strongest</b>	Broadband Availability	0.63	0.6
<b>Bottom 10 in NC</b>	In-Vehicle High-Speed Mobile Data Availability	0.11	0.37
<b>Bottom 10 in NC, Weakest</b>	Local High-Speed Mobile Data Availability	0.24	0.66

### **Housing & Transportation: 74.85**

This component evaluates the accessibility and affordability of housing, as well as the availability of reliable transportation options, which are essential for a resilient workforce and economy. Carteret County's performance on this dimension is fairly strong when compared to other North Carolina counties, ranking 25th in the state.

Notable variables for Carteret County within this dimension include:

VARIABLE STRENGTH	FACTOR	CARTERET COUNTY VALUE	NC COUNTY AVERAGE VALUE
<b>Top 10 in NC, Strongest</b>	Average Available Rent Money less the Average HUD Fair Market Rent	\$1,107.8	\$799.87
<b>Top 10 in NC, 2nd Strongest</b>	Percentage of Households with More Residents than Rooms	0.94%	2.1%
<b>Bottom 10 in NC, Weakest</b>	Percentage of Owner-Occupied Homes	43.4%	57.87%

### **Healthcare: 14.65**

The healthcare component examines the availability and quality of healthcare facilities, services, and professionals, which are critical for maintaining a healthy and productive workforce. Carteret County's performance on this dimension is fairly weak when compared to other North Carolina counties, ranking 90th in the state.

Notable variables for Carteret County within this dimension include:

VARIABLE STRENGTH	FACTOR	CARTERET COUNTY VALUE	NC COUNTY AVERAGE VALUE
<b>Strongest</b>	Nurses per 10,000	239.52	262.64

	Residents		
<b>2nd Strongest</b>	Physicians per 10,000 Residents	16.42	16.05
<b>Bottom 10 in NC, Weakest</b>	Nursing Home Beds per 1,000 Residents of Age 65+	13.87	27.53

### Community Cohesion: 71.33

This component looks at the strength of social networks, community engagement, and the ability of residents to work together to address challenges and support one another during times of adversity. Carteret County's performance on this dimension is fairly strong when compared to other North Carolina counties, ranking 18th in the state.

Notable variables for Carteret County within this dimension include:

VARIABLE STRENGTH	FACTOR	CARTERET COUNTY VALUE	NC COUNTY AVERAGE VALUE
<b>Strongest</b>	Percentage of Inactive Voters	10.05%	11.3%
<b>2nd Strongest</b>	Violent Crimes per 10,000 Residents	N/A	3.07
<b>Weakest</b>	Yearly Population Change Percentage	0.988%	0.906%

### Socioeconomics: 65.77

This component considers factors such as income levels, poverty rates, and inequality, which can impact a community's ability to withstand and recover from economic shocks. Carteret County's performance on this dimension is fairly strong when compared to other North Carolina counties, ranking 19th in the state.

Notable variables for Carteret County within this dimension include:

VARIABLE STRENGTH	FACTOR	CARTERET COUNTY VALUE	NC COUNTY AVERAGE VALUE
<b>Strongest</b>	Total Percentage of Population Below 150% Poverty Line	16.85%	25.93%
<b>2nd Strongest</b>	Percentage of Population without a High School Diploma	6.01%	9.05%
<b>Weakest</b>	Percentage of Households Spending more than 30%	24.32%	24.53%

**Education: 67.68**

This component evaluates the quality of educational institutions and the educational attainment levels of the local population, which play a crucial role in developing a skilled and adaptable workforce. Carteret County's performance on this dimension is strong when compared to other North Carolina counties, ranking 9th in the state.

Notable variables for Carteret County within this dimension include:

VARIABLE STRENGTH	FACTOR	CARTERET COUNTY VALUE	NC COUNTY AVERAGE VALUE
Top 10 in NC, Strongest	Local LEA Financial Resources (per ADM)	\$21,142	\$8,683
Top 10 in NC, 2nd Strongest	Teacher Attrition Rate	0.07	0.12
Top 10 in NC	3rd Grade Reading Proficiency	56.5%	43.1%
Weakest	Dropout Rate	2.18%	1.65%

**Household Characteristics: 56.97**

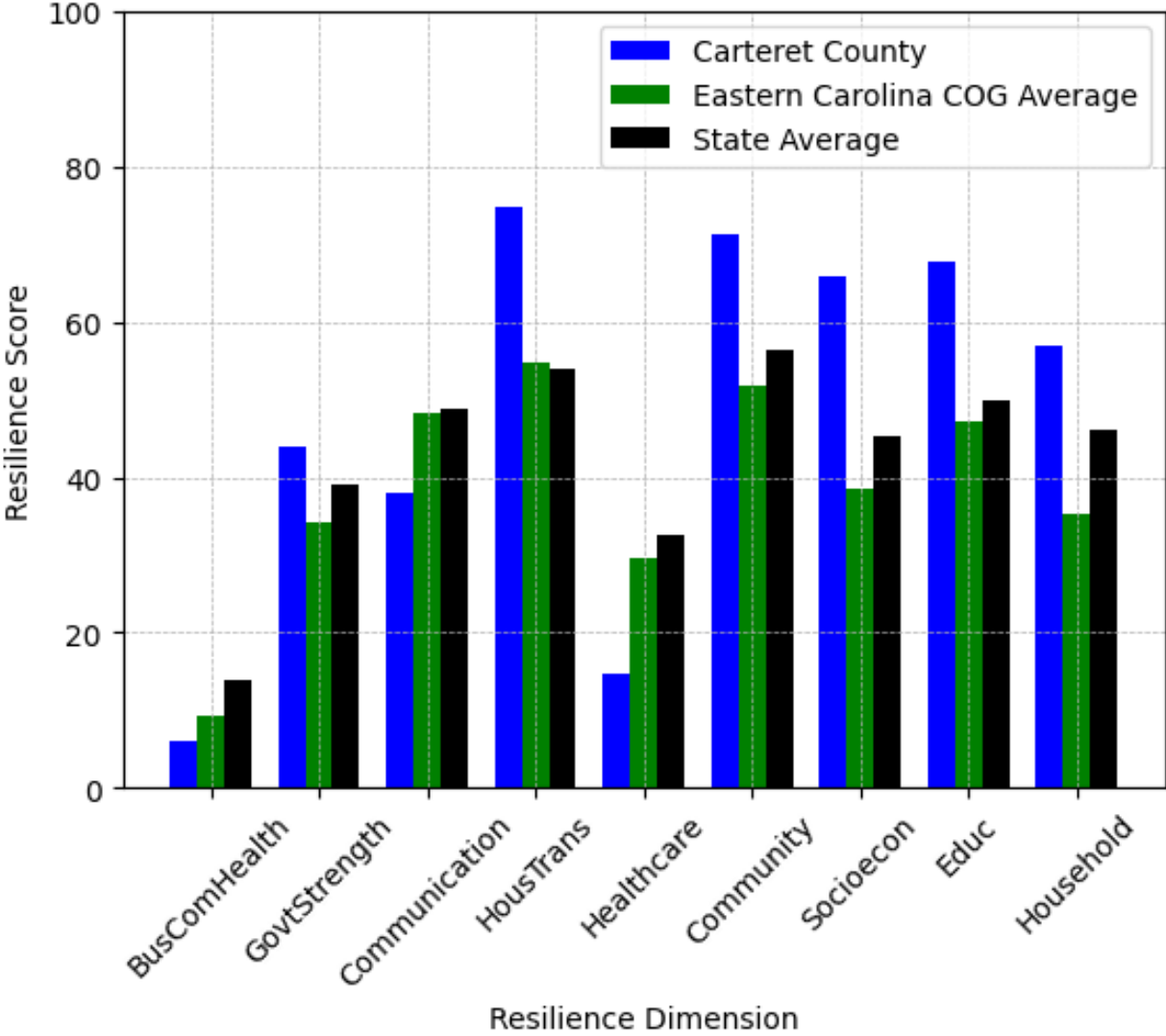
This component examines factors such as the proportion of single-parent households, age distribution, and the proportion of individuals with disabilities, as these elements can influence a community's resilience and ability to recover from economic disruptions. Carteret County's performance on this dimension is fairly strong when compared to other North Carolina counties, ranking 17th in the state.

Notable variables for Carteret County within this dimension include:

VARIABLE STRENGTH	FACTOR	CARTERET COUNTY VALUE	NC COUNTY AVERAGE VALUE
Top 10 in NC, Strongest	Percentage of Population with Limited English Proficiency	0.35%	1.454%
2nd Strongest	Percentage of Population 17 and Younger	17.1%	20.37%
Weakest	Percentage of Population 65 and Older	25.83%	20.53%



**Carteret County's Resilience Dimension Scores Over Time  
As Compared to the Region and State Averages**



*Note: Resilience Scores are normalized from 1 to 100 with the most resilient county scoring 100. The Resilience Score is determined based on a county's performance relative to NC's other 99 counties.*

## **Notable Trends in Resilience Indicators, 2017-2022**

*NOTE: The key trends in the this section are identified based on change rates of at least .15 standard deviations over at least 5 years. Variables are positively oriented such that a positive trend indicates improved performance (e.g., 'improvement' in property crime is a lower crime rate, while 'decline' in property crime indicates a higher crime rate).*

### **Trends in the Business Community Health dimension:**

Total Employment Level: **777** (5-year change rate = **3.34%**, from 23,255 to 24,032)

↓ Change in rank from 39 to 40 in NC

Average Weekly Wages: **201 dollars** (5-year change rate = **29.39%**, from 684 to 885)

↑ Change in rank from 75 to 66 in NC

Real GDP in Current Dollars: **33,114 dollars** (5-year change rate = **1.31%**, from 2,521,474 to 2,554,588)

↓ Change in rank from 38 to 39 in NC

### **Trends in the County Government Fiscal Strength dimension:**

Adjusted Tax Base: **31,031 dollars** (5-year change rate = **14.81%**, from 209,477 to 240,508)

↑ Change in rank from 6 to 5 in NC

County Sales Tax: **8,966,812 dollars** (5-year change rate = **53.15%**, from 16,870,264 to 25,837,076)

↓ Change in rank from 32 to 33 in NC

### **Trends in the Housing & Transportation dimension:**

Ratio of Average Estimated Home Value to Median Income : **2.53** (5-year change rate = **38.4%**, from 6.59 to 9.12)

→ No change in rank

Average Available Rent Money less the Average HUD Fair Market Rent: **419.1 dollars** (5-year change rate = **60.85%**, from 688.7 to 1,107.8)



↑ Change in rank from 15 to 7 in NC

**Trends in the Healthcare dimension:**

Opioid Deaths per 100,000 Residents: **22.8** (5-year change rate = **74.75%**, from 30.5 to 53.3)

↓ Change in rank from 69 to 85 in NC

Nurses per 10,000 Residents: **4.26** (5-year change rate = **1.81%**, from 235.26 to 239.52)

↑ Change in rank from 37 to 32 in NC

Physicians per 10,000 Residents: **0.65** (5-year change rate = **4.12%**, from 15.77 to 16.42)

↑ Change in rank from 39 to 37 in NC

Mental Health Professionals per 10,000 Residents: **-1.25** (5-year change rate = **-20.19%**, from 6.19 to 4.94)

↓ Change in rank from 41 to 58 in NC

**Trends in the Community Cohesion dimension:**

Nonprofits Organizations per 1,000 Residents: **0.39** (5-year change rate = **8.95%**, from 4.39 to 4.78)

↑ Change in rank from 15 to 14 in NC

**Trends in the Socioeconomics dimension:**

Unemployment Rate (Q4): **-0.8 percent** (5-year change rate = **-19.05%**, from 4.2 to 3.4)

↑ Change in rank from 45 to 33 in NC

Median Household Income: **20,300 dollars** (5-year change rate = **31.18%**, from 65,100 to 85,400)

→ No change in rank

**Trends in the Education dimension:**

Graduation Percentage: **-2.7 percent** (5-year change rate = **-3.03%**, from 89.1 to 86.4)

↓ Change in rank from 35 to 72 in NC

Dropout Rate: **-0.35 percent** (5-year change rate = **-13.88%**, from 2.54 to 2.18)

↓ Change in rank from 64 to 74 in NC

Student to Teacher Ratio: **-1** (4-year change rate = **-4.65%**, from 14 to 13)

↑ Change in rank from 24 to 23 in NC

3rd Grade Reading Proficiency: **-9.5 percent** (5-year change rate = **-14.39%**, from 66 to 56.5)

↓ Change in rank from 5 to 9 in NC

**Data Advisements:**

- Availability of Broadband Services is not available for 2022 and was excluded from calculating this county's dimension and resilience score.
- Adoption Rate of Broadband Services is not available for 2022 and was excluded from calculating this county's dimension and resilience score.
- Violent Crimes per 10,000 Residents is not available for 2022 and was excluded from calculating this county's dimension and resilience score.
- Property Crimes per 10,000 Residents is not available for 2022 and was excluded from calculating this county's dimension and resilience score.