

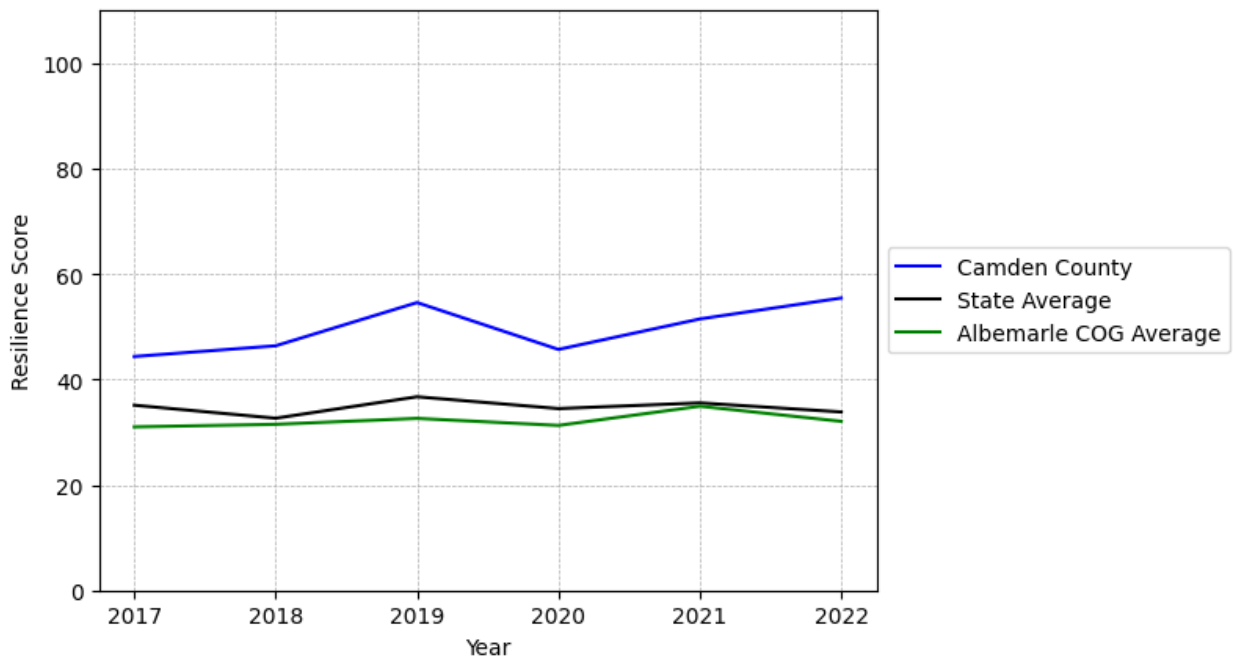
# Camden County Summary

---

**Resilience Score: 55.44**

In 2022, Camden County achieved a Resilience Score of 55.44, which is strong as compared to the North Carolina State average.

**Camden County's Resilience Score Over Time  
As Compared to the Region and State Averages**



*Note: Resilience Scores are normalized from 1 to 100 with the most resilient county scoring 100. The Resilience Score is determined based on a county's performance relative to NC's other 99 counties.*

Camden County's Resilience Score is comprised of 9 distinct dimensions of resilience. Below are Camden County's scores for 2022 on those 9 dimensions, and their rank relative to other North Carolina counties.

### **Business Community Health: 18.95**

This component examines the strength and diversity of the local business community, including factors such as the number of businesses, employment levels, and industry diversity. Camden County's performance on this dimension is average when compared to other North Carolina counties, ranking 18th in the state.

Notable variables for Camden County within this dimension include:

<b>VARIABLE STRENGTH</b>	<b>FACTOR</b>	<b>CAMDEN COUNTY VALUE</b>	<b>NC COUNTY AVERAGE VALUE</b>
<b>Top 10 in NC, Strongest</b>	Private Sector Diversity	0.641	0.28
<b>2nd Strongest</b>	Percentage of Companies in Science, Engineering, & Technology Industries	7.48%	6.13%
<b>Bottom 10 in NC</b>	Total Employment Level	1,236	45,758
<b>Bottom 10 in NC, Weakest</b>	Real GDP in Current Dollars	\$171,978	\$6,092,555

---

### **County Government Fiscal Strength: 97.36**

This component looks at the financial health of local governments, including their ability to generate revenue, manage debt, and maintain adequate reserves to weather economic downturns. Camden County's performance on this dimension is strong when compared to other North Carolina counties, ranking 2nd in the state.

Notable variables for Camden County within this dimension include:

<b>VARIABLE STRENGTH</b>	<b>FACTOR</b>	<b>CAMDEN COUNTY VALUE</b>	<b>NC COUNTY AVERAGE VALUE</b>
<b>Top 10 in NC, Strongest</b>	Quick Ratio of County Government	79.72	16.4
<b>Top 10 in NC, 2nd Strongest</b>	Solvency Ratio of County Government	88.61	46.7
<b>Top 10 in NC</b>	Operations Ratio of County Government	1.26	1.11
<b>Top 10 in NC</b>	Dependency Ratio of County Government	0.1	0.16
<b>Bottom 10 in NC, Weakest</b>	County Sales Tax	\$2,560,154	\$31,151,902

---

### Communication: 45.67

This component assesses the availability and quality of communication infrastructure, such as broadband internet access, which is crucial for businesses and residents to stay connected and resilient during disruptions. Camden County's performance on this dimension is average when compared to other North Carolina counties, ranking 62nd in the state.

Notable variables for Camden County within this dimension include:

VARIABLE STRENGTH	FACTOR	CAMDEN COUNTY VALUE	NC COUNTY AVERAGE VALUE
Strongest	Percentage of Population without Smartphones	11.24%	17.22%
2nd Strongest	Broadband Availability	0.58	0.6
Weakest	Local High-Speed Mobile Data Availability	0.44	0.66

---

### Housing & Transportation: 72.84

This component evaluates the accessibility and affordability of housing, as well as the availability of reliable transportation options, which are essential for a resilient workforce and economy. Camden County's performance on this dimension is fairly strong when compared to other North Carolina counties, ranking 28th in the state.

Notable variables for Camden County within this dimension include:

VARIABLE STRENGTH	FACTOR	CAMDEN COUNTY VALUE	NC COUNTY AVERAGE VALUE
Top 10 in NC, Strongest	Percentage of Population without Vehicles	1.29%	5.75%
Top 10 in NC, 2nd Strongest	Percentage of Owner-Occupied Homes	78.03%	57.87%
Top 10 in NC	Percentage of Homes Built Before 1980	24.89%	40.9%
Bottom 10 in NC, Weakest	Ratio of Average Estimated Home Value to Median Income	67.42	13.67

---

### Healthcare: 1

The healthcare component examines the availability and quality of healthcare facilities, services, and professionals, which are critical for maintaining a healthy and productive workforce. Camden County's performance on this dimension is weak when compared to other North Carolina counties, ranking 100th in the state.

Notable variables for Camden County within this dimension include:

VARIABLE STRENGTH	FACTOR	CAMDEN COUNTY VALUE	NC COUNTY AVERAGE VALUE
<b>Strongest</b>	Opioid Deaths per 100,000 Residents	36.8	38.73
<b>Bottom 10 in NC, 2nd Strongest</b>	Physicians per 10,000 Residents	3.66	16.05
<b>Bottom 10 in NC</b>	Nursing Home Beds per 1,000 Residents of Age 65+	0	27.53
<b>Bottom 10 in NC</b>	Mental Health Professionals per 10,000 Residents	0.92	6.6
<b>Bottom 10 in NC, Weakest</b>	Nurses per 10,000 Residents	35.32	262.64

### Community Cohesion: 79.03

This component looks at the strength of social networks, community engagement, and the ability of residents to work together to address challenges and support one another during times of adversity. Camden County's performance on this dimension is strong when compared to other North Carolina counties, ranking 8th in the state.

Notable variables for Camden County within this dimension include:

VARIABLE STRENGTH	FACTOR	CAMDEN COUNTY VALUE	NC COUNTY AVERAGE VALUE
<b>Top 10 in NC, Strongest</b>	Violent Crimes per 10,000 Residents	0	3.07
<b>Top 10 in NC, 2nd Strongest</b>	Property Crimes per 10,000 Residents	0	15.74
<b>Top 10 in NC</b>	Yearly Population Change Percentage	2.619%	0.906%
<b>Weakest</b>	Percentage of Inactive Voters	13.37%	11.3%

### Socioeconomics: 82.13

This component considers factors such as income levels, poverty rates, and inequality, which can impact a community's ability to withstand and recover from economic shocks. Camden County's performance on this dimension is strong when compared to other North Carolina counties, ranking 6th in the state.

Notable variables for Camden County within this dimension include:

VARIABLE STRENGTH	FACTOR	CAMDEN COUNTY VALUE	NC COUNTY AVERAGE VALUE
Top 10 in NC, Strongest	Percentage of Population without Health Insurance	3.67%	11.23%
Top 10 in NC, 2nd Strongest	Gini Coefficient (Income Inequality)	0.35	0.46
Top 10 in NC	Total Percentage of Population Below 150% Poverty Line	12.97%	25.93%
Weakest	Percentage of Households with Income over \$200k	3.67%	5.28%

### Education: 75.43

This component evaluates the quality of educational institutions and the educational attainment levels of the local population, which play a crucial role in developing a skilled and adaptable workforce. Camden County's performance on this dimension is strong when compared to other North Carolina counties, ranking 4th in the state.

Notable variables for Camden County within this dimension include:

VARIABLE STRENGTH	FACTOR	CAMDEN COUNTY VALUE	NC COUNTY AVERAGE VALUE
Top 10 in NC, Strongest	3rd Grade Reading Proficiency	78.4%	43.1%
Top 10 in NC, 2nd Strongest	Teacher Attrition Rate	0.06	0.12
Top 10 in NC	Dropout Rate	0.34%	1.65%
Weakest	Local LEA Financial Resources (per ADM)	\$5,579	\$8,683

### Household Characteristics: 61.32

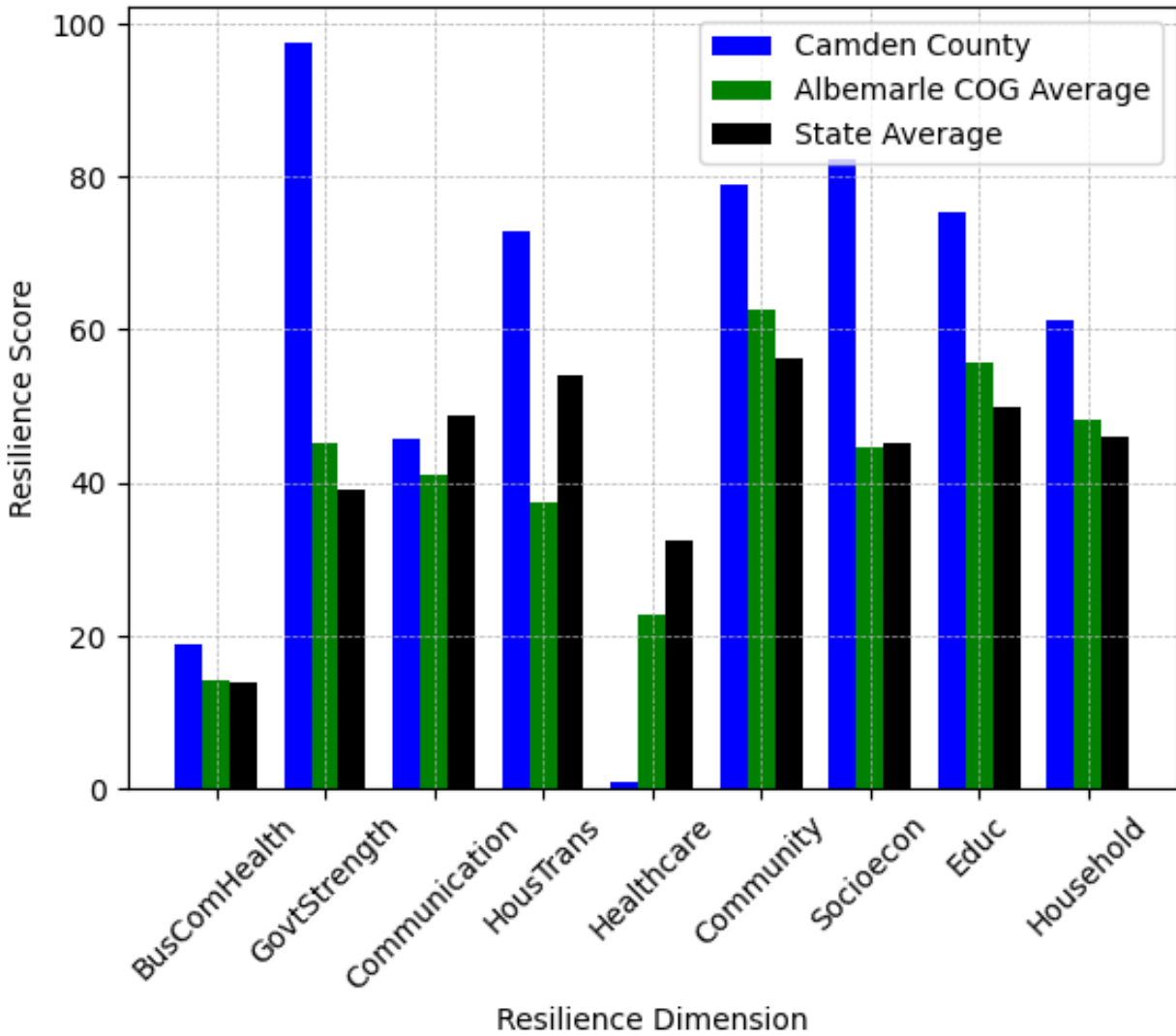
This component examines factors such as the proportion of single-parent households, age distribution, and the proportion of individuals with disabilities, as these elements can influence a community's resilience and ability to recover from economic disruptions. Camden County's performance on this dimension is strong when compared to other North Carolina counties, ranking 12th in the state.

Notable variables for Camden County within this dimension include:

<b>VARIABLE STRENGTH</b>	<b>FACTOR</b>	<b>CAMDEN COUNTY VALUE</b>	<b>NC COUNTY AVERAGE VALUE</b>
<b>Top 10 in NC, Strongest</b>	Percentage of Single Parent Households	21.612%	36.132%
<b>2nd Strongest</b>	Percentage of Population 65 and Older	15.76%	20.53%
<b>Bottom 10 in NC, Weakest</b>	Percentage of Population 17 and Younger	23.8%	20.37%

---

## Camden County's Resilience Dimension Scores Over Time As Compared to the Region and State Averages



*Note: Resilience Scores are normalized from 1 to 100 with the most resilient county scoring 100. The Resilience Score is determined based on a county's performance relative to NC's other 99 counties.*

## **Notable Trends in Resilience Indicators, 2017-2022**

*NOTE: The key trends in the this section are identified based on change rates of at least .15 standard deviations over at least 5 years. Variables are positively oriented such that a positive trend indicates improved performance (e.g., 'improvement' in property crime is a lower crime rate, while 'decline' in property crime indicates a higher crime rate).*

### **Trends in the Business Community Health dimension:**

Total Employment Level: **-91** (5-year change rate = **-6.83%**, from 1,327 to 1,236)

→ No change in rank

Average Weekly Wages: **249 dollars** (5-year change rate = **33.79%**, from 737 to 986)

↑ Change in rank from 38 to 30 in NC

Real GDP in Current Dollars: **10,564 dollars** (5-year change rate = **6.54%**, from 161,414 to 171,978)

→ No change in rank

### **Trends in the County Government Fiscal Strength dimension:**

Adjusted Tax Base: **16,819 dollars** (5-year change rate = **16.82%**, from 99,984 to 116,803)

↓ Change in rank from 43 to 45 in NC

County Sales Tax: **1,043,104 dollars** (5-year change rate = **68.76%**, from 1,517,049 to 2,560,154)

↑ Change in rank from 97 to 96 in NC

### **Trends in the Housing & Transportation dimension:**

Ratio of Average Estimated Home Value to Median Income : **8.81** (5-year change rate = **15.03%**, from 58.61 to 67.42)

→ No change in rank

Average Available Rent Money less the Average HUD Fair Market Rent: **331.4 dollars** (5-year change rate = **48.86%**, from 678.3 to 1,009.7)



↓ Change in rank from 17 to 25 in NC

**Trends in the Healthcare dimension:**

Opioid Deaths per 100,000 Residents: **8.4** (5-year change rate = **29.58%**, from 28.4 to 36.8)

↑ Change in rank from 62 to 51 in NC

Nurses per 10,000 Residents: **0.33** (5-year change rate = **0.94%**, from 34.99 to 35.32)

↓ Change in rank from 99 to 100 in NC

Physicians per 10,000 Residents: **3.66** (5-year change rate = **N/A**, from 0 to 3.66)

↑ Change in rank from 98 to 91 in NC

Mental Health Professionals per 10,000 Residents: **0.92** (5-year change rate = **N/A**, from 0 to 0.92)

→ No change in rank

**Trends in the Community Cohesion dimension:**

Violent Crimes per 10,000 Residents: **-0.3** (4-year change rate = **-100%**, from 0.3 to 0)

↑ Change in rank from 6 to 1 in NC

Property Crimes per 10,000 Residents: **-6.42** (4-year change rate = **-100%**, from 6.42 to 0)

↑ Change in rank from 9 to 1 in NC

Nonprofits Organizations per 1,000 Residents: **-0.43** (5-year change rate = **-10.48%**, from 4.09 to 3.66)

↓ Change in rank from 19 to 35 in NC

**Trends in the Socioeconomics dimension:**

Unemployment Rate (Q4): **-0.3 percent** (5-year change rate = **-7.56%**, from 4 to 3.7)

↓ Change in rank from 28 to 55 in NC

Median Household Income: **11,000 dollars** (5-year change rate = **15.01%**, from 73,300 to 84,300)

↓ Change in rank from 7 to 18 in NC

**Trends in the Education dimension:**

Graduation Percentage: **1.4 percent** (5-year change rate = **1.55%**, from 90.2 to 91.6)

↑ Change in rank from 30 to 21 in NC

Dropout Rate: **-1.44 percent** (5-year change rate = **-81.08%**, from 1.78 to 0.34)

↑ Change in rank from 33 to 8 in NC

3rd Grade Reading Proficiency: **-1.1 percent** (5-year change rate = **-1.38%**, from 79.5 to 78.4)

→ No change in rank

Postsecondary Enrollment Percentage: **-0.18 percent** (5-year change rate = **-40.03%**, from 0.44 to 0.26)

↓ Change in rank from 7 to 34 in NC

**Data Advisements:**

- This county has a population under 20,000 residents according to the US Census Bureau; in low population areas, some variable estimates can be less stable and more sensitive to changes.
- Availability of Broadband Services is not available for 2022 and was excluded from calculating this county's dimension and resilience score.
- Adoption Rate of Broadband Services is not available for 2022 and was excluded from calculating this county's dimension and resilience score.