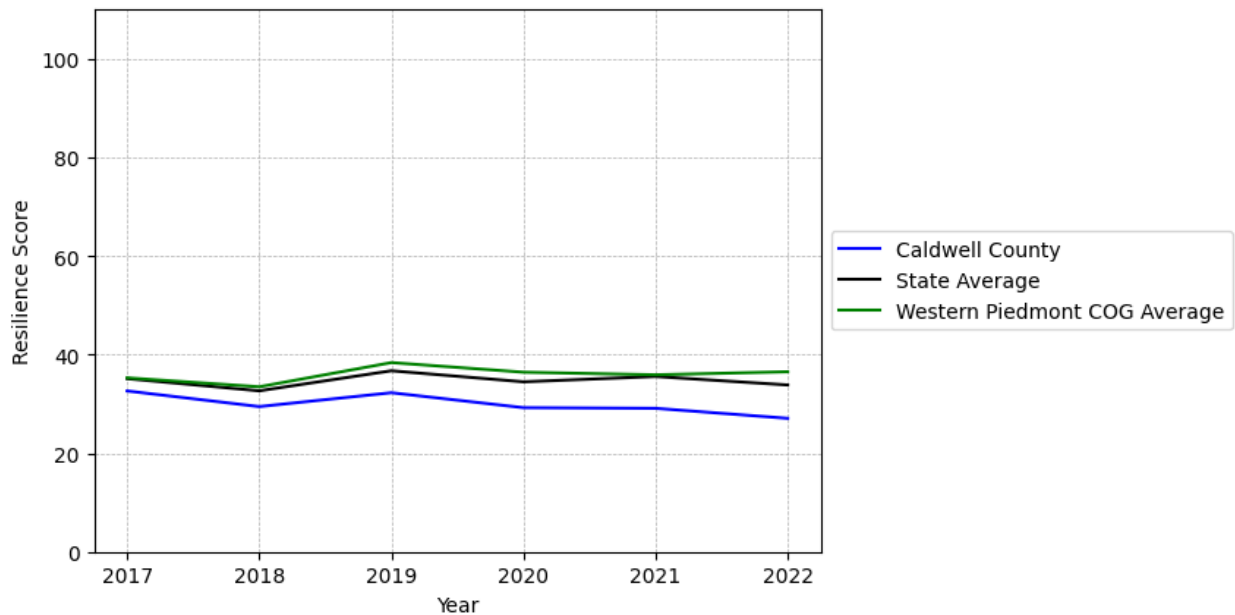


Caldwell County Summary

Resilience Score: 27.07

In 2022, Caldwell County achieved a Resilience Score of 27.07, which is average as compared to the North Carolina State average.

**Caldwell County's Resilience Score Over Time
As Compared to the Region and State Averages**



Note: Resilience Scores are normalized from 1 to 100 with the most resilient county scoring 100. The Resilience Score is determined based on a county's performance relative to NC's other 99 counties.

Caldwell County's Resilience Score is comprised of 9 distinct dimensions of resilience. Below are Caldwell County's scores for 2022 on those 9 dimensions, and their rank relative to other North Carolina counties.

Business Community Health: 11.95

This component examines the strength and diversity of the local business community, including factors such as the number of businesses, employment levels, and industry diversity. Caldwell County's performance on this dimension is average when compared to other North Carolina counties, ranking 47th in the state.

Notable variables for Caldwell County within this dimension include:

VARIABLE STRENGTH	FACTOR	CALDWELL COUNTY VALUE	NC COUNTY AVERAGE VALUE
Strongest	Ratio of Available Child Care Slots to Number of Children under Five	0.75	0.59
2nd Strongest	Average Weekly Wages	\$966	\$951
Weakest	Percentage of Companies in Science, Engineering, & Technology Industries	4.02%	6.13%

County Government Fiscal Strength: 5.34

This component looks at the financial health of local governments, including their ability to generate revenue, manage debt, and maintain adequate reserves to weather economic downturns. Caldwell County's performance on this dimension is weak when compared to other North Carolina counties, ranking 97th in the state.

Notable variables for Caldwell County within this dimension include:

VARIABLE STRENGTH	FACTOR	CALDWELL COUNTY VALUE	NC COUNTY AVERAGE VALUE
Strongest	Debt Service Ratio of County Government	0.04	0.07
2nd Strongest	Quick Ratio of County Government	15.27	16.4
Bottom 10 in NC	Solvency Ratio of County Government	20.63	46.7
Bottom 10 in NC, Weakest	Dependency Ratio of County Government	0.32	0.16

Communication: 45.18

This component assesses the availability and quality of communication infrastructure, such as broadband internet access, which is crucial for businesses and residents to stay connected and

resilient during disruptions. Caldwell County's performance on this dimension is average when compared to other North Carolina counties, ranking 63rd in the state.

Notable variables for Caldwell County within this dimension include:

VARIABLE STRENGTH	FACTOR	CALDWELL COUNTY VALUE	NC COUNTY AVERAGE VALUE
Strongest	Broadband Availability	0.65	0.6
2nd Strongest	In-Vehicle High-Speed Mobile Data Availability	0.29	0.37
Weakest	Percentage of Population without Smartphones	20.61%	17.22%

Housing & Transportation: 70.22

This component evaluates the accessibility and affordability of housing, as well as the availability of reliable transportation options, which are essential for a resilient workforce and economy. Caldwell County's performance on this dimension is fairly strong when compared to other North Carolina counties, ranking 33rd in the state.

Notable variables for Caldwell County within this dimension include:

VARIABLE STRENGTH	FACTOR	CALDWELL COUNTY VALUE	NC COUNTY AVERAGE VALUE
Strongest	Percentage of Owner-Occupied Homes	64.5%	57.87%
2nd Strongest	Percentage of People with Commute Times Over 45 Minutes	12.35%	16.69%
Weakest	Percentage of Homes Built Before 1980	49.64%	40.9%

Healthcare: 21.28

The healthcare component examines the availability and quality of healthcare facilities, services, and professionals, which are critical for maintaining a healthy and productive workforce. Caldwell County's performance on this dimension is average when compared to other North Carolina counties, ranking 68th in the state.

Notable variables for Caldwell County within this dimension include:

VARIABLE STRENGTH	FACTOR	CALDWELL COUNTY VALUE	NC COUNTY AVERAGE VALUE
-------------------	--------	-----------------------	-------------------------

Strongest	Nurses per 10,000 Residents	179.65	262.64
2nd Strongest	Physicians per 10,000 Residents	11.24	16.05
Weakest	Mental Health Professionals per 10,000 Residents	4.56	6.6

Community Cohesion: 51.41

This component looks at the strength of social networks, community engagement, and the ability of residents to work together to address challenges and support one another during times of adversity. Caldwell County's performance on this dimension is average when compared to other North Carolina counties, ranking 68th in the state.

Notable variables for Caldwell County within this dimension include:

VARIABLE STRENGTH	FACTOR	CALDWELL COUNTY VALUE	NC COUNTY AVERAGE VALUE
Strongest	Percentage of Inactive Voters	9.04%	11.3%
2nd Strongest	Violent Crimes per 10,000 Residents	1.36	3.07
Bottom 10 in NC, Weakest	Nonprofits Organizations per 1,000 Residents	1.06	3.17

Socioeconomics: 43.87

This component considers factors such as income levels, poverty rates, and inequality, which can impact a community's ability to withstand and recover from economic shocks. Caldwell County's performance on this dimension is average when compared to other North Carolina counties, ranking 54th in the state.

Notable variables for Caldwell County within this dimension include:

VARIABLE STRENGTH	FACTOR	CALDWELL COUNTY VALUE	NC COUNTY AVERAGE VALUE
Top 10 in NC, Strongest	Percentage of Households Spending more than 30% Income on Housing	18.54%	24.53%
2nd Strongest	Gini Coefficient (Income Inequality)	0.44	0.46
Weakest	Percentage of Population without a High School	13.09%	9.05%

Education: 40.09

This component evaluates the quality of educational institutions and the educational attainment levels of the local population, which play a crucial role in developing a skilled and adaptable workforce. Caldwell County's performance on this dimension is average when compared to other North Carolina counties, ranking 64th in the state.

Notable variables for Caldwell County within this dimension include:

VARIABLE STRENGTH	FACTOR	CALDWELL COUNTY VALUE	NC COUNTY AVERAGE VALUE
Strongest	Teacher Attrition Rate	0.08	0.12
2nd Strongest	Student to Teacher Ratio	14	14
Weakest	Postsecondary Enrollment Percentage	17.23%	25.48%

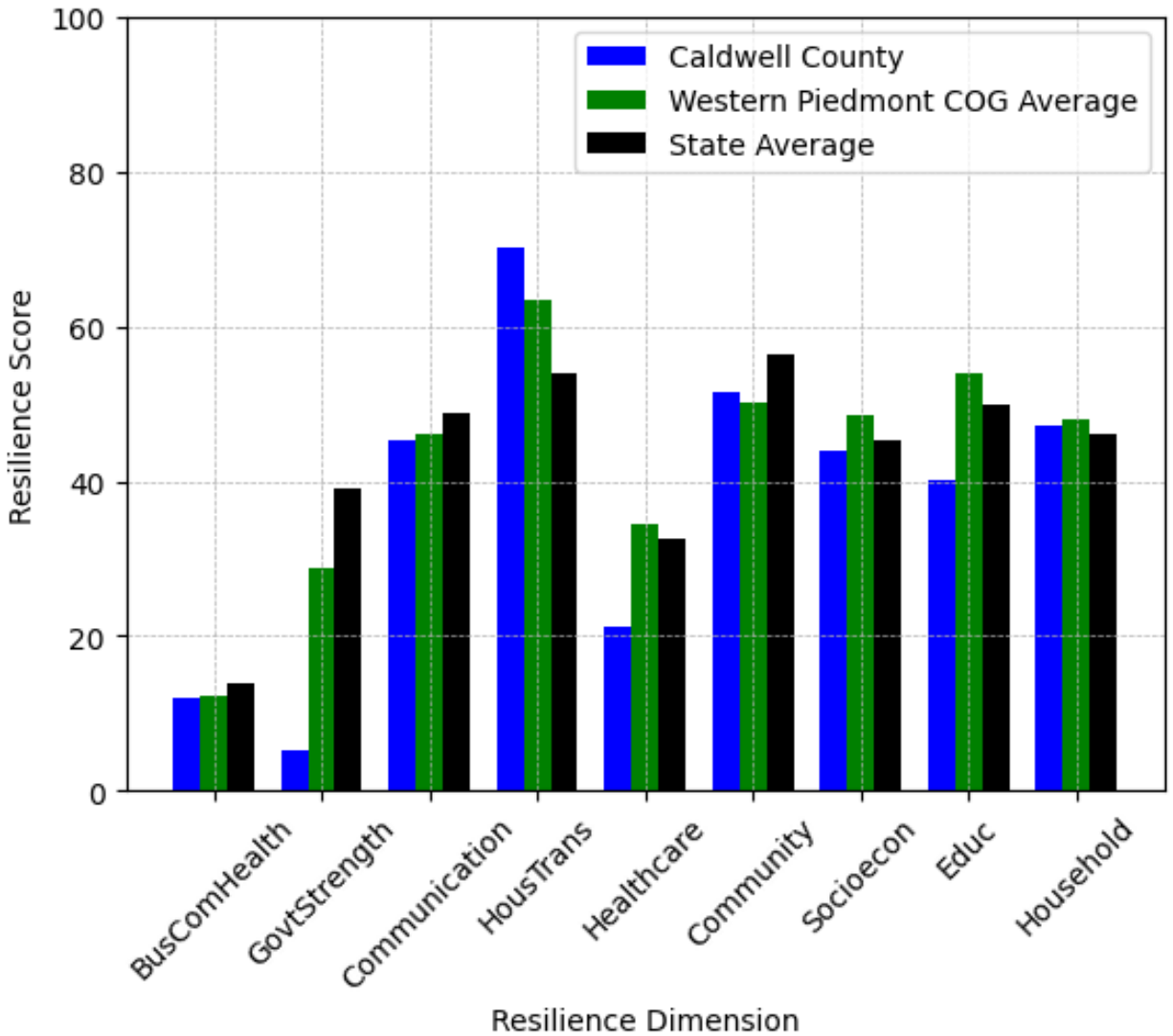
Household Characteristics: 47.06

This component examines factors such as the proportion of single-parent households, age distribution, and the proportion of individuals with disabilities, as these elements can influence a community's resilience and ability to recover from economic disruptions. Caldwell County's performance on this dimension is average when compared to other North Carolina counties, ranking 42nd in the state.

Notable variables for Caldwell County within this dimension include:

VARIABLE STRENGTH	FACTOR	CALDWELL COUNTY VALUE	NC COUNTY AVERAGE VALUE
Strongest	Percentage of Population with Limited English Proficiency	0.618%	1.454%
2nd Strongest	Percentage of Population 17 and Younger	19.85%	20.37%
Weakest	Percentage of Population with a Disability	18.821%	16.566%

Caldwell County's Resilience Dimension Scores Over Time As Compared to the Region and State Averages



Note: Resilience Scores are normalized from 1 to 100 with the most resilient county scoring 100. The Resilience Score is determined based on a county's performance relative to NC's other 99 counties.

Notable Trends in Resilience Indicators, 2017-2022

NOTE: The key trends in the this section are identified based on change rates of at least .15 standard deviations over at least 5 years. Variables are positively oriented such that a positive trend indicates improved performance (e.g., 'improvement' in property crime is a lower crime rate, while 'decline' in property crime indicates a higher crime rate).

Trends in the Business Community Health dimension:

Total Employment Level: **675** (5-year change rate = **2.7%**, from 24,945 to 25,620)

→ No change in rank

Average Weekly Wages: **230 dollars** (5-year change rate = **31.25%**, from 736 to 966)

↑ Change in rank from 39 to 34 in NC

Real GDP in Current Dollars: **-98,397 dollars** (5-year change rate = **-3.96%**, from 2,486,546 to 2,388,149)

↓ Change in rank from 39 to 42 in NC

Trends in the County Government Fiscal Strength dimension:

Adjusted Tax Base: **23,234 dollars** (5-year change rate = **29.95%**, from 77,580 to 100,814)

↑ Change in rank from 64 to 53 in NC

County Sales Tax: **5,597,357 dollars** (5-year change rate = **48.54%**, from 11,530,589 to 17,127,946)

↓ Change in rank from 45 to 48 in NC

Trends in the Housing & Transportation dimension:

Ratio of Average Estimated Home Value to Median Income : **1.43** (5-year change rate = **40.97%**, from 3.5 to 4.93)

↓ Change in rank from 28 to 33 in NC

Average Available Rent Money less the Average HUD Fair Market Rent: **393.8 dollars** (5-year change rate = **70.37%**, from 559.6 to 953.4)

↑ Change in rank from 41 to 34 in NC

Trends in the Healthcare dimension:

Opioid Deaths per 100,000 Residents: **18.2** (5-year change rate = **82.73%**, from 22 to 40.2)

↓ Change in rank from 47 to 61 in NC

Nurses per 10,000 Residents: **29** (5-year change rate = **19.25%**, from 150.65 to 179.65)

↑ Change in rank from 58 to 48 in NC

Physicians per 10,000 Residents: **1.48** (5-year change rate = **15.16%**, from 9.76 to 11.24)

↑ Change in rank from 58 to 54 in NC

Mental Health Professionals per 10,000 Residents: **0.97** (5-year change rate = **27.02%**, from 3.59 to 4.56)

↑ Change in rank from 79 to 64 in NC

Trends in the Community Cohesion dimension:

Violent Crimes per 10,000 Residents: **-0.49** (4-year change rate = **-26.35%**, from 1.85 to 1.36)

↑ Change in rank from 41 to 21 in NC

Property Crimes per 10,000 Residents: **-10.48** (4-year change rate = **-32.39%**, from 32.34 to 21.87)

↑ Change in rank from 88 to 81 in NC

Trends in the Socioeconomics dimension:

Unemployment Rate (Q4): **-0.8 percent** (5-year change rate = **-19.38%**, from 4.3 to 3.5)

↑ Change in rank from 50 to 42 in NC

Median Household Income: **17,600 dollars** (5-year change rate = **33.85%**, from 52,000 to 69,600)

↑ Change in rank from 51 to 47 in NC

Trends in the Education dimension:

Graduation Percentage: **-3.6 percent** (5-year change rate = **-3.96%**, from 91 to 87.4)

↓ Change in rank from 25 to 63 in NC

Dropout Rate: **0.45 percent** (5-year change rate = **24.96%**, from 1.82 to 2.27)

↓ Change in rank from 34 to 76 in NC

3rd Grade Reading Proficiency: **-17.5 percent** (5-year change rate = **-29.22%**, from 59.9 to 42.4)

↓ Change in rank from 23 to 56 in NC

Data Advisements:

- Availability of Broadband Services is not available for 2022 and was excluded from calculating this county's dimension and resilience score.
- Adoption Rate of Broadband Services is not available for 2022 and was excluded from calculating this county's dimension and resilience score.