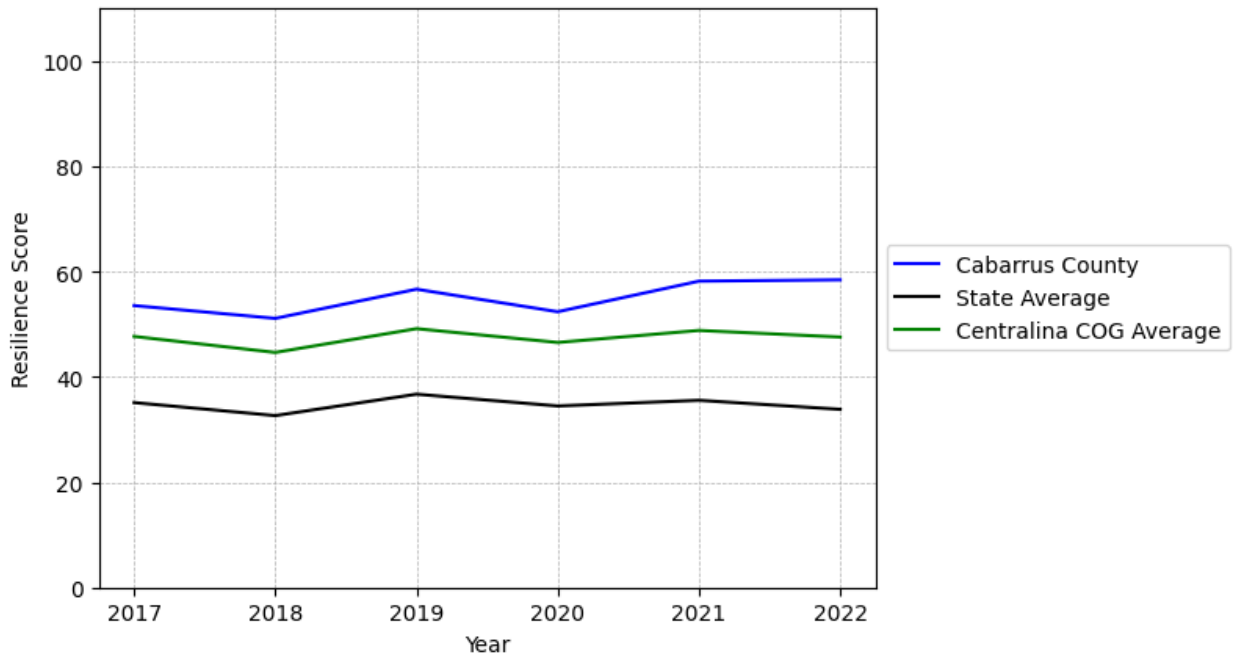


Cabarrus County Summary

Resilience Score: 58.43

In 2022, Cabarrus County achieved a Resilience Score of 58.43, which is strong as compared to the North Carolina State average.

**Cabarrus County's Resilience Score Over Time
As Compared to the Region and State Averages**



Note: Resilience Scores are normalized from 1 to 100 with the most resilient county scoring 100. The Resilience Score is determined based on a county's performance relative to NC's other 99 counties.

Cabarrus County's Resilience Score is comprised of 9 distinct dimensions of resilience. Below are Cabarrus County's scores for 2022 on those 9 dimensions, and their rank relative to other North Carolina counties.

Business Community Health: 18.24

This component examines the strength and diversity of the local business community, including factors such as the number of businesses, employment levels, and industry diversity. Cabarrus County's performance on this dimension is average when compared to other North Carolina counties, ranking 20th in the state.

Notable variables for Cabarrus County within this dimension include:

VARIABLE STRENGTH	FACTOR	CABARRUS COUNTY VALUE	NC COUNTY AVERAGE VALUE
Top 10 in NC, Strongest	Percentage of Companies in Science, Engineering, & Technology Industries	9.98%	6.13%
Top 10 in NC, 2nd Strongest	Total Employment Level	84,398	45,758
Bottom 10 in NC, Weakest	Private Sector Diversity	0.089	0.28

County Government Fiscal Strength: 61.57

This component looks at the financial health of local governments, including their ability to generate revenue, manage debt, and maintain adequate reserves to weather economic downturns. Cabarrus County's performance on this dimension is fairly strong when compared to other North Carolina counties, ranking 16th in the state.

Notable variables for Cabarrus County within this dimension include:

VARIABLE STRENGTH	FACTOR	CABARRUS COUNTY VALUE	NC COUNTY AVERAGE VALUE
Top 10 in NC, Strongest	Operations Ratio of County Government	1.28	1.11
Top 10 in NC, 2nd Strongest	Dependency Ratio of County Government	0.09	0.16
Top 10 in NC	County Sales Tax	\$77,093,04	\$31,151,902
Bottom 10 in NC, Weakest	Debt Service Ratio of County Government	0.17	0.07

Communication: 86.06

This component assesses the availability and quality of communication infrastructure, such as broadband internet access, which is crucial for businesses and residents to stay connected and resilient during disruptions. Cabarrus County's performance on this dimension is strong when compared to other North Carolina counties, ranking 6th in the state.

Notable variables for Cabarrus County within this dimension include:

VARIABLE STRENGTH	FACTOR	CABARRUS COUNTY VALUE	NC COUNTY AVERAGE VALUE
Top 10 in NC, Strongest	Local High-Speed Mobile Data Availability	0.97	0.66
Top 10 in NC, 2nd Strongest	In-Vehicle High-Speed Mobile Data Availability	0.7	0.37
Top 10 in NC	Percentage of Population without Smartphones	10.09%	17.22%
Weakest	Broadband Availability	0.8	0.6

Housing & Transportation: 77.1

This component evaluates the accessibility and affordability of housing, as well as the availability of reliable transportation options, which are essential for a resilient workforce and economy.

Cabarrus County's performance on this dimension is fairly strong when compared to other North Carolina counties, ranking 20th in the state.

Notable variables for Cabarrus County within this dimension include:

VARIABLE STRENGTH	FACTOR	CABARRUS COUNTY VALUE	NC COUNTY AVERAGE VALUE
Top 10 in NC, Strongest	Average Available Rent Money less the Average HUD Fair Market Rent	\$1,086.7	\$799.87
2nd Strongest	Percentage of Population without Vehicles	3.73%	5.75%
Weakest	Percentage of Households with More Residents than Rooms	3%	2.1%

Healthcare: 33.52

The healthcare component examines the availability and quality of healthcare facilities, services, and professionals, which are critical for maintaining a healthy and productive workforce. Cabarrus County's performance on this dimension is average when compared to other North Carolina counties, ranking 26th in the state.

Notable variables for Cabarrus County within this dimension include:

VARIABLE STRENGTH	FACTOR	CABARRUS COUNTY VALUE	NC COUNTY AVERAGE VALUE
Strongest	Nurses per 10,000	366.38	262.64

	Residents		
2nd Strongest	Physicians per 10,000 Residents	22.24	16.05
Weakest	Nursing Home Beds per 1,000 Residents of Age 65+	20.51	27.53

Community Cohesion: 66.18

This component looks at the strength of social networks, community engagement, and the ability of residents to work together to address challenges and support one another during times of adversity. Cabarrus County's performance on this dimension is fairly strong when compared to other North Carolina counties, ranking 29th in the state.

Notable variables for Cabarrus County within this dimension include:

VARIABLE STRENGTH	FACTOR	CABARRUS COUNTY VALUE	NC COUNTY AVERAGE VALUE
Strongest	Yearly Population Change Percentage	2.459%	0.906%
2nd Strongest	Violent Crimes per 10,000 Residents	1.17	3.07
Weakest	Nonprofits Organizations per 1,000 Residents	2.33	3.17

Socioeconomics: 82.8

This component considers factors such as income levels, poverty rates, and inequality, which can impact a community's ability to withstand and recover from economic shocks. Cabarrus County's performance on this dimension is strong when compared to other North Carolina counties, ranking 4th in the state.

Notable variables for Cabarrus County within this dimension include:

VARIABLE STRENGTH	FACTOR	CABARRUS COUNTY VALUE	NC COUNTY AVERAGE VALUE
Top 10 in NC, Strongest	Median Household Income	\$96,3	\$70,088
Top 10 in NC, 2nd Strongest	Percentage of Population without Health Insurance	7.97%	11.23%
Top 10 in NC	Percentage of Households with Income over \$200k	12.15%	5.28%
Top 10 in NC	Total Percentage of Population Below 150%	16.45%	25.93%

Weakest	Poverty Line		
	Percentage of Households Spending more than 30% Income on Housing	22.9%	24.53%

Education: 50.82

This component evaluates the quality of educational institutions and the educational attainment levels of the local population, which play a crucial role in developing a skilled and adaptable workforce. Cabarrus County's performance on this dimension is average when compared to other North Carolina counties, ranking 43rd in the state.

Notable variables for Cabarrus County within this dimension include:

VARIABLE STRENGTH	FACTOR	CABARRUS COUNTY VALUE	NC COUNTY AVERAGE VALUE
Strongest	Teacher Attrition Rate	0.09	0.12
2nd Strongest	Postsecondary Enrollment Percentage	28.14%	25.48%
Weakest	Student to Teacher Ratio	16	14

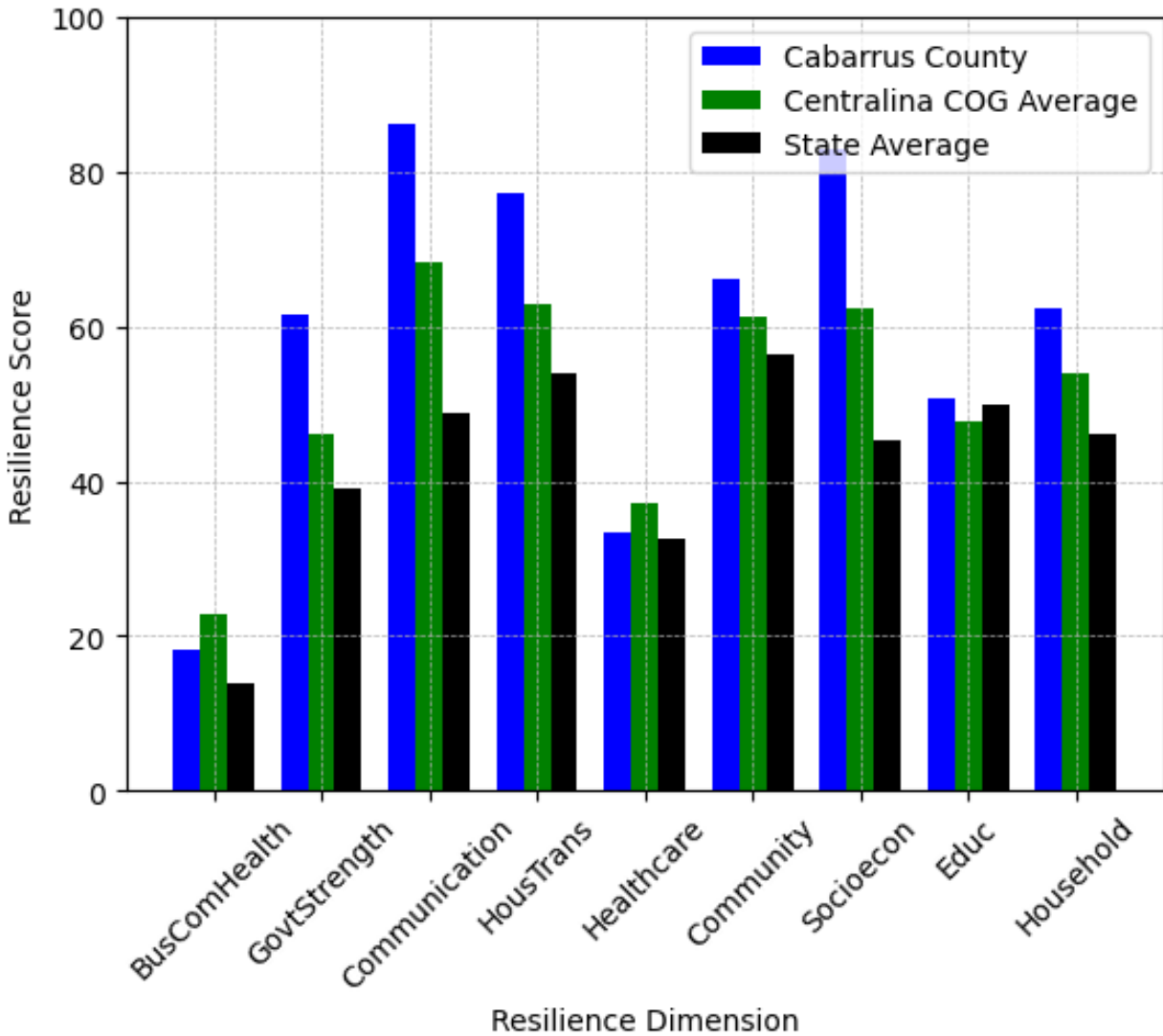
Household Characteristics: 62.4

This component examines factors such as the proportion of single-parent households, age distribution, and the proportion of individuals with disabilities, as these elements can influence a community's resilience and ability to recover from economic disruptions. Cabarrus County's performance on this dimension is strong when compared to other North Carolina counties, ranking 9th in the state.

Notable variables for Cabarrus County within this dimension include:

VARIABLE STRENGTH	FACTOR	CABARRUS COUNTY VALUE	NC COUNTY AVERAGE VALUE
Top 10 in NC, Strongest	Percentage of Population with a Disability	10.671%	16.566%
Top 10 in NC, 2nd Strongest	Percentage of Population 65 and Older	13.34%	20.53%
Bottom 10 in NC, Weakest	Percentage of Population 17 and Younger	25.21%	20.37%

Cabarrus County's Resilience Dimension Scores Over Time As Compared to the Region and State Averages



Note: Resilience Scores are normalized from 1 to 100 with the most resilient county scoring 100. The Resilience Score is determined based on a county's performance relative to NC's other 99 counties.

Notable Trends in Resilience Indicators, 2017-2022

NOTE: The key trends in the this section are identified based on change rates of at least .15 standard deviations over at least 5 years. Variables are positively oriented such that a positive trend indicates improved performance (e.g., 'improvement' in property crime is a lower crime rate, while 'decline' in property crime indicates a higher crime rate).

Trends in the Business Community Health dimension:

Total Employment Level: **6,072** (5-year change rate = **7.75%**, from 78,326 to 84,398)

→ No change in rank

Average Weekly Wages: **172 dollars** (5-year change rate = **21.1%**, from 815 to 987)

↓ Change in rank from 19 to 29 in NC

Real GDP in Current Dollars: **802,247 dollars** (5-year change rate = **10.2%**, from 7,865,181 to 8,667,428)

→ No change in rank

Trends in the County Government Fiscal Strength dimension:

Adjusted Tax Base: **15,924 dollars** (5-year change rate = **15.66%**, from 101,676 to 117,600)

↓ Change in rank from 42 to 44 in NC

County Sales Tax: **26,211,068 dollars** (5-year change rate = **51.51%**, from 50,881,972 to 77,093,040)

→ No change in rank

Trends in the Housing & Transportation dimension:

Ratio of Average Estimated Home Value to Median Income : **1.11** (5-year change rate = **43.42%**, from 2.55 to 3.66)

↓ Change in rank from 20 to 21 in NC

Average Available Rent Money less the Average HUD Fair Market Rent: **356 dollars** (5-year change rate = **48.72%**, from 730.7 to 1,086.7)

↑ Change in rank from 11 to 10 in NC

Trends in the Healthcare dimension:

Opioid Deaths per 100,000 Residents: **-8.1** (5-year change rate = **-22.31%**, from 36.3 to 28.2)

↑ Change in rank from 86 to 27 in NC

Nurses per 10,000 Residents: **-11.71** (5-year change rate = **-3.1%**, from 378.09 to 366.38)

↑ Change in rank from 17 to 15 in NC

Physicians per 10,000 Residents: **0.38** (5-year change rate = **1.74%**, from 21.86 to 22.24)

→ No change in rank

Mental Health Professionals per 10,000 Residents: **0.58** (5-year change rate = **7.3%**, from 7.95 to 8.53)

↓ Change in rank from 19 to 24 in NC

Trends in the Community Cohesion dimension:

Property Crimes per 10,000 Residents: **-3.48** (4-year change rate = **-22.96%**, from 15.14 to 11.66)

↑ Change in rank from 35 to 27 in NC

Nonprofits Organizations per 1,000 Residents: **-0.77** (5-year change rate = **-24.89%**, from 3.1 to 2.33)

↓ Change in rank from 37 to 65 in NC

Trends in the Socioeconomics dimension:

Unemployment Rate (Q4): **-0.5 percent** (5-year change rate = **-13.79%**, from 3.9 to 3.3)

↓ Change in rank from 18 to 26 in NC

Median Household Income: **25,600 dollars** (5-year change rate = **36.21%**, from 70,700 to 96,300)

↑ Change in rank from 11 to 6 in NC

Trends in the Education dimension:

Graduation Percentage: **3.05 percent** (5-year change rate = **3.49%**, from 87.3 to 90.35)

↑ Change in rank from 45 to 30 in NC

Dropout Rate: **-0.81 percent** (5-year change rate = **-33.92%**, from 2.4 to 1.59)

↑ Change in rank from 57 to 48 in NC

Student to Teacher Ratio: **-1** (4-year change rate = **-5.58%**, from 17 to 16)

↑ Change in rank from 89 to 85 in NC

3rd Grade Reading Proficiency: **-3.39 percent** (5-year change rate = **-6.32%**, from 53.63 to 50.24)

↑ Change in rank from 52 to 28 in NC

Data Advisements:

- Availability of Broadband Services is not available for 2022 and was excluded from calculating this county's dimension and resilience score.
- Adoption Rate of Broadband Services is not available for 2022 and was excluded from calculating this county's dimension and resilience score.