

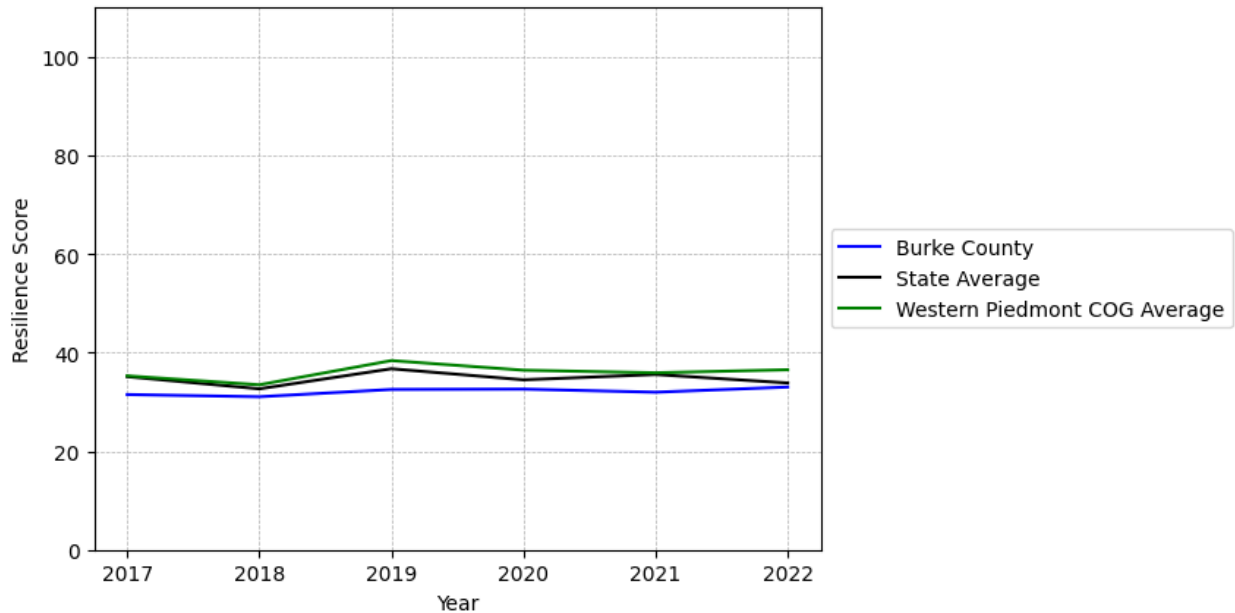
# Burke County Summary

---

**Resilience Score: 33.01**

In 2022, Burke County achieved a Resilience Score of 33.01, which is average as compared to the North Carolina State average.

**Burke County's Resilience Score Over Time  
As Compared to the Region and State Averages**



*Note: Resilience Scores are normalized from 1 to 100 with the most resilient county scoring 100. The Resilience Score is determined based on a county's performance relative to NC's other 99 counties.*

Burke County's Resilience Score is comprised of 9 distinct dimensions of resilience. Below are Burke County's scores for 2022 on those 9 dimensions, and their rank relative to other North Carolina counties.

### **Business Community Health: 6.97**

This component examines the strength and diversity of the local business community, including factors such as the number of businesses, employment levels, and industry diversity. Burke County's performance on this dimension is fairly weak when compared to other North Carolina counties, ranking 78th in the state.

Notable variables for Burke County within this dimension include:

<b>VARIABLE STRENGTH</b>	<b>FACTOR</b>	<b>BURKE COUNTY VALUE</b>	<b>NC COUNTY AVERAGE VALUE</b>
<b>Strongest</b>	Total Employment Level	29,769	45,758
<b>2nd Strongest</b>	Real GDP in Current Dollars	\$2,615,833	\$6,092,555
<b>Weakest</b>	Science, Engineering, & Technology Industries Employment Percentage	0.5%	1.79%

---

### **County Government Fiscal Strength: 21.72**

This component looks at the financial health of local governments, including their ability to generate revenue, manage debt, and maintain adequate reserves to weather economic downturns. Burke County's performance on this dimension is fairly weak when compared to other North Carolina counties, ranking 86th in the state.

Notable variables for Burke County within this dimension include:

<b>VARIABLE STRENGTH</b>	<b>FACTOR</b>	<b>BURKE COUNTY VALUE</b>	<b>NC COUNTY AVERAGE VALUE</b>
<b>Strongest</b>	Capital Assets Condition Ratio of County Government	0.58	0.51
<b>2nd Strongest</b>	County Sales Tax	\$21,430,18	\$31,151,902
<b>Weakest</b>	Operations Ratio of County Government	1.02	1.11

---

### **Communication: 47.05**

This component assesses the availability and quality of communication infrastructure, such as broadband internet access, which is crucial for businesses and residents to stay connected and resilient during disruptions. Burke County's performance on this dimension is average when compared to other North Carolina counties, ranking 58th in the state.

Notable variables for Burke County within this dimension include:

VARIABLE STRENGTH	FACTOR	BURKE COUNTY VALUE	NC COUNTY AVERAGE VALUE
Strongest	In-Vehicle High-Speed Mobile Data Availability	0.34	0.37
2nd Strongest	Local High-Speed Mobile Data Availability	0.66	0.66
Weakest	Percentage of Population without Smartphones	19.52%	17.22%

### Housing & Transportation: 70

This component evaluates the accessibility and affordability of housing, as well as the availability of reliable transportation options, which are essential for a resilient workforce and economy. Burke County's performance on this dimension is fairly strong when compared to other North Carolina counties, ranking 34th in the state.

Notable variables for Burke County within this dimension include:

VARIABLE STRENGTH	FACTOR	BURKE COUNTY VALUE	NC COUNTY AVERAGE VALUE
Strongest	Percentage of Owner-Occupied Homes	67.35%	57.87%
2nd Strongest	Percentage of People with Commute Times Over 45 Minutes	11.18%	16.69%
Bottom 10 in NC, Weakest	Percentage of People Driving Alone to Work	89.32%	86.36%

### Healthcare: 38.61

The healthcare component examines the availability and quality of healthcare facilities, services, and professionals, which are critical for maintaining a healthy and productive workforce. Burke County's performance on this dimension is fairly strong when compared to other North Carolina counties, ranking 14th in the state.

Notable variables for Burke County within this dimension include:

VARIABLE STRENGTH	FACTOR	BURKE COUNTY VALUE	NC COUNTY AVERAGE VALUE
Top 10 in NC, Strongest	Mental Health Professionals per 10,000 Residents	13.62	6.6

<b>2nd Strongest</b>	Physicians per 10,000 Residents	22.42	16.05
<b>Weakest</b>	Opioid Deaths per 100,000 Residents	40.9	38.73

### Community Cohesion: 53.56

This component looks at the strength of social networks, community engagement, and the ability of residents to work together to address challenges and support one another during times of adversity. Burke County's performance on this dimension is average when compared to other North Carolina counties, ranking 59th in the state.

Notable variables for Burke County within this dimension include:

<b>VARIABLE STRENGTH</b>	<b>FACTOR</b>	<b>BURKE COUNTY VALUE</b>	<b>NC COUNTY AVERAGE VALUE</b>
<b>Strongest</b>	Percentage of Inactive Voters	10.48%	11.3%
<b>2nd Strongest</b>	Yearly Population Change Percentage	0.769%	0.906%
<b>Weakest</b>	Nonprofits Organizations per 1,000 Residents	1.66	3.17

### Socioeconomics: 46.51

This component considers factors such as income levels, poverty rates, and inequality, which can impact a community's ability to withstand and recover from economic shocks. Burke County's performance on this dimension is average when compared to other North Carolina counties, ranking 48th in the state.

Notable variables for Burke County within this dimension include:

<b>VARIABLE STRENGTH</b>	<b>FACTOR</b>	<b>BURKE COUNTY VALUE</b>	<b>NC COUNTY AVERAGE VALUE</b>
<b>Top 10 in NC, Strongest</b>	Percentage of Households Spending more than 30% Income on Housing	18.32%	24.53%
<b>2nd Strongest</b>	Unemployment Rate (Q4)	3.4%	3.9%
<b>Weakest</b>	Percentage of Population without a High School Diploma	11.19%	9.05%

---

**Education: 45.59**

This component evaluates the quality of educational institutions and the educational attainment levels of the local population, which play a crucial role in developing a skilled and adaptable workforce. Burke County's performance on this dimension is average when compared to other North Carolina counties, ranking 53rd in the state.

Notable variables for Burke County within this dimension include:

<b>VARIABLE STRENGTH</b>	<b>FACTOR</b>	<b>BURKE COUNTY VALUE</b>	<b>NC COUNTY AVERAGE VALUE</b>
<b>Top 10 in NC, Strongest</b>	Teacher Attrition Rate	0.07	0.12
<b>2nd Strongest</b>	Graduation Percentage	91.9%	88.03%
<b>Weakest</b>	Student to Teacher Ratio	16	14

---

**Household Characteristics: 44.93**

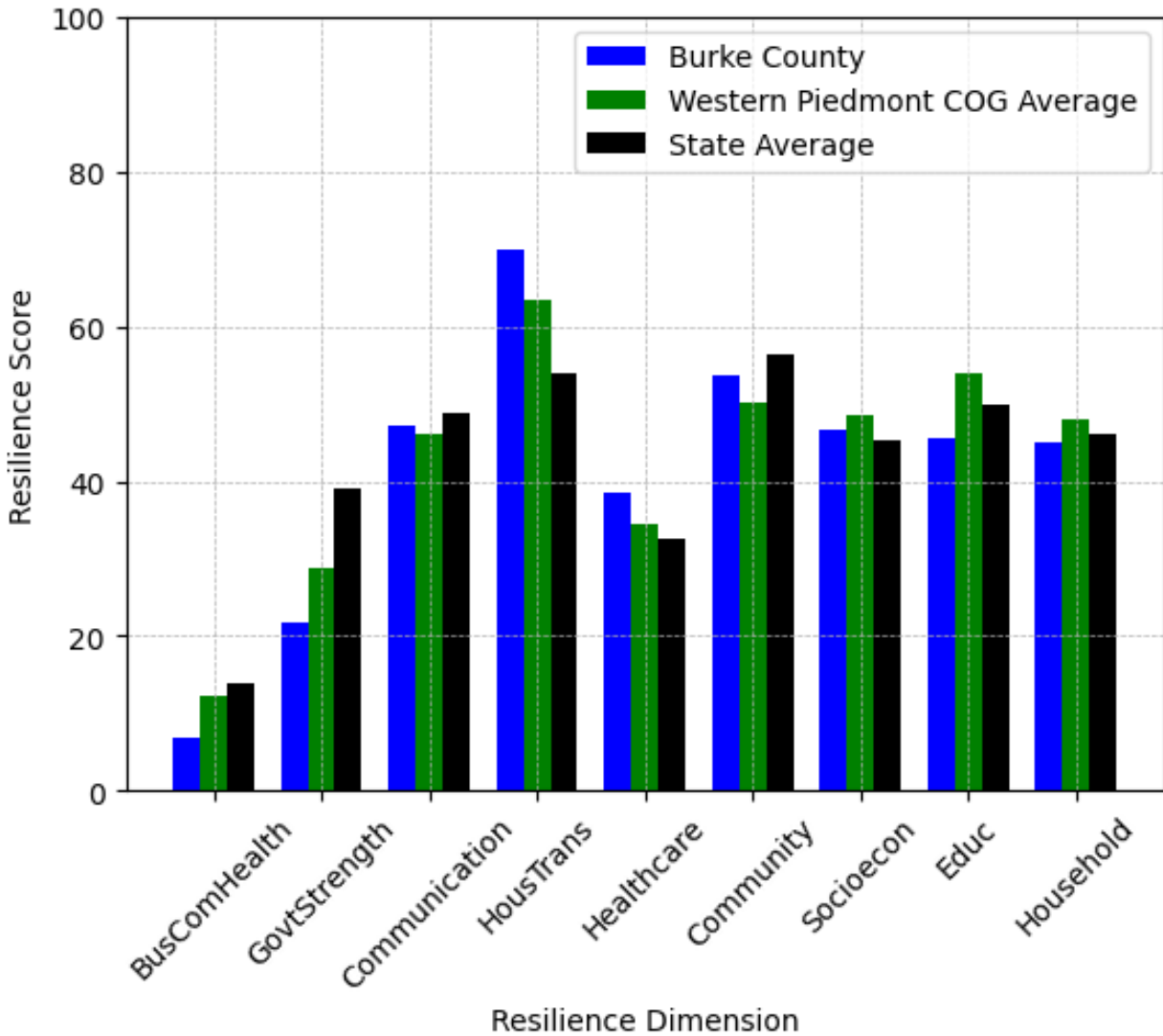
This component examines factors such as the proportion of single-parent households, age distribution, and the proportion of individuals with disabilities, as these elements can influence a community's resilience and ability to recover from economic disruptions. Burke County's performance on this dimension is average when compared to other North Carolina counties, ranking 51st in the state.

Notable variables for Burke County within this dimension include:

<b>VARIABLE STRENGTH</b>	<b>FACTOR</b>	<b>BURKE COUNTY VALUE</b>	<b>NC COUNTY AVERAGE VALUE</b>
<b>Strongest</b>	Percentage of Population 17 and Younger	18.24%	20.37%
<b>2nd Strongest</b>	Percentage of Single Parent Households	32.585%	36.132%
<b>Weakest</b>	Percentage of Population with a Disability	20.44%	16.566%

---

## Burke County's Resilience Dimension Scores Over Time As Compared to the Region and State Averages



*Note: Resilience Scores are normalized from 1 to 100 with the most resilient county scoring 100. The Resilience Score is determined based on a county's performance relative to NC's other 99 counties.*

## **Notable Trends in Resilience Indicators, 2017-2022**

*NOTE: The key trends in the this section are identified based on change rates of at least .15 standard deviations over at least 5 years. Variables are positively oriented such that a positive trend indicates improved performance (e.g., 'improvement' in property crime is a lower crime rate, while 'decline' in property crime indicates a higher crime rate).*

### **Trends in the Business Community Health dimension:**

Total Employment Level: **88** (5-year change rate = **0.3%**, from 29,680 to 29,769)

→ No change in rank

Average Weekly Wages: **169 dollars** (5-year change rate = **23.02%**, from 734 to 903)

↓ Change in rank from 40 to 56 in NC

Real GDP in Current Dollars: **-198,213 dollars** (5-year change rate = **-7.04%**, from 2,814,046 to 2,615,833)

↓ Change in rank from 35 to 37 in NC

Ratio of Available Child Care Slots to Number of Children under Five: **-0.2** (5-year change rate = **-26.23%**, from 0.77 to 0.56)

↓ Change in rank from 23 to 53 in NC

### **Trends in the County Government Fiscal Strength dimension:**

Adjusted Tax Base: **12,485 dollars** (5-year change rate = **17.41%**, from 71,728 to 84,213)

↓ Change in rank from 74 to 80 in NC

County Sales Tax: **7,387,593 dollars** (5-year change rate = **52.61%**, from 14,042,587 to 21,430,180)

↓ Change in rank from 38 to 40 in NC

### **Trends in the Housing & Transportation dimension:**

Ratio of Average Estimated Home Value to Median Income : **1.08** (5-year change rate = **32.35%**, from 3.34 to 4.42)

→ No change in rank

Average Available Rent Money less the Average HUD Fair Market Rent: **393.8 dollars** (5-year change rate = **70.37%**, from 559.6 to 953.4)

↑ Change in rank from 43 to 33 in NC

**Trends in the Healthcare dimension:**

Opioid Deaths per 100,000 Residents: **8.4** (5-year change rate = **25.85%**, from 32.5 to 40.9)

↑ Change in rank from 75 to 63 in NC

Nurses per 10,000 Residents: **8.23** (5-year change rate = **2.82%**, from 291.97 to 300.2)

↑ Change in rank from 23 to 21 in NC

Physicians per 10,000 Residents: **-2.07** (5-year change rate = **-8.45%**, from 24.49 to 22.42)

↓ Change in rank from 12 to 17 in NC

Mental Health Professionals per 10,000 Residents: **0.81** (5-year change rate = **6.32%**, from 12.81 to 13.62)

↑ Change in rank from 8 to 7 in NC

**Trends in the Community Cohesion dimension:**

Violent Crimes per 10,000 Residents: **0.82** (4-year change rate = **48.92%**, from 1.68 to 2.5)

↓ Change in rank from 34 to 48 in NC

Property Crimes per 10,000 Residents: **-3.63** (4-year change rate = **-18.66%**, from 19.45 to 15.82)

↓ Change in rank from 53 to 58 in NC

**Trends in the Socioeconomics dimension:**

Unemployment Rate (Q4): **-0.5 percent** (5-year change rate = **-13.68%**, from 3.9 to 3.4)



↓ Change in rank from 25 to 31 in NC

Median Household Income: **17,600 dollars** (5-year change rate = **33.85%**, from 52,000 to 69,600)

↑ Change in rank from 53 to 46 in NC

**Trends in the Education dimension:**

Graduation Percentage: **0.2 percent** (5-year change rate = **0.22%**, from 91.7 to 91.9)

↓ Change in rank from 16 to 20 in NC

Dropout Rate: **-0.32 percent** (5-year change rate = **-15.41%**, from 2.06 to 1.74)

↓ Change in rank from 42 to 57 in NC

3rd Grade Reading Proficiency: **-12.6 percent** (5-year change rate = **-22.83%**, from 55.2 to 42.6)

↓ Change in rank from 45 to 55 in NC

**Data Advisements:**

- Availability of Broadband Services is not available for 2022 and was excluded from calculating this county's dimension and resilience score.
- Adoption Rate of Broadband Services is not available for 2022 and was excluded from calculating this county's dimension and resilience score.