

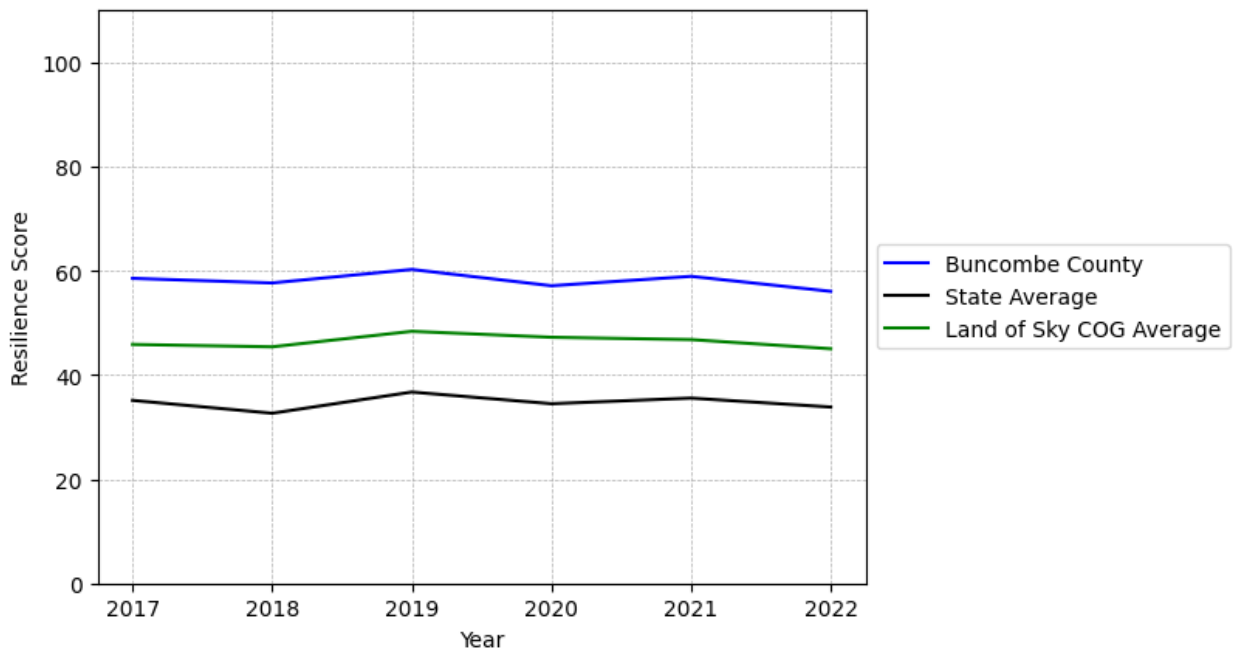
# Buncombe County Summary

---

**Resilience Score: 56.04**

In 2022, Buncombe County achieved a Resilience Score of 56.04, which is strong as compared to the North Carolina State average.

**Buncombe County's Resilience Score Over Time  
As Compared to the Region and State Averages**



*Note: Resilience Scores are normalized from 1 to 100 with the most resilient county scoring 100. The Resilience Score is determined based on a county's performance relative to NC's other 99 counties.*

Buncombe County's Resilience Score is comprised of 9 distinct dimensions of resilience. Below are Buncombe County's scores for 2022 on those 9 dimensions, and their rank relative to other North Carolina counties.

### **Business Community Health: 25.1**

This component examines the strength and diversity of the local business community, including factors such as the number of businesses, employment levels, and industry diversity. Buncombe County's performance on this dimension is fairly strong when compared to other North Carolina counties, ranking 9th in the state.

Notable variables for Buncombe County within this dimension include:

<b>VARIABLE STRENGTH</b>	<b>FACTOR</b>	<b>BUNCOMBE COUNTY VALUE</b>	<b>NC COUNTY AVERAGE VALUE</b>
<b>Top 10 in NC, Strongest</b>	Total Employment Level	138,084	45,758
<b>Top 10 in NC, 2nd Strongest</b>	Real GDP in Current Dollars	\$15,336,616	\$6,092,555
<b>Top 10 in NC</b>	Percentage of Companies in Science, Engineering, & Technology Industries	11.01%	6.13%
<b>Top 10 in NC</b>	Science, Engineering, & Technology Industries Employment Percentage	3.55%	1.79%
<b>Bottom 10 in NC, Weakest</b>	Private Sector Diversity	0.053	0.28

---

### **County Government Fiscal Strength: 50.46**

This component looks at the financial health of local governments, including their ability to generate revenue, manage debt, and maintain adequate reserves to weather economic downturns. Buncombe County's performance on this dimension is average when compared to other North Carolina counties, ranking 35th in the state.

Notable variables for Buncombe County within this dimension include:

<b>VARIABLE STRENGTH</b>	<b>FACTOR</b>	<b>BUNCOMBE COUNTY VALUE</b>	<b>NC COUNTY AVERAGE VALUE</b>
<b>Top 10 in NC, Strongest</b>	County Sales Tax	\$125,301,312	\$31,151,902
<b>2nd Strongest</b>	Adjusted Tax Base	\$159,363	\$124,092
<b>Bottom 10 in NC, Weakest</b>	Solvency Ratio of County Government	25.47	46.7

---

### **Communication: 65.65**

This component assesses the availability and quality of communication infrastructure, such as broadband internet access, which is crucial for businesses and residents to stay connected and

resilient during disruptions. Buncombe County's performance on this dimension is fairly strong when compared to other North Carolina counties, ranking 22nd in the state.

Notable variables for Buncombe County within this dimension include:

VARIABLE STRENGTH	FACTOR	BUNCOMBE COUNTY VALUE	NC COUNTY AVERAGE VALUE
<b>Strongest</b>	In-Vehicle High-Speed Mobile Data Availability	0.54	0.37
<b>2nd Strongest</b>	Broadband Availability	0.71	0.6
<b>Weakest</b>	Percentage of Population without Smartphones	15.46%	17.22%

### **Housing & Transportation: 58.62**

This component evaluates the accessibility and affordability of housing, as well as the availability of reliable transportation options, which are essential for a resilient workforce and economy.

Buncombe County's performance on this dimension is average when compared to other North Carolina counties, ranking 51st in the state.

Notable variables for Buncombe County within this dimension include:

VARIABLE STRENGTH	FACTOR	BUNCOMBE COUNTY VALUE	NC COUNTY AVERAGE VALUE
<b>Top 10 in NC, Strongest</b>	Percentage of People with Commute Times Over 45 Minutes	5.79%	16.69%
<b>2nd Strongest</b>	Ratio of Average Estimated Home Value to Median Income	3.2	13.67
<b>Bottom 10 in NC, Weakest</b>	Average Available Rent Money less the Average HUD Fair Market Rent	\$397.4	\$799.87

### **Healthcare: 57.69**

The healthcare component examines the availability and quality of healthcare facilities, services, and professionals, which are critical for maintaining a healthy and productive workforce.

Buncombe County's performance on this dimension is strong when compared to other North Carolina counties, ranking 5th in the state.

Notable variables for Buncombe County within this dimension include:

VARIABLE STRENGTH	FACTOR	BUNCOMBE COUNTY VALUE	NC COUNTY AVERAGE VALUE
Top 10 in NC, Strongest	Mental Health Professionals per 10,000 Residents	20.82	6.6
Top 10 in NC, 2nd Strongest	Physicians per 10,000 Residents	45.27	16.05
Top 10 in NC	Nurses per 10,000 Residents	761.32	262.64
Weakest	Opioid Deaths per 100,000 Residents	53.6	38.73

### Community Cohesion: 53.16

This component looks at the strength of social networks, community engagement, and the ability of residents to work together to address challenges and support one another during times of adversity. Buncombe County's performance on this dimension is average when compared to other North Carolina counties, ranking 62nd in the state.

Notable variables for Buncombe County within this dimension include:

VARIABLE STRENGTH	FACTOR	BUNCOMBE COUNTY VALUE	NC COUNTY AVERAGE VALUE
Strongest	Nonprofits Organizations per 1,000 Residents	4.52	3.17
2nd Strongest	Yearly Population Change Percentage	0.65%	0.906%
Weakest	Property Crimes per 10,000 Residents	24.46	15.74

### Socioeconomics: 63.62

This component considers factors such as income levels, poverty rates, and inequality, which can impact a community's ability to withstand and recover from economic shocks. Buncombe County's performance on this dimension is fairly strong when compared to other North Carolina counties, ranking 21st in the state.

Notable variables for Buncombe County within this dimension include:

VARIABLE STRENGTH	FACTOR	BUNCOMBE COUNTY VALUE	NC COUNTY AVERAGE VALUE
Top 10 in NC, Strongest	Unemployment Rate (Q4)	2.8%	3.9%
Top 10 in NC, 2nd Strongest	Population 25+ with at least a Bachelor's Degree	43.03%	24.4%

<b>Weakest</b>	Gini Coefficient (Income Inequality)	0.48	0.46
----------------	--------------------------------------	------	------

### Education: 64.28

This component evaluates the quality of educational institutions and the educational attainment levels of the local population, which play a crucial role in developing a skilled and adaptable workforce. Buncombe County's performance on this dimension is strong when compared to other North Carolina counties, ranking 13th in the state.

Notable variables for Buncombe County within this dimension include:

VARIABLE STRENGTH	FACTOR	BUNCOMBE COUNTY VALUE	NC COUNTY AVERAGE VALUE
<b>Top 10 in NC, Strongest</b>	Local LEA Financial Resources (per ADM)	\$17,776	\$8,683
<b>2nd Strongest</b>	Postsecondary Enrollment Percentage	29.59%	25.48%
<b>Weakest</b>	Teacher Attrition Rate	0.11	0.12

### Household Characteristics: 55.35

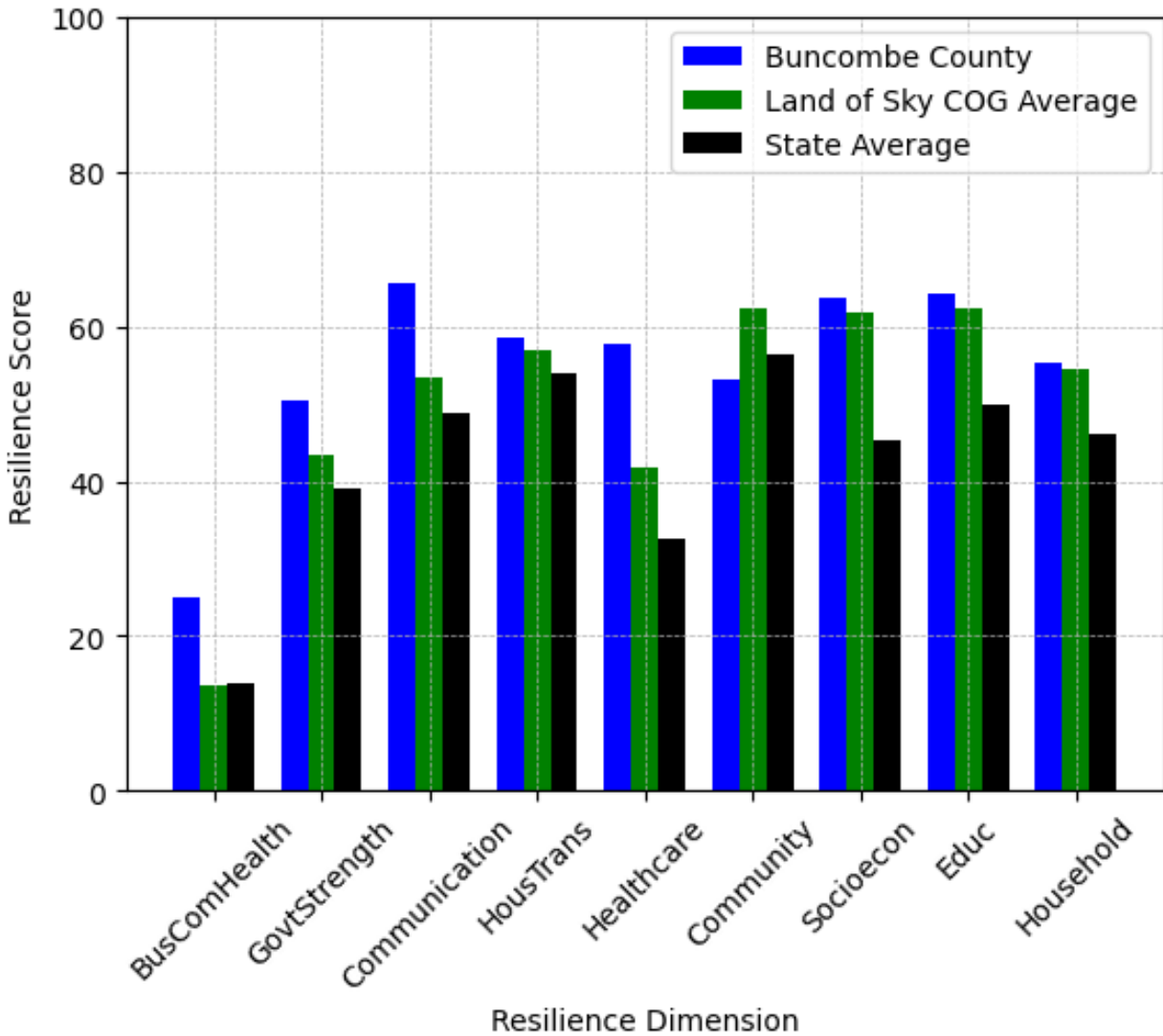
This component examines factors such as the proportion of single-parent households, age distribution, and the proportion of individuals with disabilities, as these elements can influence a community's resilience and ability to recover from economic disruptions. Buncombe County's performance on this dimension is fairly strong when compared to other North Carolina counties, ranking 19th in the state.

Notable variables for Buncombe County within this dimension include:

VARIABLE STRENGTH	FACTOR	BUNCOMBE COUNTY VALUE	NC COUNTY AVERAGE VALUE
<b>Strongest</b>	Percentage of Population with a Disability	13.614%	16.566%
<b>2nd Strongest</b>	Percentage of Population 17 and Younger	18.01%	20.37%
<b>Weakest</b>	Percentage of Population with Limited English Proficiency	2.193%	1.454%



## Buncombe County's Resilience Dimension Scores Over Time As Compared to the Region and State Averages



*Note: Resilience Scores are normalized from 1 to 100 with the most resilient county scoring 100. The Resilience Score is determined based on a county's performance relative to NC's other 99 counties.*

## **Notable Trends in Resilience Indicators, 2017-2022**

*NOTE: The key trends in the this section are identified based on change rates of at least .15 standard deviations over at least 5 years. Variables are positively oriented such that a positive trend indicates improved performance (e.g., 'improvement' in property crime is a lower crime rate, while 'decline' in property crime indicates a higher crime rate).*

### **Trends in the Business Community Health dimension:**

Total Employment Level: **5,997** (5-year change rate = **4.54%**, from 132,087 to 138,084)

→ No change in rank

Average Weekly Wages: **237 dollars** (5-year change rate = **27.85%**, from 851 to 1,088)

↑ Change in rank from 14 to 11 in NC

Real GDP in Current Dollars: **1,658,656 dollars** (5-year change rate = **12.13%**, from 13,677,960 to 15,336,616)

→ No change in rank

### **Trends in the County Government Fiscal Strength dimension:**

Adjusted Tax Base: **41,759 dollars** (5-year change rate = **35.51%**, from 117,604 to 159,363)

↑ Change in rank from 27 to 16 in NC

County Sales Tax: **38,779,064 dollars** (5-year change rate = **44.82%**, from 86,522,248 to 125,301,312)

→ No change in rank

### **Trends in the Housing & Transportation dimension:**

Ratio of Average Estimated Home Value to Median Income : **1.21** (5-year change rate = **60.55%**, from 1.99 to 3.2)

↓ Change in rank from 9 to 16 in NC

Average Available Rent Money less the Average HUD Fair Market Rent: **-123.1 dollars** (5-year change rate = **-23.65%**, from 520.5 to 397.4)



↓ Change in rank from 47 to 97 in NC

**Trends in the Healthcare dimension:**

Opioid Deaths per 100,000 Residents: **9** (5-year change rate = **20.18%**, from 44.6 to 53.6)

↑ Change in rank from 95 to 86 in NC

Nurses per 10,000 Residents: **-102.98** (5-year change rate = **-11.91%**, from 864.3 to 761.32)

↓ Change in rank from 7 to 8 in NC

Physicians per 10,000 Residents: **2.39** (5-year change rate = **5.57%**, from 42.88 to 45.27)

→ No change in rank

Mental Health Professionals per 10,000 Residents: **3.6** (5-year change rate = **20.91%**, from 17.22 to 20.82)

→ No change in rank

**Trends in the Community Cohesion dimension:**

Violent Crimes per 10,000 Residents: **0.89** (4-year change rate = **30.54%**, from 2.92 to 3.81)

↓ Change in rank from 69 to 71 in NC

Property Crimes per 10,000 Residents: **-0.9** (4-year change rate = **-3.53%**, from 25.35 to 24.46)

↓ Change in rank from 73 to 86 in NC

Nonprofits Organizations per 1,000 Residents: **0.47** (5-year change rate = **11.7%**, from 4.05 to 4.52)

↑ Change in rank from 20 to 17 in NC

### **Trends in the Socioeconomics dimension:**

Unemployment Rate (Q4): **-0.4 percent** (5-year change rate = **-12.5%**, from 3.2 to 2.8)

→ No change in rank

Median Household Income: **18,700 dollars** (5-year change rate = **30.51%**, from 61,300 to 80,000)

↓ Change in rank from 19 to 21 in NC

### **Trends in the Education dimension:**

Graduation Percentage: **3.45 percent** (5-year change rate = **3.93%**, from 87.8 to 91.25)

↑ Change in rank from 44 to 24 in NC

Dropout Rate: **-1.28 percent** (5-year change rate = **-50.52%**, from 2.53 to 1.25)

↑ Change in rank from 63 to 33 in NC

Student to Teacher Ratio: **-1** (4-year change rate = **-8.64%**, from 15 to 14)

↑ Change in rank from 54 to 35 in NC

3rd Grade Reading Proficiency: **-14.58 percent** (5-year change rate = **-23.27%**, from 62.66 to 48.09)

↓ Change in rank from 16 to 32 in NC

### **Data Advisements:**

- Availability of Broadband Services is not available for 2022 and was excluded from calculating this county's dimension and resilience score.
- Adoption Rate of Broadband Services is not available for 2022 and was excluded from calculating this county's dimension and resilience score.