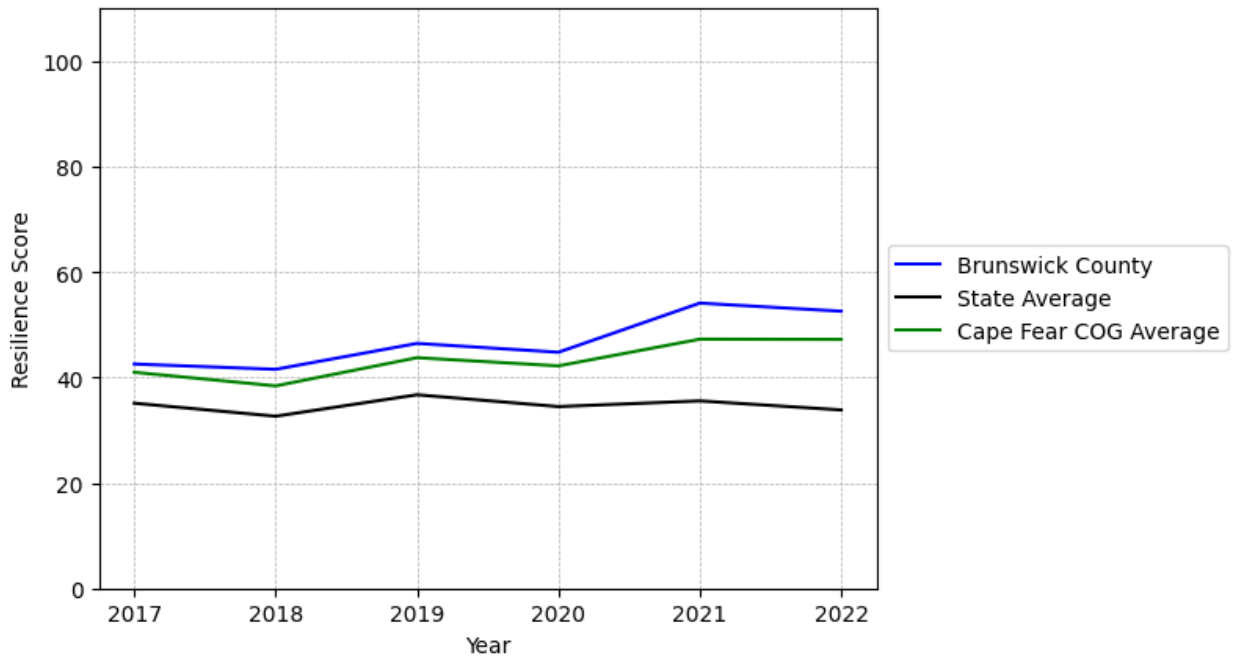


Brunswick County Summary

Resilience Score: 52.56

In 2022, Brunswick County achieved a Resilience Score of 52.56, which is fairly strong as compared to the North Carolina State average.

**Brunswick County's Resilience Score Over Time
As Compared to the Region and State Averages**



Note: Resilience Scores are normalized from 1 to 100 with the most resilient county scoring 100. The Resilience Score is determined based on a county's performance relative to NC's other 99 counties.

Brunswick County's Resilience Score is comprised of 9 distinct dimensions of resilience. Below are Brunswick County's scores for 2022 on those 9 dimensions, and their rank relative to other North Carolina counties.

Business Community Health: 8.84

This component examines the strength and diversity of the local business community, including factors such as the number of businesses, employment levels, and industry diversity. Brunswick County's performance on this dimension is average when compared to other North Carolina counties, ranking 66th in the state.

Notable variables for Brunswick County within this dimension include:

VARIABLE STRENGTH	FACTOR	BRUNSWICK COUNTY VALUE	NC COUNTY AVERAGE VALUE
Strongest	Percentage of Companies in Science, Engineering, & Technology Industries	8.68%	6.13%
2nd Strongest	Real GDP in Current Dollars	\$5,646,957	\$6,092,555
Bottom 10 in NC, Weakest	Ratio of Available Child Care Slots to Number of Children under Five	0.33	0.59

County Government Fiscal Strength: 64.67

This component looks at the financial health of local governments, including their ability to generate revenue, manage debt, and maintain adequate reserves to weather economic downturns. Brunswick County's performance on this dimension is fairly strong when compared to other North Carolina counties, ranking 14th in the state.

Notable variables for Brunswick County within this dimension include:

VARIABLE STRENGTH	FACTOR	BRUNSWICK COUNTY VALUE	NC COUNTY AVERAGE VALUE
Top 10 in NC, Strongest	Dependency Ratio of County Government	0.1	0.16
Top 10 in NC, 2nd Strongest	Adjusted Tax Base	\$213,524	\$124,092
Weakest	Capital Assets Condition Ratio of County Government	0.48	0.51

Communication: 65.38

This component assesses the availability and quality of communication infrastructure, such as broadband internet access, which is crucial for businesses and residents to stay connected and

resilient during disruptions. Brunswick County's performance on this dimension is fairly strong when compared to other North Carolina counties, ranking 24th in the state.

Notable variables for Brunswick County within this dimension include:

VARIABLE STRENGTH	FACTOR	BRUNSWICK COUNTY VALUE	NC COUNTY AVERAGE VALUE
Strongest	Percentage of Population without Smartphones	11.07%	17.22%
2nd Strongest	Broadband Availability	0.82	0.6
Weakest	Local High-Speed Mobile Data Availability	0.65	0.66

Housing & Transportation: 98.16

This component evaluates the accessibility and affordability of housing, as well as the availability of reliable transportation options, which are essential for a resilient workforce and economy.

Brunswick County's performance on this dimension is strong when compared to other North Carolina counties, ranking 3rd in the state.

Notable variables for Brunswick County within this dimension include:

VARIABLE STRENGTH	FACTOR	BRUNSWICK COUNTY VALUE	NC COUNTY AVERAGE VALUE
Top 10 in NC, Strongest	Percentage of Homes Built Before 1980	14.72%	40.9%
Top 10 in NC, 2nd Strongest	Percentage of Population without Vehicles	2.35%	5.75%
Weakest	Percentage of Owner-Occupied Homes	56.39%	57.87%

Healthcare: 17.58

The healthcare component examines the availability and quality of healthcare facilities, services, and professionals, which are critical for maintaining a healthy and productive workforce.

Brunswick County's performance on this dimension is fairly weak when compared to other North Carolina counties, ranking 80th in the state.

Notable variables for Brunswick County within this dimension include:

VARIABLE STRENGTH	FACTOR	BRUNSWICK COUNTY VALUE	NC COUNTY AVERAGE VALUE
Strongest	Nurses per 10,000	268.73	262.64

	Residents		
2nd Strongest	Opioid Deaths per 100,000 Residents	35.7	38.73
Bottom 10 in NC, Weakest	Nursing Home Beds per 1,000 Residents of Age 65+	11.62	27.53

Community Cohesion: 83.84

This component looks at the strength of social networks, community engagement, and the ability of residents to work together to address challenges and support one another during times of adversity. Brunswick County's performance on this dimension is strong when compared to other North Carolina counties, ranking 5th in the state.

Notable variables for Brunswick County within this dimension include:

VARIABLE STRENGTH	FACTOR	BRUNSWICK COUNTY VALUE	NC COUNTY AVERAGE VALUE
Top 10 in NC, Strongest	Yearly Population Change Percentage	5.313%	0.906%
2nd Strongest	Property Crimes per 10,000 Residents	9.28	15.74
Weakest	Percentage of Inactive Voters	10.74%	11.3%

Socioeconomics: 65.9

This component considers factors such as income levels, poverty rates, and inequality, which can impact a community's ability to withstand and recover from economic shocks. Brunswick County's performance on this dimension is fairly strong when compared to other North Carolina counties, ranking 18th in the state.

Notable variables for Brunswick County within this dimension include:

VARIABLE STRENGTH	FACTOR	BRUNSWICK COUNTY VALUE	NC COUNTY AVERAGE VALUE
Top 10 in NC, Strongest	Total Percentage of Population Below 150% Poverty Line	16.32%	25.93%
2nd Strongest	Percentage of Population without a High School Diploma	5.17%	9.05%
Weakest	Unemployment Rate (Q4)	4.6%	3.9%

Education: 60.78

This component evaluates the quality of educational institutions and the educational attainment levels of the local population, which play a crucial role in developing a skilled and adaptable workforce. Brunswick County's performance on this dimension is fairly strong when compared to other North Carolina counties, ranking 18th in the state.

Notable variables for Brunswick County within this dimension include:

VARIABLE STRENGTH	FACTOR	BRUNSWICK COUNTY VALUE	NC COUNTY AVERAGE VALUE
Top 10 in NC, Strongest	Local LEA Financial Resources (per ADM)	\$21,657	\$8,683
2nd Strongest	3rd Grade Reading Proficiency	56.3%	43.1%
Weakest	Graduation Percentage	85%	88.03%

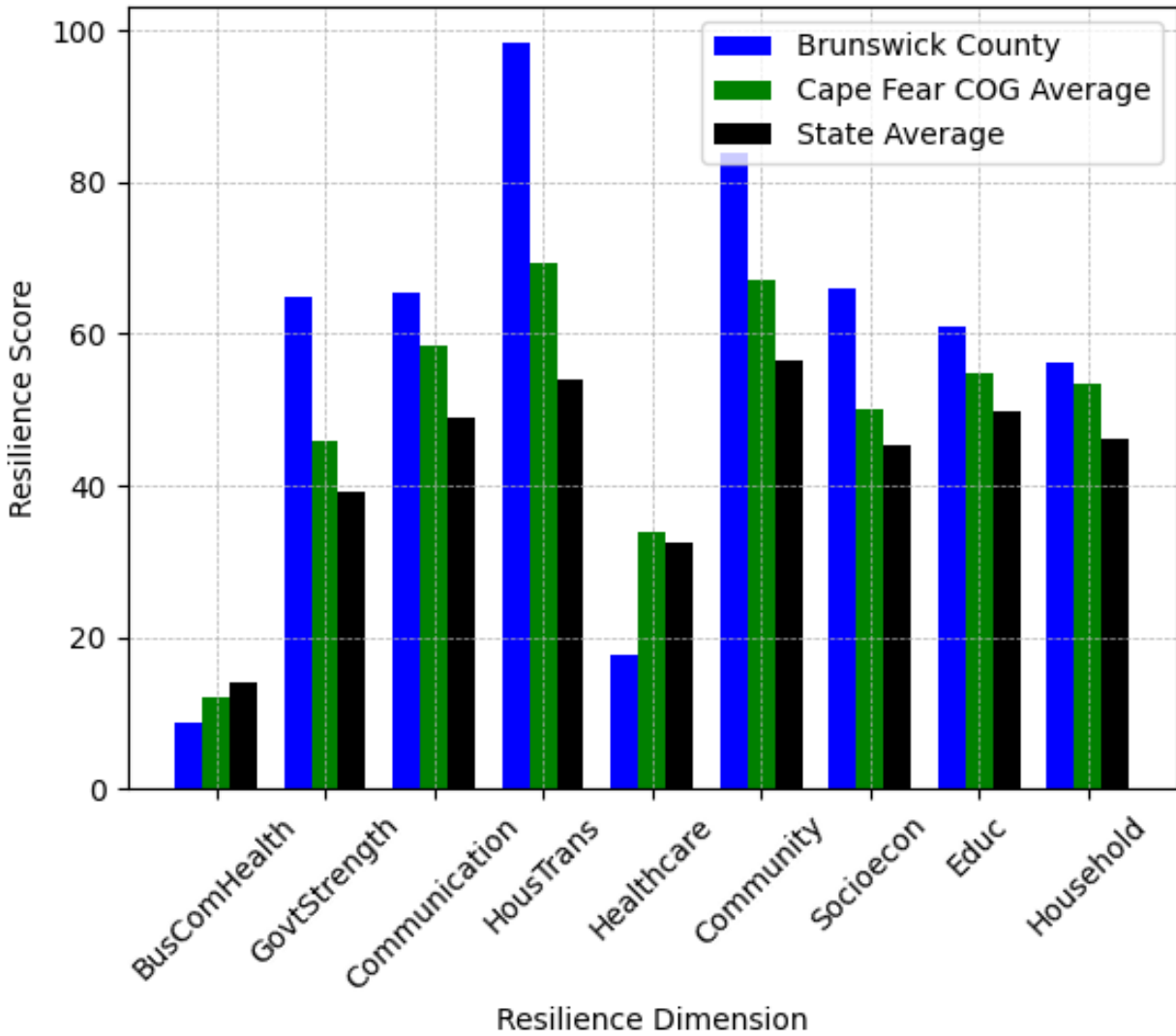
Household Characteristics: 56.21

This component examines factors such as the proportion of single-parent households, age distribution, and the proportion of individuals with disabilities, as these elements can influence a community's resilience and ability to recover from economic disruptions. Brunswick County's performance on this dimension is fairly strong when compared to other North Carolina counties, ranking 18th in the state.

Notable variables for Brunswick County within this dimension include:

VARIABLE STRENGTH	FACTOR	BRUNSWICK COUNTY VALUE	NC COUNTY AVERAGE VALUE
Top 10 in NC, Strongest	Percentage of Population 17 and Younger	14.47%	20.37%
2nd Strongest	Percentage of Population with Limited English Proficiency	0.428%	1.454%
Bottom 10 in NC, Weakest	Percentage of Population 65 and Older	32.74%	20.53%

Brunswick County's Resilience Dimension Scores Over Time As Compared to the Region and State Averages



Note: Resilience Scores are normalized from 1 to 100 with the most resilient county scoring 100. The Resilience Score is determined based on a county's performance relative to NC's other 99 counties.

Notable Trends in Resilience Indicators, 2017-2022

NOTE: The key trends in the this section are identified based on change rates of at least .15 standard deviations over at least 5 years. Variables are positively oriented such that a positive trend indicates improved performance (e.g., 'improvement' in property crime is a lower crime rate, while 'decline' in property crime indicates a higher crime rate).

Trends in the Business Community Health dimension:

Total Employment Level: **5,729** (5-year change rate = **18.01%**, from 31,811 to 37,540)

↑ Change in rank from 30 to 28 in NC

Average Weekly Wages: **208 dollars** (5-year change rate = **27.51%**, from 756 to 964)

↓ Change in rank from 32 to 35 in NC

Real GDP in Current Dollars: **650,284 dollars** (5-year change rate = **13.01%**, from 4,996,673 to 5,646,957)

↑ Change in rank from 21 to 20 in NC

Trends in the County Government Fiscal Strength dimension:

Adjusted Tax Base: **20,803 dollars** (5-year change rate = **10.79%**, from 192,721 to 213,524)

→ No change in rank

County Sales Tax: **19,457,828 dollars** (5-year change rate = **76.96%**, from 25,282,384 to 44,740,212)

↑ Change in rank from 19 to 18 in NC

Trends in the Housing & Transportation dimension:

Ratio of Average Estimated Home Value to Median Income : **1** (5-year change rate = **27.21%**, from 3.67 to 4.66)

→ No change in rank

Average Available Rent Money less the Average HUD Fair Market Rent: **600.5 dollars** (5-year change rate = **124.59%**, from 482 to 1,082.5)

↑ Change in rank from 58 to 12 in NC

Trends in the Healthcare dimension:

Opioid Deaths per 100,000 Residents: **-3.3** (5-year change rate = **-8.46%**, from 39 to 35.7)

↑ Change in rank from 89 to 46 in NC

Nurses per 10,000 Residents: **-18.62** (5-year change rate = **-6.48%**, from 287.35 to 268.73)

→ No change in rank

Physicians per 10,000 Residents: **-0.54** (5-year change rate = **-4.65%**, from 11.61 to 11.07)

↓ Change in rank from 50 to 55 in NC

Trends in the Community Cohesion dimension:

Property Crimes per 10,000 Residents: **-6.19** (4-year change rate = **-39.99%**, from 15.47 to 9.28)

↑ Change in rank from 38 to 16 in NC

Nonprofits Organizations per 1,000 Residents: **-0.15** (5-year change rate = **-4.4%**, from 3.45 to 3.3)

↓ Change in rank from 28 to 45 in NC

Trends in the Socioeconomics dimension:

Unemployment Rate (Q4): **-1 percent** (5-year change rate = **-18.45%**, from 5.6 to 4.6)

↑ Change in rank from 85 to 82 in NC

Median Household Income: **29,300 dollars** (5-year change rate = **51.05%**, from 57,400 to 86,700)

↑ Change in rank from 25 to 16 in NC

Trends in the Education dimension:

Graduation Percentage: **1.2 percent** (5-year change rate = **1.43%**, from 83.8 to 85)

↓ Change in rank from 76 to 83 in NC

Dropout Rate: **-0.89 percent** (5-year change rate = **-35.96%**, from 2.48 to 1.59)

↑ Change in rank from 60 to 49 in NC

Student to Teacher Ratio: **-1** (4-year change rate = **-3.26%**, from 15 to 15)

↓ Change in rank from 68 to 70 in NC

3rd Grade Reading Proficiency: **1.7 percent** (5-year change rate = **3.11%**, from 54.6 to 56.3)

↑ Change in rank from 48 to 11 in NC

Data Advisements:

- Availability of Broadband Services is not available for 2022 and was excluded from calculating this county's dimension and resilience score.
- Adoption Rate of Broadband Services is not available for 2022 and was excluded from calculating this county's dimension and resilience score.