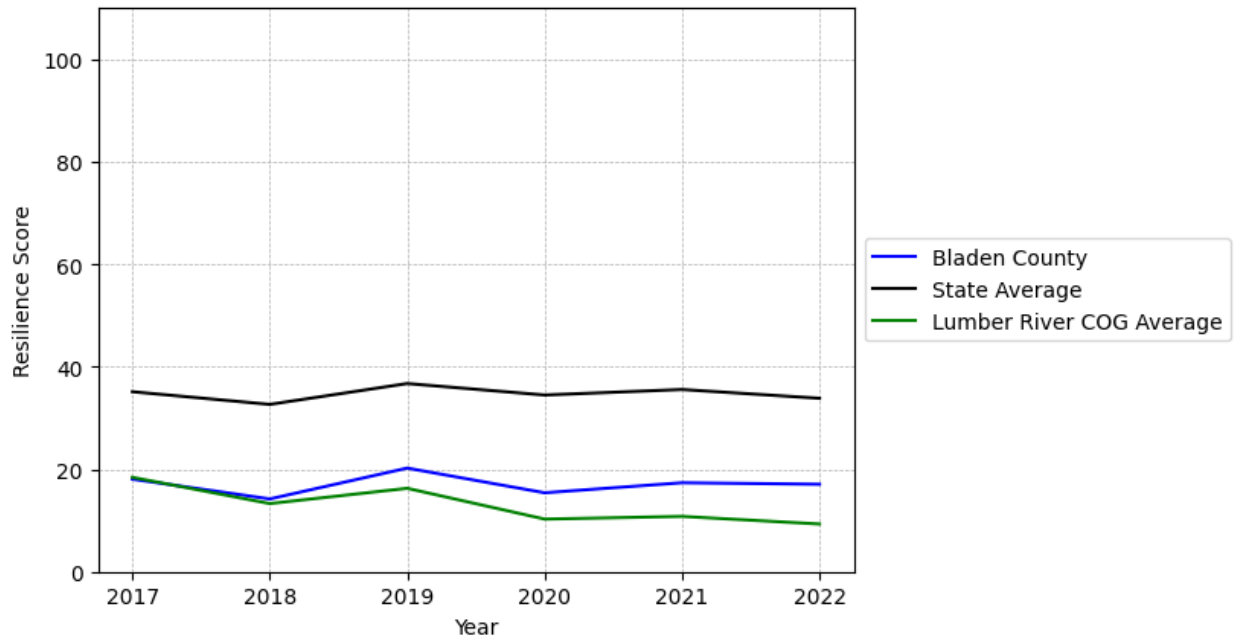


Bladen County Summary

Resilience Score: 17.07

In 2022, Bladen County achieved a Resilience Score of 17.07, which is fairly weak as compared to the North Carolina State average.

**Bladen County's Resilience Score Over Time
As Compared to the Region and State Averages**



Note: Resilience Scores are normalized from 1 to 100 with the most resilient county scoring 100. The Resilience Score is determined based on a county's performance relative to NC's other 99 counties.

Bladen County's Resilience Score is comprised of 9 distinct dimensions of resilience. Below are Bladen County's scores for 2022 on those 9 dimensions, and their rank relative to other North Carolina counties.

Business Community Health: 9.09

This component examines the strength and diversity of the local business community, including factors such as the number of businesses, employment levels, and industry diversity. Bladen County's performance on this dimension is average when compared to other North Carolina counties, ranking 64th in the state.

Notable variables for Bladen County within this dimension include:

VARIABLE STRENGTH	FACTOR	BLADEN COUNTY VALUE	NC COUNTY AVERAGE VALUE
Strongest	Private Sector Diversity	0.332	0.28
2nd Strongest	Ratio of Available Child Care Slots to Number of Children under Five	0.62	0.59
Weakest	Science, Engineering, & Technology Industries Employment Percentage	0.35%	1.79%

County Government Fiscal Strength: 42.11

This component looks at the financial health of local governments, including their ability to generate revenue, manage debt, and maintain adequate reserves to weather economic downturns. Bladen County's performance on this dimension is average when compared to other North Carolina counties, ranking 53rd in the state.

Notable variables for Bladen County within this dimension include:

VARIABLE STRENGTH	FACTOR	BLADEN COUNTY VALUE	NC COUNTY AVERAGE VALUE
Top 10 in NC, Strongest	Operations Ratio of County Government	1.23	1.11
2nd Strongest	Debt Service Ratio of County Government	0.03	0.07
Bottom 10 in NC, Weakest	Dependency Ratio of County Government	0.32	0.16

Communication: 43.15

This component assesses the availability and quality of communication infrastructure, such as broadband internet access, which is crucial for businesses and residents to stay connected and resilient during disruptions. Bladen County's performance on this dimension is average when compared to other North Carolina counties, ranking 71st in the state.

Notable variables for Bladen County within this dimension include:

VARIABLE STRENGTH	FACTOR	BLADEN COUNTY VALUE	NC COUNTY AVERAGE VALUE
Strongest	Local High-Speed Mobile Data Availability	0.67	0.66
2nd Strongest	In-Vehicle High-Speed Mobile Data Availability	0.29	0.37
Weakest	Percentage of Population without Smartphones	20.42%	17.22%

Housing & Transportation: 41.1

This component evaluates the accessibility and affordability of housing, as well as the availability of reliable transportation options, which are essential for a resilient workforce and economy. Bladen County's performance on this dimension is fairly weak when compared to other North Carolina counties, ranking 81st in the state.

Notable variables for Bladen County within this dimension include:

VARIABLE STRENGTH	FACTOR	BLADEN COUNTY VALUE	NC COUNTY AVERAGE VALUE
Strongest	Percentage of Households with More Residents than Rooms	1.43%	2.1%
2nd Strongest	Percentage of People Driving Alone to Work	86.73%	86.36%
Weakest	Average Available Rent Money less the Average HUD Fair Market Rent	\$516.7	\$799.87

Healthcare: 17.44

The healthcare component examines the availability and quality of healthcare facilities, services, and professionals, which are critical for maintaining a healthy and productive workforce. Bladen County's performance on this dimension is fairly weak when compared to other North Carolina counties, ranking 81st in the state.

Notable variables for Bladen County within this dimension include:

VARIABLE STRENGTH	FACTOR	BLADEN COUNTY VALUE	NC COUNTY AVERAGE VALUE
Strongest	Nursing Home Beds per 1,000 Residents of Age	32.18	27.53

	65+		
2nd Strongest	Nurses per 10,000 Residents	130.69	262.64
Bottom 10 in NC, Weakest	Mental Health Professionals per 10,000 Residents	2.4	6.6

Community Cohesion: 51.37

This component looks at the strength of social networks, community engagement, and the ability of residents to work together to address challenges and support one another during times of adversity. Bladen County's performance on this dimension is average when compared to other North Carolina counties, ranking 69th in the state.

Notable variables for Bladen County within this dimension include:

VARIABLE STRENGTH	FACTOR	BLADEN COUNTY VALUE	NC COUNTY AVERAGE VALUE
Strongest	Nonprofits Organizations per 1,000 Residents	3.56	3.17
2nd Strongest	Percentage of Inactive Voters	11.36%	11.3%
Weakest	Yearly Population Change Percentage	-0.559%	0.906%

Socioeconomics: 23.26

This component considers factors such as income levels, poverty rates, and inequality, which can impact a community's ability to withstand and recover from economic shocks. Bladen County's performance on this dimension is weak when compared to other North Carolina counties, ranking 82nd in the state.

Notable variables for Bladen County within this dimension include:

VARIABLE STRENGTH	FACTOR	BLADEN COUNTY VALUE	NC COUNTY AVERAGE VALUE
Strongest	Percentage of Population without Health Insurance	9.96%	11.23%
2nd Strongest	Percentage of Population without a High School Diploma	8.47%	9.05%
Bottom 10 in NC	Median Household Income	\$52,3	\$70,088
Bottom 10 in NC,	Gini Coefficient (Income	0.53	0.46

Weakest

Inequality)

Education: 30.59

This component evaluates the quality of educational institutions and the educational attainment levels of the local population, which play a crucial role in developing a skilled and adaptable workforce. Bladen County's performance on this dimension is fairly weak when compared to other North Carolina counties, ranking 79th in the state.

Notable variables for Bladen County within this dimension include:

VARIABLE STRENGTH	FACTOR	BLADEN COUNTY VALUE	NC COUNTY AVERAGE VALUE
Strongest	Graduation Percentage	92.1%	88.03%
2nd Strongest	Dropout Rate	2.06%	1.65%
Bottom 10 in NC, Weakest	3rd Grade Reading Proficiency	28.5%	43.1%

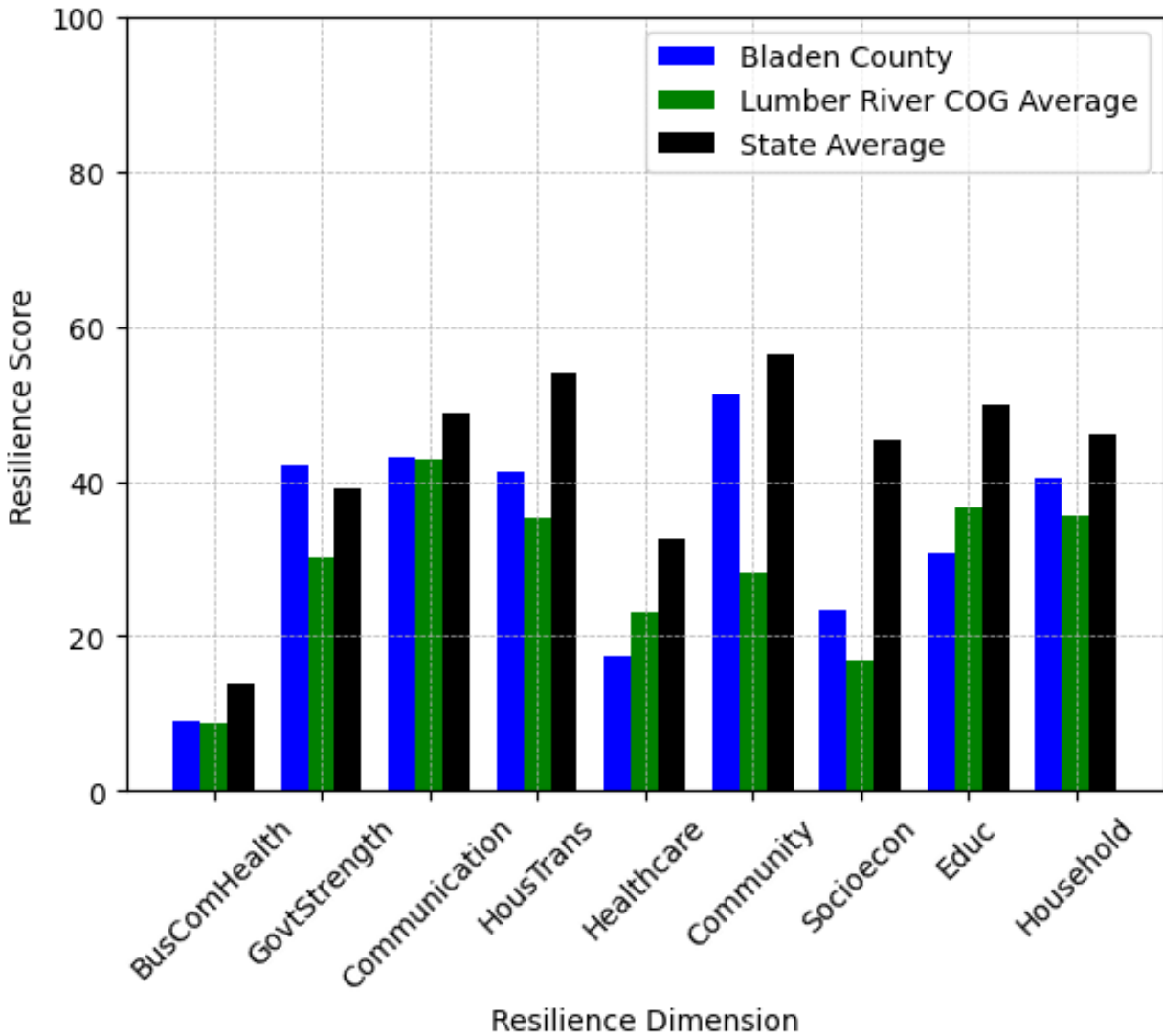
Household Characteristics: 40.38

This component examines factors such as the proportion of single-parent households, age distribution, and the proportion of individuals with disabilities, as these elements can influence a community's resilience and ability to recover from economic disruptions. Bladen County's performance on this dimension is average when compared to other North Carolina counties, ranking 69th in the state.

Notable variables for Bladen County within this dimension include:

VARIABLE STRENGTH	FACTOR	BLADEN COUNTY VALUE	NC COUNTY AVERAGE VALUE
Strongest	Percentage of Population with a Disability	14.845%	16.566%
2nd Strongest	Percentage of Population 17 and Younger	20.28%	20.37%
Weakest	Percentage of Single Parent Households	42.338%	36.132%

Bladen County's Resilience Dimension Scores Over Time As Compared to the Region and State Averages



Note: Resilience Scores are normalized from 1 to 100 with the most resilient county scoring 100. The Resilience Score is determined based on a county's performance relative to NC's other 99 counties.

Notable Trends in Resilience Indicators, 2017-2022

NOTE: The key trends in the this section are identified based on change rates of at least .15 standard deviations over at least 5 years. Variables are positively oriented such that a positive trend indicates improved performance (e.g., 'improvement' in property crime is a lower crime rate, while 'decline' in property crime indicates a higher crime rate).

Trends in the Business Community Health dimension:

Total Employment Level: **726** (5-year change rate = **5.64%**, from 12,877 to 13,604)

→ No change in rank

Average Weekly Wages: **207 dollars** (5-year change rate = **29.2%**, from 709 to 916)

↑ Change in rank from 57 to 49 in NC

Real GDP in Current Dollars: **-68,242 dollars** (5-year change rate = **-4.6%**, from 1,482,037 to 1,413,795)

↓ Change in rank from 59 to 63 in NC

Ratio of Available Child Care Slots to Number of Children under Five: **-0.16** (5-year change rate = **-20.62%**, from 0.78 to 0.62)

↓ Change in rank from 20 to 41 in NC

Trends in the County Government Fiscal Strength dimension:

Adjusted Tax Base: **27,764 dollars** (5-year change rate = **35.3%**, from 78,641 to 106,405)

↑ Change in rank from 56 to 49 in NC

County Sales Tax: **1,665,480 dollars** (5-year change rate = **29.17%**, from 5,709,572 to 7,375,052)

↓ Change in rank from 73 to 74 in NC

Trends in the Housing & Transportation dimension:

Ratio of Average Estimated Home Value to Median Income : **3.96** (5-year change rate = **63.71%**, from 6.22 to 10.18)

↓ Change in rank from 50 to 58 in NC

Average Available Rent Money less the Average HUD Fair Market Rent: **78.4 dollars** (5-year change rate = **17.89%**, from 438.3 to 516.7)

↓ Change in rank from 70 to 85 in NC

Trends in the Healthcare dimension:

Opioid Deaths per 100,000 Residents: **28** (5-year change rate = **133.97%**, from 20.9 to 48.9)

↓ Change in rank from 42 to 83 in NC

Nurses per 10,000 Residents: **-13.8** (5-year change rate = **-9.55%**, from 144.49 to 130.69)

↓ Change in rank from 60 to 62 in NC

Physicians per 10,000 Residents: **-2.62** (5-year change rate = **-32.35%**, from 8.1 to 5.48)

↓ Change in rank from 69 to 85 in NC

Mental Health Professionals per 10,000 Residents: **0.78** (5-year change rate = **48.15%**, from 1.62 to 2.4)

↑ Change in rank from 98 to 92 in NC

Trends in the Community Cohesion dimension:

Violent Crimes per 10,000 Residents: **3.07** (4-year change rate = **9,337.47%**, from 0.03 to 3.1)

↓ Change in rank from 4 to 62 in NC

Property Crimes per 10,000 Residents: **15.22** (4-year change rate = **1,323.11%**, from 1.15 to 16.37)

↓ Change in rank from 4 to 62 in NC

Nonprofits Organizations per 1,000 Residents: **0.39** (5-year change rate = **12.22%**, from 3.17 to 3.56)

↓ Change in rank from 35 to 39 in NC

Trends in the Socioeconomics dimension:

Unemployment Rate (Q4): **-1.5 percent** (5-year change rate = **-26.16%**, from 5.7 to 4.2)

↑ Change in rank from 88 to 76 in NC

Median Household Income: **8,400 dollars** (5-year change rate = **19.13%**, from 43,900 to 52,300)

↓ Change in rank from 89 to 94 in NC

Trends in the Education dimension:

Graduation Percentage: **5.6 percent** (5-year change rate = **6.47%**, from 86.5 to 92.1)

↑ Change in rank from 54 to 18 in NC

Dropout Rate: **-0.86 percent** (5-year change rate = **-29.35%**, from 2.92 to 2.06)

↑ Change in rank from 77 to 69 in NC

Student to Teacher Ratio: **1** (4-year change rate = **3.67%**, from 15 to 16)

↓ Change in rank from 56 to 82 in NC

3rd Grade Reading Proficiency: **-15.2 percent** (5-year change rate = **-34.78%**, from 43.7 to 28.5)

↓ Change in rank from 87 to 92 in NC

Data Advisements:

- Availability of Broadband Services is not available for 2022 and was excluded from calculating this county's dimension and resilience score.
- Adoption Rate of Broadband Services is not available for 2022 and was excluded from calculating this county's dimension and resilience score.