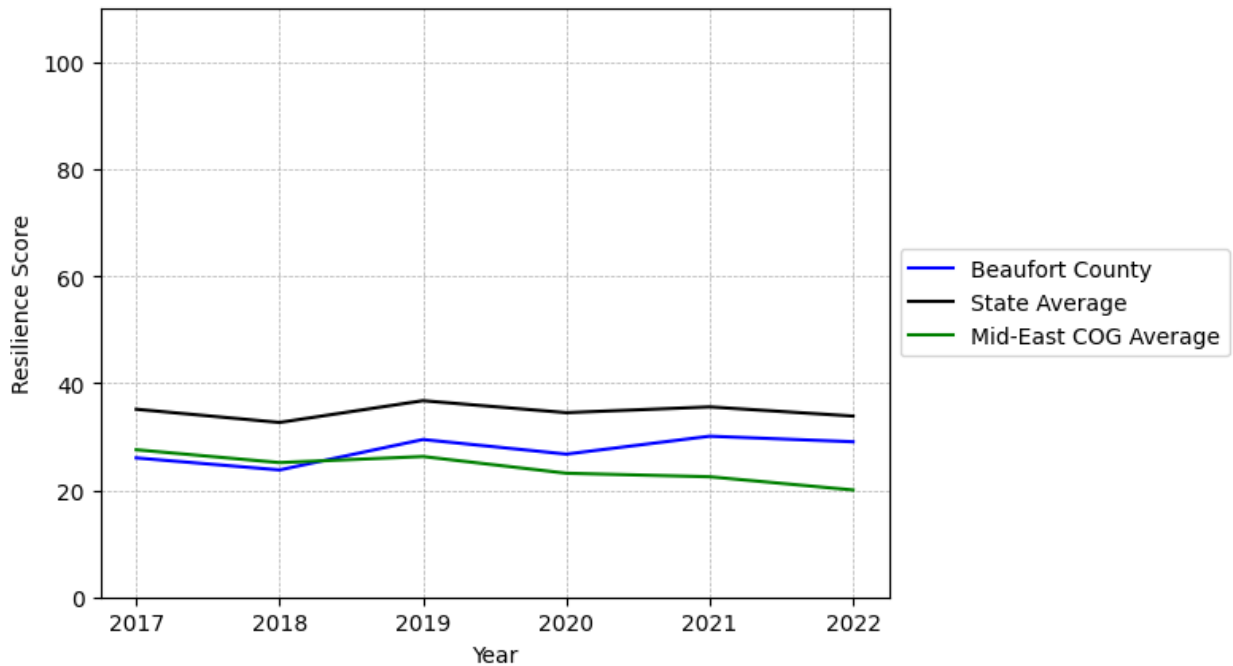


Beaufort County Summary

Resilience Score: 29.04

In 2022, Beaufort County achieved a Resilience Score of 29.04, which is average as compared to the North Carolina State average.

**Beaufort County's Resilience Score Over Time
As Compared to the Region and State Averages**



Note: Resilience Scores are normalized from 1 to 100 with the most resilient county scoring 100. The Resilience Score is determined based on a county's performance relative to NC's other 99 counties.

Beaufort County's Resilience Score is comprised of 9 distinct dimensions of resilience. Below are Beaufort County's scores for 2022 on those 9 dimensions, and their rank relative to other North Carolina counties.

Business Community Health: 14.21

This component examines the strength and diversity of the local business community, including factors such as the number of businesses, employment levels, and industry diversity. Beaufort County's performance on this dimension is average when compared to other North Carolina counties, ranking 31st in the state.

Notable variables for Beaufort County within this dimension include:

VARIABLE STRENGTH	FACTOR	BEAUFORT COUNTY VALUE	NC COUNTY AVERAGE VALUE
Strongest	Ratio of Available Child Care Slots to Number of Children under Five	0.81	0.59
2nd Strongest	Science, Engineering, & Technology Industries Employment Percentage	1.18%	1.79%
Weakest	Total Employment Level	15,763	45,758

County Government Fiscal Strength: 46.83

This component looks at the financial health of local governments, including their ability to generate revenue, manage debt, and maintain adequate reserves to weather economic downturns. Beaufort County's performance on this dimension is average when compared to other North Carolina counties, ranking 42nd in the state.

Notable variables for Beaufort County within this dimension include:

VARIABLE STRENGTH	FACTOR	BEAUFORT COUNTY VALUE	NC COUNTY AVERAGE VALUE
Top 10 in NC, Strongest	Operations Ratio of County Government	1.23	1.11
2nd Strongest	Debt Service Ratio of County Government	0.04	0.07
Weakest	Quick Ratio of County Government	7.8	16.4

Communication: 37.21

This component assesses the availability and quality of communication infrastructure, such as broadband internet access, which is crucial for businesses and residents to stay connected and resilient during disruptions. Beaufort County's performance on this dimension is fairly weak when compared to other North Carolina counties, ranking 77th in the state.

Notable variables for Beaufort County within this dimension include:

VARIABLE STRENGTH	FACTOR	BEAUFORT COUNTY VALUE	NC COUNTY AVERAGE VALUE
Strongest	Percentage of Population without Smartphones	18.85%	17.22%
2nd Strongest	Local High-Speed Mobile Data Availability	0.59	0.66
Weakest	Broadband Availability	0.43	0.6

Housing & Transportation: 53.64

This component evaluates the accessibility and affordability of housing, as well as the availability of reliable transportation options, which are essential for a resilient workforce and economy. Beaufort County's performance on this dimension is average when compared to other North Carolina counties, ranking 60th in the state.

Notable variables for Beaufort County within this dimension include:

VARIABLE STRENGTH	FACTOR	BEAUFORT COUNTY VALUE	NC COUNTY AVERAGE VALUE
Strongest	Percentage of Households with More Residents than Rooms	1.48%	2.1%
2nd Strongest	Average Available Rent Money less the Average HUD Fair Market Rent	\$861.6	\$799.87
Bottom 10 in NC, Weakest	Percentage of People Driving Alone to Work	90.32%	86.36%

Healthcare: 23.43

The healthcare component examines the availability and quality of healthcare facilities, services, and professionals, which are critical for maintaining a healthy and productive workforce. Beaufort County's performance on this dimension is average when compared to other North Carolina counties, ranking 64th in the state.

Notable variables for Beaufort County within this dimension include:

VARIABLE STRENGTH	FACTOR	BEAUFORT COUNTY VALUE	NC COUNTY AVERAGE VALUE
Strongest	Mental Health Professionals per 10,000 Residents	9.01	6.6

2nd Strongest	Nurses per 10,000 Residents	190.82	262.64
Weakest	Opioid Deaths per 100,000 Residents	48.9	38.73

Community Cohesion: 57.54

This component looks at the strength of social networks, community engagement, and the ability of residents to work together to address challenges and support one another during times of adversity. Beaufort County's performance on this dimension is average when compared to other North Carolina counties, ranking 48th in the state.

Notable variables for Beaufort County within this dimension include:

VARIABLE STRENGTH	FACTOR	BEAUFORT COUNTY VALUE	NC COUNTY AVERAGE VALUE
Top 10 in NC, Strongest	Property Crimes per 10,000 Residents	6.89	15.74
2nd Strongest	Violent Crimes per 10,000 Residents	1.07	3.07
Weakest	Nonprofits Organizations per 1,000 Residents	1.24	3.17

Socioeconomics: 34.34

This component considers factors such as income levels, poverty rates, and inequality, which can impact a community's ability to withstand and recover from economic shocks. Beaufort County's performance on this dimension is average when compared to other North Carolina counties, ranking 71st in the state.

Notable variables for Beaufort County within this dimension include:

VARIABLE STRENGTH	FACTOR	BEAUFORT COUNTY VALUE	NC COUNTY AVERAGE VALUE
Strongest	Percentage of Households with Income over \$200k	4.25%	5.28%
2nd Strongest	Percentage of Population without a High School Diploma	9.66%	9.05%
Weakest	Percentage of Households Spending more than 30% Income on Housing	28.63%	24.53%

Education: 56.21

This component evaluates the quality of educational institutions and the educational attainment levels of the local population, which play a crucial role in developing a skilled and adaptable workforce. Beaufort County's performance on this dimension is fairly strong when compared to other North Carolina counties, ranking 29th in the state.

Notable variables for Beaufort County within this dimension include:

VARIABLE STRENGTH	FACTOR	BEAUFORT COUNTY VALUE	NC COUNTY AVERAGE VALUE
Strongest	Student to Teacher Ratio	13	14
2nd Strongest	Teacher Attrition Rate	0.09	0.12
Weakest	Postsecondary Enrollment Percentage	22.76%	25.48%

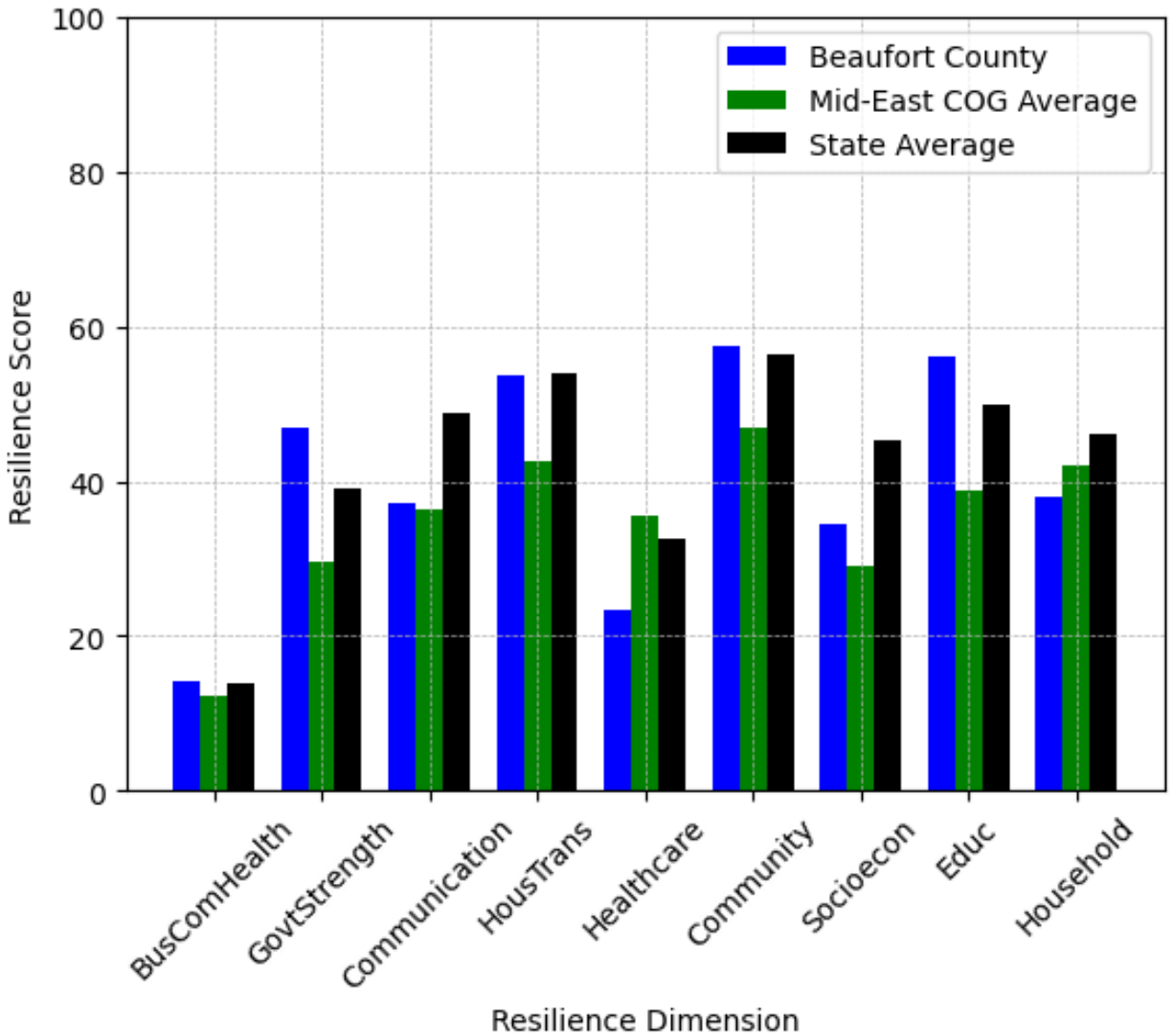
Household Characteristics: 38.1

This component examines factors such as the proportion of single-parent households, age distribution, and the proportion of individuals with disabilities, as these elements can influence a community's resilience and ability to recover from economic disruptions. Beaufort County's performance on this dimension is average when compared to other North Carolina counties, ranking 74th in the state.

Notable variables for Beaufort County within this dimension include:

VARIABLE STRENGTH	FACTOR	BEAUFORT COUNTY VALUE	NC COUNTY AVERAGE VALUE
Strongest	Percentage of Population 17 and Younger	19.57%	20.37%
2nd Strongest	Percentage of Population with Limited English Proficiency	0.944%	1.454%
Weakest	Percentage of Population 65 and Older	24.44%	20.53%

Beaufort County's Resilience Dimension Scores Over Time As Compared to the Region and State Averages



Note: Resilience Scores are normalized from 1 to 100 with the most resilient county scoring 100. The Resilience Score is determined based on a county's performance relative to NC's other 99 counties.

Notable Trends in Resilience Indicators, 2017-2022

NOTE: The key trends in the this section are identified based on change rates of at least .15 standard deviations over at least 5 years. Variables are positively oriented such that a positive trend indicates improved performance (e.g., 'improvement' in property crime is a lower crime rate, while 'decline' in property crime indicates a higher crime rate).

Trends in the Business Community Health dimension:

Total Employment Level: **-181** (5-year change rate = **-1.13%**, from 15,944 to 15,763)

→ No change in rank

Average Weekly Wages: **181 dollars** (5-year change rate = **24.69%**, from 733 to 914)

↓ Change in rank from 41 to 50 in NC

Real GDP in Current Dollars: **-462,904 dollars** (5-year change rate = **-19.91%**, from 2,324,540 to 1,861,636)

↓ Change in rank from 42 to 49 in NC

Trends in the County Government Fiscal Strength dimension:

Adjusted Tax Base: **15,366 dollars** (5-year change rate = **13.16%**, from 116,749 to 132,115)

↓ Change in rank from 28 to 34 in NC

County Sales Tax: **4,246,967 dollars** (5-year change rate = **46.23%**, from 9,187,090 to 13,434,057)

↓ Change in rank from 55 to 57 in NC

Trends in the Housing & Transportation dimension:

Ratio of Average Estimated Home Value to Median Income : **1.92** (5-year change rate = **29.41%**, from 6.51 to 8.43)

↑ Change in rank from 54 to 51 in NC

Average Available Rent Money less the Average HUD Fair Market Rent: **264 dollars** (5-year change rate = **44.18%**, from 597.6 to 861.6)

↓ Change in rank from 30 to 41 in NC

Trends in the Healthcare dimension:

Opioid Deaths per 100,000 Residents: **6.4** (5-year change rate = **15.06%**, from 42.5 to 48.9)

↑ Change in rank from 94 to 82 in NC

Nurses per 10,000 Residents: **1.11** (5-year change rate = **0.59%**, from 189.71 to 190.82)

↑ Change in rank from 46 to 43 in NC

Physicians per 10,000 Residents: **2.71** (5-year change rate = **28%**, from 9.68 to 12.39)

↑ Change in rank from 59 to 50 in NC

Trends in the Community Cohesion dimension:

Violent Crimes per 10,000 Residents: **-1.24** (4-year change rate = **-53.63%**, from 2.3 to 1.07)

↑ Change in rank from 53 to 12 in NC

Property Crimes per 10,000 Residents: **-14.49** (4-year change rate = **-67.78%**, from 21.38 to 6.89)

↑ Change in rank from 60 to 10 in NC

Trends in the Socioeconomics dimension:

Unemployment Rate (Q4): **-0.8 percent** (5-year change rate = **-17.36%**, from 4.8 to 4)

↑ Change in rank from 71 to 68 in NC

Median Household Income: **13,800 dollars** (5-year change rate = **26.34%**, from 52,400 to 66,200)

↓ Change in rank from 47 to 58 in NC

Trends in the Education dimension:

Graduation Percentage: **4.5 percent** (5-year change rate = **5.29%**, from 85.1 to 89.6)

↑ Change in rank from 66 to 35 in NC

Dropout Rate: **-1.75 percent** (5-year change rate = **-55.18%**, from 3.18 to 1.43)

↑ Change in rank from 83 to 41 in NC

Student to Teacher Ratio: **-1** (4-year change rate = **-8.43%**, from 14 to 13)

↑ Change in rank from 26 to 18 in NC

3rd Grade Reading Proficiency: **-11.1 percent** (5-year change rate = **-19.79%**, from 56.1 to 45)

↓ Change in rank from 39 to 44 in NC

Data Advisements:

- Availability of Broadband Services is not available for 2022 and was excluded from calculating this county's dimension and resilience score.
- Adoption Rate of Broadband Services is not available for 2022 and was excluded from calculating this county's dimension and resilience score.