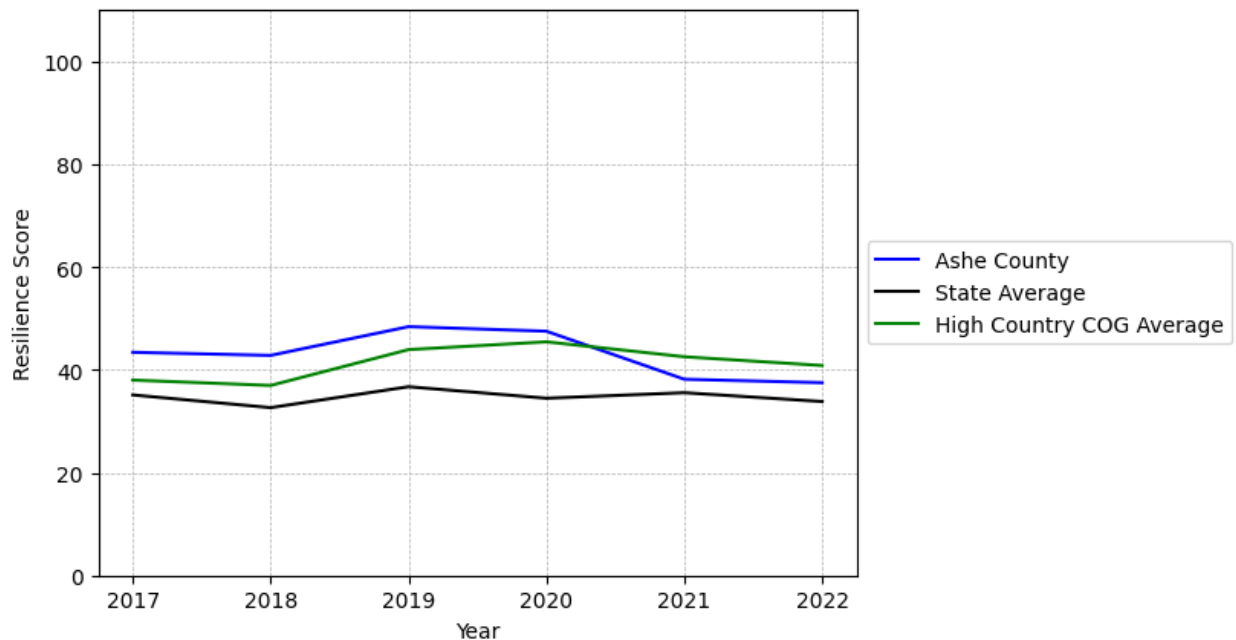


Ashe County Summary

Resilience Score: 37.5

In 2022, Ashe County achieved a Resilience Score of 37.5, which is average as compared to the North Carolina State average.

**Ashe County's Resilience Score Over Time
As Compared to the Region and State Averages**



Note: Resilience Scores are normalized from 1 to 100 with the most resilient county scoring 100. The Resilience Score is determined based on a county's performance relative to NC's other 99 counties.

Ashe County's Resilience Score is comprised of 9 distinct dimensions of resilience. Below are Ashe County's scores for 2022 on those 9 dimensions, and their rank relative to other North Carolina counties.

Business Community Health: 8.68

This component examines the strength and diversity of the local business community, including factors such as the number of businesses, employment levels, and industry diversity. Ashe County's performance on this dimension is average when compared to other North Carolina counties, ranking 68th in the state.

Notable variables for Ashe County within this dimension include:

VARIABLE STRENGTH	FACTOR	ASHE COUNTY VALUE	NC COUNTY AVERAGE VALUE
Strongest	Private Sector Diversity	0.331	0.28
2nd Strongest	Science, Engineering, & Technology Industries Employment Percentage	1.37%	1.79%
Weakest	Ratio of Available Child Care Slots to Number of Children under Five	0.43	0.59

County Government Fiscal Strength: 51.71

This component looks at the financial health of local governments, including their ability to generate revenue, manage debt, and maintain adequate reserves to weather economic downturns. Ashe County's performance on this dimension is average when compared to other North Carolina counties, ranking 33rd in the state.

Notable variables for Ashe County within this dimension include:

VARIABLE STRENGTH	FACTOR	ASHE COUNTY VALUE	NC COUNTY AVERAGE VALUE
Strongest	Debt Service Ratio of County Government	0.03	0.07
2nd Strongest	Adjusted Tax Base	\$159,609	\$124,092
Weakest	Solvency Ratio of County Government	33.67	46.7

Communication: 42.81

This component assesses the availability and quality of communication infrastructure, such as broadband internet access, which is crucial for businesses and residents to stay connected and resilient during disruptions. Ashe County's performance on this dimension is average when compared to other North Carolina counties, ranking 72nd in the state.

Notable variables for Ashe County within this dimension include:

VARIABLE STRENGTH	FACTOR	ASHE COUNTY VALUE	NC COUNTY AVERAGE VALUE
Top 10 in NC, Strongest	Broadband Availability	0.99	0.6
2nd Strongest	Percentage of Population without Smartphones	21.63%	17.22%
Bottom 10 in NC	In-Vehicle High-Speed Mobile Data Availability	0.16	0.37
Bottom 10 in NC, Weakest	Local High-Speed Mobile Data Availability	0.29	0.66

Housing & Transportation: 64.66

This component evaluates the accessibility and affordability of housing, as well as the availability of reliable transportation options, which are essential for a resilient workforce and economy. Ashe County's performance on this dimension is average when compared to other North Carolina counties, ranking 43rd in the state.

Notable variables for Ashe County within this dimension include:

VARIABLE STRENGTH	FACTOR	ASHE COUNTY VALUE	NC COUNTY AVERAGE VALUE
Strongest	Percentage of Households with More Residents than Rooms	1.14%	2.1%
2nd Strongest	Percentage of People Driving Alone to Work	85.42%	86.36%
Weakest	Ratio of Average Estimated Home Value to Median Income	16.85	13.67

Healthcare: 26.35

The healthcare component examines the availability and quality of healthcare facilities, services, and professionals, which are critical for maintaining a healthy and productive workforce. Ashe County's performance on this dimension is average when compared to other North Carolina counties, ranking 49th in the state.

Notable variables for Ashe County within this dimension include:

VARIABLE STRENGTH	FACTOR	ASHE COUNTY VALUE	NC COUNTY AVERAGE VALUE
Strongest	Opioid Deaths per	25.7	38.73

	100,000 Residents		
2nd Strongest	Nursing Home Beds per 1,000 Residents of Age 65+	29.24	27.53
Weakest	Nurses per 10,000 Residents	92.05	262.64

Community Cohesion: 72.81

This component looks at the strength of social networks, community engagement, and the ability of residents to work together to address challenges and support one another during times of adversity. Ashe County's performance on this dimension is fairly strong when compared to other North Carolina counties, ranking 16th in the state.

Notable variables for Ashe County within this dimension include:

VARIABLE STRENGTH	FACTOR	ASHE COUNTY VALUE	NC COUNTY AVERAGE VALUE
Top 10 in NC, Strongest	Percentage of Inactive Voters	8.09%	11.3%
2nd Strongest	Violent Crimes per 10,000 Residents	1.23	3.07
Weakest	Nonprofits Organizations per 1,000 Residents	3.29	3.17

Socioeconomics: 47.74

This component considers factors such as income levels, poverty rates, and inequality, which can impact a community's ability to withstand and recover from economic shocks. Ashe County's performance on this dimension is average when compared to other North Carolina counties, ranking 45th in the state.

Notable variables for Ashe County within this dimension include:

VARIABLE STRENGTH	FACTOR	ASHE COUNTY VALUE	NC COUNTY AVERAGE VALUE
Top 10 in NC, Strongest	Percentage of Households Spending more than 30% Income on Housing	17.87%	24.53%
2nd Strongest	Unemployment Rate (Q4)	3.3%	3.9%
Bottom 10 in NC, Weakest	Percentage of Households with Income over \$200k	2.03%	5.28%

Education: 53.41

This component evaluates the quality of educational institutions and the educational attainment levels of the local population, which play a crucial role in developing a skilled and adaptable workforce. Ashe County's performance on this dimension is average when compared to other North Carolina counties, ranking 38th in the state.

Notable variables for Ashe County within this dimension include:

VARIABLE STRENGTH	FACTOR	ASHE COUNTY VALUE	NC COUNTY AVERAGE VALUE
Top 10 in NC, Strongest	3rd Grade Reading Proficiency	56.9%	43.1%
Top 10 in NC, 2nd Strongest	Teacher Attrition Rate	0.07	0.12
Weakest	Dropout Rate	2.37%	1.65%

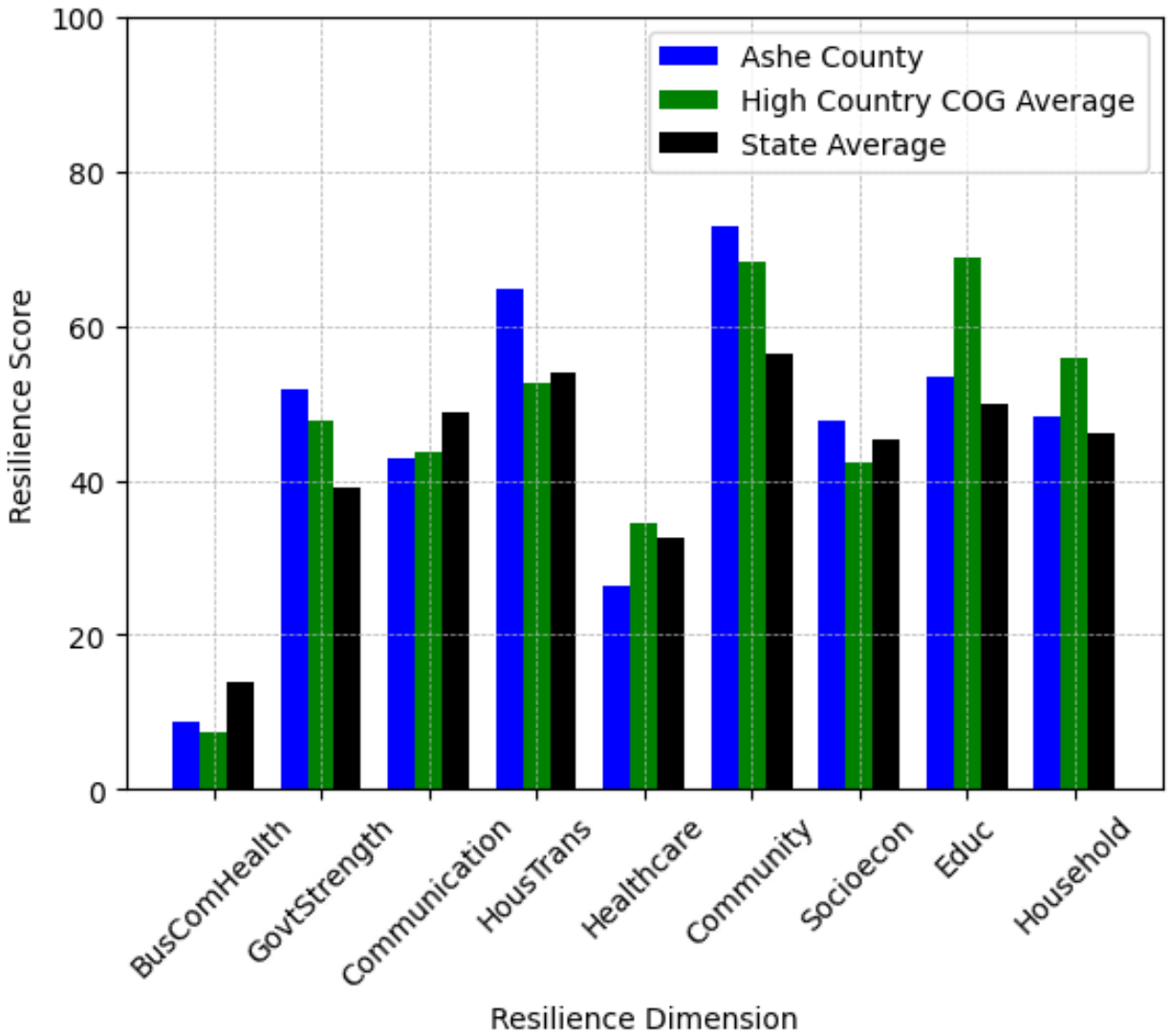
Household Characteristics: 48.19

This component examines factors such as the proportion of single-parent households, age distribution, and the proportion of individuals with disabilities, as these elements can influence a community's resilience and ability to recover from economic disruptions. Ashe County's performance on this dimension is average when compared to other North Carolina counties, ranking 37th in the state.

Notable variables for Ashe County within this dimension include:

VARIABLE STRENGTH	FACTOR	ASHE COUNTY VALUE	NC COUNTY AVERAGE VALUE
Strongest	Percentage of Population 17 and Younger	16.9%	20.37%
2nd Strongest	Percentage of Single Parent Households	30.759%	36.132%
Weakest	Percentage of Population 65 and Older	26.61%	20.53%

Ashe County's Resilience Dimension Scores Over Time As Compared to the Region and State Averages



Note: Resilience Scores are normalized from 1 to 100 with the most resilient county scoring 100. The Resilience Score is determined based on a county's performance relative to NC's other 99 counties.

Notable Trends in Resilience Indicators, 2017-2022

NOTE: The key trends in the this section are identified based on change rates of at least .15 standard deviations over at least 5 years. Variables are positively oriented such that a positive trend indicates improved performance (e.g., 'improvement' in property crime is a lower crime rate, while 'decline' in property crime indicates a higher crime rate).

Trends in the Business Community Health dimension:

Total Employment Level: **-58** (5-year change rate = **-0.79%**, from 7,378 to 7,320)

↓ Change in rank from 75 to 76 in NC

Average Weekly Wages: **194 dollars** (5-year change rate = **27.25%**, from 712 to 906)

→ No change in rank

Real GDP in Current Dollars: **-17,794 dollars** (5-year change rate = **-2.24%**, from 795,602 to 777,808)

↓ Change in rank from 73 to 76 in NC

Ratio of Available Child Care Slots to Number of Children under Five: **-0.45** (5-year change rate = **-51.38%**, from 0.88 to 0.43)

↓ Change in rank from 12 to 83 in NC

Trends in the County Government Fiscal Strength dimension:

Adjusted Tax Base: **17,686 dollars** (5-year change rate = **12.46%**, from 141,923 to 159,609)

→ No change in rank

County Sales Tax: **3,211,544 dollars** (5-year change rate = **51.26%**, from 6,265,420 to 9,476,964)

→ No change in rank

Trends in the Housing & Transportation dimension:

Ratio of Average Estimated Home Value to Median Income : **4.32** (5-year change rate = **34.46%**, from 12.53 to 16.85)

↓ Change in rank from 78 to 79 in NC

Average Available Rent Money less the Average HUD Fair Market Rent: **234.1 dollars** (5-year change rate = **49.98%**, from 468.4 to 702.5)

↑ Change in rank from 63 to 61 in NC

Trends in the Healthcare dimension:

Opioid Deaths per 100,000 Residents: **10.9** (5-year change rate = **73.65%**, from 14.8 to 25.7)

↓ Change in rank from 20 to 25 in NC

Nurses per 10,000 Residents: **2.25** (5-year change rate = **2.51%**, from 89.8 to 92.05)

↑ Change in rank from 81 to 76 in NC

Physicians per 10,000 Residents: **-3.1** (5-year change rate = **-28.23%**, from 10.98 to 7.88)

↓ Change in rank from 52 to 73 in NC

Mental Health Professionals per 10,000 Residents: **-1.56** (5-year change rate = **-22.87%**, from 6.82 to 5.26)

↓ Change in rank from 28 to 54 in NC

Trends in the Community Cohesion dimension:

Violent Crimes per 10,000 Residents: **-0.42** (4-year change rate = **-25.62%**, from 1.65 to 1.23)

↑ Change in rank from 33 to 16 in NC

Property Crimes per 10,000 Residents: **-1.67** (4-year change rate = **-13.23%**, from 12.64 to 10.96)

↓ Change in rank from 22 to 23 in NC

Nonprofits Organizations per 1,000 Residents: **-1.03** (5-year change rate = **-23.86%**, from 4.32 to 3.29)

↓ Change in rank from 16 to 46 in NC

Trends in the Socioeconomics dimension:

Unemployment Rate (Q4): **-0.4 percent** (5-year change rate = **-10.81%**, from 3.7 to 3.3)

↓ Change in rank from 13 to 23 in NC

Median Household Income: **12,700 dollars** (5-year change rate = **26.91%**, from 47,200 to 59,900)

↑ Change in rank from 71 to 69 in NC

Trends in the Education dimension:

Graduation Percentage: **-1.1 percent** (5-year change rate = **-1.26%**, from 87.2 to 86.1)

↓ Change in rank from 48 to 77 in NC

Dropout Rate: **0.7 percent** (5-year change rate = **41.85%**, from 1.67 to 2.37)

↓ Change in rank from 28 to 81 in NC

3rd Grade Reading Proficiency: **-6.7 percent** (5-year change rate = **-10.53%**, from 63.6 to 56.9)

↑ Change in rank from 14 to 7 in NC

Data Advisements:

- Availability of Broadband Services is not available for 2022 and was excluded from calculating this county's dimension and resilience score.
- Adoption Rate of Broadband Services is not available for 2022 and was excluded from calculating this county's dimension and resilience score.