

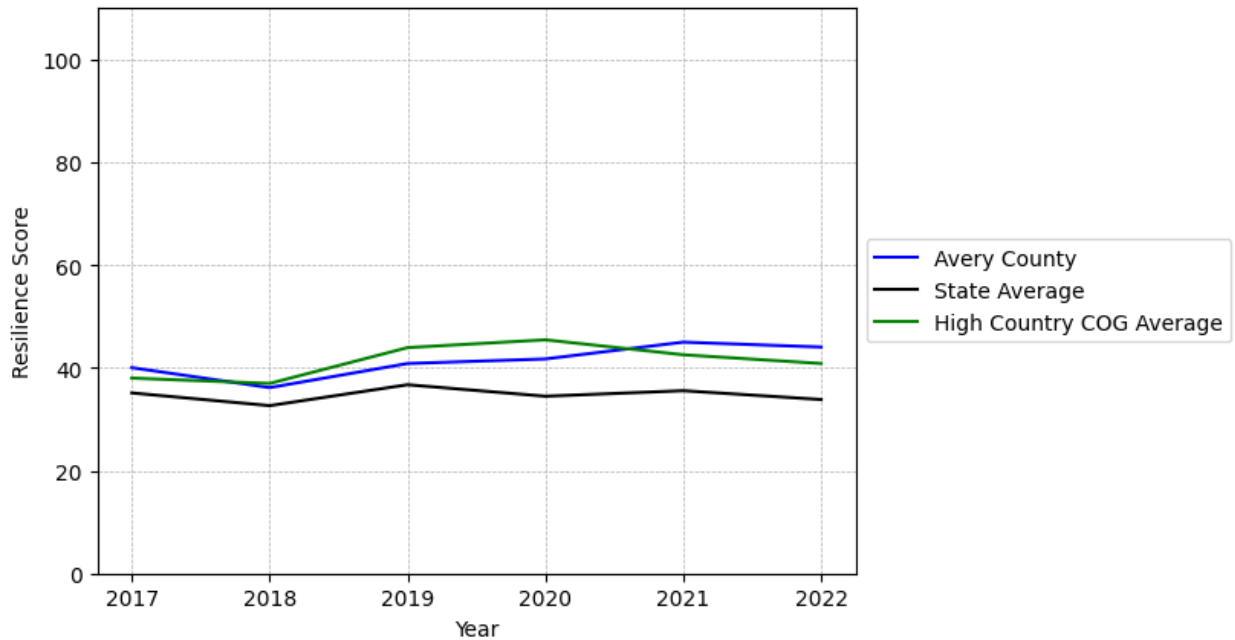
# Avery County Summary

---

**Resilience Score: 44.04**

In 2022, Avery County achieved a Resilience Score of 44.04, which is fairly strong as compared to the North Carolina State average.

**Avery County's Resilience Score Over Time  
As Compared to the Region and State Averages**



*Note: Resilience Scores are normalized from 1 to 100 with the most resilient county scoring 100. The Resilience Score is determined based on a county's performance relative to NC's other 99 counties.*

Avery County's Resilience Score is comprised of 9 distinct dimensions of resilience. Below are Avery County's scores for 2022 on those 9 dimensions, and their rank relative to other North Carolina counties.

### **Business Community Health: 3.87**

This component examines the strength and diversity of the local business community, including factors such as the number of businesses, employment levels, and industry diversity. Avery County's performance on this dimension is fairly weak when compared to other North Carolina counties, ranking 95th in the state.

Notable variables for Avery County within this dimension include:

<b>VARIABLE STRENGTH</b>	<b>FACTOR</b>	<b>AVERY COUNTY VALUE</b>	<b>NC COUNTY AVERAGE VALUE</b>
<b>Strongest</b>	Private Sector Diversity	0.312	0.28
<b>2nd Strongest</b>	Percentage of Companies in Science, Engineering, & Technology Industries	4.71%	6.13%
<b>Weakest</b>	Ratio of Available Child Care Slots to Number of Children under Five	0.42	0.59

---

### **County Government Fiscal Strength: 90.38**

This component looks at the financial health of local governments, including their ability to generate revenue, manage debt, and maintain adequate reserves to weather economic downturns. Avery County's performance on this dimension is strong when compared to other North Carolina counties, ranking 4th in the state.

Notable variables for Avery County within this dimension include:

<b>VARIABLE STRENGTH</b>	<b>FACTOR</b>	<b>AVERY COUNTY VALUE</b>	<b>NC COUNTY AVERAGE VALUE</b>
<b>Top 10 in NC, Strongest</b>	Adjusted Tax Base	\$269,347	\$124,092
<b>Top 10 in NC, 2nd Strongest</b>	Solvency Ratio of County Government	85.84	46.7
<b>Top 10 in NC</b>	Quick Ratio of County Government	40.05	16.4
<b>Top 10 in NC</b>	Dependency Ratio of County Government	0.09	0.16
<b>Weakest</b>	County Sales Tax	\$8,823,289	\$31,151,902

---

### **Communication: 57.02**

This component assesses the availability and quality of communication infrastructure, such as broadband internet access, which is crucial for businesses and residents to stay connected and

resilient during disruptions. Avery County's performance on this dimension is average when compared to other North Carolina counties, ranking 36th in the state.

Notable variables for Avery County within this dimension include:

VARIABLE STRENGTH	FACTOR	AVERY COUNTY VALUE	NC COUNTY AVERAGE VALUE
<b>Strongest</b>	Broadband Availability	0.69	0.6
<b>2nd Strongest</b>	In-Vehicle High-Speed Mobile Data Availability	0.38	0.37
<b>Weakest</b>	Percentage of Population without Smartphones	16.2%	17.22%

### **Housing & Transportation: 37.62**

This component evaluates the accessibility and affordability of housing, as well as the availability of reliable transportation options, which are essential for a resilient workforce and economy. Avery County's performance on this dimension is weak when compared to other North Carolina counties, ranking 85th in the state.

Notable variables for Avery County within this dimension include:

VARIABLE STRENGTH	FACTOR	AVERY COUNTY VALUE	NC COUNTY AVERAGE VALUE
<b>Strongest</b>	Percentage of People with Commute Times Over 45 Minutes	10.71%	16.69%
<b>2nd Strongest</b>	Percentage of Homes Built Before 1980	37.36%	40.9%
<b>Bottom 10 in NC</b>	Ratio of Average Estimated Home Value to Median Income	33.31	13.67
<b>Bottom 10 in NC, Weakest</b>	Percentage of Owner-Occupied Homes	36.59%	57.87%

### **Healthcare: 28.41**

The healthcare component examines the availability and quality of healthcare facilities, services, and professionals, which are critical for maintaining a healthy and productive workforce. Avery County's performance on this dimension is average when compared to other North Carolina counties, ranking 42nd in the state.

Notable variables for Avery County within this dimension include:

VARIABLE STRENGTH	FACTOR	AVERY COUNTY VALUE	NC COUNTY AVERAGE VALUE
Top 10 in NC, Strongest	Opioid Deaths per 100,000 Residents	17.1	38.73
2nd Strongest	Physicians per 10,000 Residents	17.27	16.05
Bottom 10 in NC, Weakest	Mental Health Professionals per 10,000 Residents	2.23	6.6

### Community Cohesion: 69.67

This component looks at the strength of social networks, community engagement, and the ability of residents to work together to address challenges and support one another during times of adversity. Avery County's performance on this dimension is fairly strong when compared to other North Carolina counties, ranking 21st in the state.

Notable variables for Avery County within this dimension include:

VARIABLE STRENGTH	FACTOR	AVERY COUNTY VALUE	NC COUNTY AVERAGE VALUE
Top 10 in NC, Strongest	Property Crimes per 10,000 Residents	6.5	15.74
2nd Strongest	Violent Crimes per 10,000 Residents	1.26	3.07
Weakest	Yearly Population Change Percentage	0.277%	0.906%

### Socioeconomics: 38.94

This component considers factors such as income levels, poverty rates, and inequality, which can impact a community's ability to withstand and recover from economic shocks. Avery County's performance on this dimension is average when compared to other North Carolina counties, ranking 60th in the state.

Notable variables for Avery County within this dimension include:

VARIABLE STRENGTH	FACTOR	AVERY COUNTY VALUE	NC COUNTY AVERAGE VALUE
Top 10 in NC, Strongest	Percentage of Households Spending more than 30% Income on Housing	18.95%	24.53%
2nd Strongest	Unemployment Rate (Q4)	3.2%	3.9%
Bottom 10 in NC,	Percentage of Population	14.64%	11.23%

<b>Weakest</b>	without Health Insurance
----------------	--------------------------

**Education: 69.25**

This component evaluates the quality of educational institutions and the educational attainment levels of the local population, which play a crucial role in developing a skilled and adaptable workforce. Avery County's performance on this dimension is strong when compared to other North Carolina counties, ranking 8th in the state.

Notable variables for Avery County within this dimension include:

VARIABLE STRENGTH	FACTOR	AVERY COUNTY VALUE	NC COUNTY AVERAGE VALUE
<b>Top 10 in NC, Strongest</b>	Local LEA Financial Resources (per ADM)	\$18,322	\$8,683
<b>Top 10 in NC, 2nd Strongest</b>	Student to Teacher Ratio	12	14
<b>Weakest</b>	Teacher Attrition Rate	0.12	0.12

**Household Characteristics: 63.67**

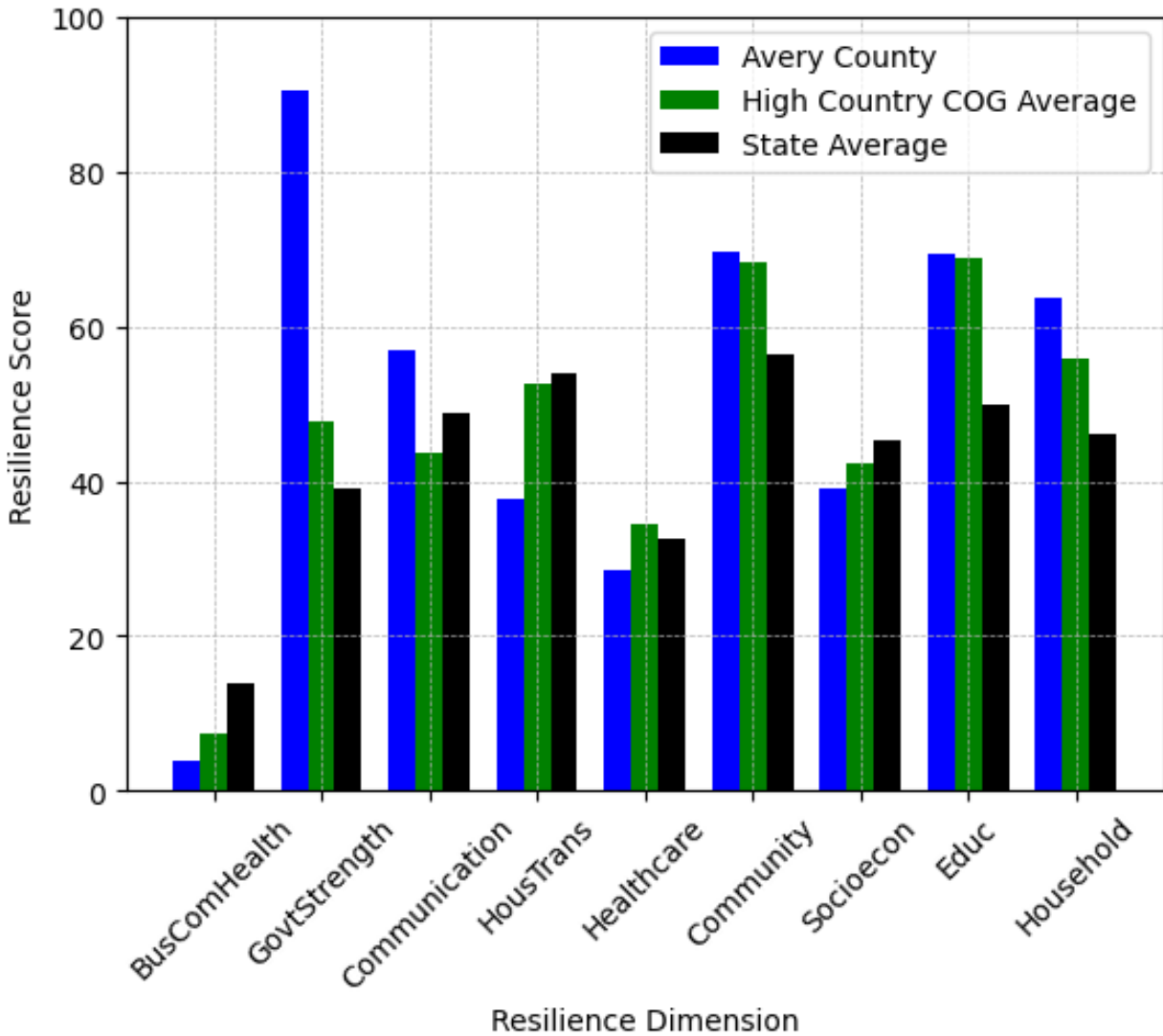
This component examines factors such as the proportion of single-parent households, age distribution, and the proportion of individuals with disabilities, as these elements can influence a community's resilience and ability to recover from economic disruptions. Avery County's performance on this dimension is strong when compared to other North Carolina counties, ranking 7th in the state.

Notable variables for Avery County within this dimension include:

VARIABLE STRENGTH	FACTOR	AVERY COUNTY VALUE	NC COUNTY AVERAGE VALUE
<b>Top 10 in NC, Strongest</b>	Percentage of Population 17 and Younger	13.89%	20.37%
<b>2nd Strongest</b>	Percentage of Single Parent Households	25.596%	36.132%
<b>Weakest</b>	Percentage of Population with a Disability	19.016%	16.566%



## Avery County's Resilience Dimension Scores Over Time As Compared to the Region and State Averages



*Note: Resilience Scores are normalized from 1 to 100 with the most resilient county scoring 100. The Resilience Score is determined based on a county's performance relative to NC's other 99 counties.*

## **Notable Trends in Resilience Indicators, 2017-2022**

*NOTE: The key trends in the this section are identified based on change rates of at least .15 standard deviations over at least 5 years. Variables are positively oriented such that a positive trend indicates improved performance (e.g., 'improvement' in property crime is a lower crime rate, while 'decline' in property crime indicates a higher crime rate).*

### **Trends in the Business Community Health dimension:**

Total Employment Level: **222** (5-year change rate = **3.32%**, from 6,698 to 6,920)

↑ Change in rank from 78 to 77 in NC

Average Weekly Wages: **209 dollars** (5-year change rate = **32.5%**, from 643 to 852)

↑ Change in rank from 90 to 81 in NC

Real GDP in Current Dollars: **5,488 dollars** (5-year change rate = **0.88%**, from 624,682 to 630,170)

↑ Change in rank from 81 to 80 in NC

Ratio of Available Child Care Slots to Number of Children under Five: **-0.32** (5-year change rate = **-43.42%**, from 0.74 to 0.42)

↓ Change in rank from 27 to 84 in NC

### **Trends in the County Government Fiscal Strength dimension:**

Adjusted Tax Base: **32,238 dollars** (5-year change rate = **13.6%**, from 237,109 to 269,347)

→ No change in rank

County Sales Tax: **3,930,927 dollars** (5-year change rate = **80.35%**, from 4,892,362 to 8,823,289)

↑ Change in rank from 75 to 73 in NC

### **Trends in the Housing & Transportation dimension:**

Ratio of Average Estimated Home Value to Median Income : **12.67** (5-year change rate = **61.4%**, from 20.64 to 33.31)

↓ Change in rank from 85 to 91 in NC



Average Available Rent Money less the Average HUD Fair Market Rent: **123.5 dollars** (5-year change rate = **32.15%**, from 384.1 to 507.6)

↓ Change in rank from 82 to 86 in NC

**Trends in the Healthcare dimension:**

Opioid Deaths per 100,000 Residents: **11.4** (5-year change rate = **200%**, from 5.7 to 17.1)

↓ Change in rank from 4 to 5 in NC

Nurses per 10,000 Residents: **-18.56** (5-year change rate = **-16.61%**, from 111.75 to 93.19)

↓ Change in rank from 72 to 74 in NC

Physicians per 10,000 Residents: **3.74** (5-year change rate = **27.64%**, from 13.53 to 17.27)

↑ Change in rank from 47 to 30 in NC

Mental Health Professionals per 10,000 Residents: **-1.71** (5-year change rate = **-43.4%**, from 3.94 to 2.23)

↓ Change in rank from 74 to 94 in NC

**Trends in the Community Cohesion dimension:**

Violent Crimes per 10,000 Residents: **-0.31** (4-year change rate = **-19.65%**, from 1.57 to 1.26)

↑ Change in rank from 29 to 17 in NC

Property Crimes per 10,000 Residents: **-6.43** (4-year change rate = **-49.76%**, from 12.93 to 6.5)

↑ Change in rank from 23 to 9 in NC

Nonprofits Organizations per 1,000 Residents: **1.76** (5-year change rate = **70.3%**, from 2.5 to 4.26)

↑ Change in rank from 62 to 19 in NC

**Trends in the Socioeconomics dimension:**

Unemployment Rate (Q4): **-0.7 percent** (5-year change rate = **-18.8%**, from 3.9 to 3.2)

↑ Change in rank from 24 to 16 in NC

Median Household Income: **7,900 dollars** (5-year change rate = **16.7%**, from 47,300 to 55,200)

↓ Change in rank from 70 to 86 in NC

**Trends in the Education dimension:**

Graduation Percentage: **-8.9 percent** (5-year change rate = **-8.9%**, from 100 to 91.1)

↓ Change in rank from 2 to 25 in NC

Dropout Rate: **0.32 percent** (5-year change rate = **22.54%**, from 1.43 to 1.75)

↓ Change in rank from 19 to 58 in NC

3rd Grade Reading Proficiency: **1.4 percent** (5-year change rate = **2.62%**, from 53.5 to 54.9)

↑ Change in rank from 53 to 13 in NC

**Data Advisements:**

- This county has a population under 20,000 residents according to the US Census Bureau; in low population areas, some variable estimates can be less stable and more sensitive to changes.
- Availability of Broadband Services is not available for 2022 and was excluded from calculating this county's dimension and resilience score.
- Adoption Rate of Broadband Services is not available for 2022 and was excluded from calculating this county's dimension and resilience score.