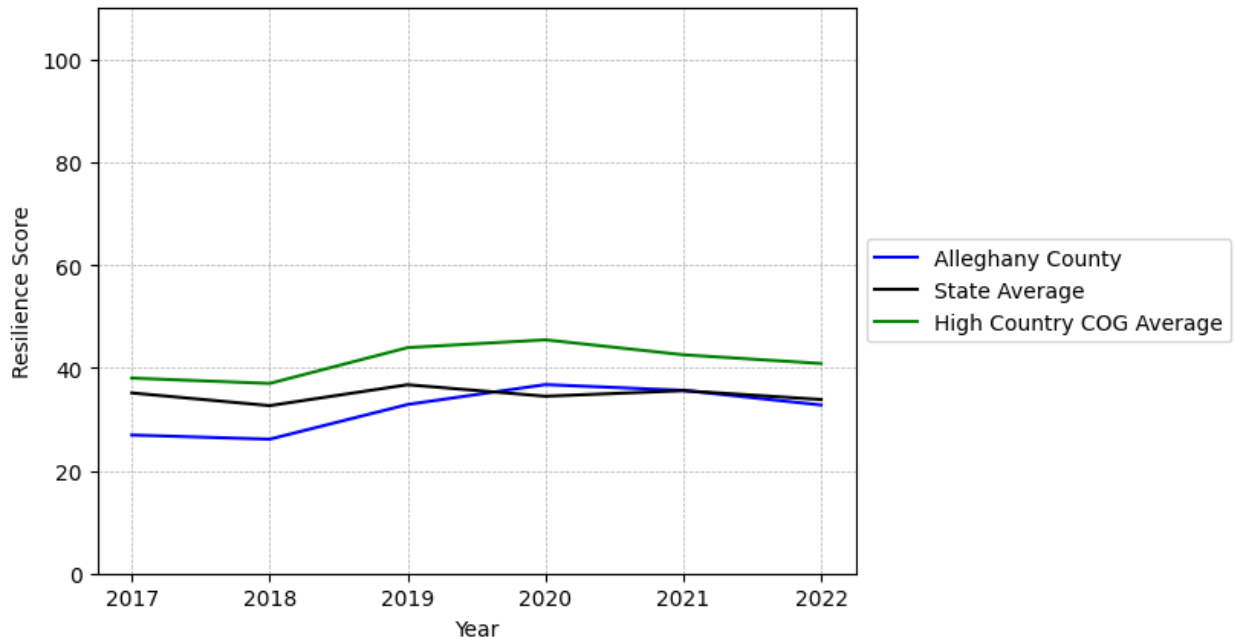


Alleghany County Summary

Resilience Score: 32.77

In 2022, Alleghany County achieved a Resilience Score of 32.77, which is average as compared to the North Carolina State average.

**Alleghany County's Resilience Score Over Time
As Compared to the Region and State Averages**



Note: Resilience Scores are normalized from 1 to 100 with the most resilient county scoring 100. The Resilience Score is determined based on a county's performance relative to NC's other 99 counties.

Alleghany County's Resilience Score is comprised of 9 distinct dimensions of resilience. Below are Alleghany County's scores for 2022 on those 9 dimensions, and their rank relative to other North Carolina counties.

Business Community Health: 9.14

This component examines the strength and diversity of the local business community, including factors such as the number of businesses, employment levels, and industry diversity. Alleghany County's performance on this dimension is average when compared to other North Carolina counties, ranking 62nd in the state.

Notable variables for Alleghany County within this dimension include:

VARIABLE STRENGTH	FACTOR	ALLEGHANY COUNTY VALUE	NC COUNTY AVERAGE VALUE
Strongest	Private Sector Diversity	0.5	0.28
2nd Strongest	Ratio of Available Child Care Slots to Number of Children under Five	0.58	0.59
Bottom 10 in NC, Weakest	Average Weekly Wages	\$779	\$951

County Government Fiscal Strength: 56.44

This component looks at the financial health of local governments, including their ability to generate revenue, manage debt, and maintain adequate reserves to weather economic downturns. Alleghany County's performance on this dimension is fairly strong when compared to other North Carolina counties, ranking 25th in the state.

Notable variables for Alleghany County within this dimension include:

VARIABLE STRENGTH	FACTOR	ALLEGHANY COUNTY VALUE	NC COUNTY AVERAGE VALUE
Top 10 in NC, Strongest	Operations Ratio of County Government	1.23	1.11
2nd Strongest	Adjusted Tax Base	\$159,224	\$124,092
Bottom 10 in NC, Weakest	County Sales Tax	\$2,968,77	\$31,151,902

Communication: 49.73

This component assesses the availability and quality of communication infrastructure, such as broadband internet access, which is crucial for businesses and residents to stay connected and resilient during disruptions. Alleghany County's performance on this dimension is average when compared to other North Carolina counties, ranking 53rd in the state.

Notable variables for Alleghany County within this dimension include:

VARIABLE STRENGTH	FACTOR	ALLEGHANY COUNTY VALUE	NC COUNTY AVERAGE VALUE
Top 10 in NC, Strongest	Broadband Availability	0.95	0.6
2nd Strongest	In-Vehicle High-Speed Mobile Data Availability	0.3	0.37
Weakest	Percentage of Population without Smartphones	22.5%	17.22%

Housing & Transportation: 36.35

This component evaluates the accessibility and affordability of housing, as well as the availability of reliable transportation options, which are essential for a resilient workforce and economy. Alleghany County's performance on this dimension is weak when compared to other North Carolina counties, ranking 87th in the state.

Notable variables for Alleghany County within this dimension include:

VARIABLE STRENGTH	FACTOR	ALLEGHANY COUNTY VALUE	NC COUNTY AVERAGE VALUE
Strongest	Percentage of People Driving Alone to Work	83.48%	86.36%
2nd Strongest	Percentage of People with Commute Times Over 45 Minutes	15.52%	16.69%
Bottom 10 in NC	Ratio of Average Estimated Home Value to Median Income	34.8	13.67
Bottom 10 in NC, Weakest	Average Available Rent Money less the Average HUD Fair Market Rent	\$416.4	\$799.87

Healthcare: 24.06

The healthcare component examines the availability and quality of healthcare facilities, services, and professionals, which are critical for maintaining a healthy and productive workforce. Alleghany County's performance on this dimension is average when compared to other North Carolina counties, ranking 60th in the state.

Notable variables for Alleghany County within this dimension include:

VARIABLE STRENGTH	FACTOR	ALLEGHANY COUNTY VALUE	NC COUNTY AVERAGE VALUE
Strongest	Physicians per 10,000 Residents	19.76	16.05

2nd Strongest	Nursing Home Beds per 1,000 Residents of Age 65+	29.85	27.53
Weakest	Nurses per 10,000 Residents	66.6	262.64

Community Cohesion: 92.37

This component looks at the strength of social networks, community engagement, and the ability of residents to work together to address challenges and support one another during times of adversity. Alleghany County's performance on this dimension is strong when compared to other North Carolina counties, ranking 2nd in the state.

Notable variables for Alleghany County within this dimension include:

VARIABLE STRENGTH	FACTOR	ALLEGHANY COUNTY VALUE	NC COUNTY AVERAGE VALUE
Top 10 in NC, Strongest	Percentage of Inactive Voters	7.5%	11.3%
Top 10 in NC, 2nd Strongest	Nonprofits Organizations per 1,000 Residents	6.09	3.17
Top 10 in NC	Violent Crimes per 10,000 Residents	0.53	3.07
Weakest	Yearly Population Change Percentage	2.415%	0.906%

Socioeconomics: 18.03

This component considers factors such as income levels, poverty rates, and inequality, which can impact a community's ability to withstand and recover from economic shocks. Alleghany County's performance on this dimension is weak when compared to other North Carolina counties, ranking 88th in the state.

Notable variables for Alleghany County within this dimension include:

VARIABLE STRENGTH	FACTOR	ALLEGHANY COUNTY VALUE	NC COUNTY AVERAGE VALUE
Strongest	Percentage of Households Spending more than 30% Income on Housing	21.39%	24.53%
2nd Strongest	Percentage of Households with Income over \$200k	4.72%	5.28%
Bottom 10 in NC	Percentage of Population without a High School	13.7%	9.05%

	Diploma		
Bottom 10 in NC	Gini Coefficient (Income Inequality)	0.52	0.46
Bottom 10 in NC, Weakest	Median Household Income	\$48,8	\$70,088

Education: 55.27

This component evaluates the quality of educational institutions and the educational attainment levels of the local population, which play a crucial role in developing a skilled and adaptable workforce. Alleghany County's performance on this dimension is fairly strong when compared to other North Carolina counties, ranking 31st in the state.

Notable variables for Alleghany County within this dimension include:

VARIABLE STRENGTH	FACTOR	ALLEGHANY COUNTY VALUE	NC COUNTY AVERAGE VALUE
Top 10 in NC, Strongest	Postsecondary Enrollment Percentage	34.4%	25.48%
2nd Strongest	Student to Teacher Ratio	12	14
Weakest	3rd Grade Reading Proficiency	37.8%	43.1%

Household Characteristics: 51.04

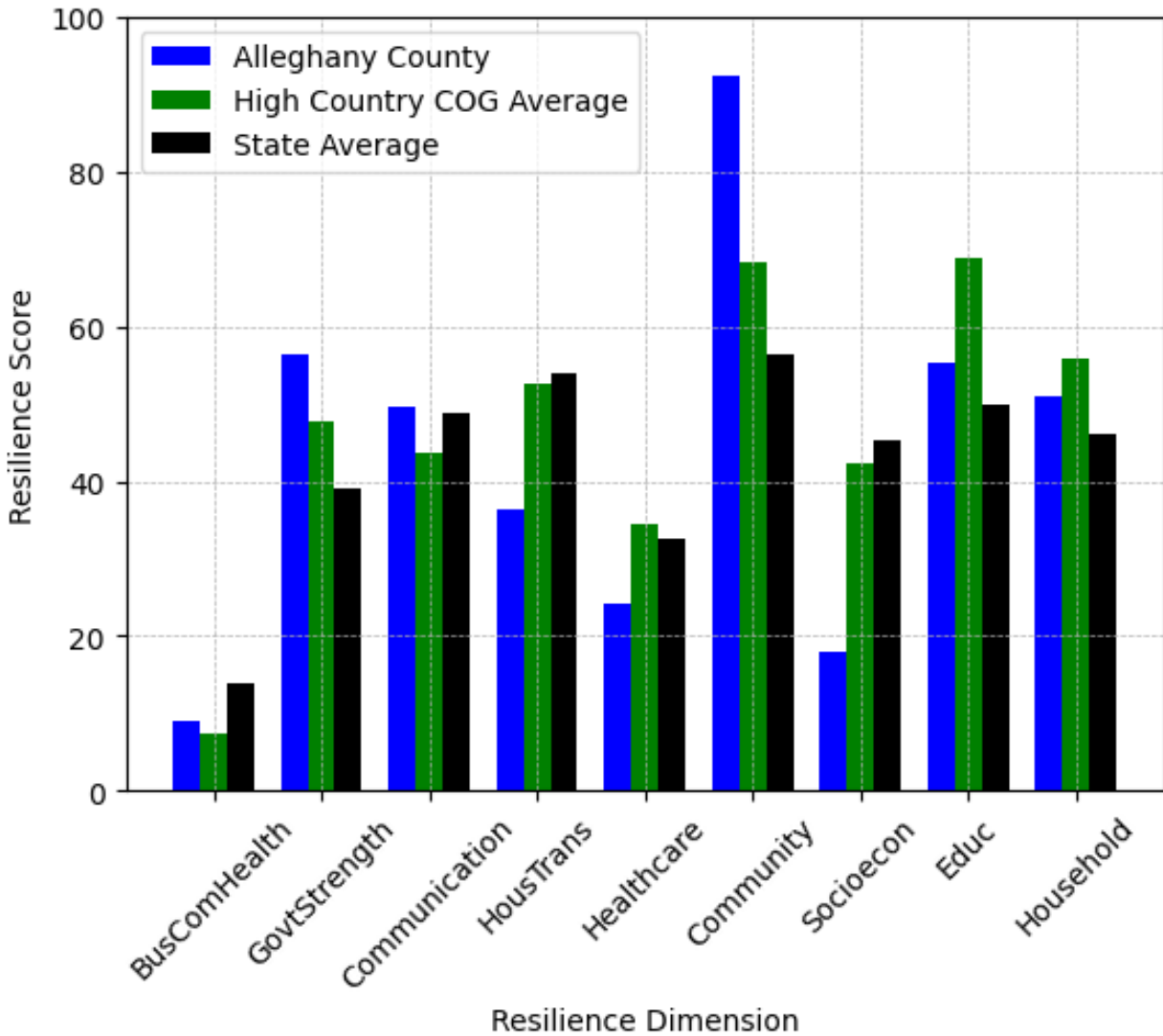
This component examines factors such as the proportion of single-parent households, age distribution, and the proportion of individuals with disabilities, as these elements can influence a community's resilience and ability to recover from economic disruptions. Alleghany County's performance on this dimension is average when compared to other North Carolina counties, ranking 25th in the state.

Notable variables for Alleghany County within this dimension include:

VARIABLE STRENGTH	FACTOR	ALLEGHANY COUNTY VALUE	NC COUNTY AVERAGE VALUE
Top 10 in NC, Strongest	Percentage of Population 17 and Younger	16.31%	20.37%
Top 10 in NC, 2nd Strongest	Percentage of Single Parent Households	22.508%	36.132%
Bottom 10 in NC, Weakest	Percentage of Population 65 and Older	28.02%	20.53%



Allegheny County's Resilience Dimension Scores Over Time As Compared to the Region and State Averages



Note: Resilience Scores are normalized from 1 to 100 with the most resilient county scoring 100. The Resilience Score is determined based on a county's performance relative to NC's other 99 counties.

Notable Trends in Resilience Indicators, 2017-2022

NOTE: The key trends in the this section are identified based on change rates of at least .15 standard deviations over at least 5 years. Variables are positively oriented such that a positive trend indicates improved performance (e.g., 'improvement' in property crime is a lower crime rate, while 'decline' in property crime indicates a higher crime rate).

Trends in the Business Community Health dimension:

Total Employment Level: **295** (5-year change rate = **8.48%**, from 3,480 to 3,775)

→ No change in rank

Average Weekly Wages: **163 dollars** (5-year change rate = **26.46%**, from 616 to 779)

↑ Change in rank from 99 to 96 in NC

Real GDP in Current Dollars: **-28,015 dollars** (5-year change rate = **-8.46%**, from 330,996 to 302,981)

↓ Change in rank from 89 to 90 in NC

Trends in the County Government Fiscal Strength dimension:

Adjusted Tax Base: **14,423 dollars** (5-year change rate = **9.96%**, from 144,801 to 159,224)

↓ Change in rank from 13 to 17 in NC

County Sales Tax: **1,045,773 dollars** (5-year change rate = **54.38%**, from 1,922,997 to 2,968,770)

↑ Change in rank from 94 to 92 in NC

Trends in the Housing & Transportation dimension:

Ratio of Average Estimated Home Value to Median Income : **6.12** (5-year change rate = **21.33%**, from 28.68 to 34.8)

↑ Change in rank from 94 to 92 in NC

Average Available Rent Money less the Average HUD Fair Market Rent: **34.9 dollars** (5-year change rate = **9.15%**, from 381.5 to 416.4)

↓ Change in rank from 84 to 96 in NC

Trends in the Healthcare dimension:

Opioid Deaths per 100,000 Residents: **17.7** (5-year change rate = **65.07%**, from 27.2 to 44.9)

↓ Change in rank from 58 to 72 in NC

Nurses per 10,000 Residents: **4.13** (5-year change rate = **6.61%**, from 62.47 to 66.6)

↑ Change in rank from 92 to 87 in NC

Physicians per 10,000 Residents: **10.6** (5-year change rate = **115.72%**, from 9.16 to 19.76)

↑ Change in rank from 63 to 20 in NC

Mental Health Professionals per 10,000 Residents: **-1.94** (5-year change rate = **-26.47%**, from 7.33 to 5.39)

↓ Change in rank from 23 to 53 in NC

Trends in the Community Cohesion dimension:

Violent Crimes per 10,000 Residents: **-0.48** (4-year change rate = **-47.38%**, from 1.01 to 0.53)

↑ Change in rank from 15 to 7 in NC

Property Crimes per 10,000 Residents: **1.13** (4-year change rate = **14.42%**, from 7.87 to 9.01)

↓ Change in rank from 12 to 14 in NC

Nonprofits Organizations per 1,000 Residents: **0.6** (5-year change rate = **10.89%**, from 5.5 to 6.09)

→ No change in rank

Trends in the Socioeconomics dimension:

Median Household Income: **6,100 dollars** (5-year change rate = **14.29%**, from 42,700 to 48,800)

↓ Change in rank from 92 to 99 in NC

Trends in the Education dimension:

Graduation Percentage: **3.6 percent** (5-year change rate = **4.24%**, from 85 to 88.6)

↑ Change in rank from 68 to 46 in NC

Dropout Rate: **-1.28 percent** (5-year change rate = **-52.92%**, from 2.42 to 1.14)

↑ Change in rank from 58 to 28 in NC

Student to Teacher Ratio: **-2** (4-year change rate = **-15.34%**, from 15 to 12)

↑ Change in rank from 48 to 13 in NC

3rd Grade Reading Proficiency: **-14 percent** (5-year change rate = **-27.03%**, from 51.8 to 37.8)

↓ Change in rank from 58 to 70 in NC

Postsecondary Enrollment Percentage: **0.18 percent** (5-year change rate = **113.17%**, from 0.16 to 0.34)

↑ Change in rank from 91 to 10 in NC

Data Advisements:

- This county has a population under 20,000 residents according to the US Census Bureau; in low population areas, some variable estimates can be less stable and more sensitive to changes.
- Availability of Broadband Services is not available for 2022 and was excluded from calculating this county's dimension and resilience score.
- Adoption Rate of Broadband Services is not available for 2022 and was excluded from calculating this county's dimension and resilience score.