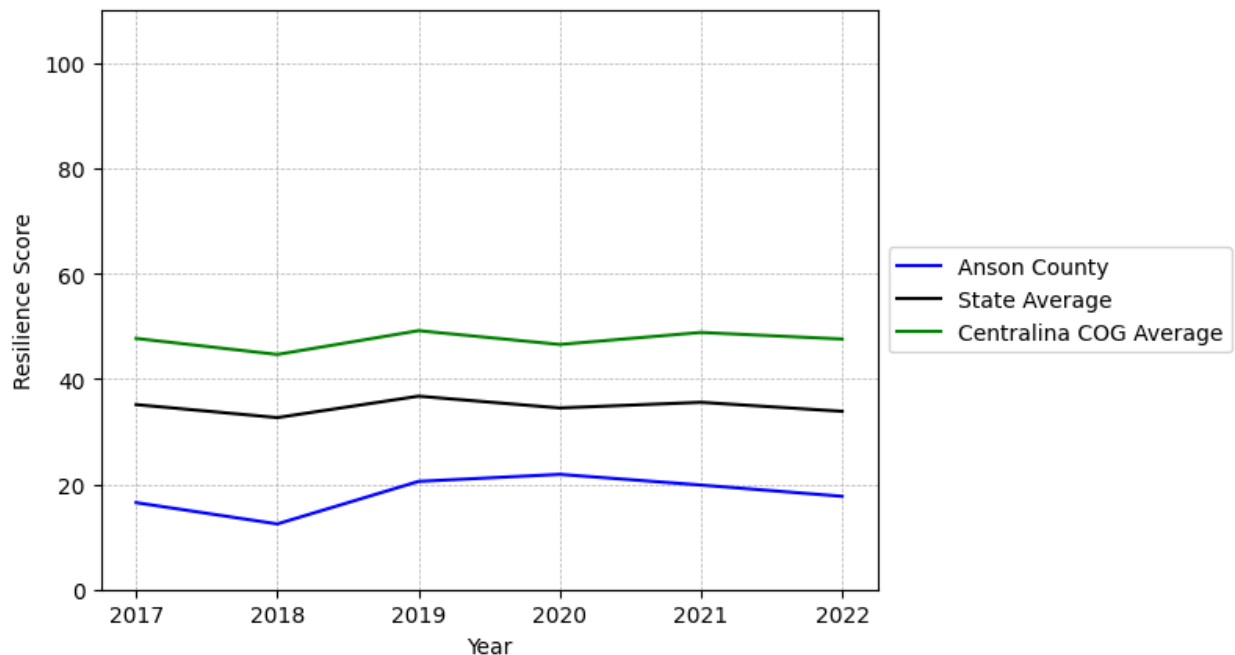


Anson County Summary

Resilience Score: 17.7

In 2022, Anson County achieved a Resilience Score of 17.7, which is fairly weak as compared to the North Carolina State average.

**Anson County's Resilience Score Over Time
As Compared to the Region and State Averages**



Note: Resilience Scores are normalized from 1 to 100 with the most resilient county scoring 100. The Resilience Score is determined based on a county's performance relative to NC's other 99 counties.

Anson County's Resilience Score is comprised of 9 distinct dimensions of resilience. Below are Anson County's scores for 2022 on those 9 dimensions, and their rank relative to other North Carolina counties.

Business Community Health: 5.54

This component examines the strength and diversity of the local business community, including factors such as the number of businesses, employment levels, and industry diversity. Anson County's performance on this dimension is fairly weak when compared to other North Carolina counties, ranking 85th in the state.

Notable variables for Anson County within this dimension include:

VARIABLE STRENGTH	FACTOR	ANSON COUNTY VALUE	NC COUNTY AVERAGE VALUE
Strongest	Private Sector Diversity	0.403	0.28
2nd Strongest	Ratio of Available Child Care Slots to Number of Children under Five	0.54	0.59
Bottom 10 in NC	Percentage of Companies in Science, Engineering, & Technology Industries	2.02%	6.13%
Weakest	Science, Engineering, & Technology Industries Employment Percentage	N/A	1.79%

County Government Fiscal Strength: 52.11

This component looks at the financial health of local governments, including their ability to generate revenue, manage debt, and maintain adequate reserves to weather economic downturns. Anson County's performance on this dimension is average when compared to other North Carolina counties, ranking 32nd in the state.

Notable variables for Anson County within this dimension include:

VARIABLE STRENGTH	FACTOR	ANSON COUNTY VALUE	NC COUNTY AVERAGE VALUE
Top 10 in NC, Strongest	Solvency Ratio of County Government	76.22	46.7
2nd Strongest	Debt Service Ratio of County Government	0.03	0.07
Weakest	County Sales Tax	\$4,784,169	\$31,151,902

Communication: 34.41

This component assesses the availability and quality of communication infrastructure, such as broadband internet access, which is crucial for businesses and residents to stay connected and

resilient during disruptions. Anson County's performance on this dimension is fairly weak when compared to other North Carolina counties, ranking 84th in the state.

Notable variables for Anson County within this dimension include:

VARIABLE STRENGTH	FACTOR	ANSON COUNTY VALUE	NC COUNTY AVERAGE VALUE
Strongest	Percentage of Population without Smartphones	19.95%	17.22%
2nd Strongest	Local High-Speed Mobile Data Availability	0.56	0.66
Weakest	In-Vehicle High-Speed Mobile Data Availability	0.17	0.37

Housing & Transportation: 45.76

This component evaluates the accessibility and affordability of housing, as well as the availability of reliable transportation options, which are essential for a resilient workforce and economy. Anson County's performance on this dimension is fairly weak when compared to other North Carolina counties, ranking 76th in the state.

Notable variables for Anson County within this dimension include:

VARIABLE STRENGTH	FACTOR	ANSON COUNTY VALUE	NC COUNTY AVERAGE VALUE
Top 10 in NC, Strongest	Percentage of People Driving Alone to Work	81.05%	86.36%
2nd Strongest	Percentage of Households with More Residents than Rooms	1.83%	2.1%
Bottom 10 in NC, Weakest	Percentage of Homes Built Before 1980	63.49%	40.9%

Healthcare: 36.21

The healthcare component examines the availability and quality of healthcare facilities, services, and professionals, which are critical for maintaining a healthy and productive workforce. Anson County's performance on this dimension is fairly strong when compared to other North Carolina counties, ranking 18th in the state.

Notable variables for Anson County within this dimension include:

VARIABLE	FACTOR	ANSON COUNTY	NC COUNTY
----------	--------	--------------	-----------

STRENGTH		VALUE	AVERAGE VALUE
Strongest	Nursing Home Beds per 1,000 Residents of Age 65+	37.57	27.53
2nd Strongest	Mental Health Professionals per 10,000 Residents	8.38	6.6
Weakest	Nurses per 10,000 Residents	155.51	262.64

Community Cohesion: 51.23

This component looks at the strength of social networks, community engagement, and the ability of residents to work together to address challenges and support one another during times of adversity. Anson County's performance on this dimension is average when compared to other North Carolina counties, ranking 71st in the state.

Notable variables for Anson County within this dimension include:

VARIABLE STRENGTH	FACTOR	ANSON COUNTY VALUE	NC COUNTY AVERAGE VALUE
Strongest	Nonprofits Organizations per 1,000 Residents	4.59	3.17
2nd Strongest	Percentage of Inactive Voters	9.48%	11.3%
Weakest	Violent Crimes per 10,000 Residents	6.45	3.07

Socioeconomics: 18.31

This component considers factors such as income levels, poverty rates, and inequality, which can impact a community's ability to withstand and recover from economic shocks. Anson County's performance on this dimension is weak when compared to other North Carolina counties, ranking 86th in the state.

Notable variables for Anson County within this dimension include:

VARIABLE STRENGTH	FACTOR	ANSON COUNTY VALUE	NC COUNTY AVERAGE VALUE
Strongest	Gini Coefficient (Income Inequality)	0.45	0.46
2nd Strongest	Unemployment Rate (Q4)	4.1%	3.9%
Bottom 10 in NC	Percentage of Households with Income over \$200k	1.86%	5.28%

Bottom 10 in NC, Weakest	Population 25+ with at least a Bachelor's Degree	11.39%	24.4%
-------------------------------------	--	--------	-------

Education: 24.47

This component evaluates the quality of educational institutions and the educational attainment levels of the local population, which play a crucial role in developing a skilled and adaptable workforce. Anson County's performance on this dimension is weak when compared to other North Carolina counties, ranking 90th in the state.

Notable variables for Anson County within this dimension include:

VARIABLE STRENGTH	FACTOR	ANSON COUNTY VALUE	NC COUNTY AVERAGE VALUE
Strongest	Graduation Percentage	88.6%	88.03%
2nd Strongest	Postsecondary Enrollment Percentage	22.46%	25.48%
Bottom 10 in NC, Weakest	Dropout Rate	3.7%	1.65%

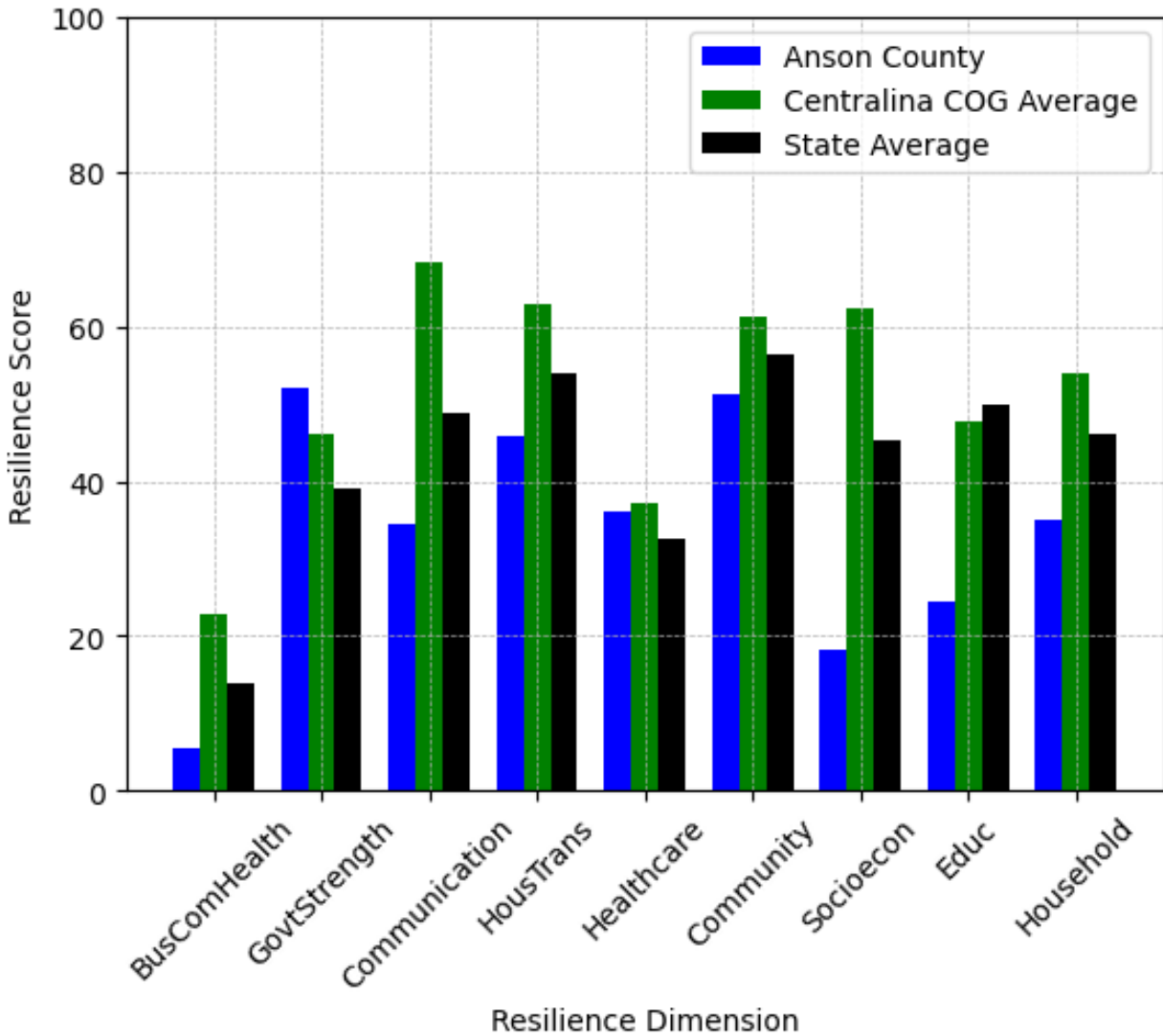
Household Characteristics: 34.88

This component examines factors such as the proportion of single-parent households, age distribution, and the proportion of individuals with disabilities, as these elements can influence a community's resilience and ability to recover from economic disruptions. Anson County's performance on this dimension is fairly weak when compared to other North Carolina counties, ranking 79th in the state.

Notable variables for Anson County within this dimension include:

VARIABLE STRENGTH	FACTOR	ANSON COUNTY VALUE	NC COUNTY AVERAGE VALUE
Strongest	Percentage of Population with Limited English Proficiency	0.604%	1.454%
2nd Strongest	Percentage of Population 17 and Younger	19.99%	20.37%
Bottom 10 in NC, Weakest	Percentage of Population with a Disability	20.565%	16.566%

Anson County's Resilience Dimension Scores Over Time As Compared to the Region and State Averages



Note: Resilience Scores are normalized from 1 to 100 with the most resilient county scoring 100. The Resilience Score is determined based on a county's performance relative to NC's other 99 counties.

Notable Trends in Resilience Indicators, 2017-2022

NOTE: The key trends in the this section are identified based on change rates of at least .15 standard deviations over at least 5 years. Variables are positively oriented such that a positive trend indicates improved performance (e.g., 'improvement' in property crime is a lower crime rate, while 'decline' in property crime indicates a higher crime rate).

Trends in the Business Community Health dimension:

Total Employment Level: **-397** (5-year change rate = **-5.53%**, from 7,183 to 6,786)

↓ Change in rank from 76 to 78 in NC

Average Weekly Wages: **185 dollars** (5-year change rate = **27.95%**, from 662 to 847)

↑ Change in rank from 86 to 84 in NC

Real GDP in Current Dollars: **41 dollars** (5-year change rate = **0%**, from 836,656 to 836,697)

→ No change in rank

Ratio of Available Child Care Slots to Number of Children under Five: **-0.32** (5-year change rate = **-37.33%**, from 0.86 to 0.54)

↓ Change in rank from 15 to 63 in NC

Trends in the County Government Fiscal Strength dimension:

Adjusted Tax Base: **28,329 dollars** (5-year change rate = **40.43%**, from 70,063 to 98,392)

↑ Change in rank from 77 to 55 in NC

County Sales Tax: **1,255,256 dollars** (5-year change rate = **35.57%**, from 3,528,913 to 4,784,169)

↓ Change in rank from 78 to 82 in NC

Trends in the Housing & Transportation dimension:

Ratio of Average Estimated Home Value to Median Income : **5.39** (5-year change rate = **62.16%**, from 8.68 to 14.07)

↓ Change in rank from 63 to 73 in NC

Average Available Rent Money less the Average HUD Fair Market Rent: **329.6 dollars** (5-year change rate = **126.14%**, from 261.3 to 590.9)

↑ Change in rank from 98 to 75 in NC

Trends in the Healthcare dimension:

Opioid Deaths per 100,000 Residents: **16.6** (5-year change rate = **138.33%**, from 12 to 28.6)

↓ Change in rank from 14 to 28 in NC

Nurses per 10,000 Residents: **59.6** (5-year change rate = **62.14%**, from 95.91 to 155.51)

↑ Change in rank from 77 to 52 in NC

Physicians per 10,000 Residents: **8.89** (5-year change rate = **160.76%**, from 5.53 to 14.42)

↑ Change in rank from 79 to 45 in NC

Mental Health Professionals per 10,000 Residents: **1.14** (5-year change rate = **15.75%**, from 7.24 to 8.38)

↓ Change in rank from 24 to 26 in NC

Trends in the Community Cohesion dimension:

Violent Crimes per 10,000 Residents: **1.17** (4-year change rate = **22.05%**, from 5.29 to 6.45)

↓ Change in rank from 87 to 89 in NC

Property Crimes per 10,000 Residents: **3.24** (4-year change rate = **16.68%**, from 19.41 to 22.65)

↓ Change in rank from 52 to 84 in NC

Nonprofits Organizations per 1,000 Residents: **1.53** (5-year change rate = **50.15%**, from 3.06 to 4.59)

↑ Change in rank from 40 to 16 in NC

Trends in the Socioeconomics dimension:

Unemployment Rate (Q4): **-0.6 percent** (5-year change rate = **-12.23%**, from 4.6 to 4.1)

↓ Change in rank from 64 to 72 in NC

Median Household Income: **16,400 dollars** (5-year change rate = **40.49%**, from 40,500 to 56,900)

↑ Change in rank from 95 to 80 in NC

Trends in the Education dimension:

Graduation Percentage: **4.4 percent** (5-year change rate = **5.23%**, from 84.2 to 88.6)

↑ Change in rank from 73 to 47 in NC

Dropout Rate: **-0.79 percent** (5-year change rate = **-17.58%**, from 4.49 to 3.7)

↓ Change in rank from 97 to 98 in NC

Student to Teacher Ratio: **-1** (4-year change rate = **-7.1%**, from 16 to 15)

↑ Change in rank from 79 to 60 in NC

3rd Grade Reading Proficiency: **-8.8 percent** (5-year change rate = **-20.05%**, from 43.9 to 35.1)

↑ Change in rank from 86 to 79 in NC

Data Advisements:

- Science, Engineering, & Technology Industries Employment Percentage is not available for 2022 and was excluded from calculating this county's dimension and resilience score.
- Availability of Broadband Services is not available for 2022 and was excluded from calculating this county's dimension and resilience score.
- Adoption Rate of Broadband Services is not available for 2022 and was excluded from calculating this county's dimension and resilience score.