

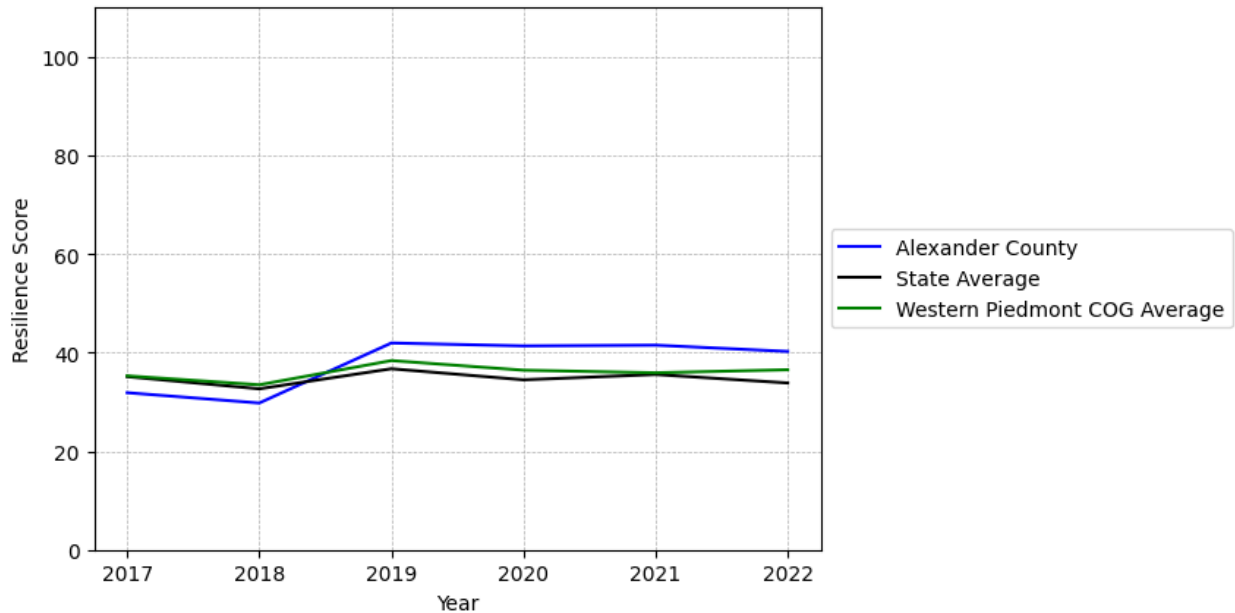
# Alexander County Summary

---

**Resilience Score: 40.23**

In 2022, Alexander County achieved a Resilience Score of 40.23, which is average as compared to the North Carolina State average.

**Alexander County's Resilience Score Over Time  
As Compared to the Region and State Averages**



*Note: Resilience Scores are normalized from 1 to 100 with the most resilient county scoring 100. The Resilience Score is determined based on a county's performance relative to NC's other 99 counties.*

Alexander County's Resilience Score is comprised of 9 distinct dimensions of resilience. Below are Alexander County's scores for 2022 on those 9 dimensions, and their rank relative to other North Carolina counties.

### **Business Community Health: 6.95**

This component examines the strength and diversity of the local business community, including factors such as the number of businesses, employment levels, and industry diversity. Alexander County's performance on this dimension is fairly weak when compared to other North Carolina counties, ranking 79th in the state.

Notable variables for Alexander County within this dimension include:

<b>VARIABLE STRENGTH</b>	<b>FACTOR</b>	<b>ALEXANDER COUNTY VALUE</b>	<b>NC COUNTY AVERAGE VALUE</b>
<b>Strongest</b>	Private Sector Diversity	0.367	0.28
<b>2nd Strongest</b>	Ratio of Available Child Care Slots to Number of Children under Five	0.56	0.59
<b>Weakest</b>	Science, Engineering, & Technology Industries Employment Percentage	0.11%	1.79%

---

### **County Government Fiscal Strength: 42.64**

This component looks at the financial health of local governments, including their ability to generate revenue, manage debt, and maintain adequate reserves to weather economic downturns. Alexander County's performance on this dimension is average when compared to other North Carolina counties, ranking 50th in the state.

Notable variables for Alexander County within this dimension include:

<b>VARIABLE STRENGTH</b>	<b>FACTOR</b>	<b>ALEXANDER COUNTY VALUE</b>	<b>NC COUNTY AVERAGE VALUE</b>
<b>Strongest</b>	Debt Service Ratio of County Government	0.02	0.07
<b>2nd Strongest</b>	Dependency Ratio of County Government	0.12	0.16
<b>Weakest</b>	Adjusted Tax Base	\$82,505	\$124,092

---

### **Communication: 48.91**

This component assesses the availability and quality of communication infrastructure, such as broadband internet access, which is crucial for businesses and residents to stay connected and resilient during disruptions. Alexander County's performance on this dimension is average when compared to other North Carolina counties, ranking 55th in the state.

Notable variables for Alexander County within this dimension include:

VARIABLE STRENGTH	FACTOR	ALEXANDER COUNTY VALUE	NC COUNTY AVERAGE VALUE
<b>Strongest</b>	Local High-Speed Mobile Data Availability	0.75	0.66
<b>2nd Strongest</b>	In-Vehicle High-Speed Mobile Data Availability	0.4	0.37
<b>Weakest</b>	Percentage of Population without Smartphones	20.11%	17.22%

### **Housing & Transportation: 71.51**

This component evaluates the accessibility and affordability of housing, as well as the availability of reliable transportation options, which are essential for a resilient workforce and economy. Alexander County's performance on this dimension is fairly strong when compared to other North Carolina counties, ranking 30th in the state.

Notable variables for Alexander County within this dimension include:

VARIABLE STRENGTH	FACTOR	ALEXANDER COUNTY VALUE	NC COUNTY AVERAGE VALUE
<b>Top 10 in NC, Strongest</b>	Percentage of Owner-Occupied Homes	69.72%	57.87%
<b>Top 10 in NC, 2nd Strongest</b>	Percentage of Population without Vehicles	2.81%	5.75%
<b>Weakest</b>	Percentage of Households with More Residents than Rooms	2.91%	2.1%

### **Healthcare: 24.73**

The healthcare component examines the availability and quality of healthcare facilities, services, and professionals, which are critical for maintaining a healthy and productive workforce. Alexander County's performance on this dimension is average when compared to other North Carolina counties, ranking 58th in the state.

Notable variables for Alexander County within this dimension include:

VARIABLE STRENGTH	FACTOR	ALEXANDER COUNTY VALUE	NC COUNTY AVERAGE VALUE
<b>Strongest</b>	Opioid Deaths per 100,000 Residents	24	38.73
<b>2nd Strongest</b>	Mental Health	7.41	6.6

<b>Bottom 10 in NC, Weakest</b>	Professionals per 10,000 Residents		
	Physicians per 10,000 Residents	3.02	16.05

### Community Cohesion: 64.64

This component looks at the strength of social networks, community engagement, and the ability of residents to work together to address challenges and support one another during times of adversity. Alexander County's performance on this dimension is average when compared to other North Carolina counties, ranking 33rd in the state.

Notable variables for Alexander County within this dimension include:

VARIABLE STRENGTH	FACTOR	ALEXANDER COUNTY VALUE	NC COUNTY AVERAGE VALUE
<b>Top 10 in NC, Strongest</b>	Percentage of Inactive Voters	7.3%	11.3%
<b>2nd Strongest</b>	Property Crimes per 10,000 Residents	10.79	15.74
<b>Weakest</b>	Yearly Population Change Percentage	0.16%	0.906%

### Socioeconomics: 56.78

This component considers factors such as income levels, poverty rates, and inequality, which can impact a community's ability to withstand and recover from economic shocks. Alexander County's performance on this dimension is fairly strong when compared to other North Carolina counties, ranking 26th in the state.

Notable variables for Alexander County within this dimension include:

VARIABLE STRENGTH	FACTOR	ALEXANDER COUNTY VALUE	NC COUNTY AVERAGE VALUE
<b>Top 10 in NC, Strongest</b>	Percentage of Households Spending more than 30% Income on Housing	16.46%	24.53%
<b>2nd Strongest</b>	Unemployment Rate (Q4)	3.1%	3.9%
<b>Weakest</b>	Population 25+ with at least a Bachelor's Degree	15.32%	24.4%

### Education: 49.85

This component evaluates the quality of educational institutions and the educational attainment levels of the local population, which play a crucial role in developing a skilled and adaptable workforce. Alexander County's performance on this dimension is average when compared to other North Carolina counties, ranking 44th in the state.

Notable variables for Alexander County within this dimension include:

VARIABLE STRENGTH	FACTOR	ALEXANDER COUNTY VALUE	NC COUNTY AVERAGE VALUE
Top 10 in NC, Strongest	Teacher Attrition Rate	0.07	0.12
2nd Strongest	3rd Grade Reading Proficiency	54.6%	43.1%
Weakest	Local LEA Financial Resources (per ADM)	\$4,936	\$8,683

---

### Household Characteristics: 58.82

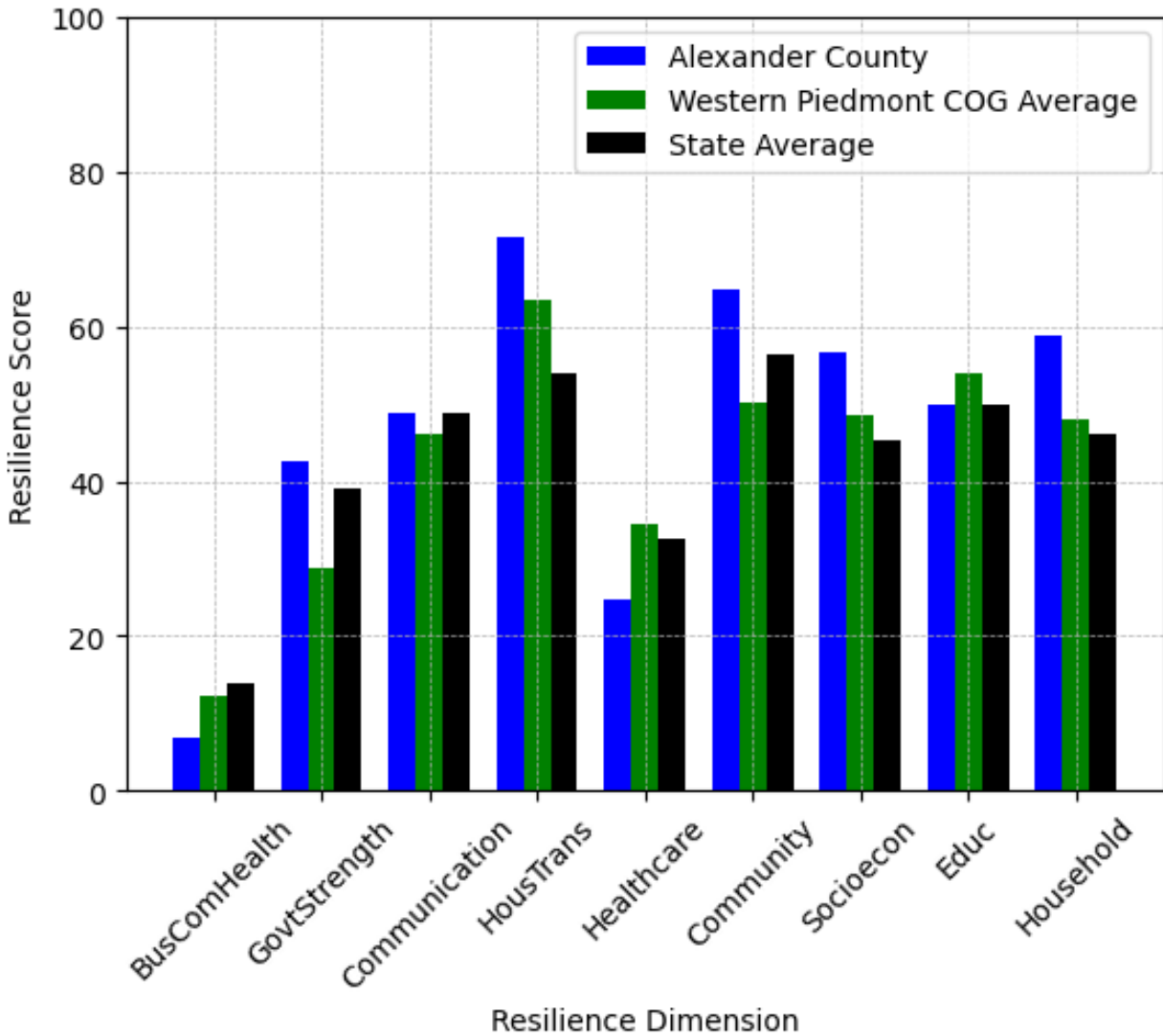
This component examines factors such as the proportion of single-parent households, age distribution, and the proportion of individuals with disabilities, as these elements can influence a community's resilience and ability to recover from economic disruptions. Alexander County's performance on this dimension is fairly strong when compared to other North Carolina counties, ranking 16th in the state.

Notable variables for Alexander County within this dimension include:

VARIABLE STRENGTH	FACTOR	ALEXANDER COUNTY VALUE	NC COUNTY AVERAGE VALUE
Strongest	Percentage of Single Parent Households	25.257%	36.132%
2nd Strongest	Percentage of Population with Limited English Proficiency	0.479%	1.454%
Weakest	Percentage of Population with a Disability	17.127%	16.566%

---

## Alexander County's Resilience Dimension Scores Over Time As Compared to the Region and State Averages



*Note: Resilience Scores are normalized from 1 to 100 with the most resilient county scoring 100. The Resilience Score is determined based on a county's performance relative to NC's other 99 counties.*

## **Notable Trends in Resilience Indicators, 2017-2022**

*NOTE: The key trends in the this section are identified based on change rates of at least .15 standard deviations over at least 5 years. Variables are positively oriented such that a positive trend indicates improved performance (e.g., 'improvement' in property crime is a lower crime rate, while 'decline' in property crime indicates a higher crime rate).*

### **Trends in the Business Community Health dimension:**

Total Employment Level: **195** (5-year change rate = **2.12%**, from 9,215 to 9,410)

↑ Change in rank from 69 to 68 in NC

Average Weekly Wages: **194 dollars** (5-year change rate = **29.35%**, from 661 to 855)

↑ Change in rank from 87 to 80 in NC

Real GDP in Current Dollars: **11,341 dollars** (5-year change rate = **1.3%**, from 873,058 to 884,399)

→ No change in rank

### **Trends in the County Government Fiscal Strength dimension:**

Adjusted Tax Base: **12,196 dollars** (5-year change rate = **17.35%**, from 70,309 to 82,505)

↓ Change in rank from 76 to 84 in NC

County Sales Tax: **3,432,556 dollars** (5-year change rate = **53.86%**, from 6,373,434 to 9,805,990)

↑ Change in rank from 70 to 69 in NC

### **Trends in the Housing & Transportation dimension:**

Ratio of Average Estimated Home Value to Median Income : **2.71** (5-year change rate = **28.29%**, from 9.59 to 12.3)

↑ Change in rank from 66 to 65 in NC

Average Available Rent Money less the Average HUD Fair Market Rent: **393.8 dollars** (5-year change rate = **70.37%**, from 559.6 to 953.4)

↑ Change in rank from 42 to 32 in NC

**Trends in the Healthcare dimension:**

Opioid Deaths per 100,000 Residents: **7.9** (5-year change rate = **49.07%**, from 16.1 to 24)

↑ Change in rank from 25 to 21 in NC

Nurses per 10,000 Residents: **-8** (5-year change rate = **-11.14%**, from 71.8 to 63.8)

↓ Change in rank from 87 to 89 in NC

Physicians per 10,000 Residents: **-1.34** (5-year change rate = **-30.73%**, from 4.36 to 3.02)

↓ Change in rank from 87 to 95 in NC

Mental Health Professionals per 10,000 Residents: **2.5** (5-year change rate = **50.92%**, from 4.91 to 7.41)

↑ Change in rank from 55 to 34 in NC

**Trends in the Community Cohesion dimension:**

Violent Crimes per 10,000 Residents: **-0.25** (4-year change rate = **-10.3%**, from 2.4 to 2.15)

↑ Change in rank from 56 to 41 in NC

Property Crimes per 10,000 Residents: **-4.86** (4-year change rate = **-31.07%**, from 15.66 to 10.79)

↑ Change in rank from 39 to 21 in NC

Nonprofits Organizations per 1,000 Residents: **2.17** (5-year change rate = **2,363.11%**, from 0.09 to 2.26)

↑ Change in rank from 100 to 70 in NC

**Trends in the Socioeconomics dimension:**

Unemployment Rate (Q4): **-0.3 percent** (5-year change rate = **-7.84%**, from 3.4 to 3.1)

↓ Change in rank from 3 to 15 in NC



Median Household Income: **17,600 dollars** (5-year change rate = **33.85%**, from 52,000 to 69,600)

↑ Change in rank from 52 to 45 in NC

**Trends in the Education dimension:**

Graduation Percentage: **1.2 percent** (5-year change rate = **1.39%**, from 86.3 to 87.5)

↓ Change in rank from 57 to 61 in NC

Dropout Rate: **-0.77 percent** (5-year change rate = **-27.01%**, from 2.85 to 2.08)

↑ Change in rank from 76 to 71 in NC

Student to Teacher Ratio: **-1** (4-year change rate = **-4.17%**, from 15 to 14)

↑ Change in rank from 46 to 42 in NC

3rd Grade Reading Proficiency: **-0.8 percent** (5-year change rate = **-1.44%**, from 55.4 to 54.6)

↑ Change in rank from 44 to 16 in NC

**Data Advisements:**

- Availability of Broadband Services is not available for 2022 and was excluded from calculating this county's dimension and resilience score.
- Adoption Rate of Broadband Services is not available for 2022 and was excluded from calculating this county's dimension and resilience score.